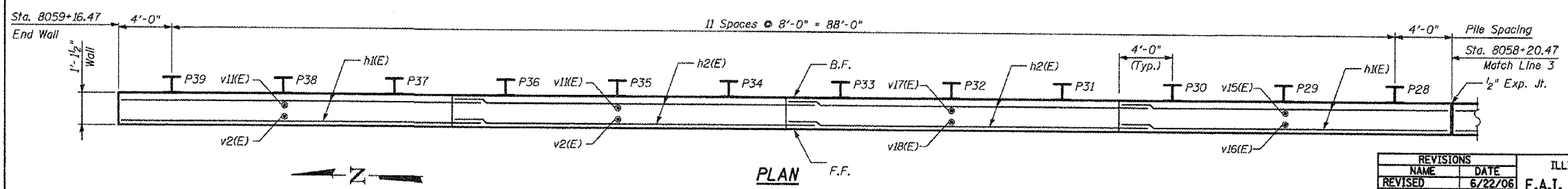
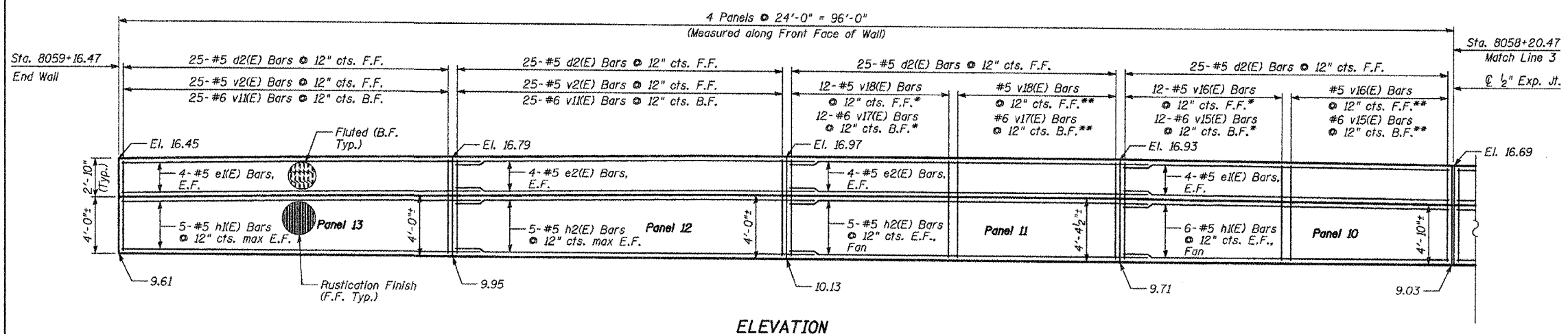
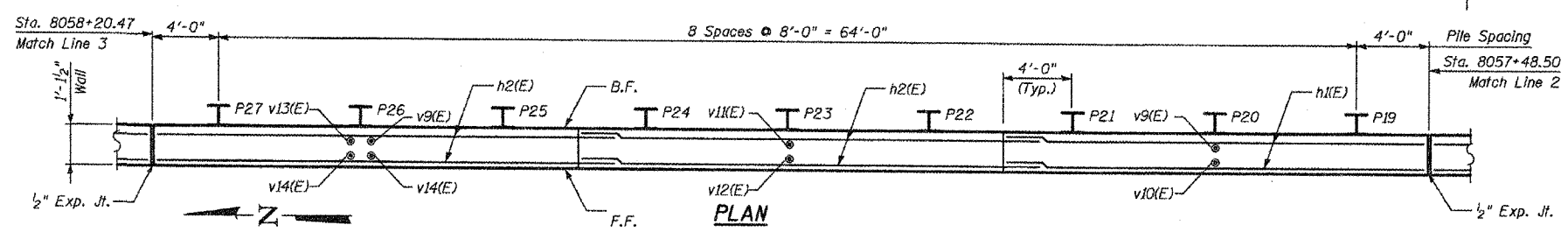
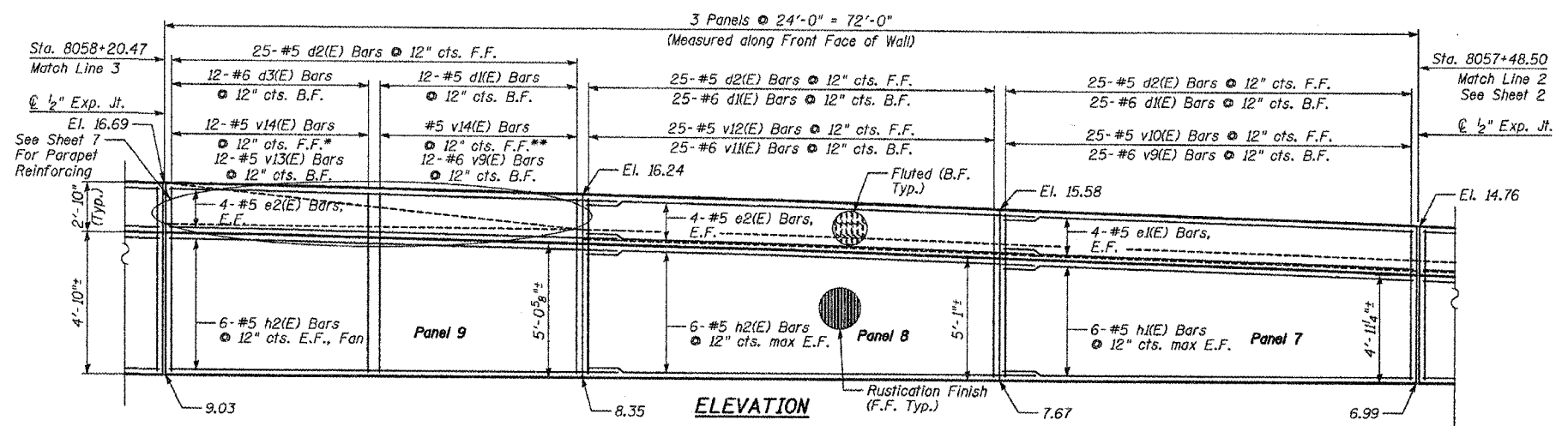


F.A.I.	SECTION	COUNTY	TOTAL SHEETS	SHEET NO.
94/90		COOK	565	408
STA.		TO STA.		
FED. ROAD DIST. NO.		ILLINOIS	FED. AID PROJECT	
62301		*2021-922 PT2 ETC 2324.6-1P1 R-10		



- Notes:
1. Stationing given is @ Ramp 43D.
  2. Facing in Plan Views is scaled 1:2 on an X,Y scale to show reinforcement.
  3. See details for reinforcing bar clearances.

\* Order bars full length and cut as indicated in Cutting Diagram  
 \*\* Remaining bars from Cutting Diagram

F.F. - denotes Front Face  
 B.F. - denotes Back Face  
 E.F. - denotes Each Face

Min Bar Lap  
 #5 - 2'-2"  
 #6 - 2'-7"

REVISIONS	
NAME	DATE
REVISED	6/22/06

SHEET 3 OF 9  
 ILLINOIS DEPARTMENT OF TRANSPORTATION  
 F.A.I. 94/90 (DAN RYAN EXPRESSWAY)  
 GARFIELD BLVD TO 31ST STREET (NB LOCAL LANES)  
 RETAINING WALL N-43S-R  
 WALL DETAILS 2  
 SCALE: NTS  
 DATE: JUNE 9, 2006  
 DRAWN BY: LAM  
 CHECKED BY: BLU

BOWMAN, BARRETT & ASSOCIATES INC.  
 CONSULTING ENGINEERS  
 Chicago, Illinois  
 312.228.0100  
 www.bbainc.com