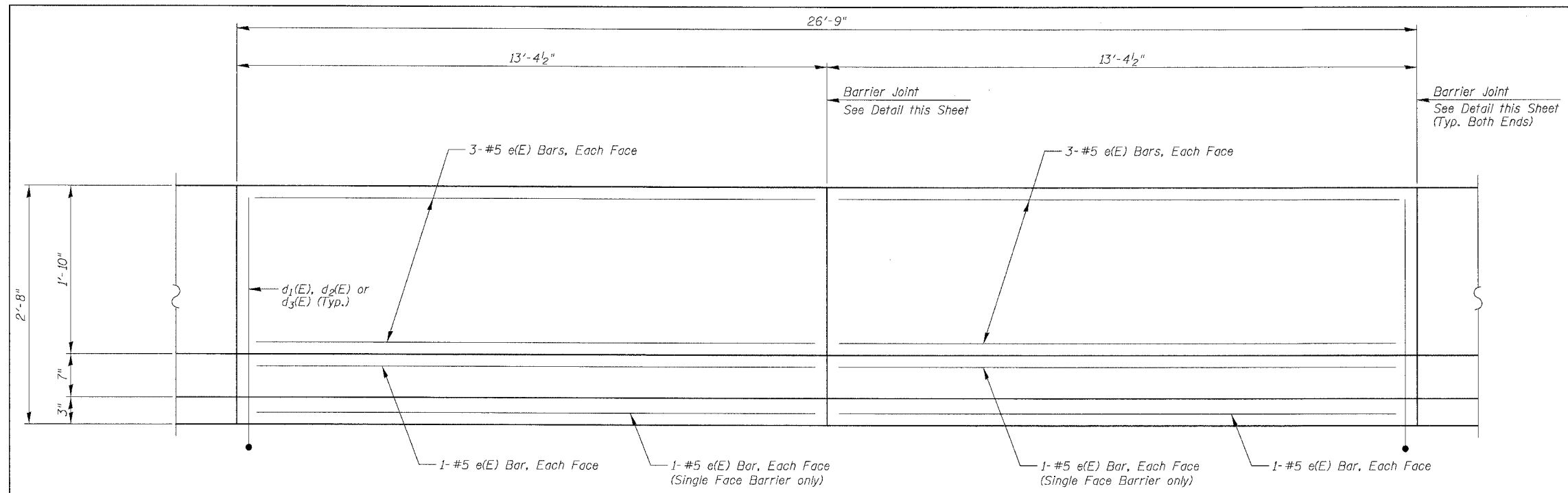


|                     |                                    |                  |              |           |
|---------------------|------------------------------------|------------------|--------------|-----------|
| F.A.I.              | SECTION                            | COUNTY           | TOTAL SHEETS | SHEET NO. |
| 94/90               |                                    | COOK             | 565          | 430       |
| STA.                | TO STA.                            |                  |              |           |
| FED. ROAD DIST. NO. | ILLINOIS                           | FED. AID PROJECT |              |           |
| 62301               | *I2021-922 PT2 ETC 2324.6-1P) R-10 |                  |              |           |

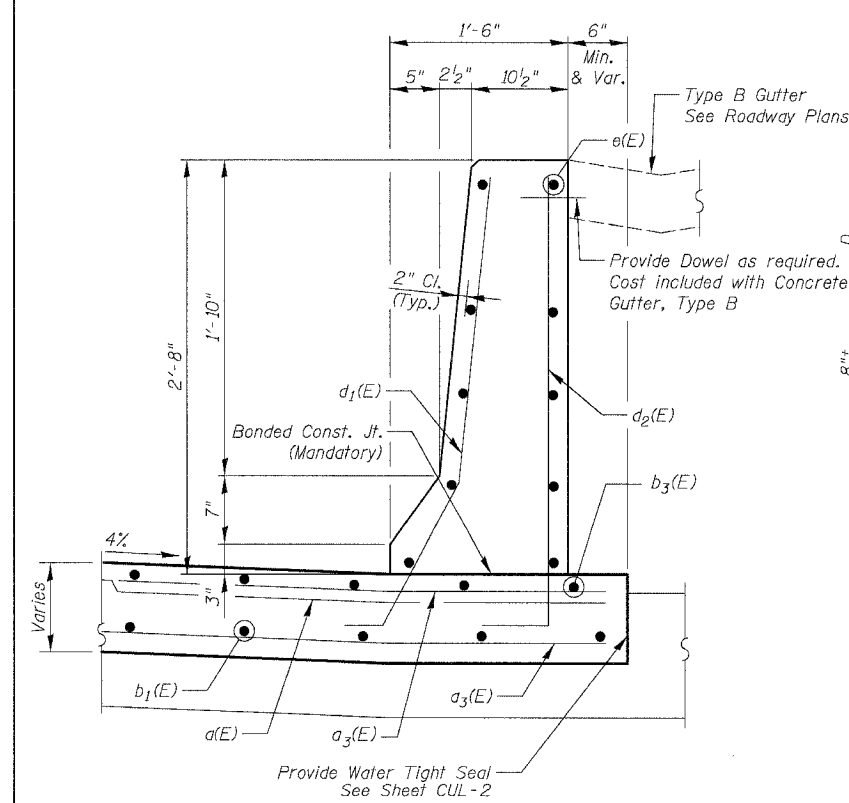
**TOP SLAB  
BILL OF MATERIAL**

| Bar                              | No.     | Size   | Length | Shape |
|----------------------------------|---------|--------|--------|-------|
| a(E)                             | 56      | #5     | 35'-8" | —     |
| a <sub>1</sub> (E)               | 56      | #5     | 12'-2" | —     |
| a <sub>2</sub> (E)               | 56      | #5     | 6'-8"  | —     |
| a <sub>3</sub> (E)               | 27      | #6     | 7'-0"  | —     |
|                                  |         |        |        |       |
| b(E)                             | 56      | #7     | 26'-5" | —     |
| b <sub>1</sub> (E)               | 56      | #7     | 8'-0"  | —     |
| b <sub>2</sub> (E)               | 112     | #7     | 28'-1" | U     |
| b <sub>3</sub> (E)               | 7       | #5     | 26'-5" | —     |
|                                  |         |        |        |       |
| d(E)                             | 26      | #6     | 1'-0"  | —     |
| d <sub>1</sub> (E)               | 27      | #5     | 4'-5"  | L     |
| d <sub>2</sub> (E)               | 27      | #5     | 4'-11" | L     |
| d <sub>3</sub> (E)               | 54      | #5     | 3'-3"  | L     |
|                                  |         |        |        |       |
| e(E)                             | 32      | #5     | 13'-0" | —     |
|                                  |         |        |        |       |
| Concrete Superstructure          | Cu. Yd. | 79.0   |        |       |
| Bridge Deck Grooving             | Sq. Yd. | 153    |        |       |
| Protective Coat                  | Sq. Yd. | 189    |        |       |
| Reinforcement Bars, Epoxy Coated | Pound   | 14,950 |        |       |
| Bar Splicers                     | Each    | 110    |        |       |

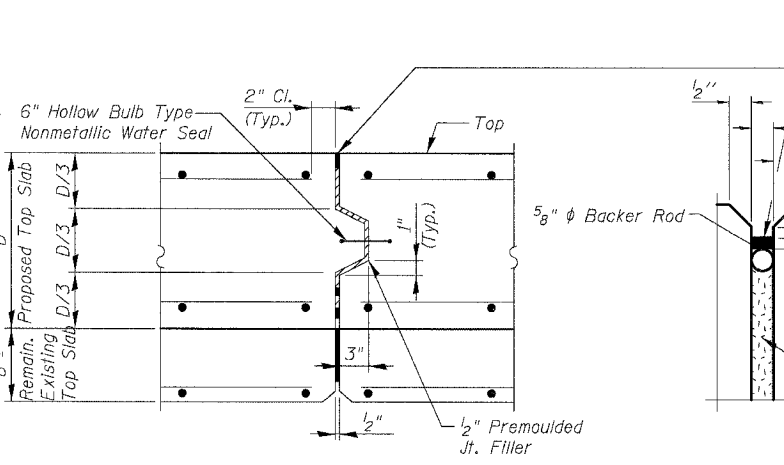
Reinforcement bars designated (E) shall be epoxy coated.  
 Cost of water seal, P.J.F. and Sealant included in the cost of Concrete Superstructure.  
 See Sheet CUL-7 for Section thru Double Face Barrier.  
 Epoxy Grout #6d (E) Bars in Drilled Holes with a Depth of 6" in Accordance with Art. 584 of the Std. Specs.



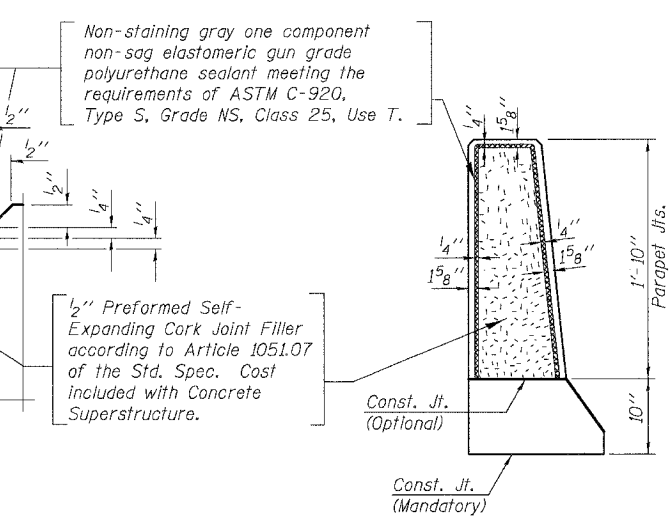
**INSIDE ELEVATION OF BARRIER**  
 Single Face shown, Double Face similar as noted



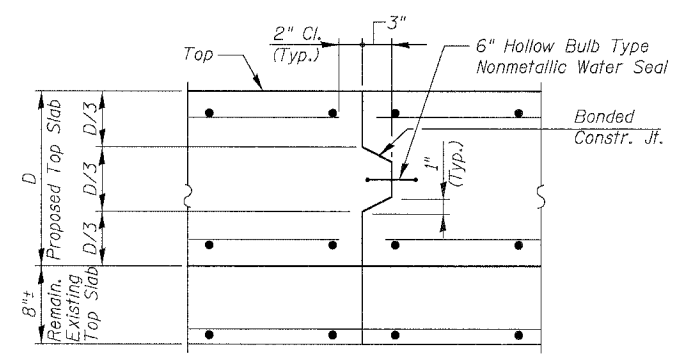
**SECTION THRU SINGLE FACE BARRIER**



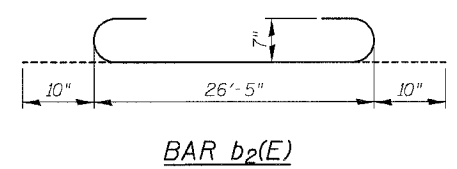
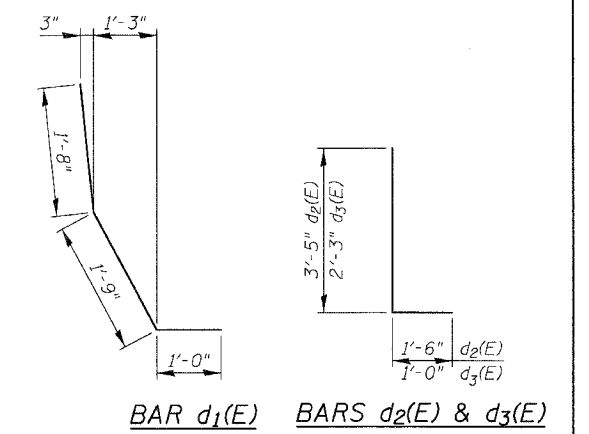
**CULVERT EXPANSION JOINT**  
 Do not seal until after grooving operations



**BARRIER JOINT DETAILS**  
 Shown for Single Face Barrier, Double Face similar as required



**CULVERT CONSTRUCTION JOINT**



| REVISIONS |  | DATE |
|-----------|--|------|
| NAME      |  |      |
|           |  |      |
|           |  |      |
|           |  |      |
|           |  |      |
|           |  |      |
|           |  |      |

SHEET CUL-5 OF CUL-16

ILLINOIS DEPARTMENT OF TRANSPORTATION  
 F.A.I. 94/90 (DAN RYAN EXPRESSWAY)  
 GARFIELD BLVD TO 31ST STREET (NB LOCAL LANES)  
 MWRD CULVERT, N. OF 39TH ST.,  
 COOK COUNTY, S.N. 016-2625  
 TOP SLAB DETAILS

SCALE: N.T.S.      DRAWN BY: MTR  
 DATE: JUNE 9, 2006      CHECKED BY: BLU

BOWMAN, BARRETT & ASSOCIATES INC.  
 CONSULTING ENGINEERS  
 Chicago, Illinois  
 312.228.0100  
 www.bbainc.com

6/17/2006 4:00:40 PM