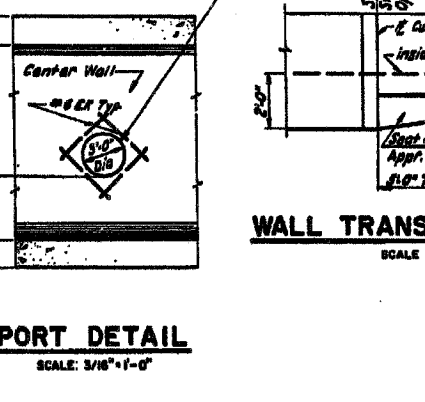
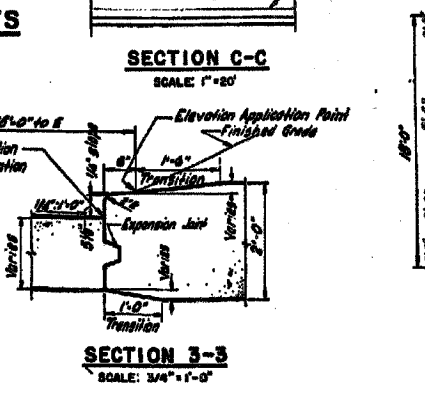
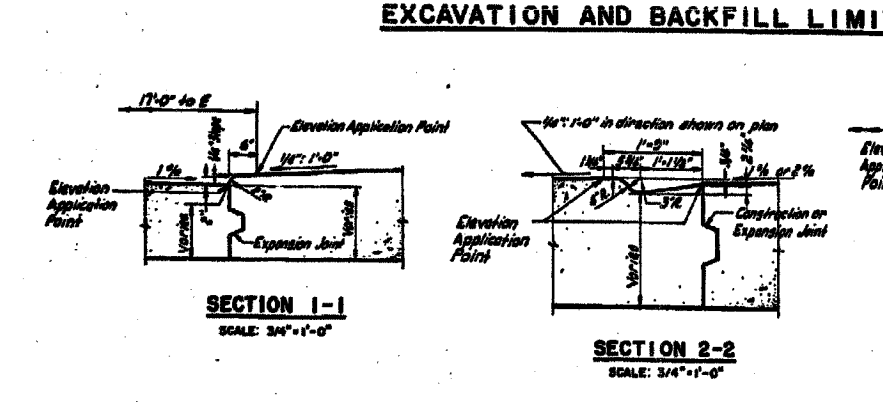
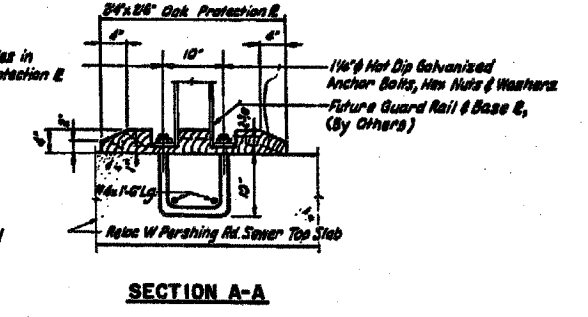
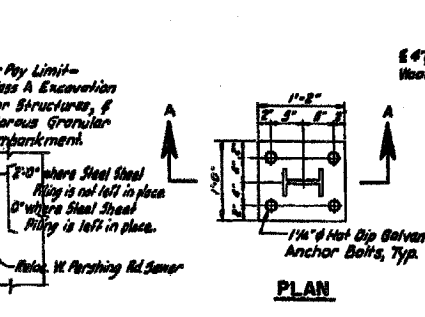
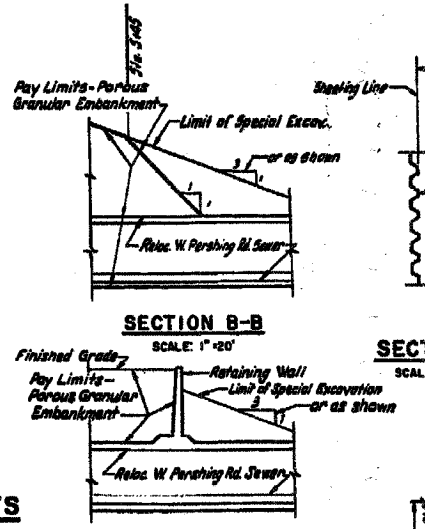
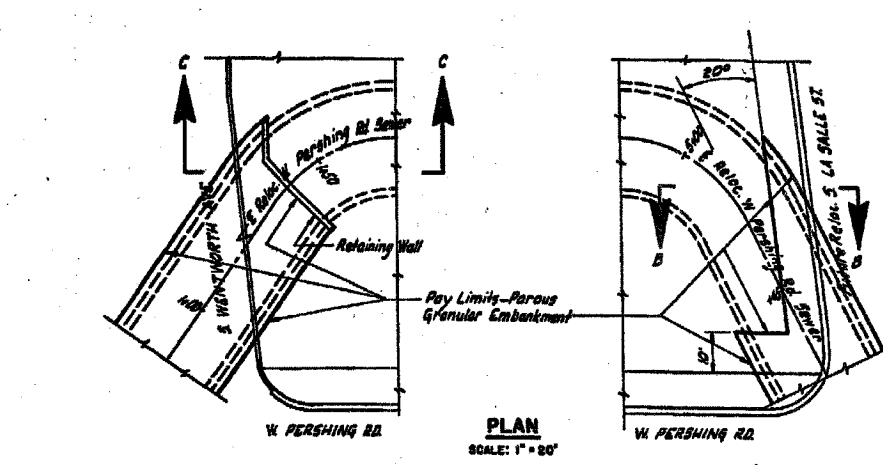
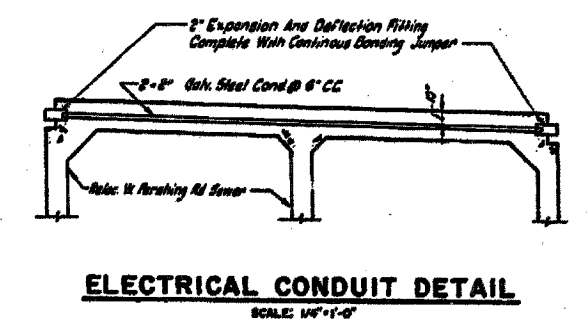
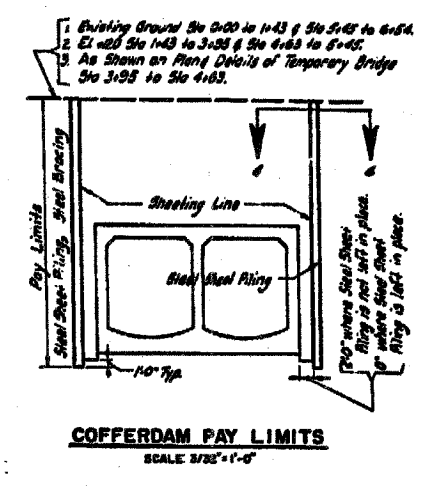
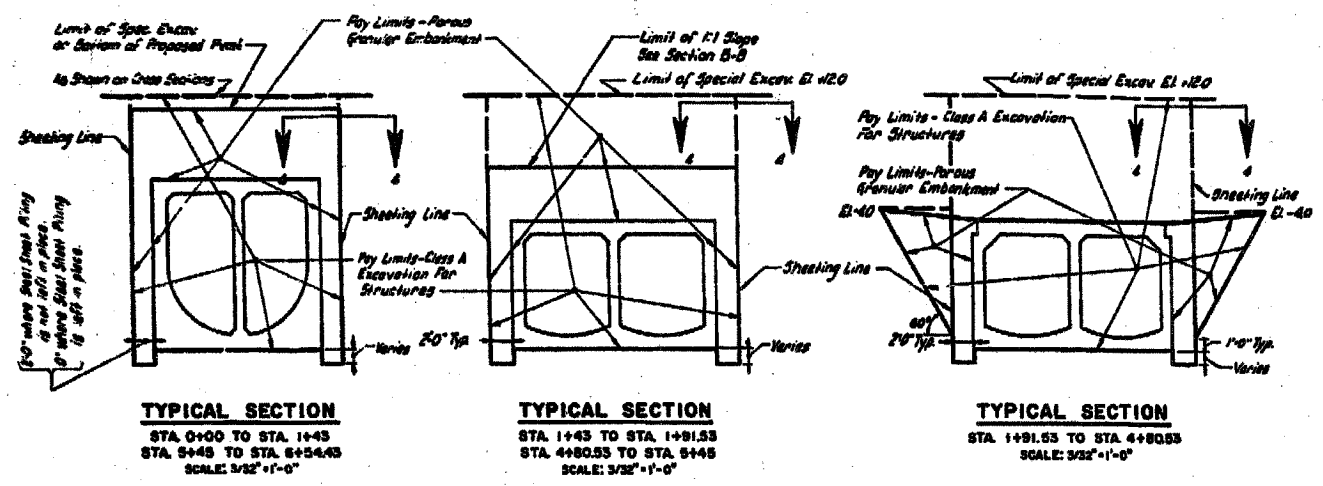


ADVIS NO.	SECTION	COUNTY	TOTAL SHEETS	SHEET NO.
F. A. 1.94	5.212.2-4B	COOK	54	54
FOR ROAD DIST. NO. 6 ILLINOIS PROJECT 1-2-3-4-5-6				



- NOTES:**
1. For Location of Sections 1-1, 2-2, 3-3, see sheet S-6.
 2. For Details of Construction & Expansion Joints, see sheet S-6.
 3. For Location of Electrical Conduit & Guard Rail Anchor Bolts, see sheet S-6.

CITY OF CHICAGO
DEPARTMENT OF PUBLIC WORKS
BUREAU OF ENGINEERING
SOUTH ROUTE SUPERHIGHWAY
SECTION 5-2322-4B
W. PERSHING ROAD BRIDGE
SEWER MISCELLANEOUS
DETAILS

SHEET CUL-13 OF CUL-16

ILLINOIS DEPARTMENT OF TRANSPORTATION
F.A.I. 94/90 (DAN RYAN EXPRESSWAY)
GARFIELD BLVD TO 31ST STREET (NB LOCAL LANES)
MWRD CULVERT, N. OF 39TH ST.,
COOK COUNTY, S.N. 016-2625
EXISTING GENERAL DETAILS

SCALE: N.T.S. DRAWN BY: BDC
DATE: JUNE 9, 2006 CHECKED BY: BLU

FOR INFORMATION ONLY

BOWMAN, BARRETT & ASSOCIATES INC.
CONSULTING ENGINEERS
Chicago, Illinois
312.228.0100
www.bbainc.com

6/17/2006 6:24:15 PM