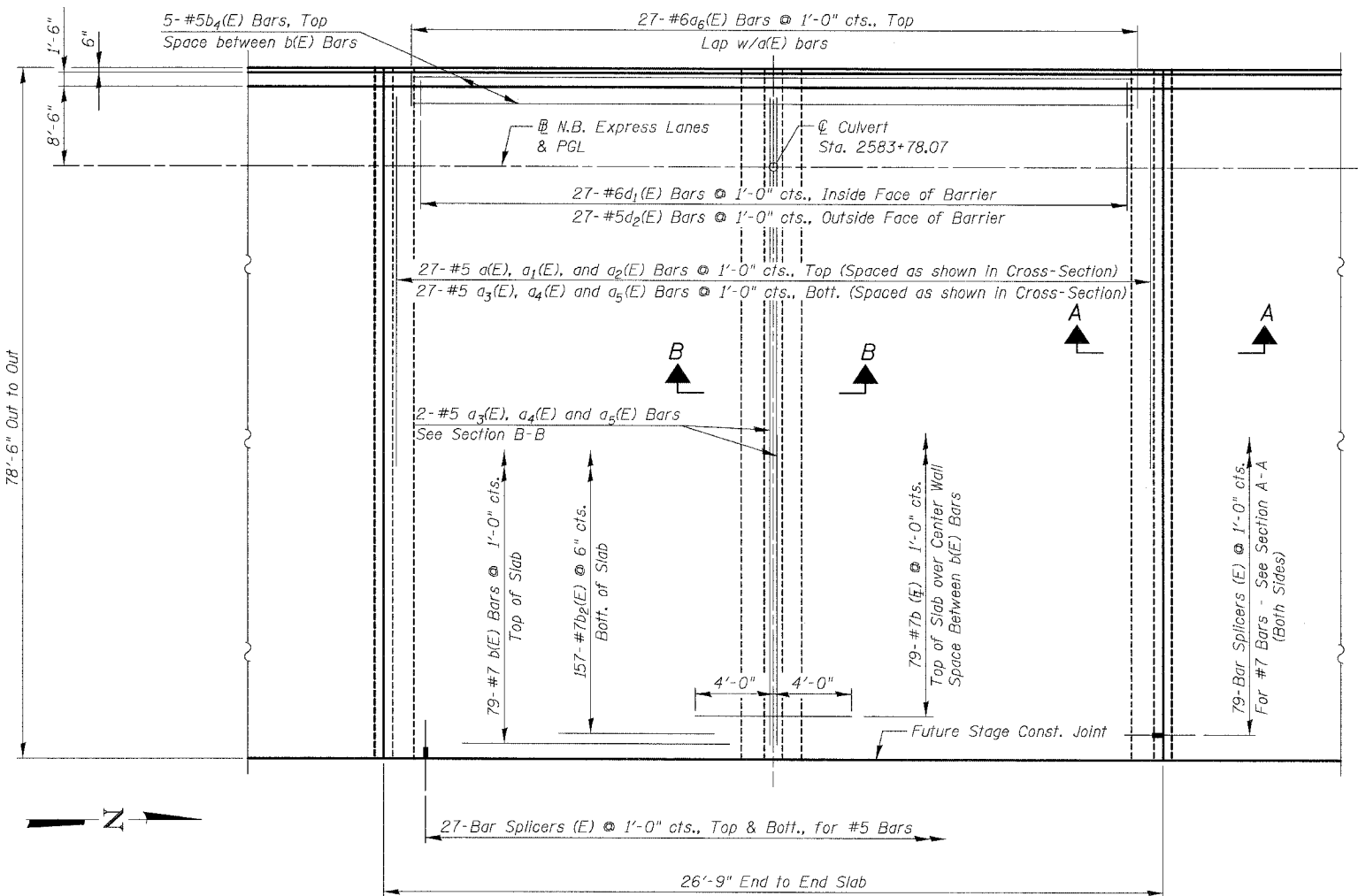
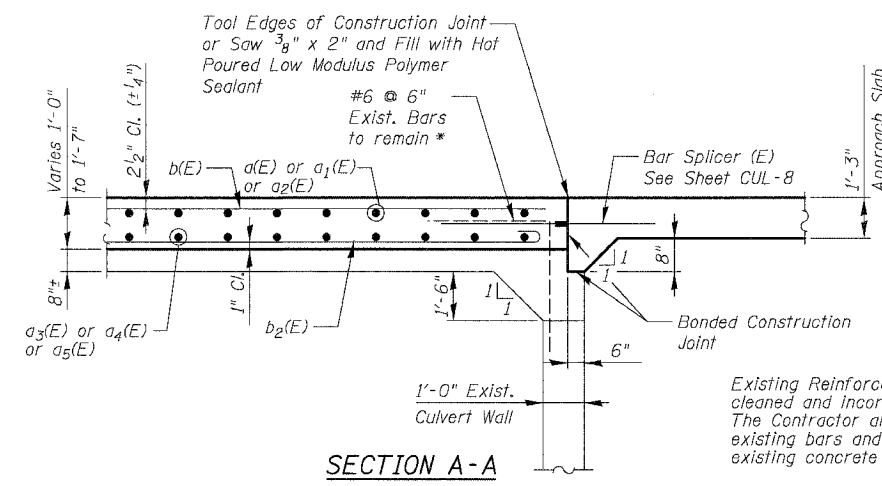


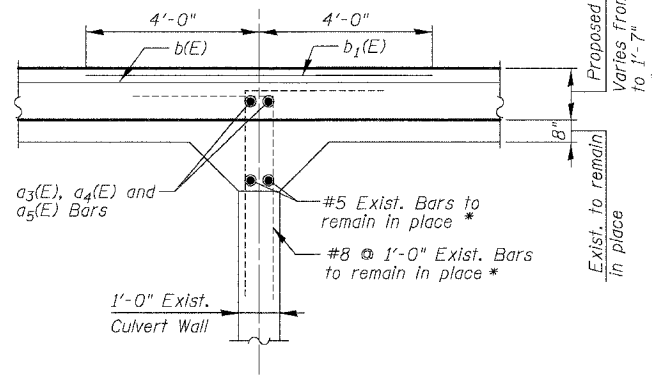
|                     |                                    |                  |              |           |
|---------------------|------------------------------------|------------------|--------------|-----------|
| F.A.I.              | SECTION                            | COUNTY           | TOTAL SHEETS | SHEET NO. |
| 94/90               |                                    | COOK             | 565          | 440       |
| STA.                | TO STA.                            |                  |              |           |
| FED. ROAD DIST. NO. | ILLINOIS                           | FED. AID PROJECT |              |           |
| 62301               | *I2021-922 PT2 ETC 2324.6-1P1 R-10 |                  |              |           |



PLAN



SECTION A-A



SECTION B-B

Existing Reinforcement Bars shown are to be cleaned and incorporated into new construction. The Contractor also has the option to cut the existing bars and use new bars anchored to the existing concrete pier per approval of the Engineer.

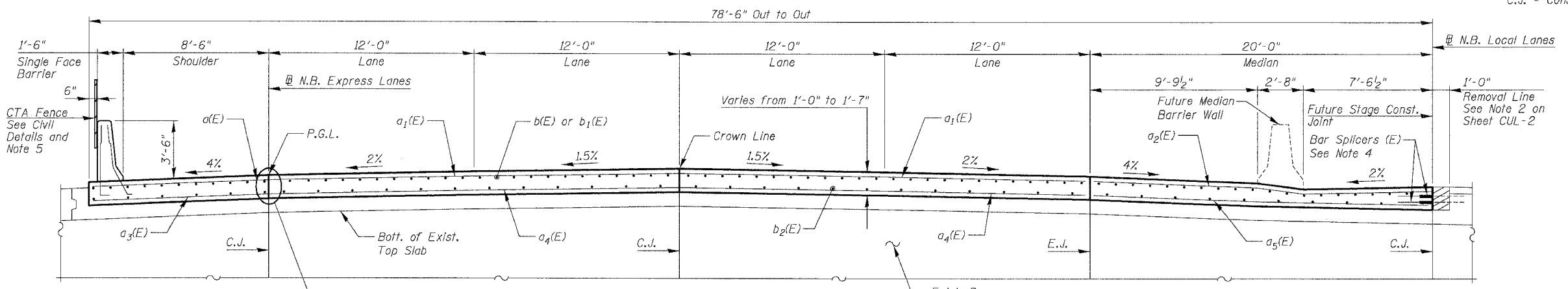
Additional reinforcement shall not be measured for payment but shall be included in the cost of "Reinforcement Bars, Epoxy Coated".

NOTES

1. Reinforcement Bars designated (E) shall be epoxy coated.
2. See Sheet CUL-5 for Top Slab Details and Bill of Material.
3. See Sheet CUL-8 for Bar Splicer Details.
4. Contractor shall provide bar splicers as shown here and on Sheet CUL-6. Install Stage I portion and provide Stage II portion to the Engineer. Plug threaded coupler with plastic nipple or H.S. Bolt for protection. Cost included with "Bar Splicers".
5. Provide terminal posts and fence "expansion" joint at end of Approach Pavement. Space fence posts to miss barrier joints.

ABBREVIATIONS

- E.J. = Expansion Joint
- C.J. = Construction Joint



CROSS-SECTION  
(Looking Upstation)

FOR INFORMATION ONLY

BOWMAN, BARRETT & ASSOCIATES INC.  
CONSULTING ENGINEERS  
Chicago, Illinois  
312.228.0100  
www.bbandinc.com

| REVISIONS |      |
|-----------|------|
| NAME      | DATE |
|           |      |
|           |      |
|           |      |
|           |      |
|           |      |
|           |      |
|           |      |
|           |      |
|           |      |

SHEET CUL-15 OF CUL-16  
ILLINOIS DEPARTMENT OF TRANSPORTATION  
F.A.I. 94/90 (DAN RYAN EXPRESSWAY)  
GARFIELD BLVD TO 31ST STREET (NB LOCAL LANES)  
MWRD CULVERT, N. OF 39TH ST.,  
COOK COUNTY, S.N. 016-2625  
TOP SLAB FROM CONTRACT 62300  
SCALE: N.T.S. DRAWN BY:  
DATE: JUNE 9, 2006 CHECKED BY: BLU