

F.A.I.	SECTION	COUNTY	TOTAL SHEETS	SHEET NO.
94/90	*	COOK	588	44
STA. 3553+00.00		TO STA. 3585+00.00		
FED. ROAD DIST. NO.		ILLINOIS	FED. AID PROJECT	

62303 • (2021-922 PT2 ETC 2324.6-1P) R-11

PROP. CURVE D3903  
 P.I. STA = 7044+30.25  
 N: = 1,878,475.96  
 E: = 1,175,675.24  
 $\Delta$  = 7° 22' 41" (RT)  
 D = 1° 02' 40"  
 R = 5,486.00'  
 T = 353.70'  
 L = 706.43'  
 E = 11.39'  
 P.C. STA = 7040+76.55  
 N: = 1,878,823.36  
 E: = 1,175,608.75  
 P.T. STA = 7047+82.98  
 N: = 1,878,122.90  
 E: = 1,175,696.57

PROP. CURVE D3900  
 P.I. STA = 7040+46.54  
 N: = 1,878,852.84  
 E: = 1,175,603.11  
 $\Delta$  = 0° 47' 26" (LT)  
 D = 1° 19' 02"  
 R = 4,350.00'  
 T = 30.02'  
 L = 60.03'  
 E = 0.10'  
 P.C. STA = 7040+16.52  
 N: = 1,878,882.40  
 E: = 1,175,597.87  
 P.T. STA = 7040+76.55  
 N: = 1,878,823.36  
 E: = 1,175,608.75

@ S. WENTWORTH AVE. STA 56+69.85  
 @ W. PERSHING ROAD  
 N: = 1,879,107.55  
 E: = 1,175,590.76

@ S. WENTWORTH AVE. STA 100+00  
 @ W. PERSHING ROAD  
 N: = 1,879,107.55  
 E: = 1,175,603.86

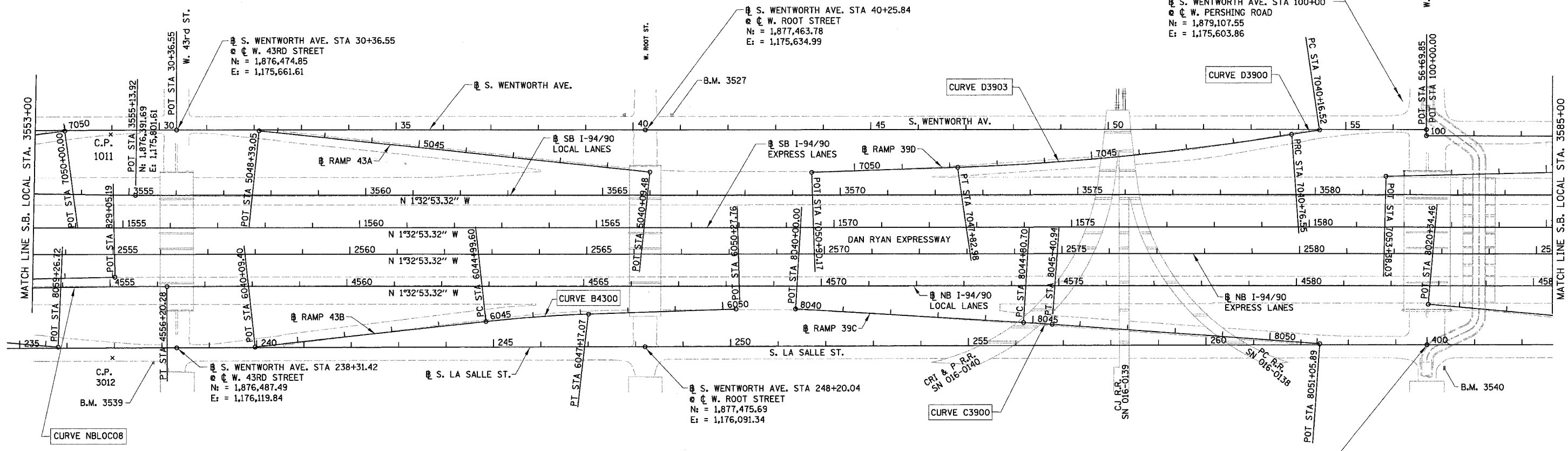
PROP. CURVE NBLOC08  
 P.I. STA = 4554+19.42  
 N: = 1,876,262.66  
 E: = 1,175,997.17  
 $\Delta$  = 1° 32' 04" (RT)  
 D = 0° 22' 55"  
 R = 15,000.00'  
 T = 200.89'  
 L = 401.75'  
 E = 1.35'  
 P.C. STA = 4552+18.53  
 N: = 1,876,062.07  
 E: = 1,176,007.97  
 P.T. STA = 4556+20.28  
 N: = 1,876,463.47  
 E: = 1,175,991.74

PROP. CURVE B4300  
 P.I. STA = 6046+08.39  
 N: = 1,877,246.14  
 E: = 1,176,032.59  
 $\Delta$  = 4° 21' 02" (RT)  
 D = 2° 00' 02"  
 R = 2,864.00'  
 T = 108.79'  
 L = 217.47'  
 E = 2.07'  
 $\theta$  = 3.0%  
 S.A. = STA 6044+79.60  
 TO 6045+09.60  
 S.R. = STA 6047+07.07  
 TO 6047+37.07  
 P.C. STA = 6044+99.60  
 N: = 1,877,138.36  
 E: = 1,176,047.37  
 P.T. STA = 6047+17.07  
 N: = 1,877,354.72  
 E: = 1,176,026.03

PROP. CURVE C3900  
 P.I. STA = 8045+10.82  
 N: = 1,878,300.35  
 E: = 1,176,021.08  
 $\Delta$  = 0° 41' 25" (RT)  
 D = 1° 08' 45"  
 R = 5,000.00'  
 T = 30.12'  
 L = 60.24'  
 E = 0.09'  
 P.C. STA = 8044+80.70  
 N: = 1,878,270.25  
 E: = 1,176,020.07  
 P.T. STA = 8045+40.94  
 N: = 1,878,330.44  
 E: = 1,176,022.46

@ S. LASALLE ST. STA 400+00.00 AH  
 STA 264+66.03 BK  
 @ W. PERSHING ROAD  
 N: = 1,879,121.00  
 E: = 1,176,043.89

- NOTES:**
1. AVERAGE GRID TO GROUND CONVERSION  
 FACTOR = 1.000010988654360
  2. FOR BENCH MARK INFORMATION, SEE SHEET ALT-16 OF  
 ALIGNMENT PLAN SHEETS.
  3. FOR RAMP P.O.T. INFORMATION, SEE SHEET ALT-16 OF  
 ALIGNMENT PLAN SHEETS.



BOWMAN, BARRETT & ASSOCIATES INC.  
 CONSULTING ENGINEERS  
 Chicago, Illinois  
 312.228.0100  
 www.bbainc.com

REVISIONS	
NAME	DATE

ILLINOIS DEPARTMENT OF TRANSPORTATION  
 F.A.I. 94/90 (DAN RYAN EXPRESSWAY)  
 GARFIELD BLVD TO 31ST STREET (SB LOCAL LANES)  
 SB LOCAL LANE RECONSTRUCTION

**ALIGNMENT PLAN**

SCALE: 1"=100'  
 DATE: 06/09/06  
 DRAWN BY: JDC  
 CHECKED BY: RS

