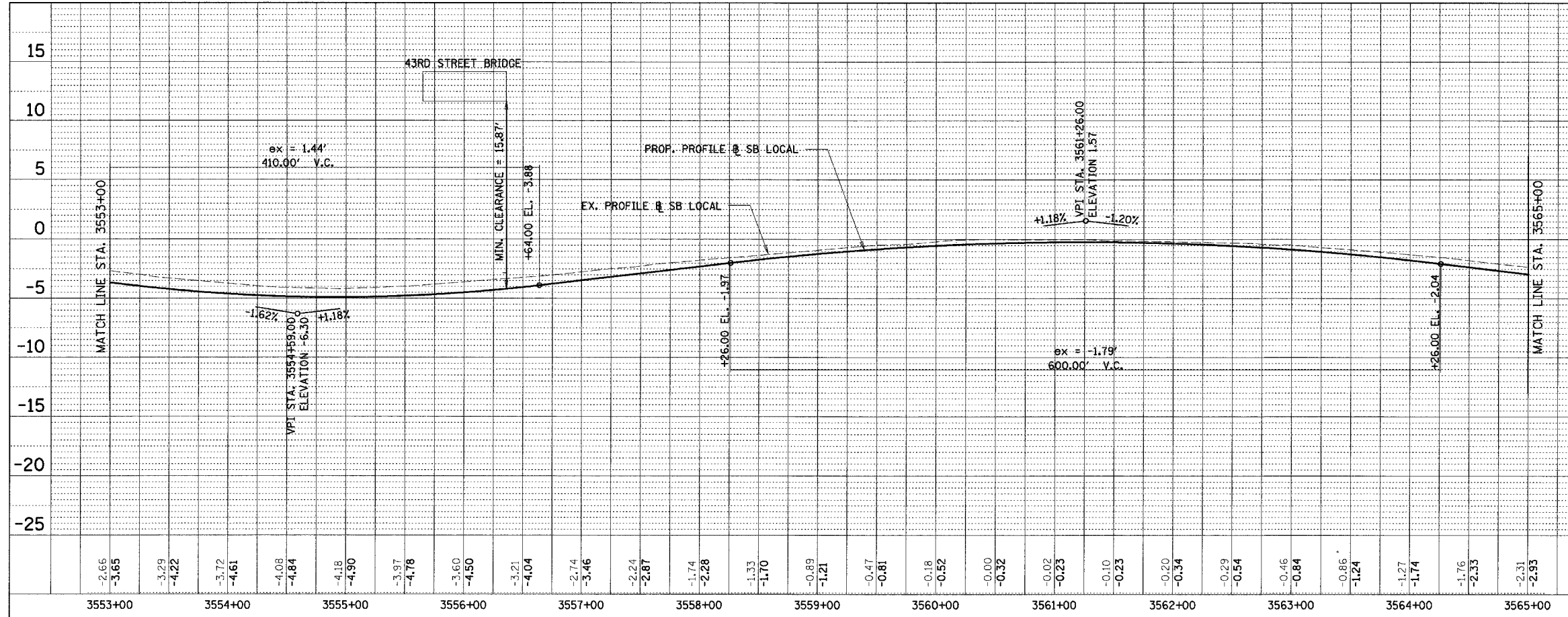
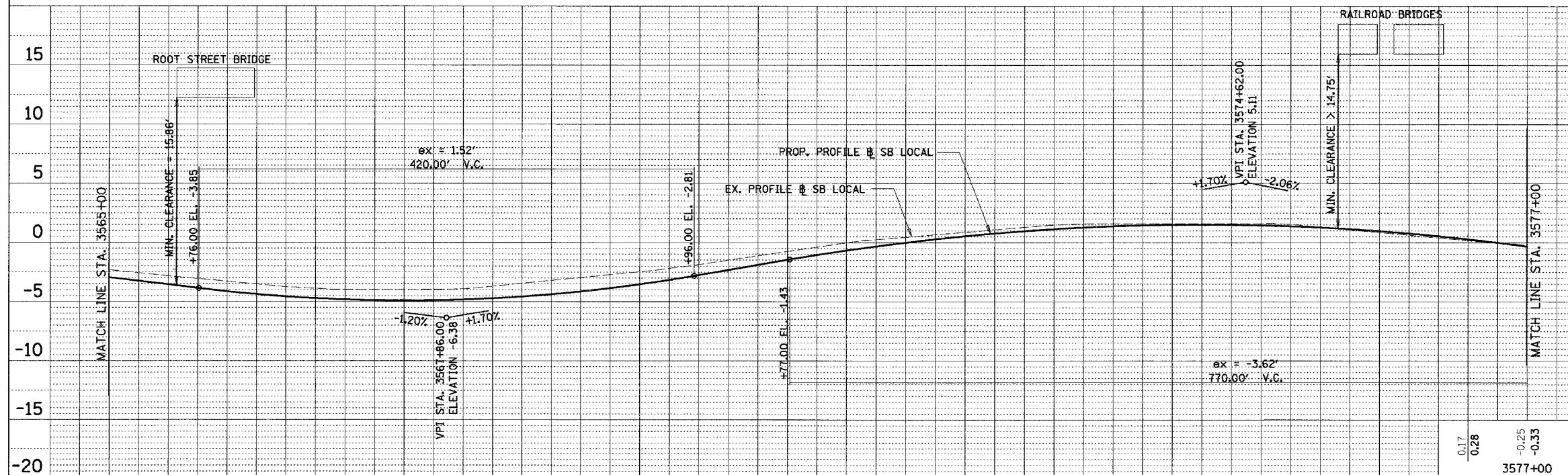


F.A.I.	SECTION	COUNTY	TOTAL SHEETS	SHEET NO.
94/90	*	COOK	588	72
STA.		TO STA.		
FED. ROAD DIST. NO.		ILLINOIS	FED. AID PROJECT	

PLAN	SURVEYED	DATE
NOTE BOOK	ALIGNMENT CHECKED	
NO.	BY	



PLAN	SURVEYED	DATE
NOTE BOOK	ALIGNMENT CHECKED	
NO.	BY	



BOWMAN, BARRETT & ASSOCIATES INC.
 CONSULTING ENGINEERS
 Chicago, Illinois
 312.228.0100
 www.bbainc.com

3567+00	-3.97	-4.81	-3.97	-4.30	-3.90	-4.81	-3.44	-4.56	-2.95	-4.12	-2.46	-3.52	-1.87	-2.74	-1.13	-1.89	-0.38	-1.06	0.25	-0.32	0.67	0.29	1.09	0.78	1.49	1.14	1.60	1.39	1.60	1.51	1.60	1.51	1.54	1.38	1.09	1.14	0.63	0.77
---------	-------	-------	-------	-------	-------	-------	-------	-------	-------	-------	-------	-------	-------	-------	-------	-------	-------	-------	------	-------	------	------	------	------	------	------	------	------	------	------	------	------	------	------	------	------	------	------

0.17	0.28	-0.25	-0.33
------	------	-------	-------

REVISIONS	
NAME	DATE

ILLINOIS DEPARTMENT OF TRANSPORTATION
 F.A.I. 94/90 (DAN RYAN EXPRESSWAY)
 GARFIELD BLVD TO 31ST STREET (SB LOCAL LANES)
 PROFILES - SOUTHBOUND LOCAL LANES
 SCALE: 1" = 50' HORIZ
 DATE: 06/09/06
 DRAWN BY: JDC
 CHECKED BY: RS

6/8/2006 10:29 AM