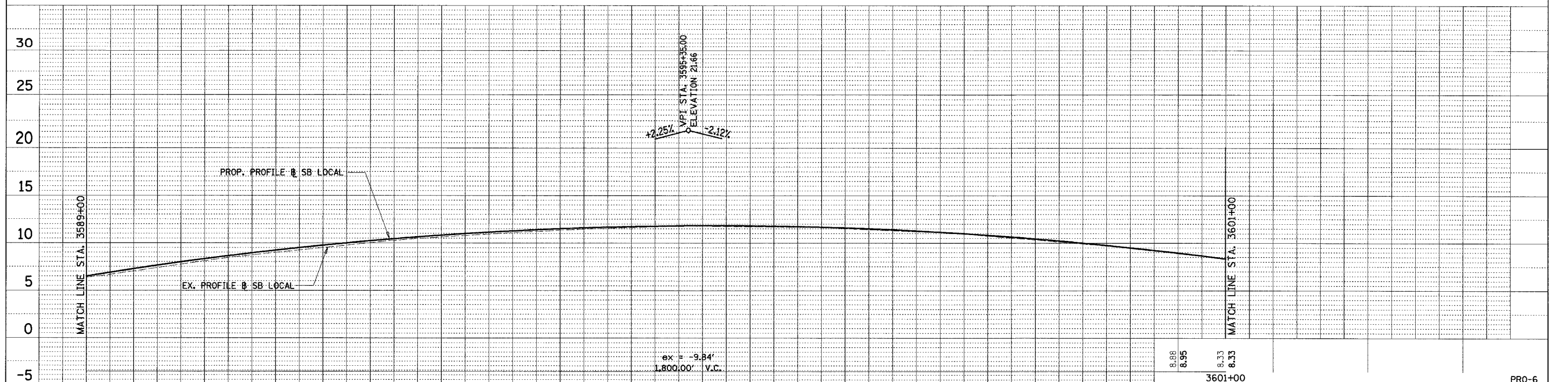
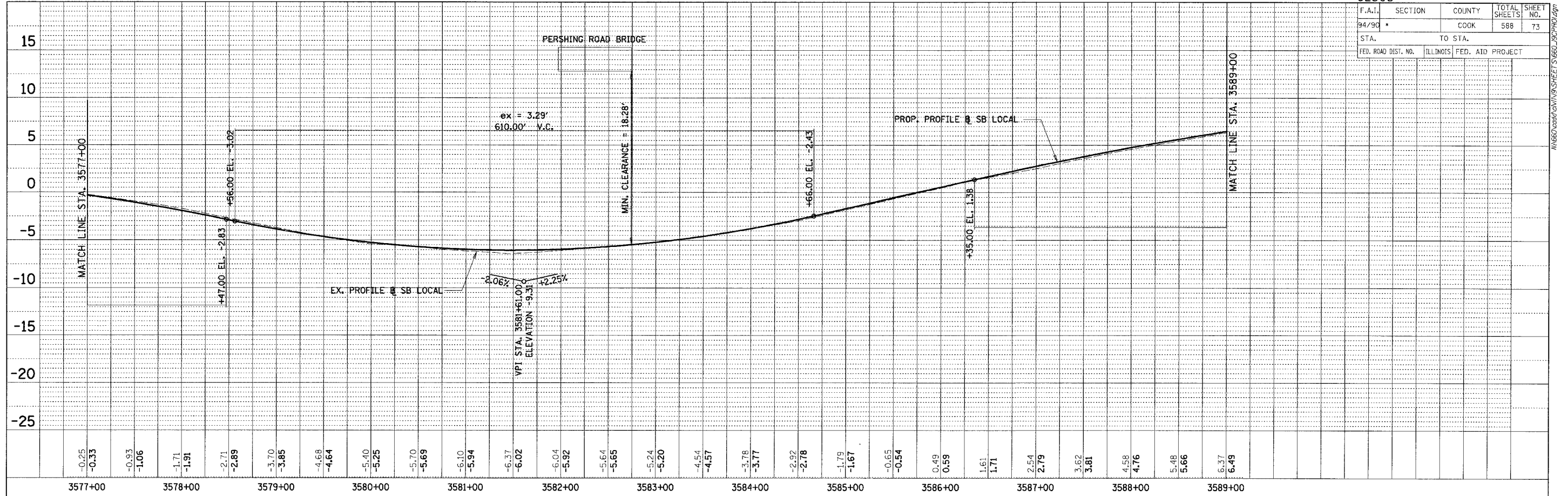


F.A.I.	SECTION	COUNTY	TOTAL SHEETS	SHEET NO.
94/90	*	COOK	588	73
STA.		TO STA.		
FED. ROAD DIST. NO.	ILLINOIS	FED. AID PROJECT		



PLAN	SURVEYED	BY	DATE
NOTE BOOK	CHECKED		
NO.	ALIGNMENT		
	FILE NAME		

PLAN	SURVEYED	BY	DATE
NOTE BOOK	CHECKED		
NO.	ALIGNMENT		
	FILE NAME		

3577+00	-0.25	-0.33	-0.93	-1.06	-1.71	-1.91	-2.71	-2.89	-3.70	-3.85	-4.68	-4.64	-5.40	-5.25	-5.70	-5.69	-6.10	-5.94	-6.37	-6.02	-6.04	-5.92	-5.64	-5.65	-5.24	-5.20	-4.54	-4.57	-3.78	-3.77	-2.92	-2.78	-1.79	-1.67	-0.65	-0.54	0.49	0.59	1.61	1.71	2.54	2.79	3.62	3.81	4.58	4.76	5.48	5.66	6.37	6.49
3589+00	6.49	7.03	7.27	7.73	7.98	8.44	8.64	8.99	9.23	9.51	9.76	10.02	10.23	10.47	10.64	10.78	10.99	11.10	11.28	11.37	11.51	11.55	11.67	11.73	11.78	11.78	11.78	11.83	11.73	11.81	11.67	11.74	11.52	11.60	11.31	11.40	11.09	11.15	10.75	10.83	10.34	10.45	9.92	10.01	9.44	9.51				

REVISIONS	
NAME	DATE

ILLINOIS DEPARTMENT OF TRANSPORTATION  
**F.A.I. 94/90 (DAN RYAN EXPRESSWAY)**  
 GARFIELD BLVD TO 31ST STREET (SB LOCAL LANES)

**PROFILES - SOUTHBOUND LOCAL LANES**

SCALE: 1" = 5' VERTICAL  
 1" = 50' HORIZ

DATE: 06/09/06

DRAWN BY: JDC  
 CHECKED BY: RS

PRO-6

**BOWMAN, BARRETT & ASSOCIATES INC.**  
 CONSULTING ENGINEERS  
 Chicago, Illinois  
 312.228.0100  
 www.bbainc.com