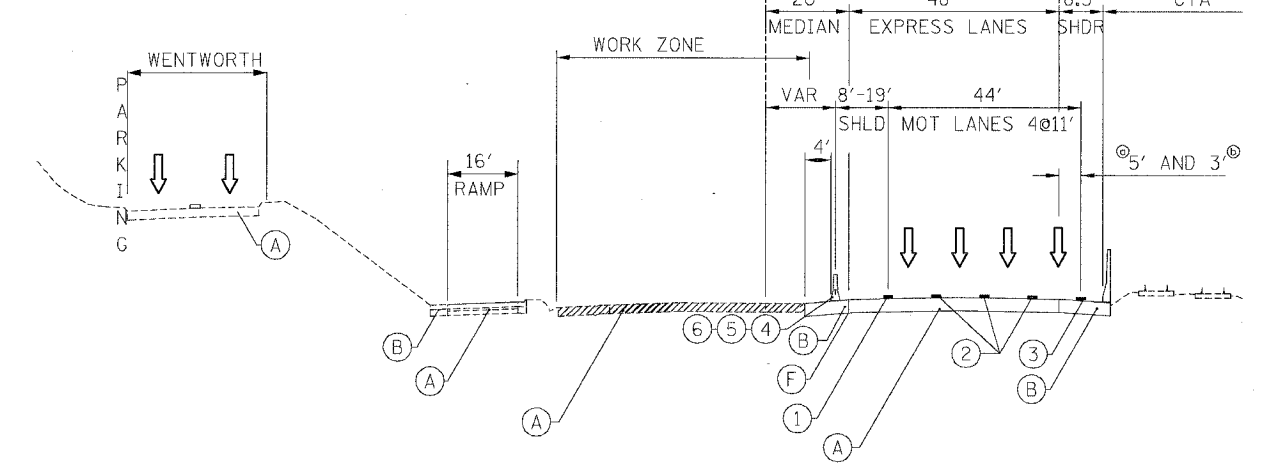
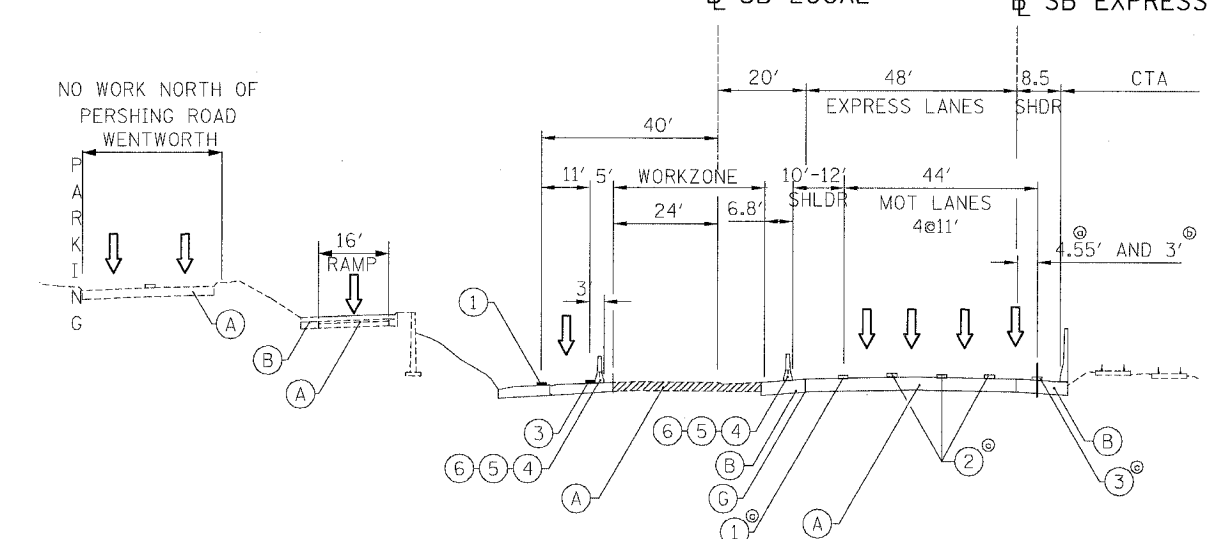


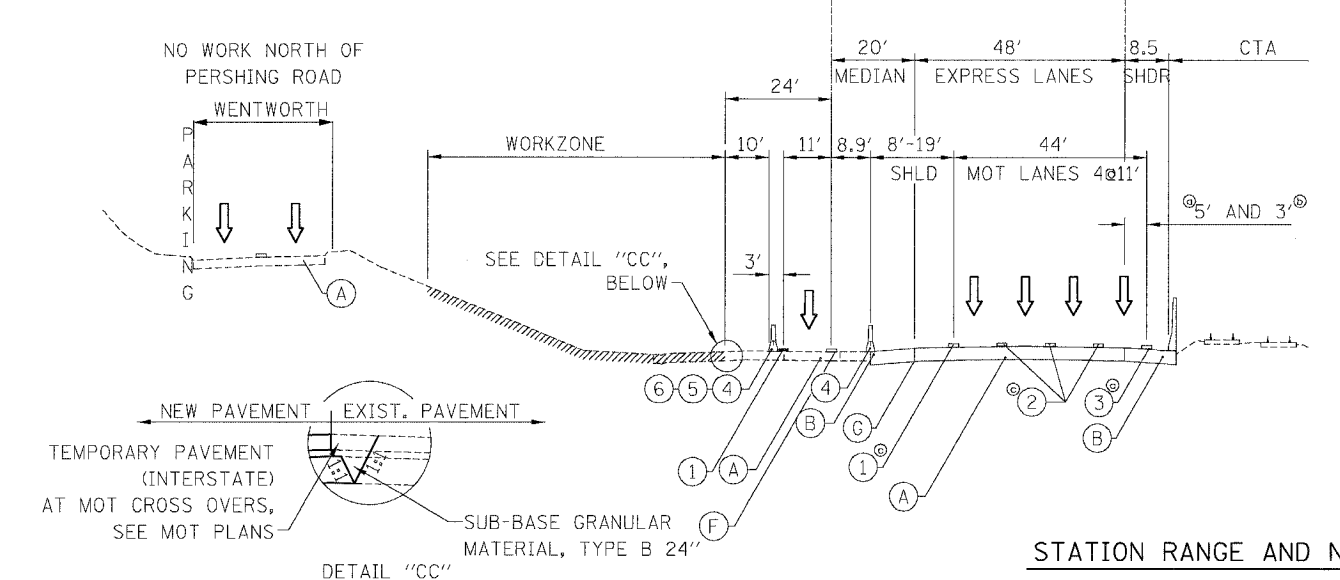
**STAGE 1
STAGE 2 (S. OF PERSHING)**



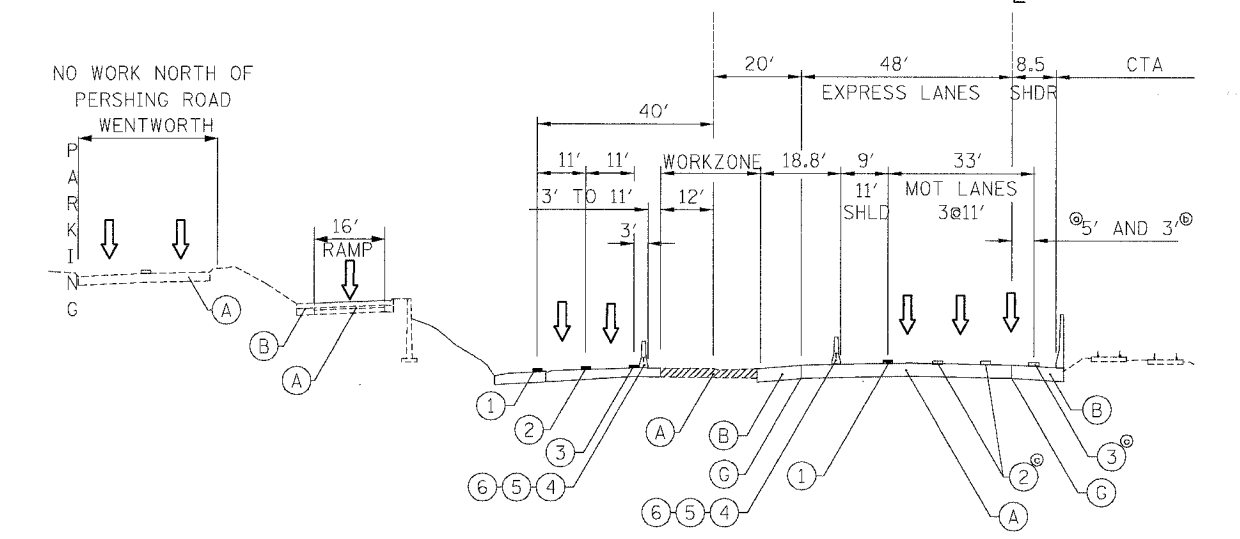
SUB-STAGE 2B



**SUB-STAGE 1A AND 2A
STAGE 2 (N. OF PERSHING)**



STAGE 3



STATION RANGE AND NOTES

- ⊙ 5' STA 1528+87.6 TO 1608+00.0
STA 1622+00.0 TO 1643+00.0
- ⊙ 3' STA 1609+40.0 TO 1620+00.0
- ⊙ TEMPORARY PAVEMENT MARKINGS
INSTALLED IN STAGE I
- ⊙ MILLING AND RESURFACING ADJACENT
TO THE RAMP SHALL BE DONE DURING
OFF PEAK HOURS. 2 LANES OF TRAFFIC
SHOULD BE OPEN DURING PEAK HOURS.
- ⊙ FRONTAGE ROAD WORK:
STAGE I STA 3529+00.0 TO 3543+57.0
STA 3579+31.0 TO 3581+88.0
- STAGE 2 STA 3552+60.6 TO 3563+30.4
- STAGE 3 STA 3552+60.0 TO 3555+61.1

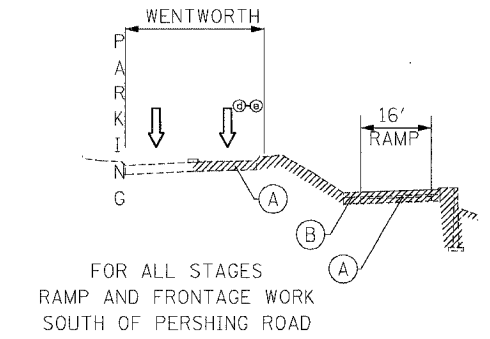
EXISTING

- (A) PAVEMENT
- (B) SHOULDER
- (C) EXISTING BARRIER WALL
- (D) TEMPORARY BARRIER WALL
- (E) TEMPORARY PAVEMENT
- (G) PAVEMENT-SHOULDER JOINT
- (F) PAVEMENT MARKING

PROPOSED

- (1) PAVEMENT MARKING-LINE 4" (WHITE)
- (2) PAVEMENT MARKING-LINE 5" (WHITE SKIP DASH)
- (3) PAVEMENT MARKING-LINE 4" (YELLOW)
- (4) TEMPORARY CONCRETE BARRIER
- (5) TEMPORARY PAVEMENT MARKING - LINE 6"
- (6) MONODIRECTIONAL PRISMATIC BARRIER REFLECTOR
- (7) DRUM OR BARRICADE TYPE II WITH STEADY BURN LIGHT

BOWMAN, BARRETT & ASSOCIATES INC
CONSULTING ENGINEERS
Chicago, Illinois
312.228.0100
www.bbainc.com



REVISIONS	
NAME	DATE

MOTTS-2
ILLINOIS DEPARTMENT OF TRANSPORTATION
F.A.I. 94/90 (DAN RYAN EXPRESSWAY)
GARFIELD BLVD TO 31ST STREET (SB LOCAL LANES)
MAINTENANCE OF TRAFFIC
TYPICAL SECTIONS
SCALE: NTS
DATE: 06/09/06
DRAWN BY: RA
CHECKED BY: RS