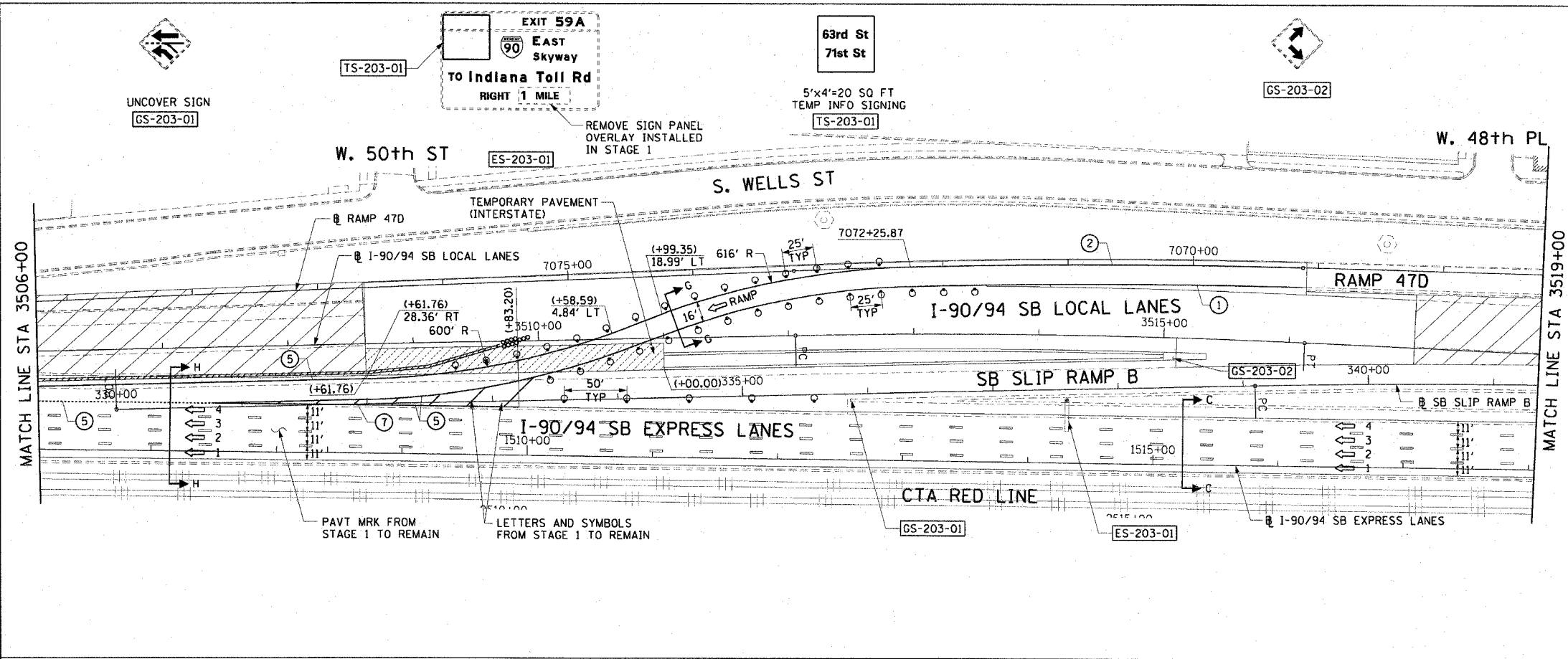
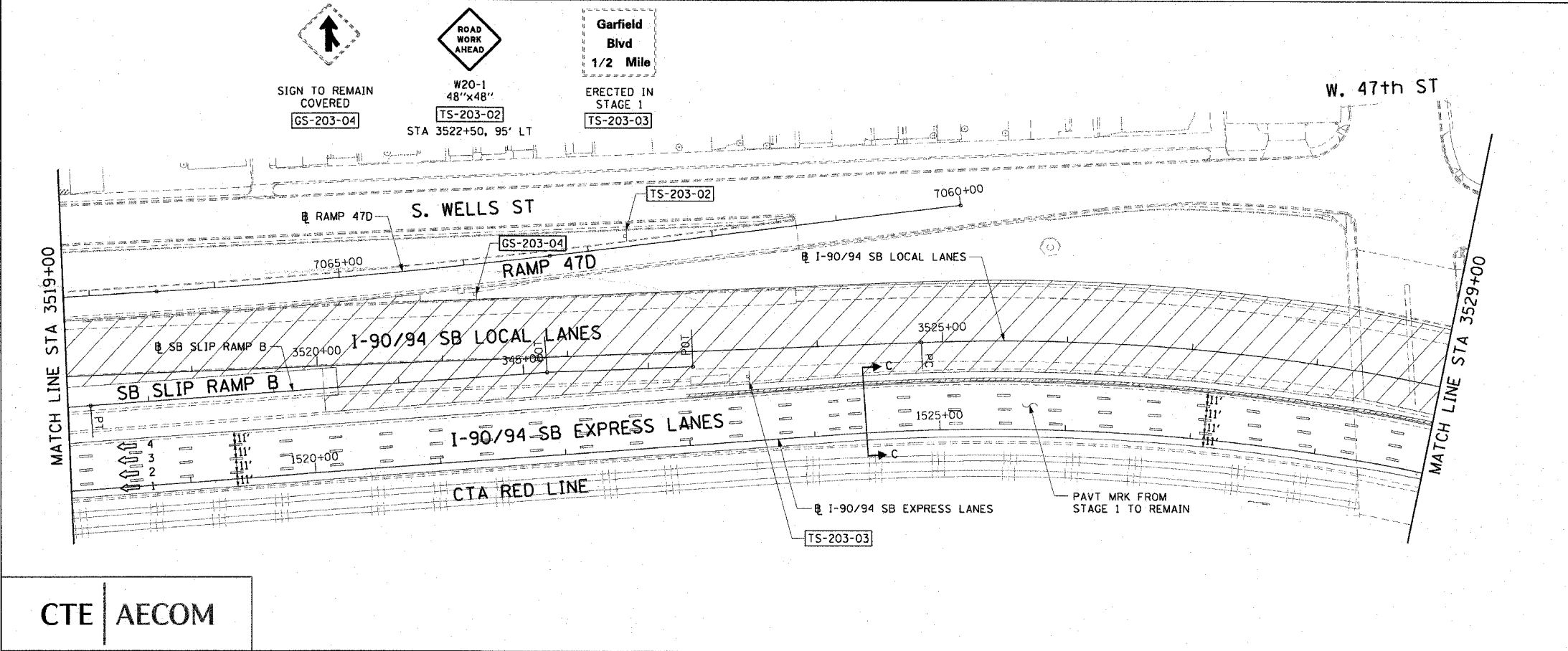


F.A.I. RTE.	SECTION	COUNTY	TOTAL SHEETS	SHEET NO.
90/94	*	COOK	588	97
STA. 3506+00		TO STA. 3529+00		
FED. ROAD DIST. NO. 1		ILLINOIS FED. AID PROJECT		
62303		(2021-922 PT2 ETC 2324.6-1P) R-11		



- LEGEND:**
- 1 → LANE NUMBER AND DIRECTION OF TRAFFIC
  - [Hatched Box] WORK AREA
  - [Diagonal Lines] TEMPORARY PAVEMENT
  - [Dashed Line] IMPACT ATTENUATORS, TEMPORARY (NON-REDIRECTIVE), TEST LEVEL 3
  - [Circle with X] DRUM OR BARRICADE TYPE II WITH STEADY BURNING LIGHT
  - [T Symbol] BARRICADE TYPE III
  - [Dashed Line] TEMPORARY CONCRETE BARRIER
  - ① LINE 4" (YELLOW EDGE)
  - ② LINE 4" (WHITE EDGE)
  - ③ LINE 4" (SKIP DASH, 6' SKIP - 2' DASH, WHITE)
  - ④ LINE 5" (SKIP DASH, 30' SKIP - 10' DASH, WHITE)
  - ⑤ LINE 8" (WHITE GORE LINE)
  - ⑥ LINE 8" (SKIP DASH, 12' SKIP - 3' DASH, WHITE)
  - ⑦ LINE 12" (DIAGONAL, 30" C-C, WHITE)
  - ⑧ LETTERS AND SYMBOLS
  - [ES-XXX-XX] EXISTING OVERHEAD OR CANTILEVER SIGNS
  - [GS-XXX-XX] EXISTING POST MOUNTED SIGNS
  - [TS-XXX-XX] TEMPORARY SIGNS
- +XX.XX STATION PROVIDED FROM THE ± SB I-90/94 EXPRESS LANES  
 (+XX.XX) STATION PROVIDED FROM THE ± SB I-90/94 LOCAL LANES



- NOTES:**
- SEE SHEET MOTTS-01 FOR TYPICAL SECTIONS.
  - SEE TEMPORARY SIGN PANEL SHEETS FOR DETAILS.

REVISIONS		MOT-203
NAME	DATE	
		ILLINOIS DEPARTMENT OF TRANSPORTATION F.A.I. 90/94 (DAN RYAN EXPRESSWAY) GARFIELD BLVD TO 31ST STREET (SB LOCAL LANES)  SUGGESTED STAGES OF CONSTRUCTION AND TRAFFIC CONTROL STAGE 2  SCALE: 1"=50' DATE: June 9, 2006 DRAWN BY: PHP CHECKED BY: RMG

CTE | AECOM

6/7/2006 1:56:07 PM I:\P04468\ch110\entrs\18 & 19\STPC017 19\mstg\mstg\_mol\_195192\_03.dwg