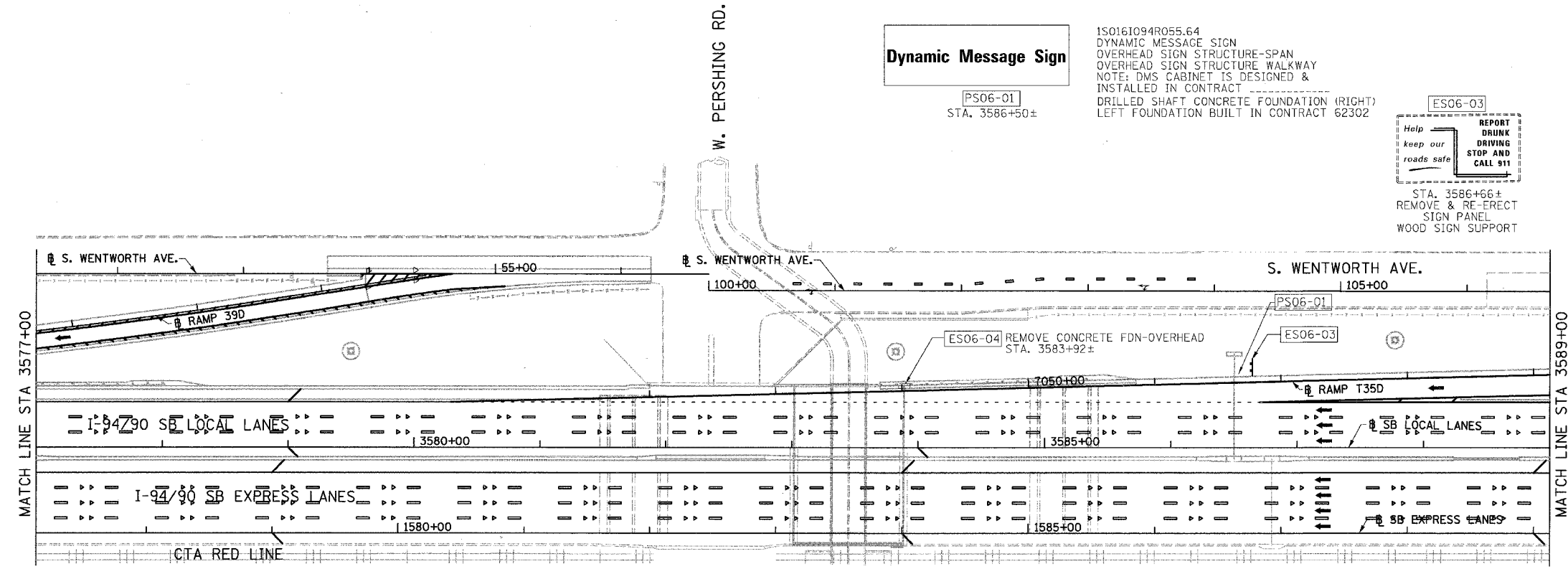
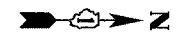


F.A.I.	SECTION	COUNTY	TOTAL SHEETS	SHEET NO.
94/90		COOK	588	243
STA.		TO STA.		
FED. ROAD DIST. NO.		ILLINOIS	FED. AID PROJECT	
62303		(2021-922 PT2 ETC 2324.6-1P) R-11		



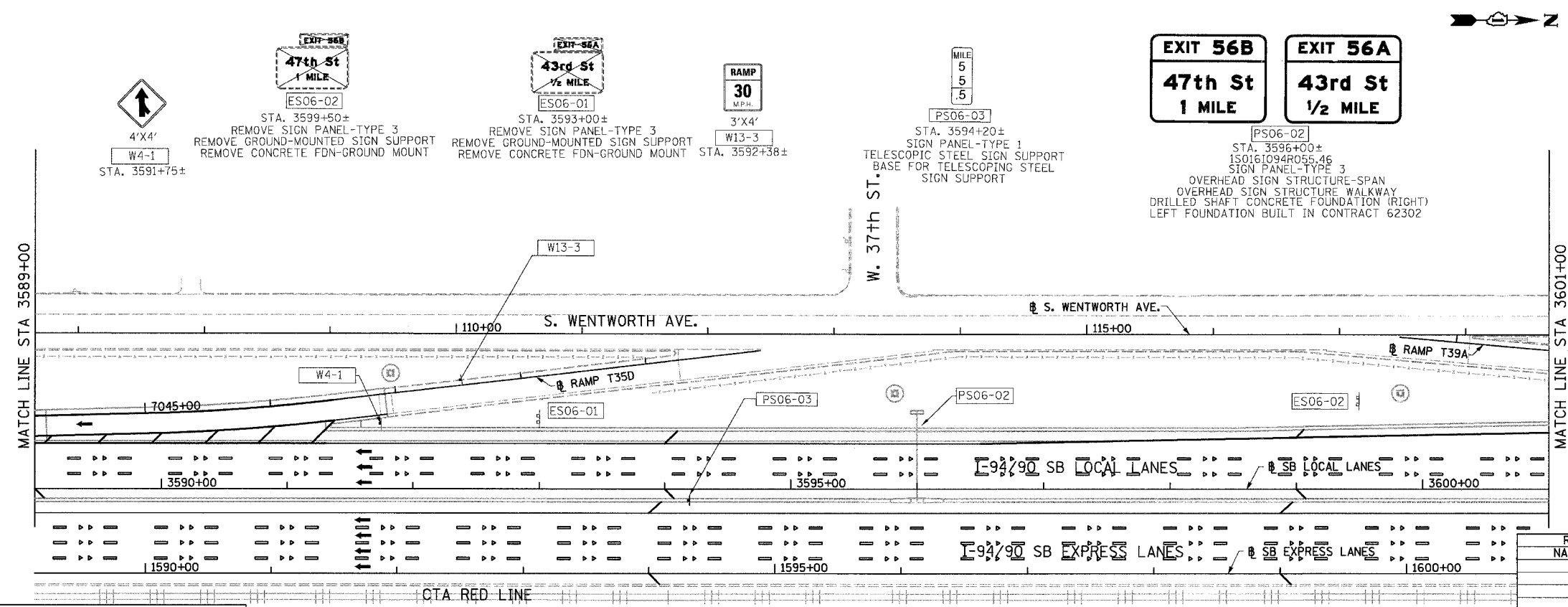
Dynamic Message Sign

PS06-01
STA. 3586+50±

150161094R055.64
DYNAMIC MESSAGE SIGN
OVERHEAD SIGN STRUCTURE-SPAN
OVERHEAD SIGN STRUCTURE WALKWAY
NOTE: DMS CABINET IS DESIGNED &
INSTALLED IN CONTRACT
DRILLED SHAFT CONCRETE FOUNDATION (RIGHT)
LEFT FOUNDATION BUILT IN CONTRACT 62302

ES06-03
Help keep our roads safe
REPORT DRUNK DRIVING STOP AND CALL 911
STA. 3586+66±
REMOVE & RE-ERECT SIGN PANEL
WOOD SIGN SUPPORT

ES06-04 REMOVE CONCRETE FDN-OVERHEAD
STA. 3583+92±



LEGEND:
ESXX-XX EXISTING OVERHEAD OR CANTILEVER SIGNS
GSXX-XX EXISTING POST MOUNTED SIGNS
PSXX-XX PROPOSED SIGNS

EXIT 56B
47th St
1 MILE

EXIT 56A
43rd St
1/2 MILE

4'x4'
W4-1
STA. 3591+75±

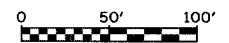
ES06-02
STA. 3599+50±
REMOVE SIGN PANEL-TYPE 3
REMOVE GROUND-MOUNTED SIGN SUPPORT
REMOVE CONCRETE FDN-GROUND MOUNT

ES06-01
STA. 3593+00±
REMOVE SIGN PANEL-TYPE 3
REMOVE GROUND-MOUNTED SIGN SUPPORT
REMOVE CONCRETE FDN-GROUND MOUNT

RAMP
30
MPH.
W13-3
STA. 3592+38±

PS06-03
STA. 3594+20±
SIGN PANEL-TYPE 1
TELESCOPIC STEEL SIGN SUPPORT
BASE FOR TELESCOPING STEEL SIGN SUPPORT

PS06-02
STA. 3596+00±
150161094R055.46
SIGN PANEL-TYPE 3
OVERHEAD SIGN STRUCTURE-SPAN
OVERHEAD SIGN STRUCTURE WALKWAY
DRILLED SHAFT CONCRETE FOUNDATION (RIGHT)
LEFT FOUNDATION BUILT IN CONTRACT 62302



REVISIONS	NAME	DATE

ILLINOIS DEPARTMENT OF TRANSPORTATION
F.A.I. 94/90 (DAN RYAN EXPRESSWAY)
GARFIELD BLVD TO 31ST STREET (SB LOCAL LANES)
PROPOSED SIGNING PLANS

SCALE: 1"=50'
DATE: 06/09/06
DRAWN BY: RV
CHECKED BY: MSA

K&E KAM ENGINEERING, INC.
CONSULTING ENGINEERS
707A Davis Road, Suite 205
Eglin, Illinois 60123-1369

SG-06
4/27/04 PM
6/9/2006