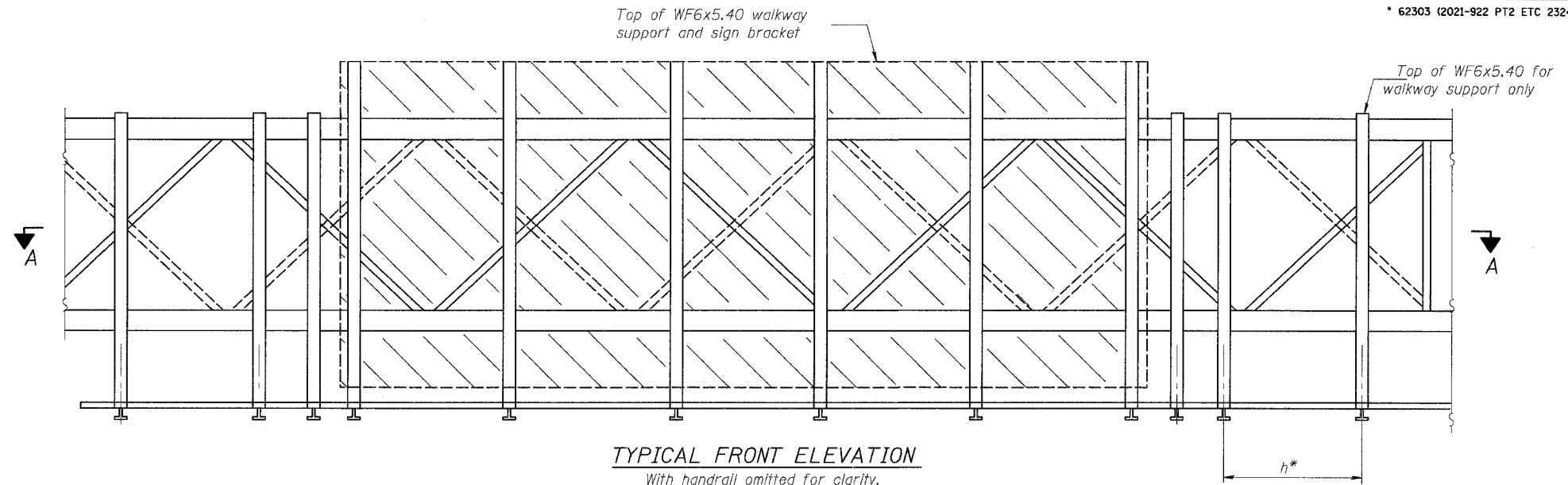
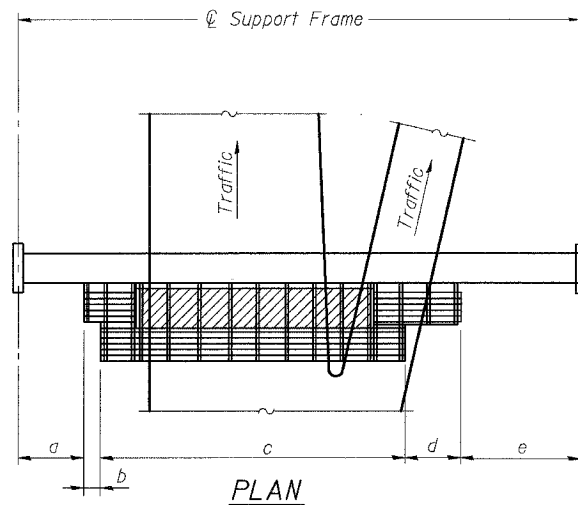


STATE OF ILLINOIS  
DEPARTMENT OF TRANSPORTATION

ROUTE NO.	SECTION	COUNTY	TOTAL SHEETS	SHEET NO.
F.A.I. RTE. 90/94		COOK	588	278
FED. ROAD DIST. NO. 1	ILLINOIS	FED. AID PROJECT-		

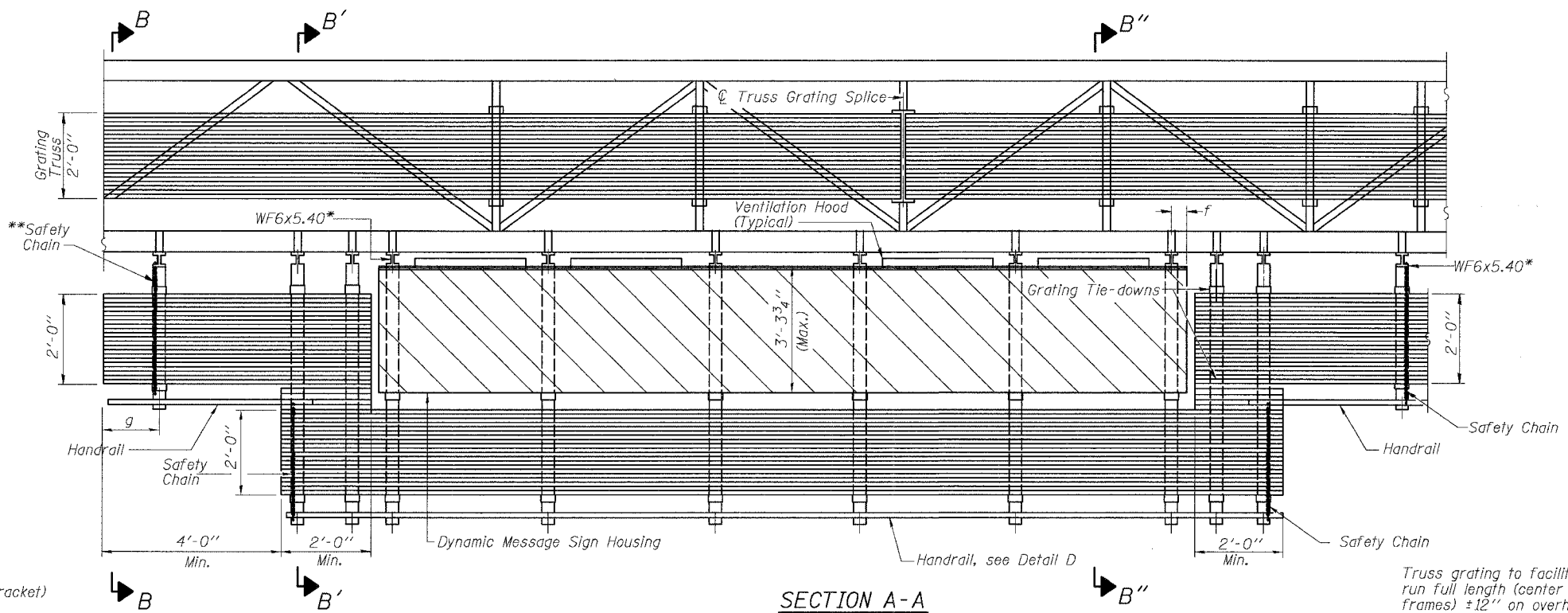
\* 62303 (2021-922 PT2 ETC 2324.6-IP) R-11



BRACKET TABLE

WF6x5.40 ASTM B308, Alloy 6061-T6	
Sign Width	Number Brackets Required
26'-1"	6

Walkway and Truss Grating width dimensions are nominal and may vary ±2" based on available standard widths.



Notes: \*Space WF6x5.40 brackets for efficiency and within limits shown:

f = 12" maximum, 4" minimum (End of sign to center of nearest bracket)

g = 12" maximum, 4" minimum (End of walkway grating to center of nearest support bracket)

h = 6'-0" maximum (center to center of walkway support brackets, WF6x5.40)

\*\*If walkway bracket at safety chain location is behind sign, add angle to bracket, see Alternate Safety Chain Attachment on Base Sheet OS-A-11-DMS2

For Details T and W, Section B-B and Grating Splice Details, see Base Sheet OS-A-10-DMS2.  
For Details D, F, G and P and Handrail Splice Details, see Base Sheet OS-A-11-DMS2.

Handrail and walkway shall span a minimum of three brackets between splices and/or gap joints.  
Place all sign and walkway brackets as close to panel points as practical.  
Grating and handrail splices placed as needed.

Truss grating to facilitate inspection shall run full length (center to center of support frames) ±12" on overhead trusses. Cost of truss grating is included in "Overhead Sign Structure"

SGN-28

OVERHEAD SIGN STRUCTURES  
ALTERNATE ALUMINUM WALKWAY DETAILS

ILLINOIS DEPARTMENT OF TRANSPORTATION  
F.A.I. 94/90 (DAN RYAN EXPRESSWAY)  
GARFIELD BLVD TO 31st STREET (SB LOCAL LANES)  
OVERHEAD SIGN STRUCTURES  
(SPAN)

DESIGNED	MSA
CHECKED	AS/AC
DRAWN	RV
CHECKED	MSA

EXAMINED	20
PASSED	ENGINEER OF STRUCTURAL SERVICES
	ENGINEER OF BRIDGES AND STRUCTURES

NUMBER	REVISION	DATE

Structure Number	Station	a	b	c	d	e	Walkway Grating and Handrail Lengths
ISO16I094R055.64	3586+50	4'-10 1/2"	12'-8 1/2"	34'-7"	12'-2 1/2"	22'-7 1/2"	59'-6"
ISO16I094R057.8	3475+92.44	4'-1 1/16"	4'-0"	30'-1"	4'-11 1/2"	6'-3 13/16"	39'-0 1/2"

OS-A-9-DMS2 7/1/2001

6/8/2006 12:25:35 PM