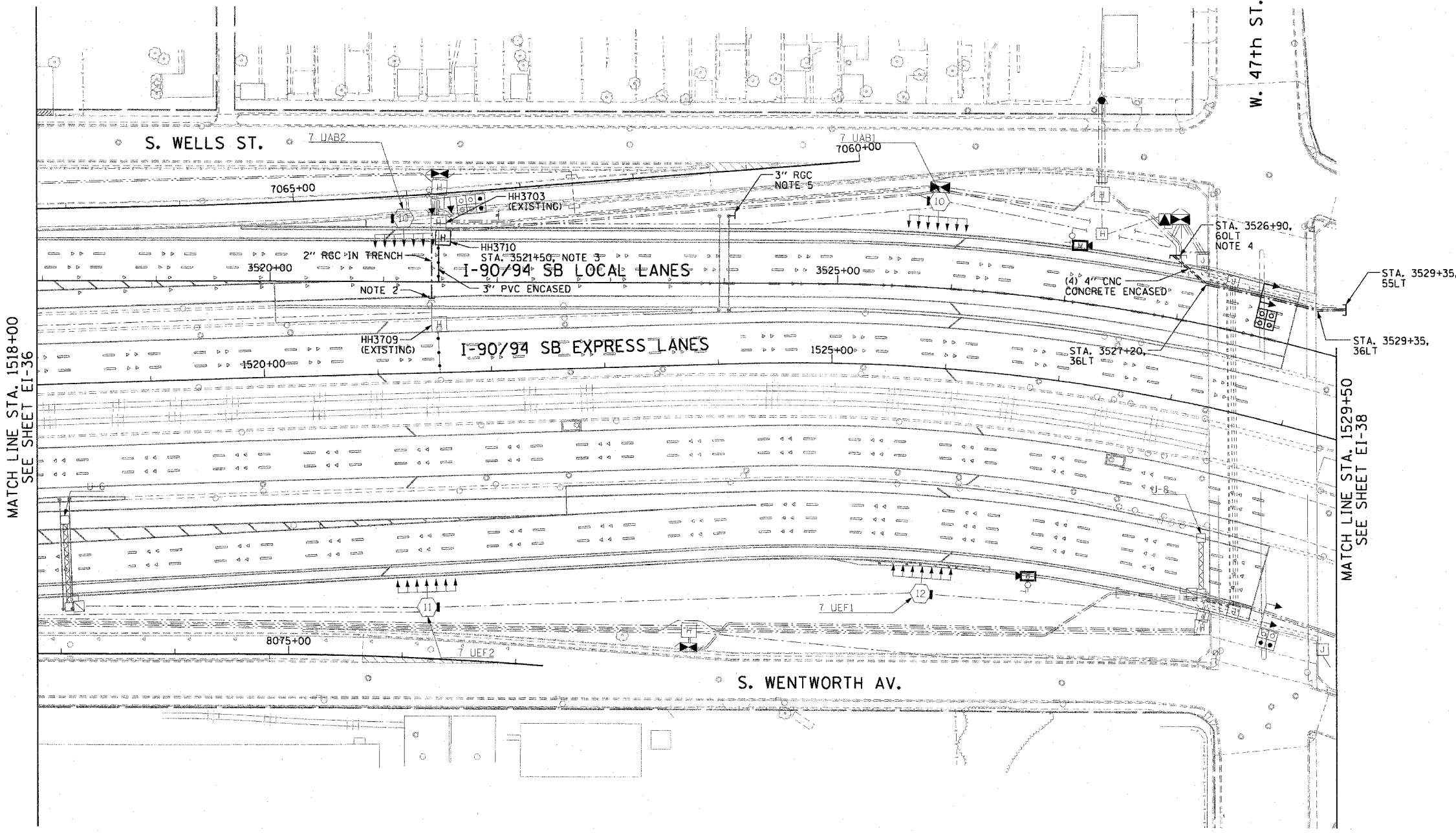


F.A.I. RTE.	SECTION	COUNTY	TOTAL SHEETS	SHEET NO.
90/94		COOK	588	322
STA. 1518+00.00 TO STA. 1529+50.00				
FED. ROAD DIST. NO. 1 ILLINOIS		FED. AID PROJECT		
62303		(2021-922 PT2 ETC 2324.6-1P) R-11		



NOTES:

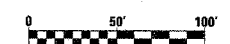
- SEE DRAWINGS EI-100 AND EI-101 FOR ELECTRICAL SYMBOLS AND ABBREVIATIONS.
- THE CONTRACTOR SHALL LOCATE THE EXISTING CONDUIT STUB-OUTS INSTALLED IN IDOT CONTRACT NO. 62302 AND CONNECT THE PROPOSED CONDUIT FROM HH3710.
- CONTRACTOR SHALL INSTALL HH3710 IN LOCAL LANE SHOULDER, PROVIDE A 3" RGC IN TRENCH FROM HH3710 TO HH3703. SEE DRAWINGS EI-102, EI-103 AND EI-104 FOR TYPICAL HANDHOLE INSTALLATION DETAILS.
- SEE DRAWING EI-107 FOR TYPICAL INSTALLATION DETAILS OF DUCTBANK AT AN EXISTING BRIDGE ABUTMENT. DUCTBANK SHALL BE TERMINATED AT THE STATIONS AND OFFSETS SHOWN APPROXIMATELY 30" BELOW FINISHED GRADE.
- EXTEND CONDUIT STUB-OUT 2' BEYOND THE SIGN STRUCTURE FOUNDATION. CAP FOR FUTURE USE.
- UNLESS NOTED OTHERWISE, ALL ITEMS AND WORK SHOWN IN HEAVY LINE WEIGHT ON THIS DRAWING ARE PROPOSED NEW ITEMS AND WORK.



MATCH LINE STA. 1518+00
SEE SHEET EI-36

MATCH LINE STA. 1529+50
SEE SHEET EI-38

CTE | AECOM



EI-37

REVISIONS	
NAME	DATE

ILLINOIS DEPARTMENT OF TRANSPORTATION
F.A.I. 90/94 (DAN RYAN EXPRESSWAY)
GARFIELD BLVD TO 31ST STREET (SB LOCAL LANES)

ELECTRICAL INFRASTRUCTURE PLAN

SCALE: 1"=50'
DATE: June 9, 2006
DRAWN BY: HAR
CHECKED BY: JPC

06/07/2006 09:58:43 AM