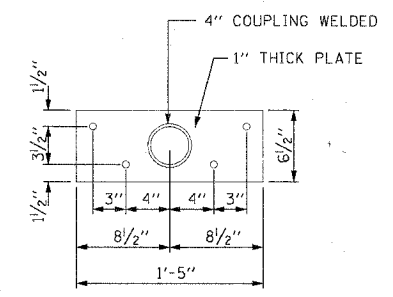
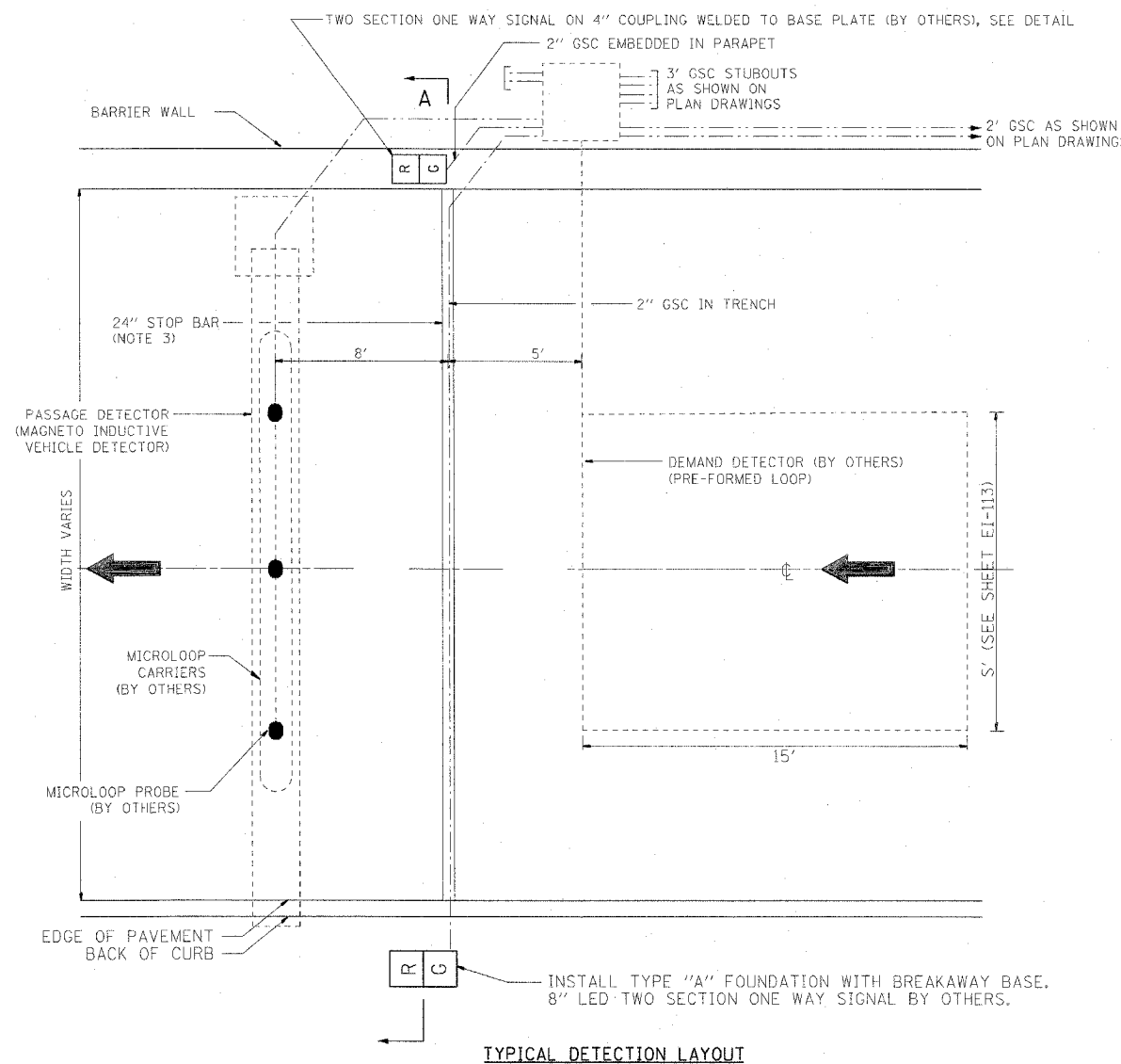
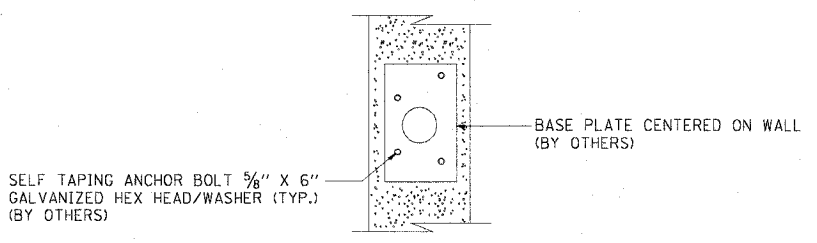


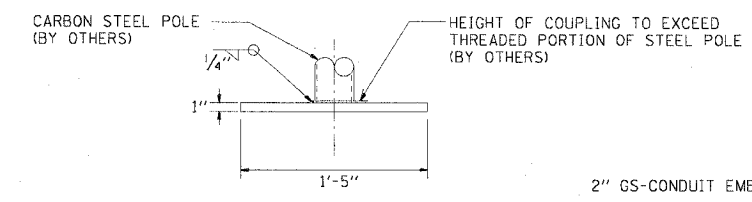
F.A.I. RTE.	SECTION	COUNTY	TOTAL SHEETS	SHEET NO.
90/94		COOK	588	348
STA.	TO STA.			
FED. ROAD DIST. NO. 1 ILLINOIS		FED. AID PROJECT		
62303		(2021-922 PT2 ETC 2324.6-1P) R-11		



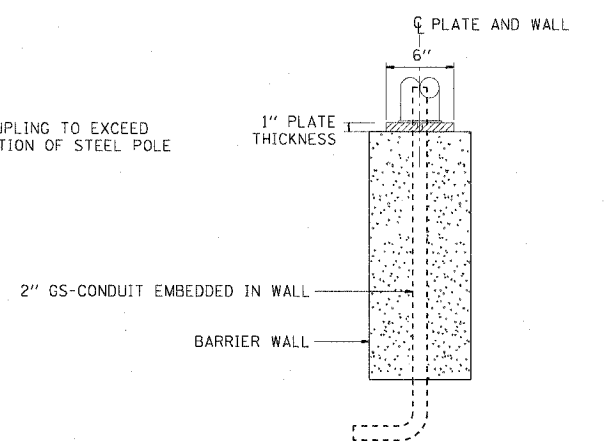
TOP VIEW
(BASE PLATE)



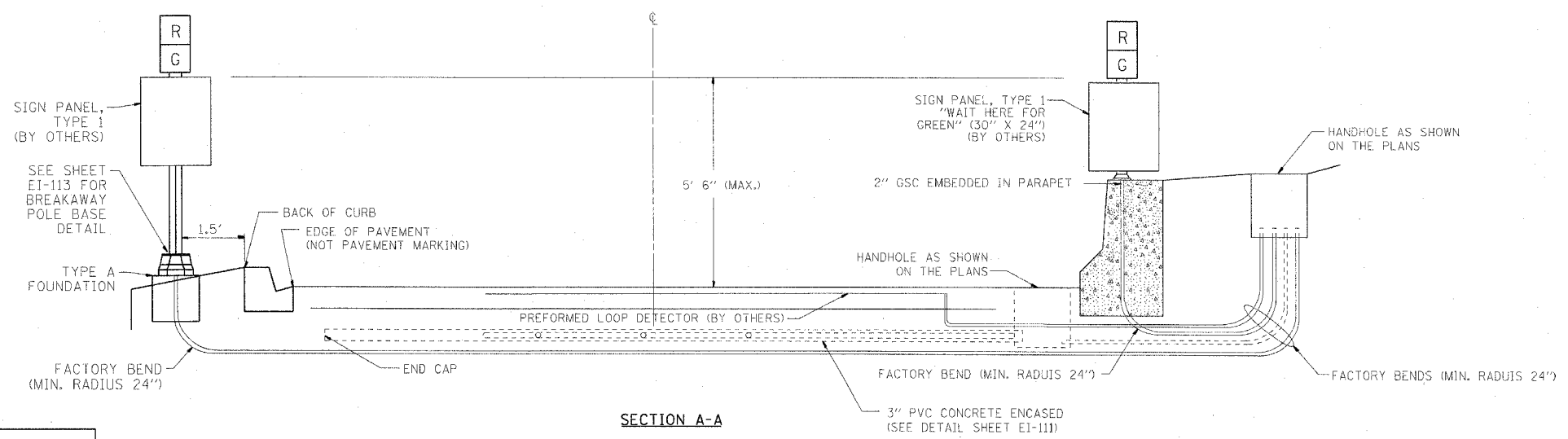
TOP VIEW
(BASE PLATE ON WALL)



SIDE VIEW
(BASE PLATE)



FRONT VIEW
(BASE PLATE ON WALL)



SECTION A-A

NOTES:

- CONDUIT AND HANDHOLES SHALL BE FURNISHED AND INSTALLED UNDER THIS CONTRACT. ALL CABLES, PROBES, SIGNALS, SIGNS, AND OTHER EQUIPMENT WILL BE FURNISHED AND INSTALLED BY OTHERS UNDER CONTRACT NUMBER 62583.
- CONDUIT MUST BE STUBBED OUT OF CONCRETE A MINIMUM OF 3".
- CENTERLINE OF STOP BAR AND TRAFFIC SIGNALS SHALL BE LOCATED AT THE STATION SHOWN ON THE PLANS.
- CONTRACTOR MUST COORDINATE PLACEMENT AND SIZE OF ANCHOR BOLTS WITH IDOT CONTRACT NUMBER 62583.

REVISIONS	
NAME	DATE

ILLINOIS DEPARTMENT OF TRANSPORTATION
F.A.I. 90/94 (DAN RYAN EXPRESSWAY)
GARFIELD BLVD TO 31ST STREET (SB LOCAL LANES)
TYPICAL RAMP METERING INSTALLATION
FOR RAMP WITH BARRIER WALL (RIGHT SIDE)
AND CURB AND GUTTER (LEFT SIDE)

SCALE: NOT TO SCALE
DATE: June 9, 2006
DRAWN BY: HAR
CHECKED BY: JPC