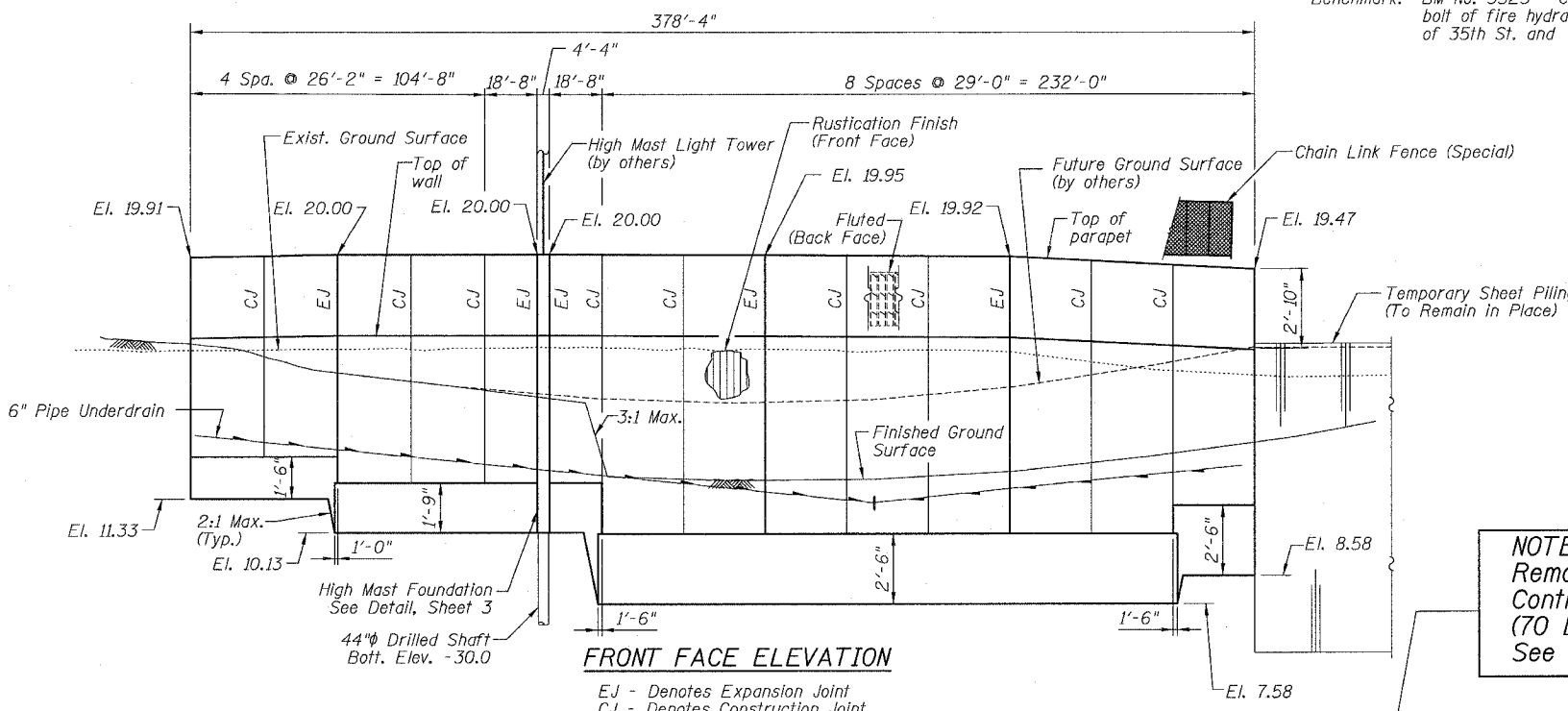
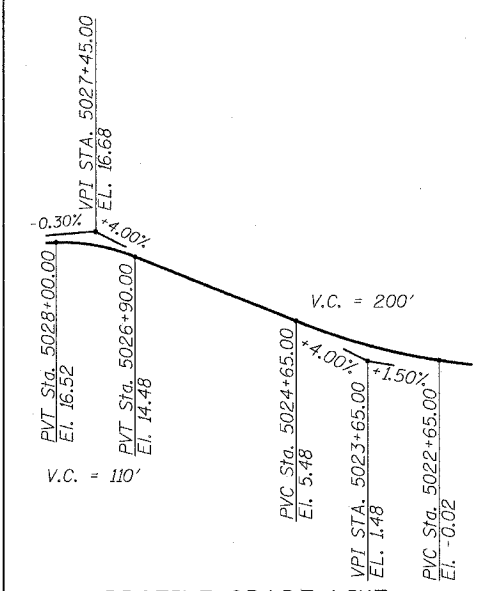


Existing Structure: The existing wall was built in 1962 as part of Section S-2324.6-1P and designated Wall "D". It consists of cast-in-place cantilever wall carried by a grade beam supported on drilled shafts. The exist. wall is 480'-0" long, has a 3/8" front face batter and has 30" high chain link fence on top.

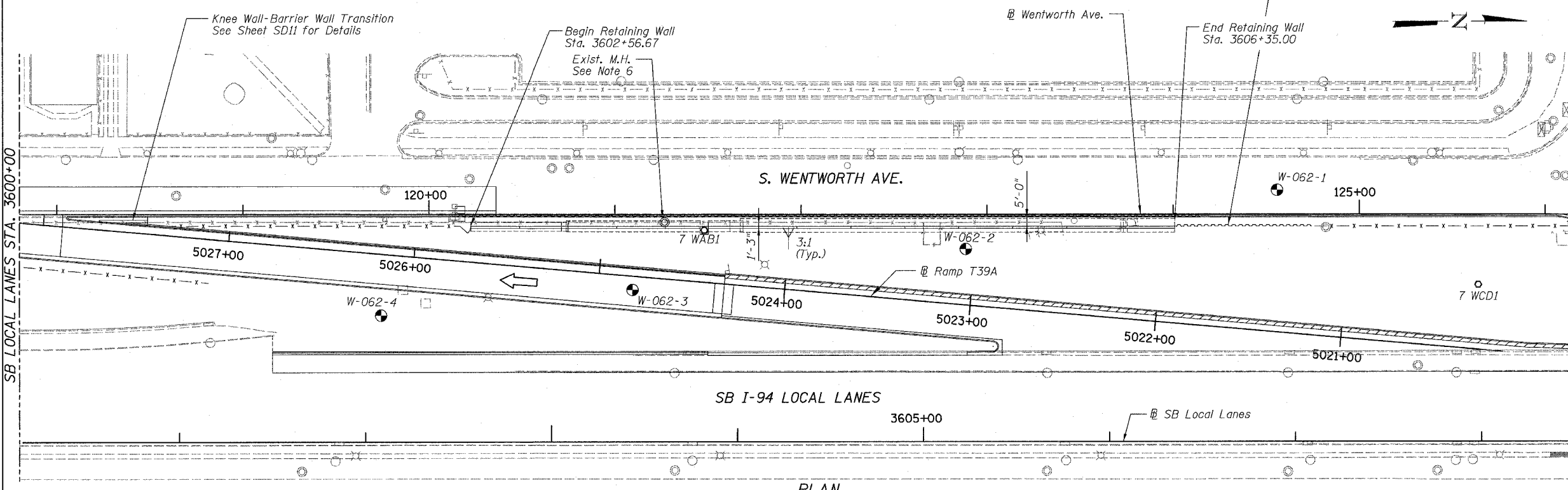
All elevations are based on the Chicago City Datum (C.C.D.)

Benchmark: BM No. 3525 Cross cut on Northwest flange bolt of fire hydrant at the Northwest corner of 35th St. and Wentworth Ave. El. 16.93.

| | | | | |
|---------------------|---------|------------------------------------|--------------|-----------|
| F.A.I. | SECTION | COUNTY | TOTAL SHEETS | SHEET NO. |
| 94/90 | * | COOK | 588 | 377 |
| STA. | | TO STA. | | |
| FED. ROAD DIST. NO. | | ILLINOIS FED. AID PROJECT | | |
| 62303 | | *I2021-922 PT2 ETC 2324.6-1P1 R-11 | | |

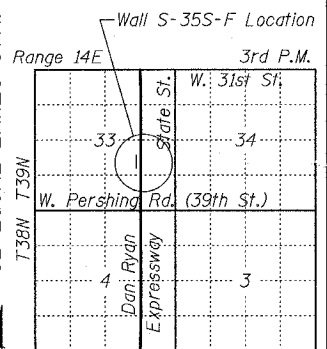


NOTE A:
Remove Sheet Piling installed by Contract 62585, approx. 980 Sq. Ft. (70 Lin. Ft., 14 Ft. Lg., CZ95 Piling) See Roadway Plans



LEGEND

- Soil Boring Location
- WAB - High Mast Lighting Foundation and Tower (See Notes)
- Removal of Exist. Structures
- Sheet Piling



BOWMAN, BARRETT & ASSOCIATES INC.
CONSULTING ENGINEERS
Chicago, Illinois
312.228.0100
www.bbainc.com

FOR INFORMATION ONLY
EXCEPT NOTE A

DESIGN SPECIFICATIONS

2002 AASHTO
2001 AASHTO Std. Specs. for Structural Supports for Highway Signs, Luminaires and Traffic Signals.

DESIGN STRESSES

FIELD UNITS
f'c = 3,500 psi
fy = 60,000 psi (Reinforcement)

LOADING

Equivalent Fluid Pressure = 40 pcf (Drained Condition)
Traffic Surcharge = 250 psf

| REVISIONS | |
|-----------|----------|
| NAME | DATE |
| REVISOR | 06/23/06 |
| | |
| | |
| | |
| | |

ILLINOIS DEPARTMENT OF TRANSPORTATION
F.A.I. 94/90 (DAN RYAN EXPRESSWAY)
GARFIELD BLVD TO 31ST STREET (SB LOCAL LANES)

RETAINING WALL S-35S-F

SCALE: NTS
DATE: JUNE 9, 2006
DRAWN BY: SRB
CHECKED BY: BLU

RDT 23

6/27/2006 2:44:37 PM