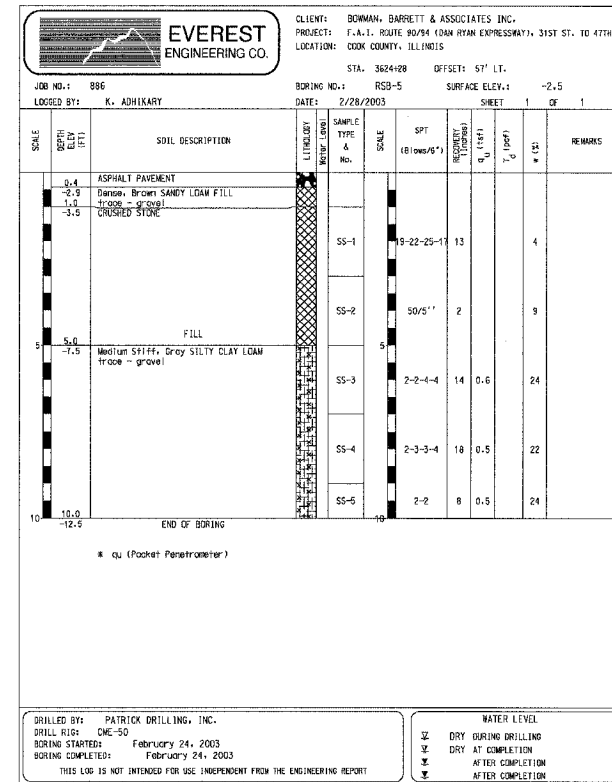
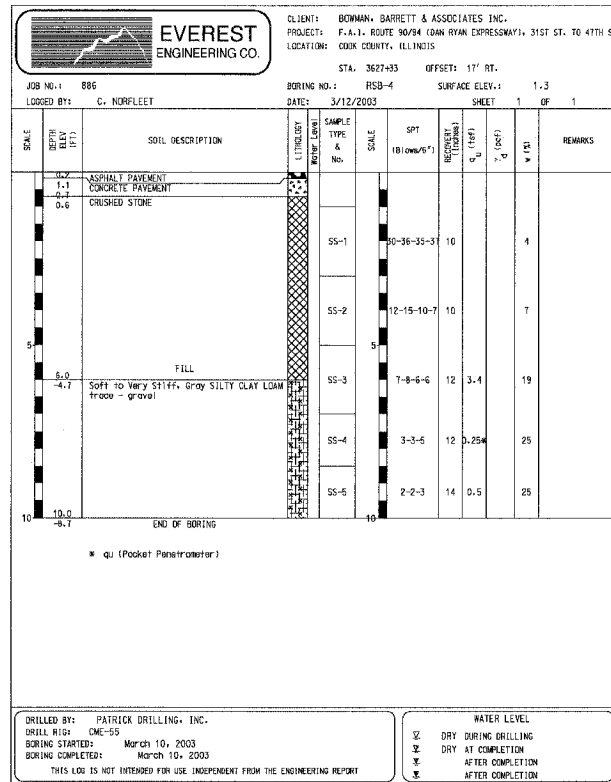
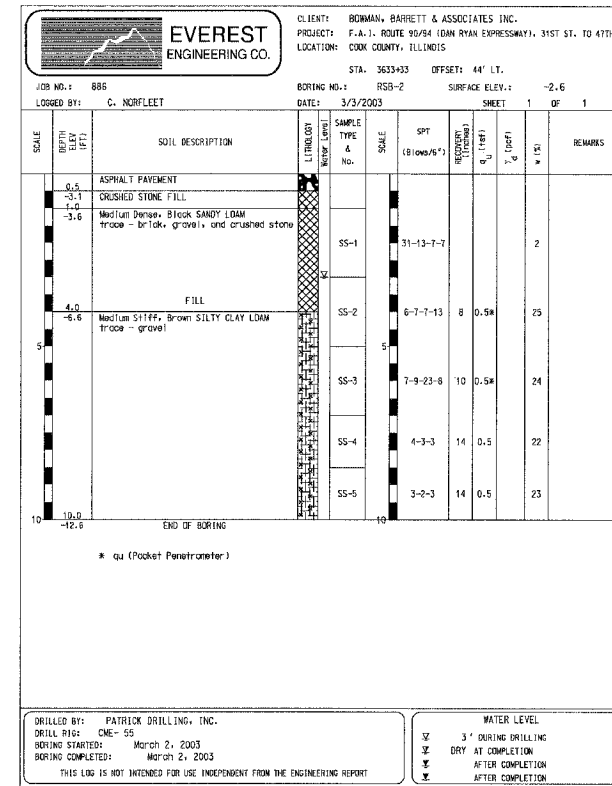
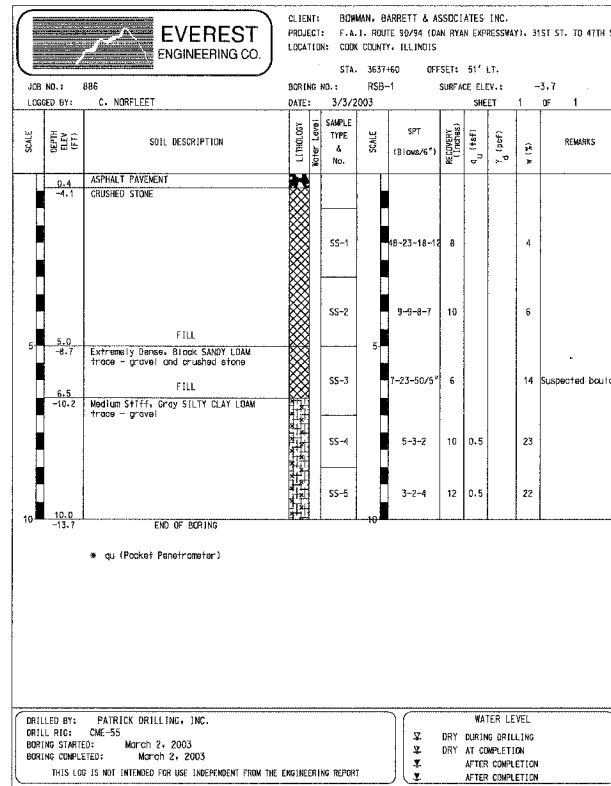
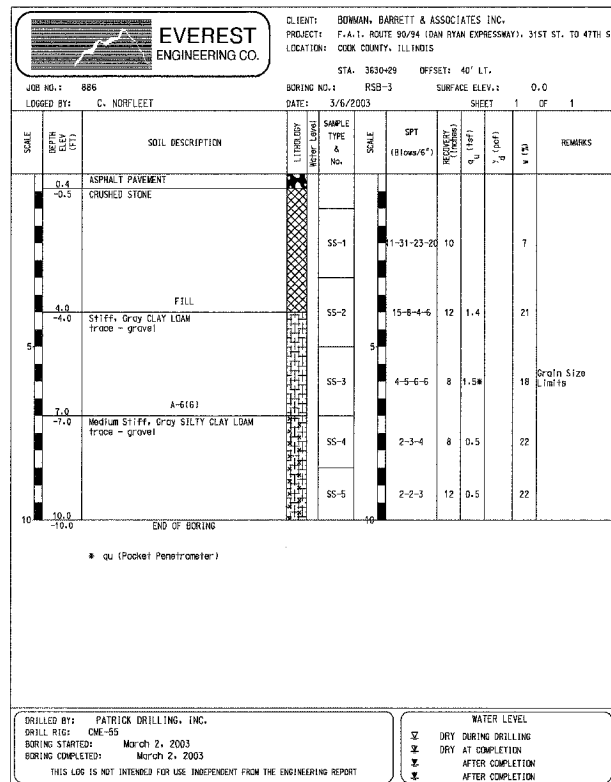


TOP-OF-ROCK ELEVATIONS ENCOUNTERED DURING CONSTRUCTION OF CONTRACTS 62300 & 62301

NORTHBOUND		
STATION	OFFSET	ELEVATION
2530+00	SEE NOTE 3	-22.9
2529+60	SEE NOTE 3	-24.7
2528+00	SEE NOTE 3	-12.0
2527+50	SEE NOTE 3	-16.7
2527+00	SEE NOTE 3	-16.4
2526+50	SEE NOTE 3	-15.6
2526+00	SEE NOTE 3	-15.4
2525+50	SEE NOTE 3	-12.9
2525+00	SEE NOTE 3	-12.3
2524+50	SEE NOTE 3	-12.4
2568+40	SEE NOTE 3	-7.2
2569+25	SEE NOTE 3	-6.5
2569+90	SEE NOTE 3	-5.4
2570+50	SEE NOTE 3	-5.0
2571+00	SEE NOTE 3	-18.2
2571+70	SEE NOTE 3	-19.2

SOUTHBOUND		
STATION	OFFSET	ELEVATION
1530+00	SEE NOTE 3	-23.5
1528+00	SEE NOTE 3	-11.2
1527+00	SEE NOTE 3	-11.2
1526+70	SEE NOTE 3	-14.8
1525+40	SEE NOTE 3	-10.3
1524+50	SEE NOTE 3	-7.9
1523+95	SEE NOTE 3	-6.8
1560+97	SEE NOTE 4	-16.3
1563+21	SEE NOTE 4	-12.5
1565+05	SEE NOTE 4	-9.0
1568+70	SEE NOTE 3	-6.8
1569+40	SEE NOTE 3	-5.8
1570+60	SEE NOTE 3	-7.4
1571+20	SEE NOTE 3	-17.5
1571+70	SEE NOTE 3	-17.5



F.A.I.	SECTION	COUNTY	TOTAL SHEETS	SHEET NO.
94/90	*	COOK	588	385
STA.	TO STA.			
FED. ROAD DIST. NO.	ILLINOIS	FED. AID PROJECT		
62303 • (2021-922 PT2 ETC 2324.6-1P) R-11				

- NOTES:
- BEDROCK WAS ENCOUNTERED AT THE ABOVE LOCATIONS DURING CONSTRUCTION OF CONTRACTS 62300 AND 62301.
  - BEDROCK ELEVATIONS ARE ESTIMATED BASED ON BORING PERFORMED BY CONTRACT 62300 AND 62301.
  - BORING LOCATED IN EXPRESS LANE SHOULDER ADJACENT TO CTA.
  - BORINGS LOCATED IN WESTERN SHOULDER OF SB EXPRESS LANES.

BOWMAN, BARRETT & ASSOCIATES INC.  
CONSULTING ENGINEERS  
Chicago, Illinois  
312.228.0100  
www.bbainc.com

REVISIONS	
NAME	DATE

ILLINOIS DEPARTMENT OF TRANSPORTATION  
F.A.I. 94/90 (DAN RYAN EXPRESSWAY)  
GARFIELD BLVD TO 31ST STREET (SB LOCAL LANES)  
SOIL BORING LOGS

SCALE: 1"=50'  
DATE: 06/09/06

DRAWN BY: LAM  
CHECKED BY: BLU

BL-01  
4/8/2006