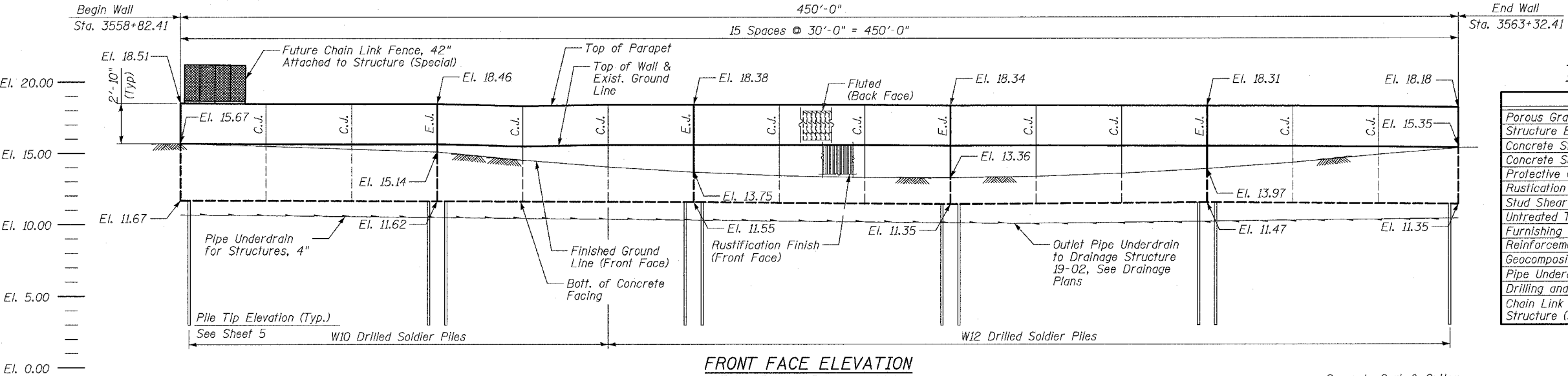


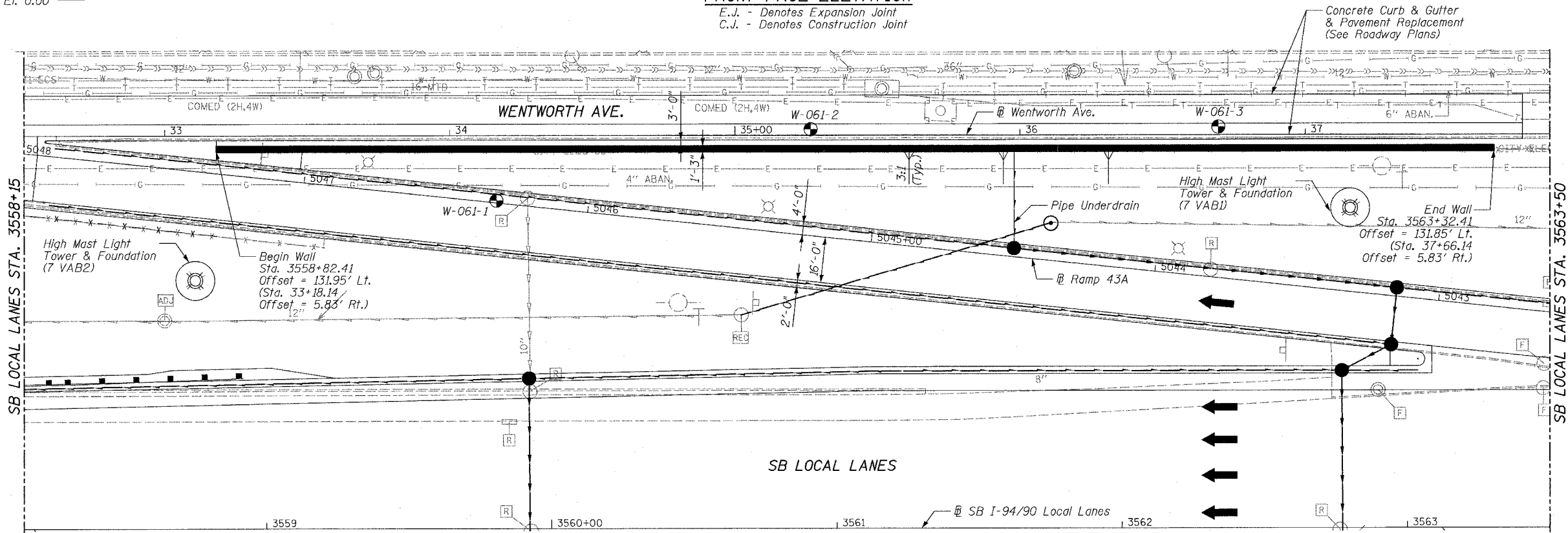
Benchmark: BM No. 3527
 "X" Cut on Northerly flange bolt of
 fire hydrant at the NW corner of
 Root St. and Wentworth Ave.
 El. 15.63

All elevations are based on the Chicago City Datum (C.C.D.)



FRONT FACE ELEVATION

E.J. - Denotes Expansion Joint
 C.J. - Denotes Construction Joint



PLAN

LEGEND

- Soil Boring Location
- Proposed Drainage Structure
- High Mast Lighting Foundation and Tower (See Notes)
- Proposed Underdrain
- Proposed Storm Sewer

DESIGN SPECIFICATIONS

2002 AASHTO

DESIGN STRESSES

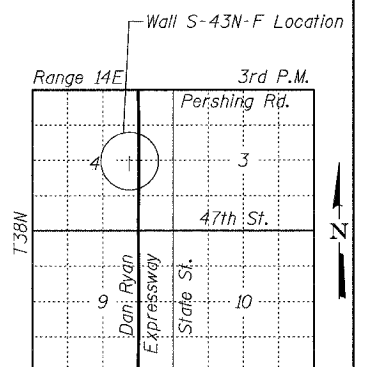
FIELD UNITS

$f'_c = 3,500$ psi
 $f_y = 60,000$ psi (Reinforcement)
 $f_y = 36,000$ psi (M270 Gr 36) Soldier Piles

F.A.I.	SECTION	COUNTY	TOTAL SHEETS	SHEET NO.
94/90		COOK	588	436
STA.	TO STA.			
FED. ROAD DIST. NO.	ILLINOIS FED. AID PROJECT			
62303	*(2021-922 PT2 ETC 2324.6-1P) R-11			

TOTAL BILL OF MATERIAL

Item	Unit	Quantity
Porous Granular Embankment (Special)	Cu. Yd.	1
Structure Excavation	Cu. Yd.	129
Concrete Structures	Cu. Yd.	73.3
Concrete Superstructure	Cu. Yd.	57.2
Protective Coat	Sq. Yd.	281
Rustication Finish	Sq. Ft.	1,803
Stud Shear Connectors	Each	360
Untreated Timber Lagging	Sq. Ft.	1,363
Furnishing Soldier Piles (W Section)	Foot	1,254
Reinforcement Bars, Epoxy Coated	Pound	17,400
Geocomposite Wall Drain	Sq. Yd.	112
Pipe Underdrains for Structures 4"	Foot	455
Drilling and Setting Soldier Piles (In Soil)	Cu. Ft.	4,139
Chain Link Fence, 42" Attached to Structure (Special)	Foot	449



LOCATION SKETCH

SHEET 1 OF 9

ILLINOIS DEPARTMENT OF TRANSPORTATION
 F.A.I. 94/90 (DAN RYAN EXPRESSWAY)
 GARFIELD BLVD TO 31ST STREET (SB LOCAL LANES)

RETAINING WALL S-43N-F
 GENERAL PLAN AND ELEVATION

SCALE: NTS
 DATE: JUNE 9, 2006

DRAWN BY: LAM
 CHECKED BY: BLU

BOWMAN, BARRETT & ASSOCIATES INC.
 CONSULTING ENGINEERS
 Chicago, Illinois
 312.228.0100
 www.bbandainc.com

Notes:

1. Offsets given to Front Face of Wall. Station and offsets in parentheses are along Frontage Road or ramp.
2. HMLT, foundations and work pads by others. See Special Provisions for Contractor Cooperation.
3. Min. Facing in contact with soldier pile shall be 3'-0".
4. Coordinate pipe underdrain outlet with Drainage Contractor.

12.25.956 PM 6/23/2006