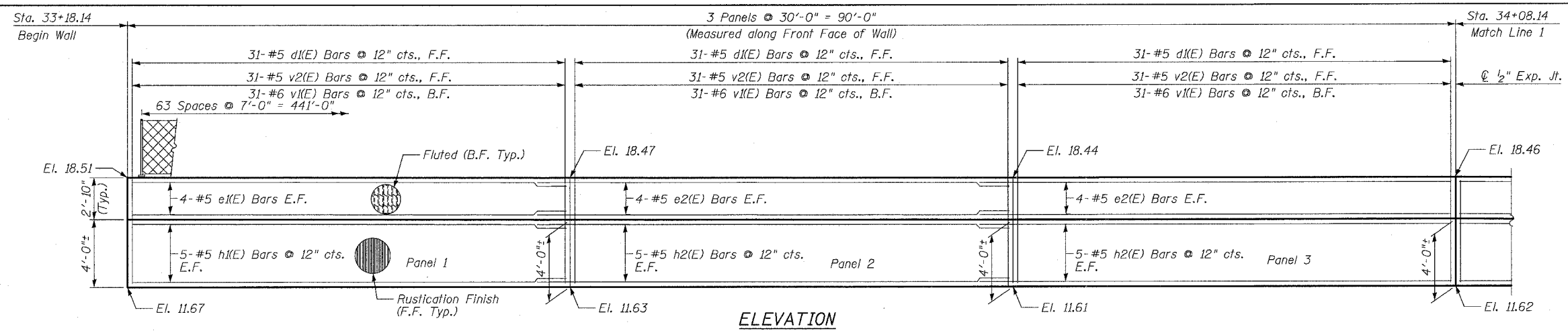


F.A.I.	SECTION	COUNTY	TOTAL SHEET NO.
94/90	*	COOK	588 437
STA.	TO STA.		
FED. ROAD DIST. NO.	ILLINOIS	FED. AID PROJECT	
62303	*2021-922 PT2 ETC 2324.6-1P1	R-11	

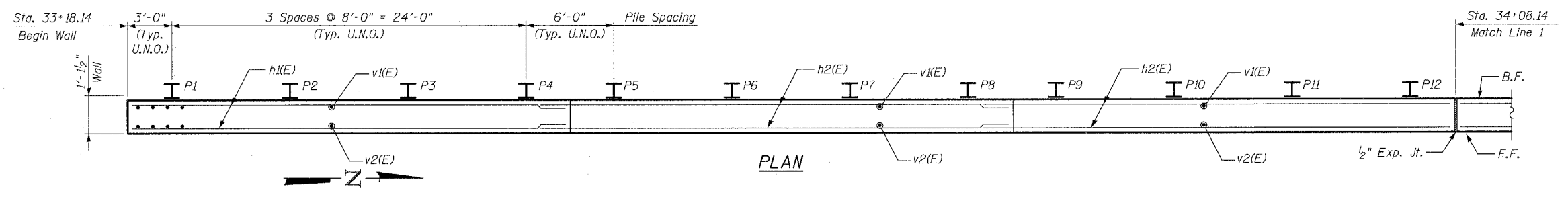
- NOTES:**
1. Stationing given is @ S. Wentworth Ave. stationing.
  2. Facing in Plan Views is scaled 1:2 on an X:Y scale to show reinforcement.
  3. See details for reinforcing bar clearances.

F.F. - denotes Front Face  
 B.F. - denotes Back Face  
 E.F. - denotes Each Face

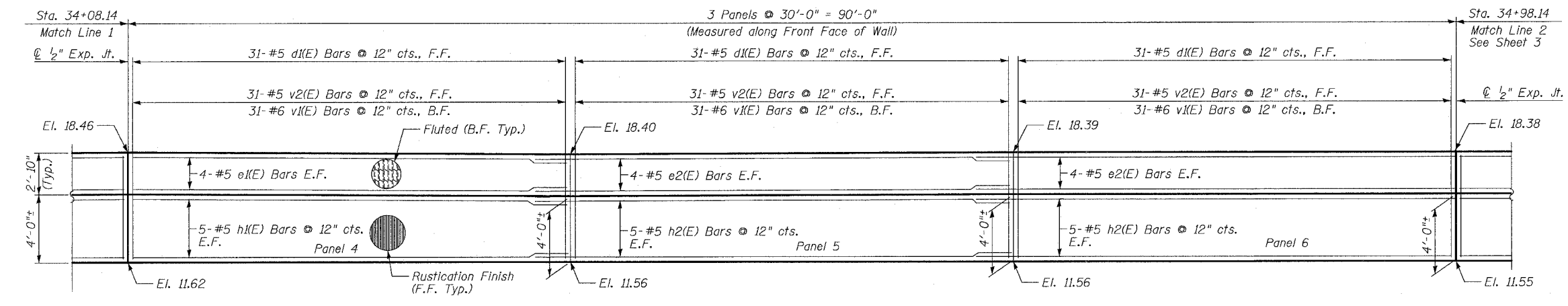
**MIN BAR LAP**  
 #5 - 2'-2"  
 #6 - 2'-7"



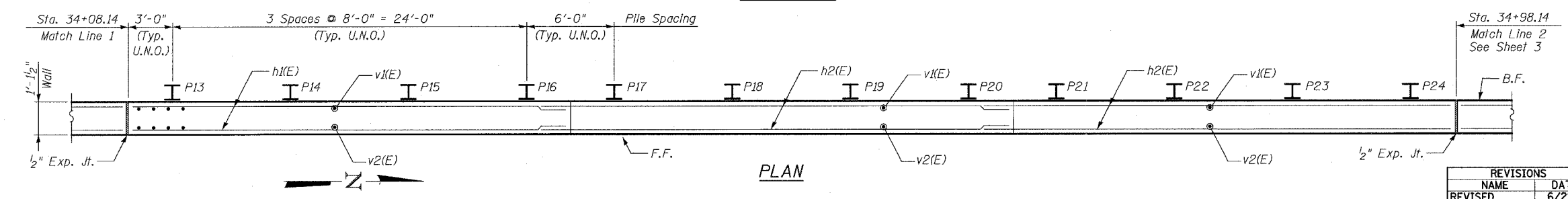
**ELEVATION**



**PLAN**



**ELEVATION**



**PLAN**

SHEET 2 OF 9

REVISIONS	
NAME	DATE
REVISED	6/21/06

ILLINOIS DEPARTMENT OF TRANSPORTATION  
 F.A.I. 94/90 (DAN RYAN EXPRESSWAY)  
 GARFIELD BLVD TO 31ST STREET (SB LOCAL LANES)  
**RETAINING WALL S-43N-F**  
**WALL DETAILS 1**  
 SCALE: NTS  
 DATE: JUNE 9, 2006  
 DRAWN BY: KMW  
 CHECKED BY: BLU

BOWMAN, BARRETT & ASSOCIATES INC.  
 CONSULTING ENGINEERS  
 Chicago, Illinois  
 312.228.0100  
 www.bbandainc.com

11/20/06 12:40:38 PM 6/23/2006