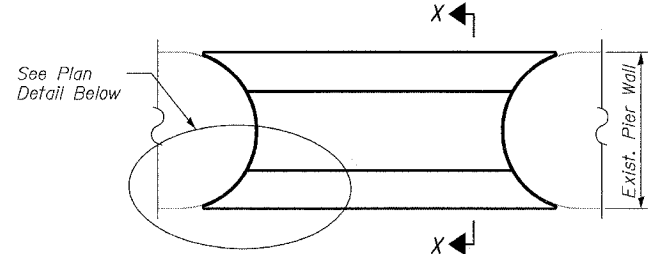
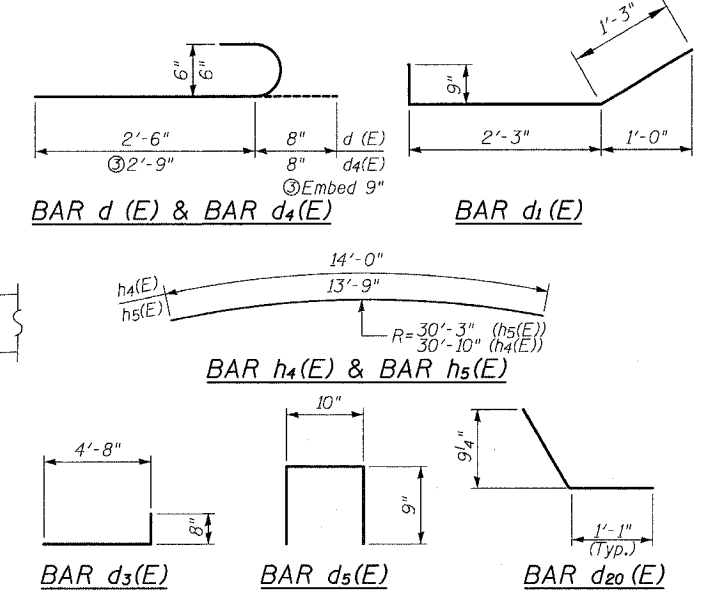


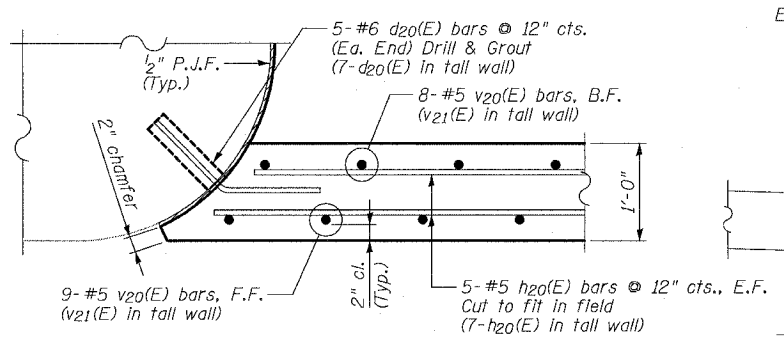
BILL OF BARS

Bar	No.	Size	Length	Shape
d (E)	307	#6	3'-2"	
d1 (E)	338	#6	4'-3"	
d2 (E)	470	#5	4'-8"	
d3 (E)	127	#6	5'-4"	
d4 (E)	450	#6	3'-5"	
d5 (E)	28	#5	2'-4"	
h (E)	112	#5	24'-8"	
h1 (E)	112	#5	27'-2"	
h2 (E)	14	#5	10'-10"	
h3 (E)	14	#5	13'-0"	
h4 (E)	7	#5	14'-0"	
h5 (E)	7	#5	13'-9"	
d20 (E)	24	#6	2'-2"	
h20 (E)	24	#5	8'-0"	
v20 (E)	17	#5	3'-8"	
v21 (E)	17	#5	5'-3"	

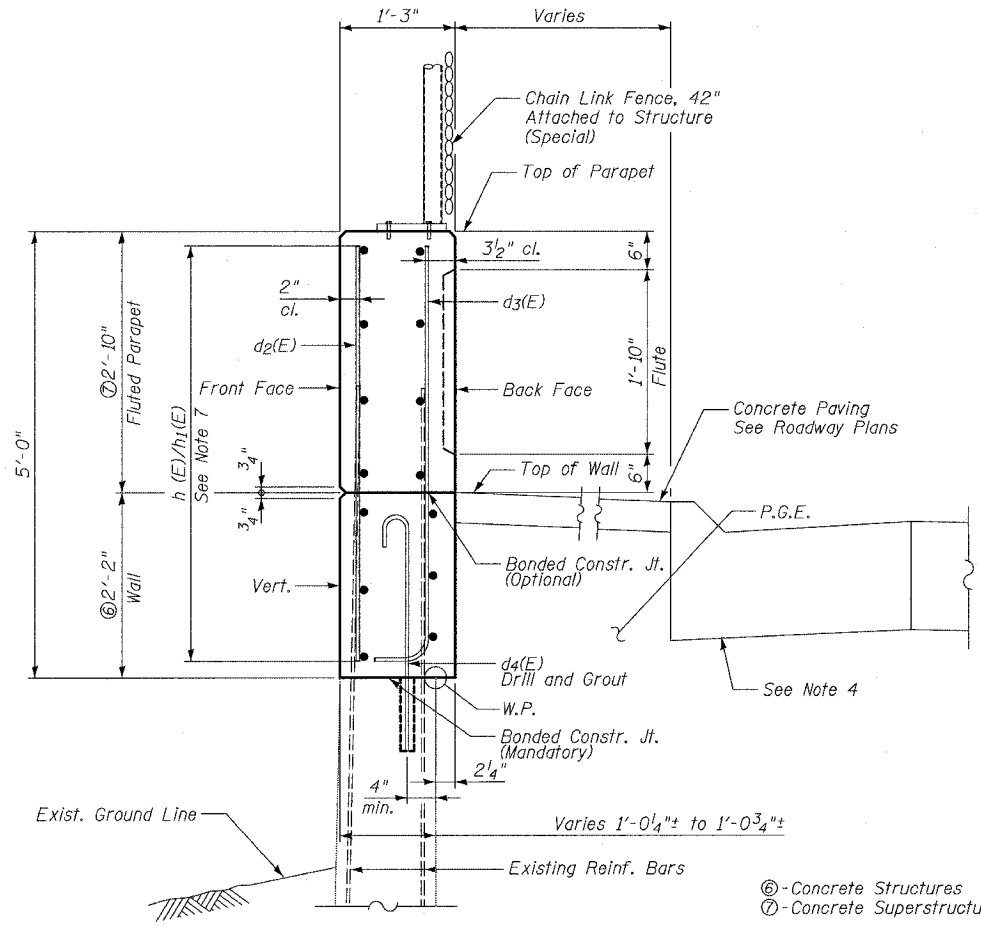
BAR BEND DETAILS



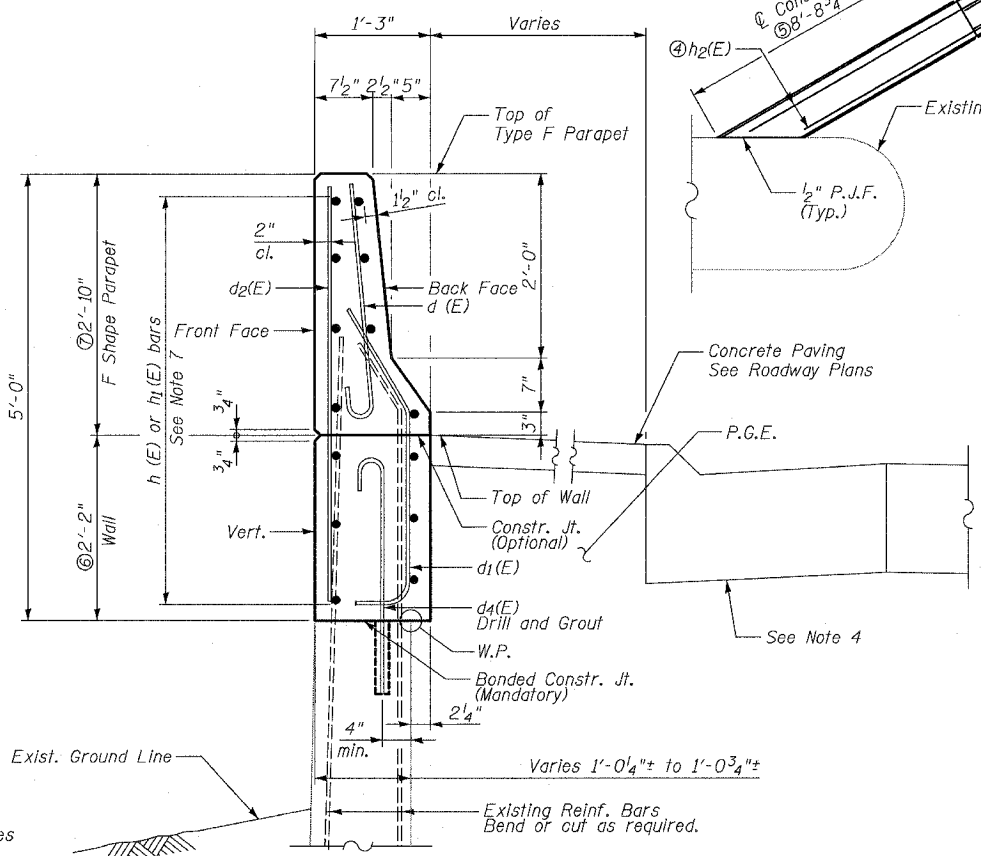
DETAIL A



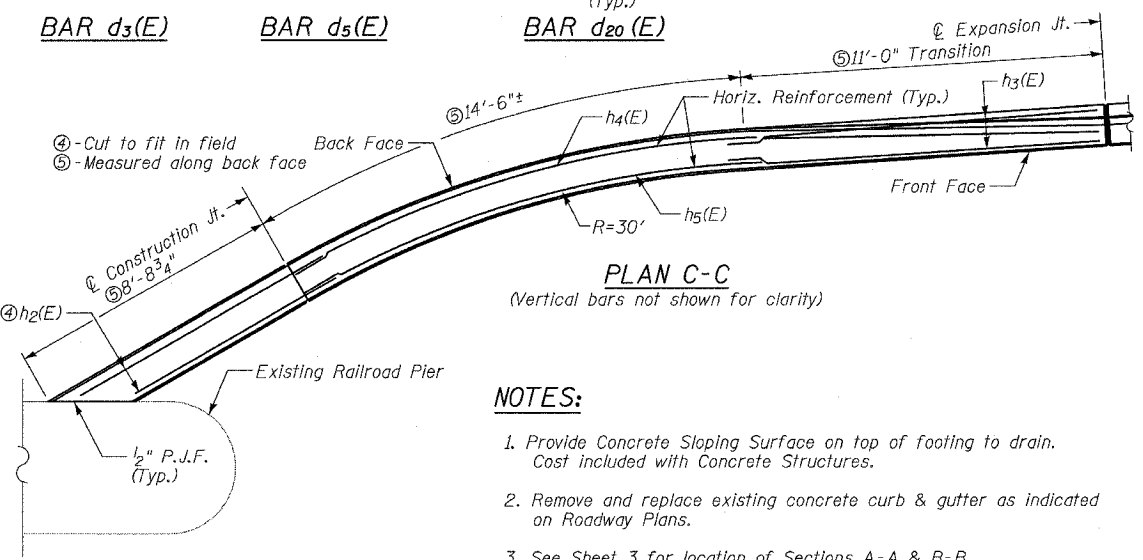
SECTION X-X



SECTION A-A



SECTION B-B



PLAN C-C

NOTES:

1. Provide Concrete Sloping Surface on top of footing to drain. Cost included with Concrete Structures.
2. Remove and replace existing concrete curb & gutter as indicated on Roadway Plans.
3. See Sheet 3 for location of Sections A-A & B-B.
4. Exist. vertical reinforcement incorporated into new construction, exist. horizontal bars removed. Bend vertical bars as required to maintain specified clear cover.
5. Tie horizontal bars to existing or proposed vertical bars as required to maintain clear cover shown.
6. Reinforcement bars designated (E) shall be epoxy coated.
7. Backfill for Structure Excavation limits shall be measured and paid for as Porous Granular Embankment.
8. See sheet SD2 & SD2A for fluted parapet and chain link fence details.
9. Cost of P.J.F. included with Concrete Structures.
10. Epoxy grout #6 d (E), d1(E) & d20(E) bars in 9" min. drilled holes in accordance with Art. 584 of the Std. Specs.

REVISIONS

NAME	DATE
REVISION	6/23/06
REVISION	7/11/06

ILLINOIS DEPARTMENT OF TRANSPORTATION
 F.A.I. 94/90 (DAN RYAN EXPRESSWAY)
 GARFIELD BLVD TO 31ST STREET (SB LOCAL LANES)

**RETAINING WALL S-39S-R
 WALL DETAILS 2**

SCALE: NTS
 DATE: JUNE 9, 2006
 DRAWN BY: PAH
 CHECKED BY: BLU

BOWMAN, BARRETT & ASSOCIATES INC.
 CONSULTING ENGINEERS
 Chicago, Illinois
 312.228.0100
 www.bbandainc.com

11/18/2006 12:57:47 PM \\11660\card\dwg\IN\PIRET WALL\660\JOB\WRS\395R_01.dwg