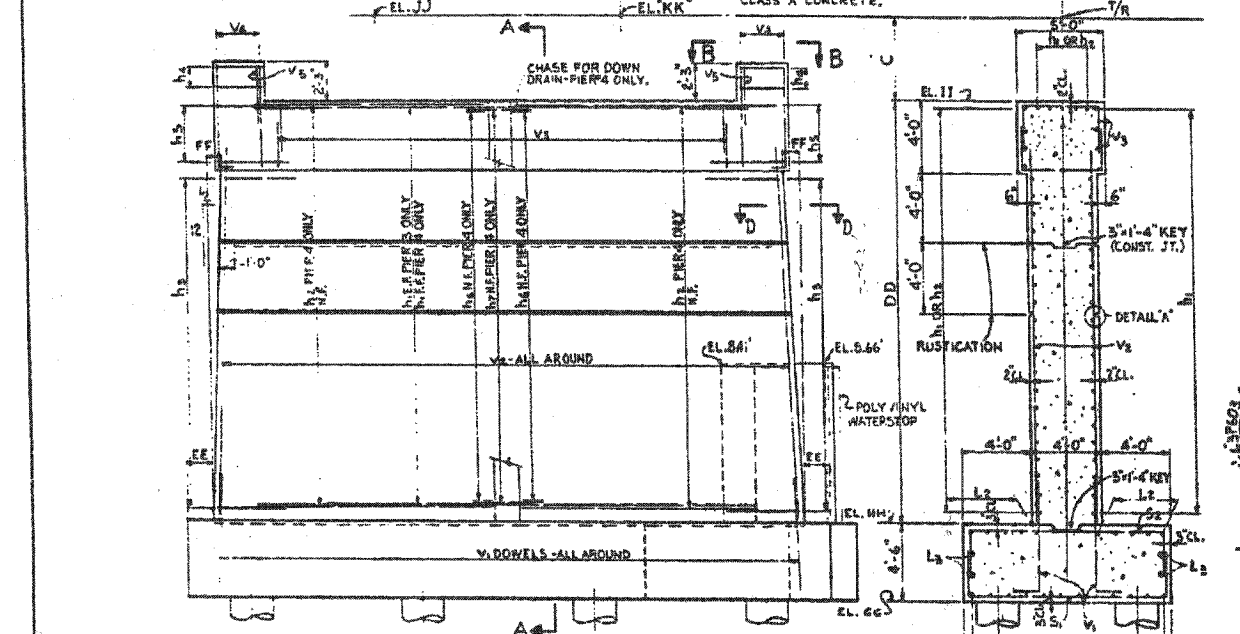
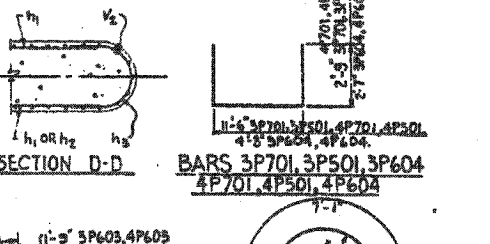


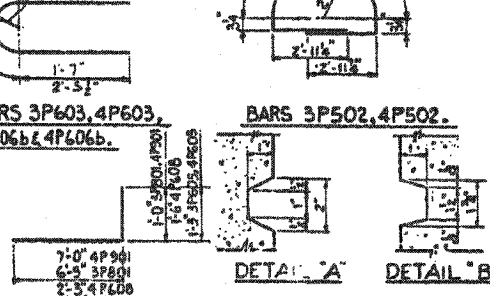
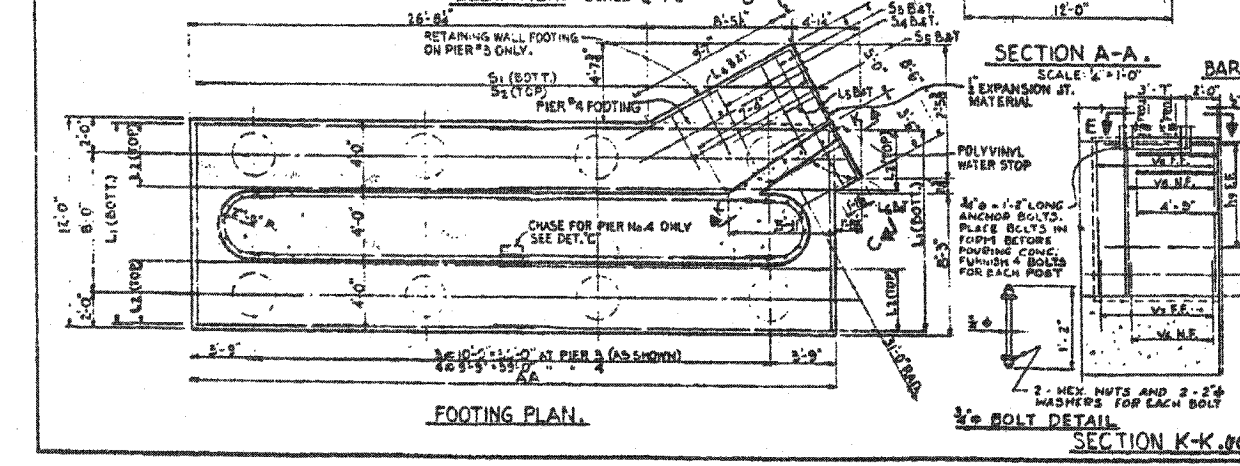
BAND	BARS IN EACH BAND				TOTAL	LENGTH	SHAPE	WEIGHT
	No.	SIZE	SPACING	MARK & LOCATION				
S ₁	75	7	6"	3P701 1-BOT.	75	17'-0"	L	21.96
S ₂	36	5	12"	3P501 1-TOP	36	17'-0"	L	8.74
L ₁	12	9	12"	3P501 2-BOT. LAP	24	24'-6"	L	16.12
L ₂	5	9	12"	3P501 4-TOP LAP	20	24'-6"	L	15.60
L ₃	2	6	12"	3P601 4-SIDES LAP	8	18'-6"	L	7.34



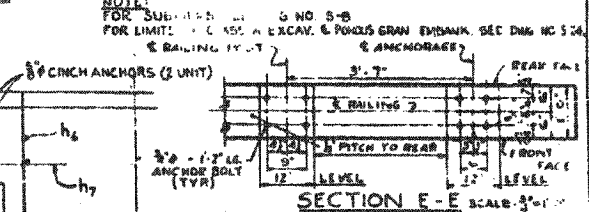
PIER No.	PIER DIMENSIONS									PIER ELEVATIONS											
	AA	DD	C	EE	FF	GG	HH	II	JJ	KK	AA	DD	C	EE	FF	GG	HH	II	JJ	KK	
3	37'-6"	23'-6"	12'-5 1/2"	1'-4 1/2"	0'-9 1/2"	-5'-08"	-0'-58"	-2'-92"	-35'-34"	-35'-34"	4	46'-4"	23'-9"	12'-5 1/2"	1'-4 1/2"	0'-9 1/2"	-5'-08"	-0'-58"	-2'-92"	-35'-43"	-35'-43"



BAND	BARS IN EACH BAND				TOTAL	LENGTH	SHAPE	WEIGHT
	No.	SIZE	SPACING	MARK & LOCATION				
S ₁	99	7	6"	4P701 1-BOT.	99	17'-0"	L	32.51
S ₂	47	5	12"	4P501 1-TOP	47	17'-0"	L	16.31
L ₁	12	9	12"	4P902 2-BOT. LAP	24	24'-6"	L	22.00
L ₂	5	9	12"	4P902 4-TOP LAP	20	24'-6"	L	16.66
L ₃	2	6	12"	4P607 4-SIDES LAP	8	24'-6"	L	7.88



ITEM	UNIT	PIER #3	PIER #4	TOTAL
POBOLUS GRAN EMBANK	CU YD.	195	259	454
CLASS A E.C. STRUCT	CU YD.	117	117	234
CLASS X CONCRETE	CU YD.	203.2	227.2	430.4
REINFORCEMENT BAR	POUND	16621	27562	44183



ILLINOIS DIVISION OF HIGHWAYS
 SOUTH EXPRESSWAY
 CHGO. RIVER & INDIANA RR. STRUCTURE
 SOUTH OF PERSHING ROAD
PIERS 3 AND 4

FOR INFORMATION ONLY

BOWMAN, BARRETT & ASSOCIATES INC.
 CONSULTING ENGINEERS
 Chicago, Illinois
 312.228.0100
 www.bbandainc.com

REVISIONS	
NAME	DATE
REVISED	06/19/06

SHEET 8A OF 8
 ILLINOIS DEPARTMENT OF TRANSPORTATION
 F.A.I. 94/90 (DAN RYAN EXPRESSWAY)
 GARFIELD BLVD TO 31ST STREET (SB LOCAL LANES)
 RETAINING WALL S-39S-R
 EXISTING RETAINING WALL PLAN 3
 SCALE: NTS
 DATE: JUNE 9, 2006
 DRAWN BY: MTR
 CHECKED BY: BLU