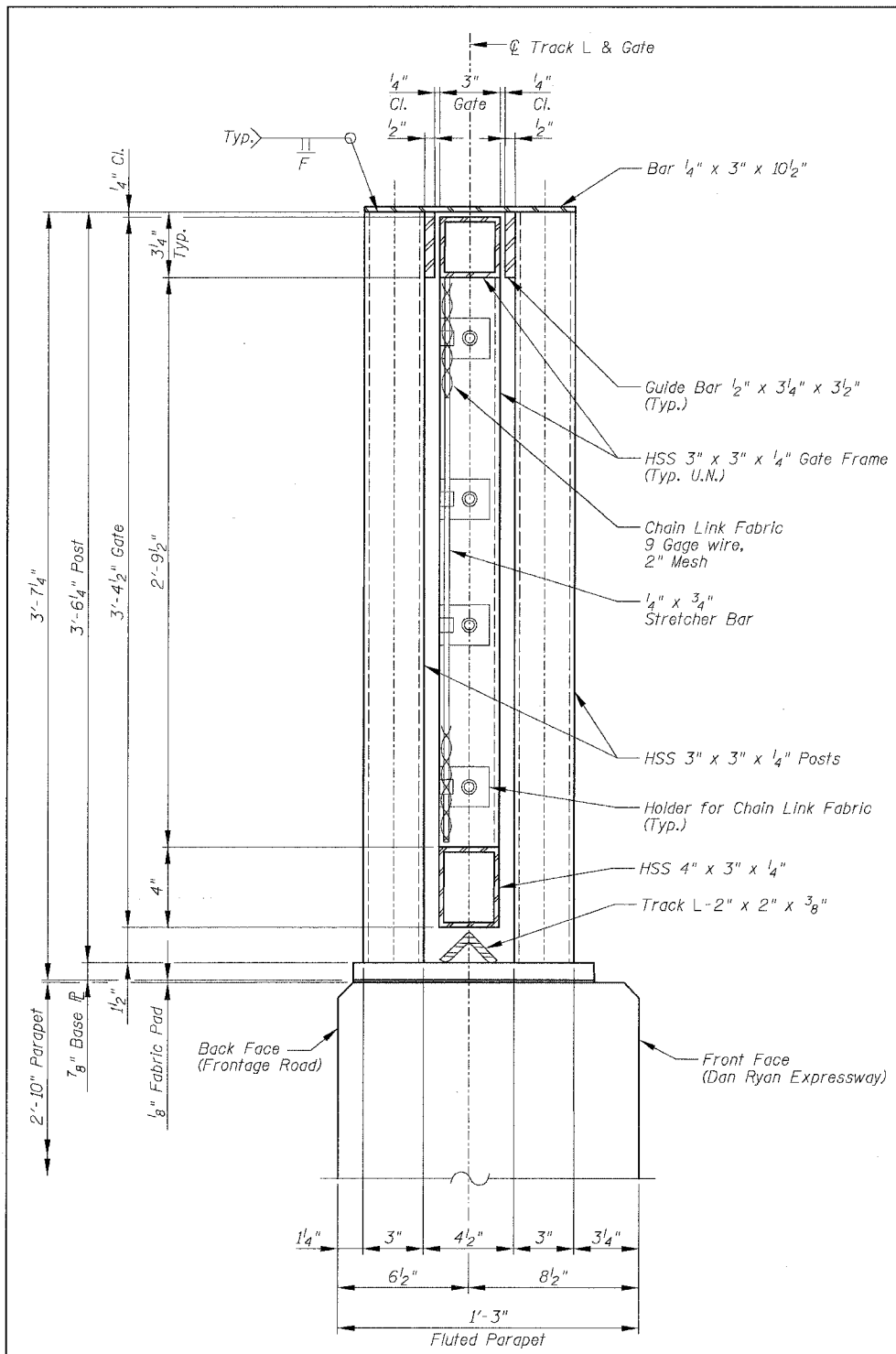
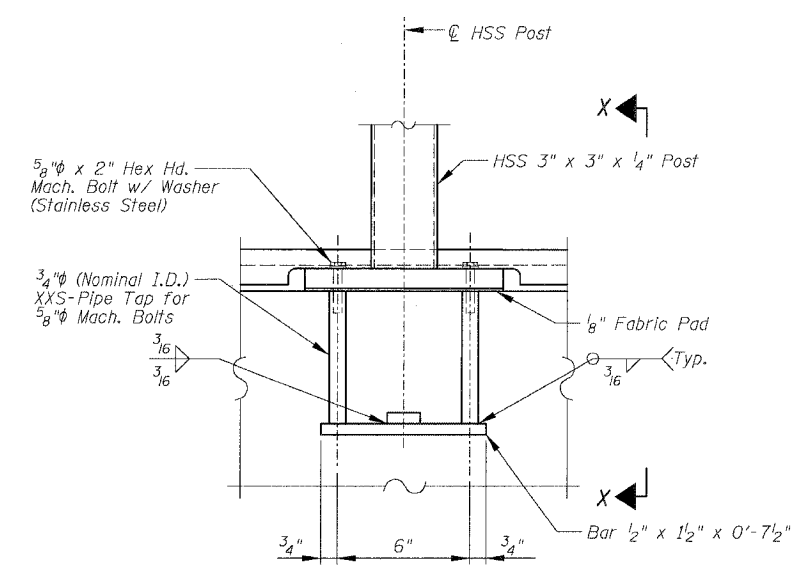


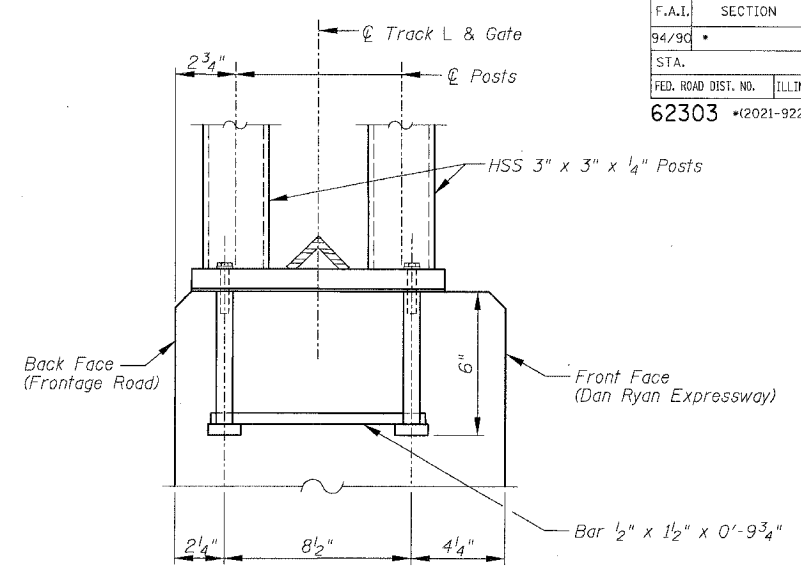
F.A.I.	SECTION	COUNTY	TOTAL SHEETS	SHEET NO.
94/90		COOK	588	456
STA.	TO STA.			
FED. ROAD DIST. NO.	ILLINOIS	FED. AID PROJECT		
62303	*(2021-922 PT2 ETC 2324.6-1P) R-11			



SECTION A-A



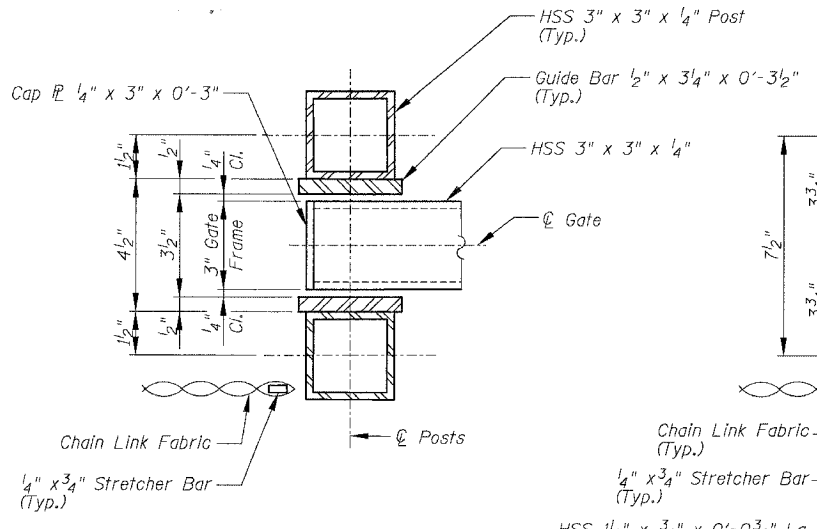
ELEVATION



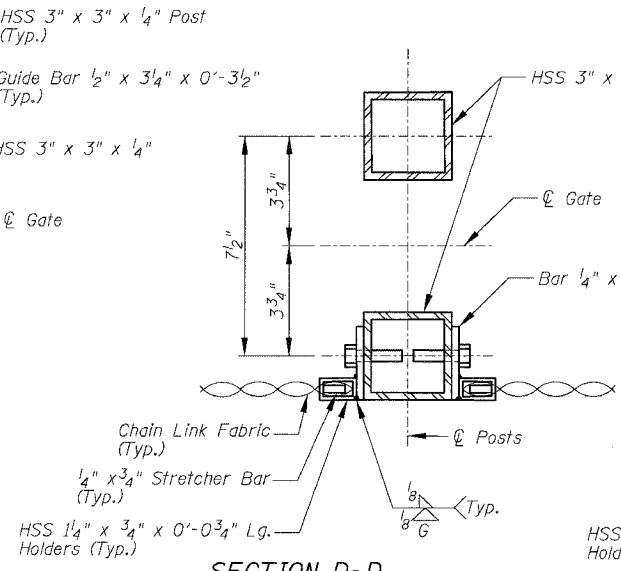
SECTION X-X

ANCHOR BOLT DETAILS

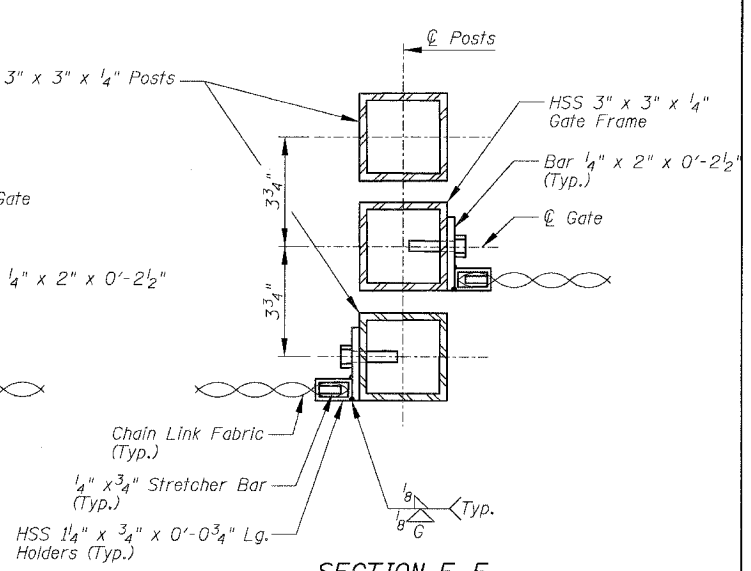
In lieu of the cast-in-place anchor device shown, the Contractor has the option of drilling and epoxy grouting 5/8" anchor rods with hex nuts and washers. Embedment shall be according to the manufacturer's specifications using HVA Adhesive anchor as manufactured by Hilti, Inc. or approved equal. Cost included with "Chain Link Gates (Special)".



SECTION B-B



SECTION D-D



SECTION E-E

NOTES:

1. See Sheet SD2A for Notes.
2. See Sheet SD3 for location of Sections A-A, B-B, D-D and E-E.

SHEET SD4 OF SD9

REVISIONS		ILLINOIS DEPARTMENT OF TRANSPORTATION F.A.I. 94/90 (DAN RYAN EXPRESSWAY) GARFIELD BLVD TO 31ST STREET (SB LOCAL LANES) CHAIN LINK FENCE, 42" ATTACHED TO STRUCTURE (SPECIAL) TYPICAL GATE SECTIONS & DETAILS 1
NAME	DATE	
		SCALE: NTS
		DATE: JUNE 9, 2006
		DRAWN BY: MTR
		CHECKED BY: BLU

BOWMAN, BARRETT & ASSOCIATES INC.
CONSULTING ENGINEERS
Chicago, Illinois
312.228.0100
www.bbandainc.com

6/8/2006 9:59:59 AM