

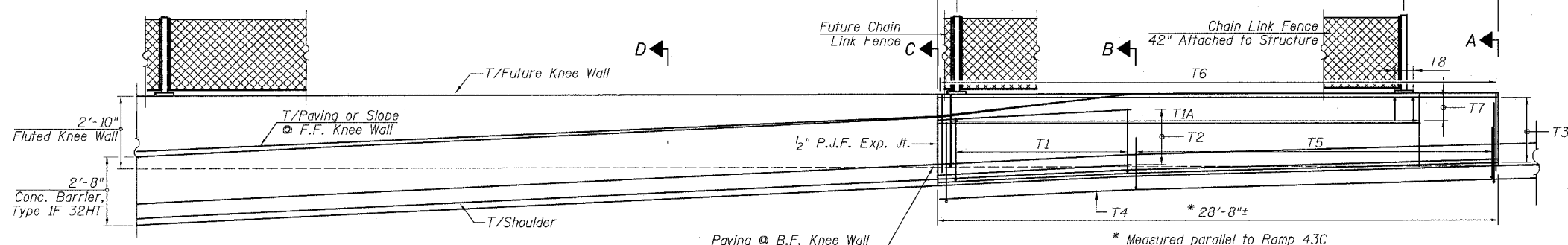
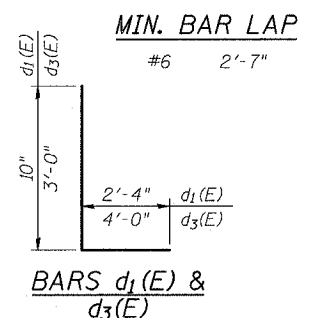
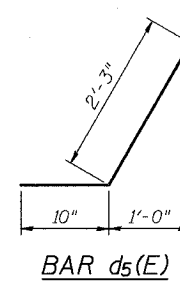
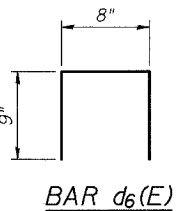
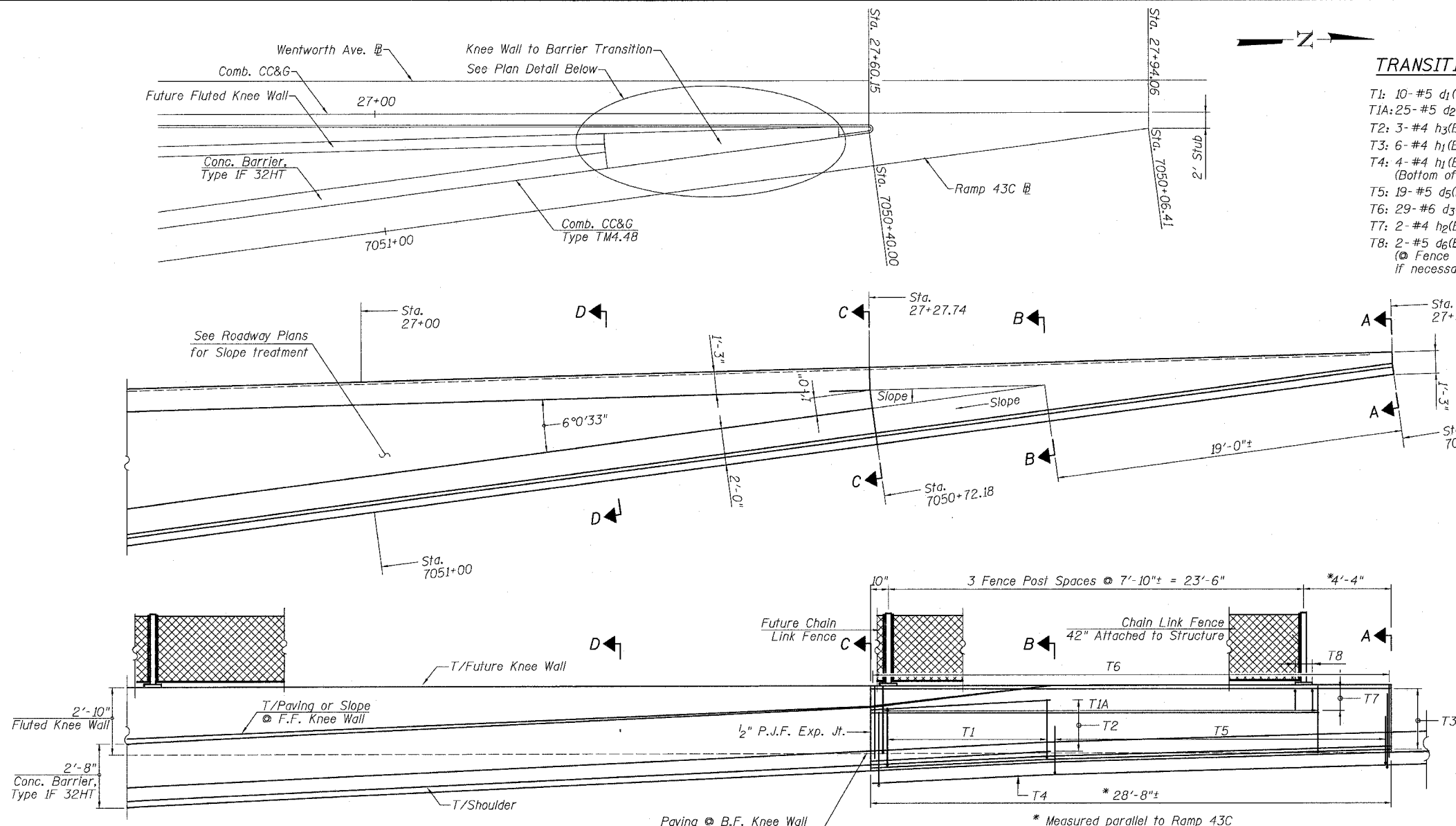
F.A.I.	SECTION	COUNTY	TOTAL SHEETS	SHEET NO.
94/90		COOK	588	457A
STA.	TO STA.			
FED. ROAD DIST. NO.	ILLINOIS	FED. AID PROJECT		
62303	*(2021-922 PT2 ETC 2324.6-1P) R-11			

**TRANSITION REINF. SCHEDULE**

- T1: 10- #5 d<sub>1</sub>(E) @ 12" cts. F.F.
- T1A: 25- #5 d<sub>2</sub>(E) @ 12" cts. F.F.
- T2: 3- #4 h<sub>3</sub>(E) bars @ 12" cts. F.F.
- T3: 6- #4 h<sub>1</sub>(E) bars @ 12" cts. B.F.
- T4: 4- #4 h<sub>1</sub>(E) bars @ 12" cts. (Bottom of Ramp Shoulder)
- T5: 19- #5 d<sub>5</sub>(E) bars @ 12" cts. F.F.
- T6: 29- #6 d<sub>3</sub>(E) & d<sub>4</sub>(E) bars @ 12" cts. B.F.
- T7: 2- #4 h<sub>2</sub>(E) bars @ 12" cts. F.F.
- T8: 2- #5 d<sub>6</sub>(E) bars @ 12" (Fence Post Anchor Bolts, rotate to fit if necessary)

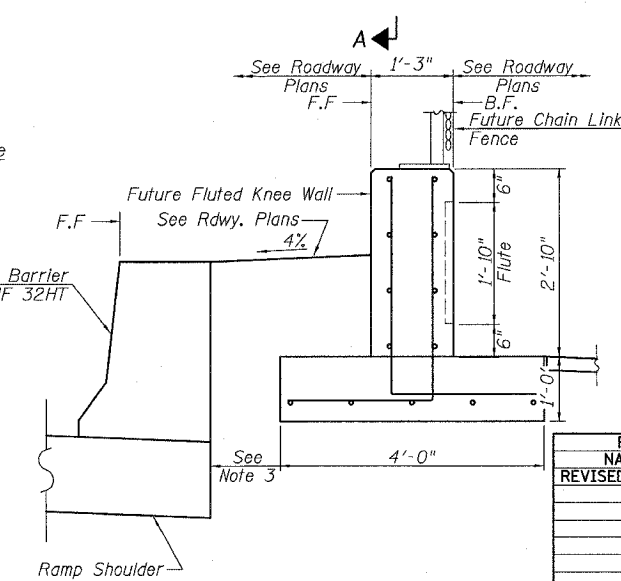
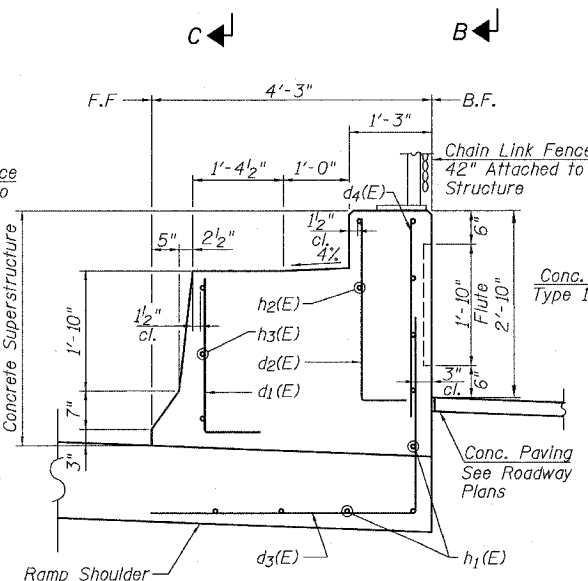
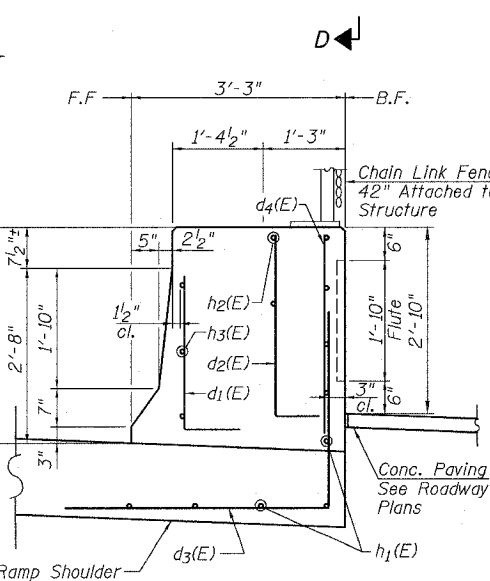
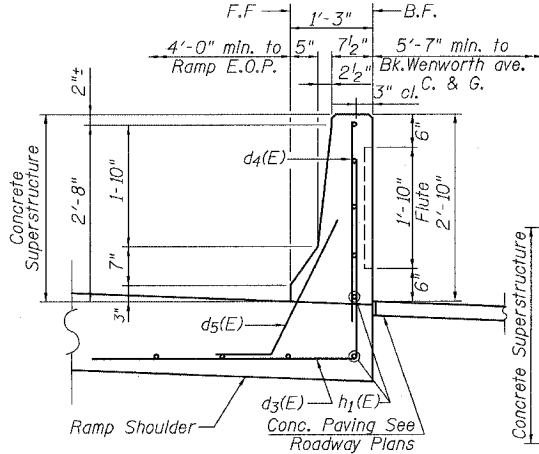
**BILL OF MATERIAL**

Bar	No.	Size	Length	Shape
d <sub>1</sub> (E)	10	#5	3'-2"	U
d <sub>2</sub> (E)	25	#5	3'-5"	U
d <sub>3</sub> (E)	30	#6	7'-0"	U
d <sub>4</sub> (E)	30	#6	3'-0"	U
d <sub>5</sub> (E)	19	#5	3'-1"	U
d <sub>6</sub> (E)	8	#5	2'-2"	U
h <sub>1</sub> (E)	9	#4	28'-2"	U
h <sub>2</sub> (E)	2	#4	24'-6"	U
h <sub>3</sub> (E)	3	#4	10'-0"	U
Concrete Superstructure		Cu. Yd.	8.0	
Reinforcement Bars, Epoxy Coated		Pound	874	
Chain Link Fence (Special)		Foot	23'-6"	
Protective Coat		Sq. Yd.	29	
Rustication Finish		Sq. Ft.	52	



**NOTES**

- F.F. and B.F. denote Front Face and Back Face of transition, respectively.
- See Roadway Plans for details regarding Ramp Shoulder construction.
- Where Barrier interferes with Knee Wall, taper edge of footing and shift/adjust footing reinforcement as necessary.
- Contractor is responsible for maintaining stability of Frontage Road during construction of Transition.
- See Roadway Plans for details of PCC Shoulder, 11" (Special) & Concrete Barrier, Single Face (Special).
- See Sheet SD1 for Fluted Knee Wall and Chain Link Fence details.
- Knee Wall/Barrier Transition shall be paid as "Concrete Superstructure", "Reinforcement Bars, Epoxy Coated", "Rustication Finish" and "Protective Coat".



BOWMAN, BARRETT & ASSOCIATES INC.  
CONSULTING ENGINEERS  
Chicago, Illinois  
312.228.0100  
www.bbainc.com

REVISIONS	
NAME	DATE
REVISED	6/21/06

**SHEET SD5A OF SD9**

ILLINOIS DEPARTMENT OF TRANSPORTATION  
F.A.I. 94/90 (DAN RYAN EXPRESSWAY)  
GARFIELD BLVD TO 31ST STREET (SB LOCAL LANES)

**SB EXPRESS LANES & RAMPS  
KNEE WALL/ BARRIER TRANSITION  
AT RAMP 43C**

SCALE: NTS  
DATE: JUNE 9, 2006  
DRAWN BY: PAH  
CHECKED BY: BLU

12/25/06 12:56:01 PM