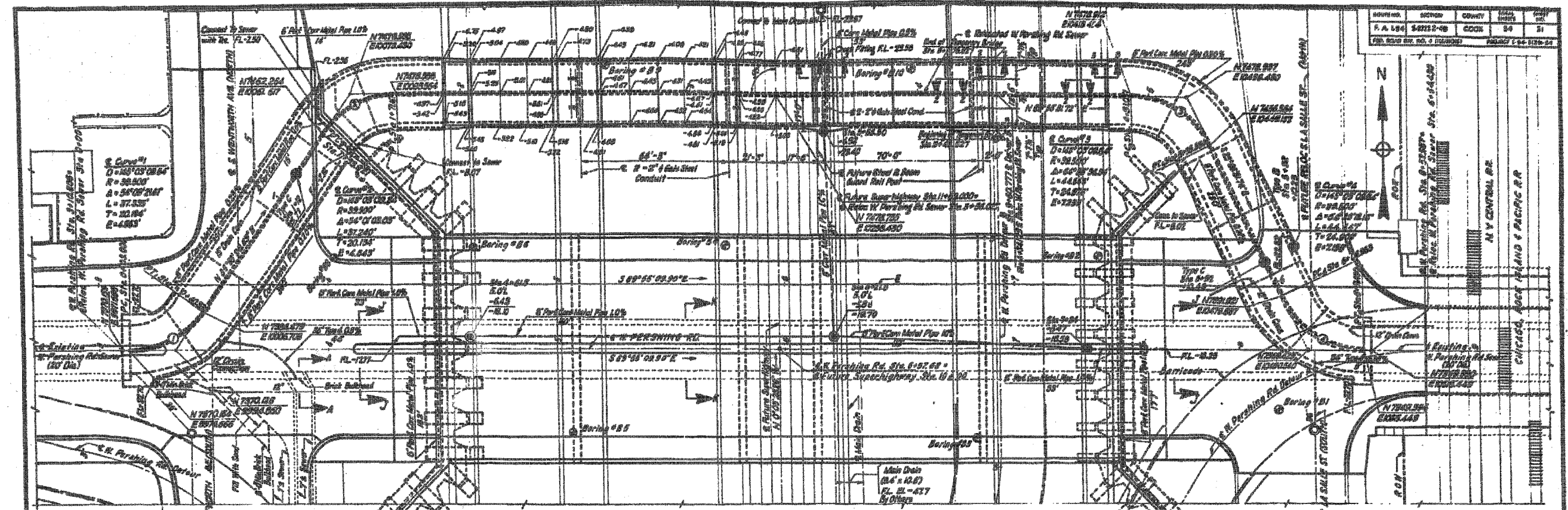
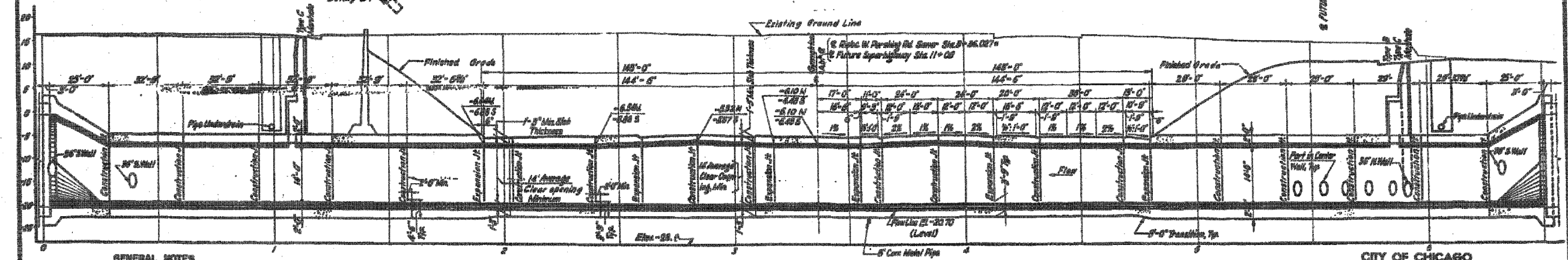


F.A.I.	SECTION	COUNTY	TOTAL SHEETS	SHEET NO.
94/90		COOK	588	472
STA.	TO STA.			
FED. ROAD DIST. NO.	ILLINOIS	FED. AID PROJECT		
62303 (I201-922 PT2 ETC 2324.6-1P) R-11				



PLAN
SCALE: 1"=50'



PROFILE
SCALE: HORIZONTAL 1"=50'
VERTICAL 1"=10'

GENERAL NOTES
 1. Design Specifications: AASHTO 1987 Modified; ARBA 1998 Modified; State of Illinois, Division of Highways 1998.
 2. Design Lane Loading: AASHTO HS20-44 or Alternate designated in PPM 33-4, Sec 4c; and Chicago Transit Authority, April 23, 1983.

NOTE
 1. Sewer Pipe shall be 12" to 18" in diameter as shown on plan.

2. See Section Trench Conditions and also S-4.

3. For Soil Boring Data, see also S-1 & S-4.

CITY OF CHICAGO
DEPARTMENT OF PUBLIC WORKS
BUREAU OF ENGINEERING
SOUTH ROUTE SUPERHIGHWAY

SHEET CUL-11 OF CUL-16

ILLINOIS DEPARTMENT OF TRANSPORTATION
 F.A.I. 94/90 (DAN RYAN EXPRESSWAY)
 GARFIELD BLVD TO 31ST STREET (SB LOCAL LANES)
 MWRD CULVERT, N. OF 39TH ST.,
 COOK COUNTY, S.N. 016-2625
 EXISTING PLAN AND ELEVATION

SCALE: N.T.S. DRAWN BY: BDC
 DATE: JUNE 9, 2006 CHECKED BY: BLU

FOR INFORMATION ONLY

REVISIONS	NAME	DATE

BOWMAN, BARRETT & ASSOCIATES INC.
 CONSULTING ENGINEERS
 Chicago, Illinois
 312.228.0100
 www.bbainc.com

6/8/2006