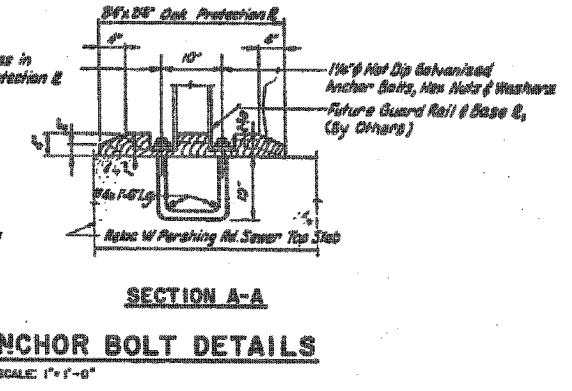
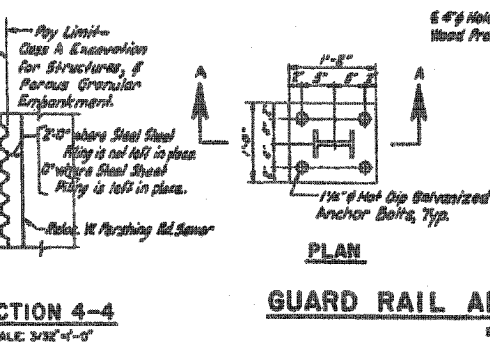
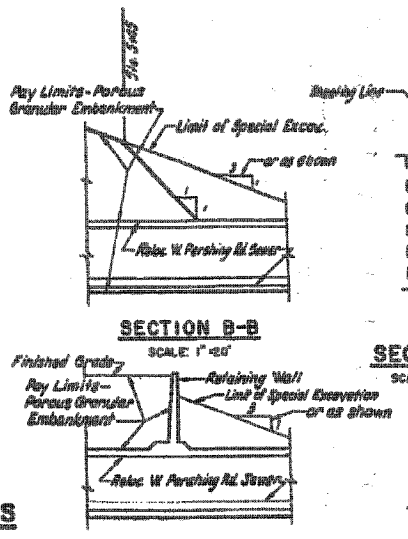
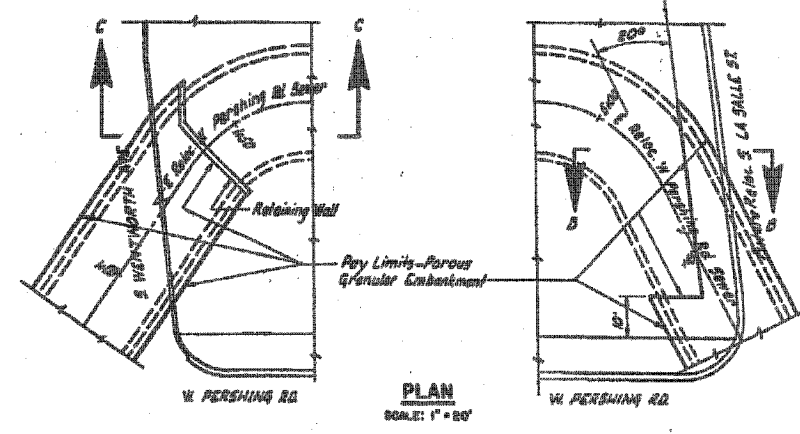
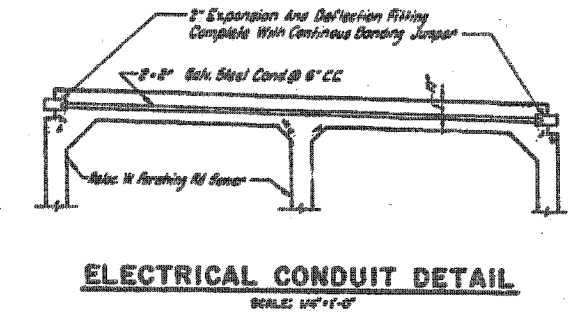
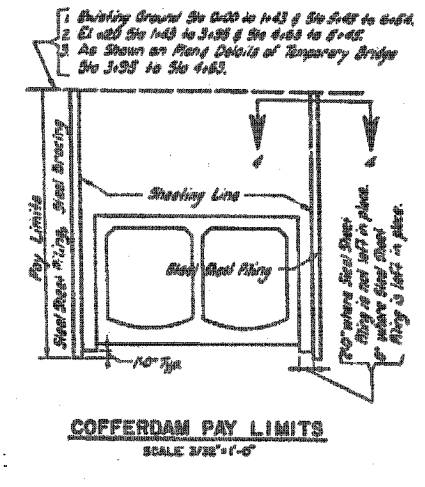
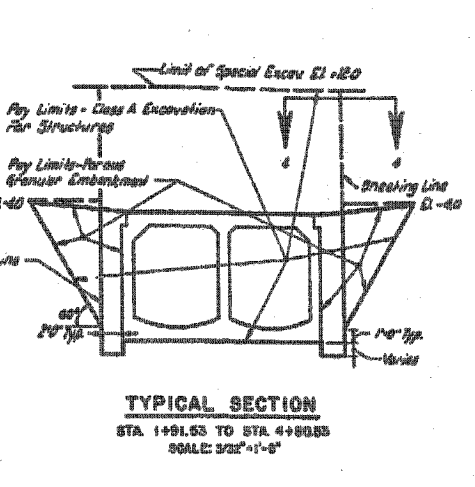
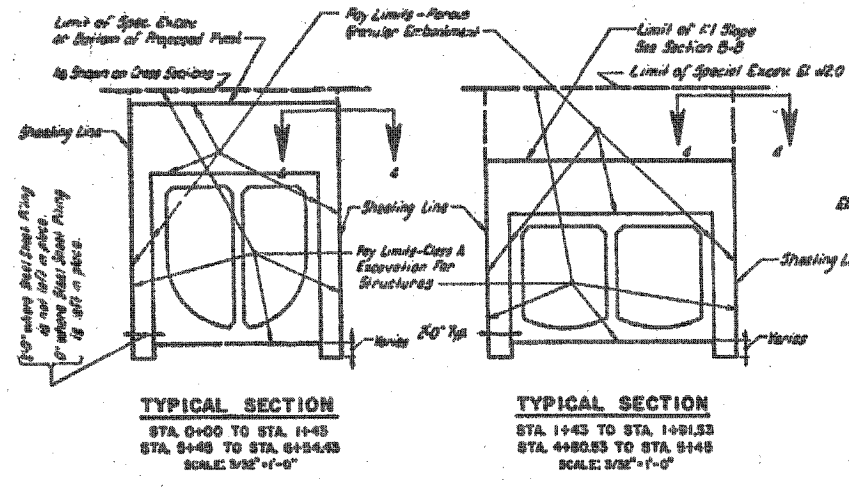
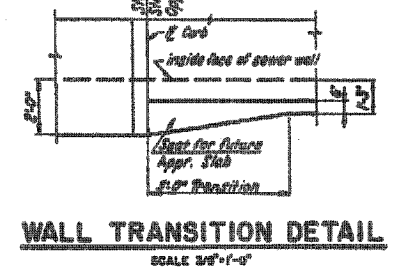
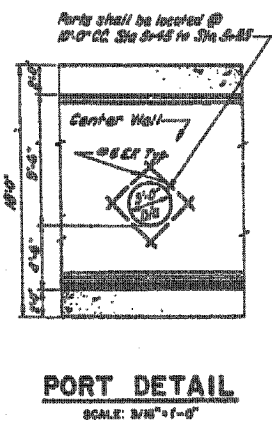
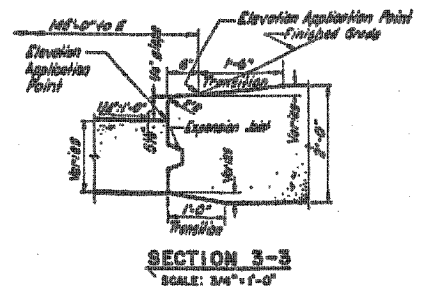
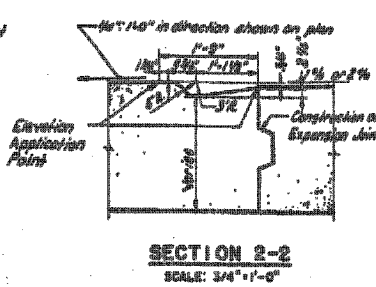
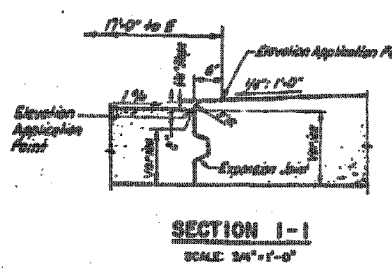


NO. TO SHEET	SECTION	COUNTY	DATE	BY
F. A. I. 94	2324.2-48	COOK	04	BA
FED. ROAD DIST. NO.	ILLINOIS		PROJECT NO. 12021-922	



GUARD RAIL ANCHOR BOLT DETAILS

- NOTE:**
1. For Location of Sections 1-1, 2-2, 3-3, see sheet 3-5.
 2. For Details of Construction & Expansion Joints, see sheet 3-6.
 3. For Location of Electrical Conduit & Guard Rail Anchor Bolts, see sheet 3-5.



CITY OF CHICAGO
DEPARTMENT OF PUBLIC WORKS
BUREAU OF ENGINEERING
SOUTH ROUTE SUPERHIGHWAY
SECTION S-2324.2-48
W. PERSHING ROAD BRIDGE
SEWER MISCELLANEOUS
DETAILS

SHEET CUL-13 OF CUL-16

REVISIONS	NAME	DATE

ILLINOIS DEPARTMENT OF TRANSPORTATION
F.A.I. 94/90 (DAN RYAN EXPRESSWAY)
GARFIELD BLVD TO 31ST STREET (SB LOCAL LANES)
MWRD CULVERT, N. OF 39TH ST.,
COOK COUNTY, S.N. 016-2625
EXISTING GENERAL DETAILS

SCALE: N.T.S. DRAWN BY: BDC
DATE: JUNE 9, 2006 CHECKED BY: BLU

FOR INFORMATION ONLY

BOWMAN, BARRETT & ASSOCIATES INC.
CONSULTING ENGINEERS
Chicago, Illinois
312.228.0100
www.bbainc.com

6/12/2006 8:35:48 AM