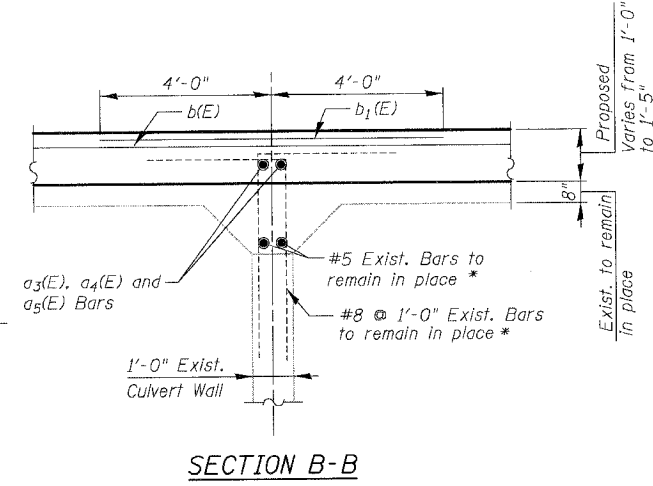
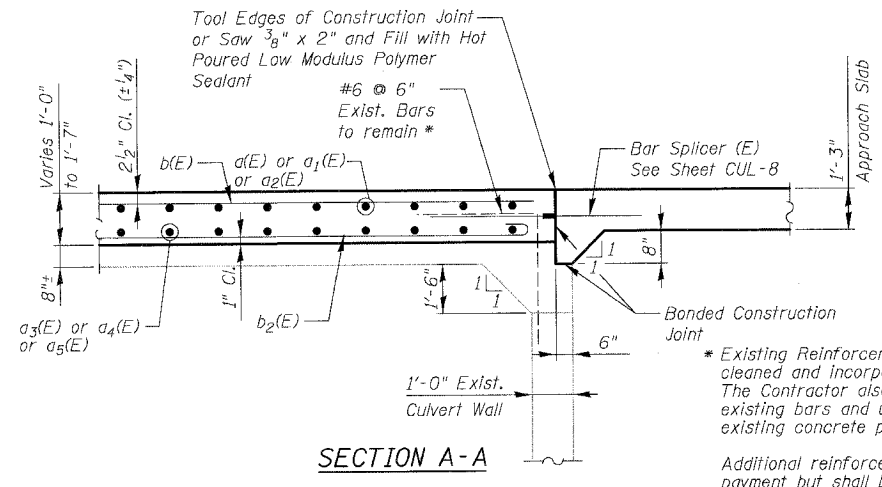
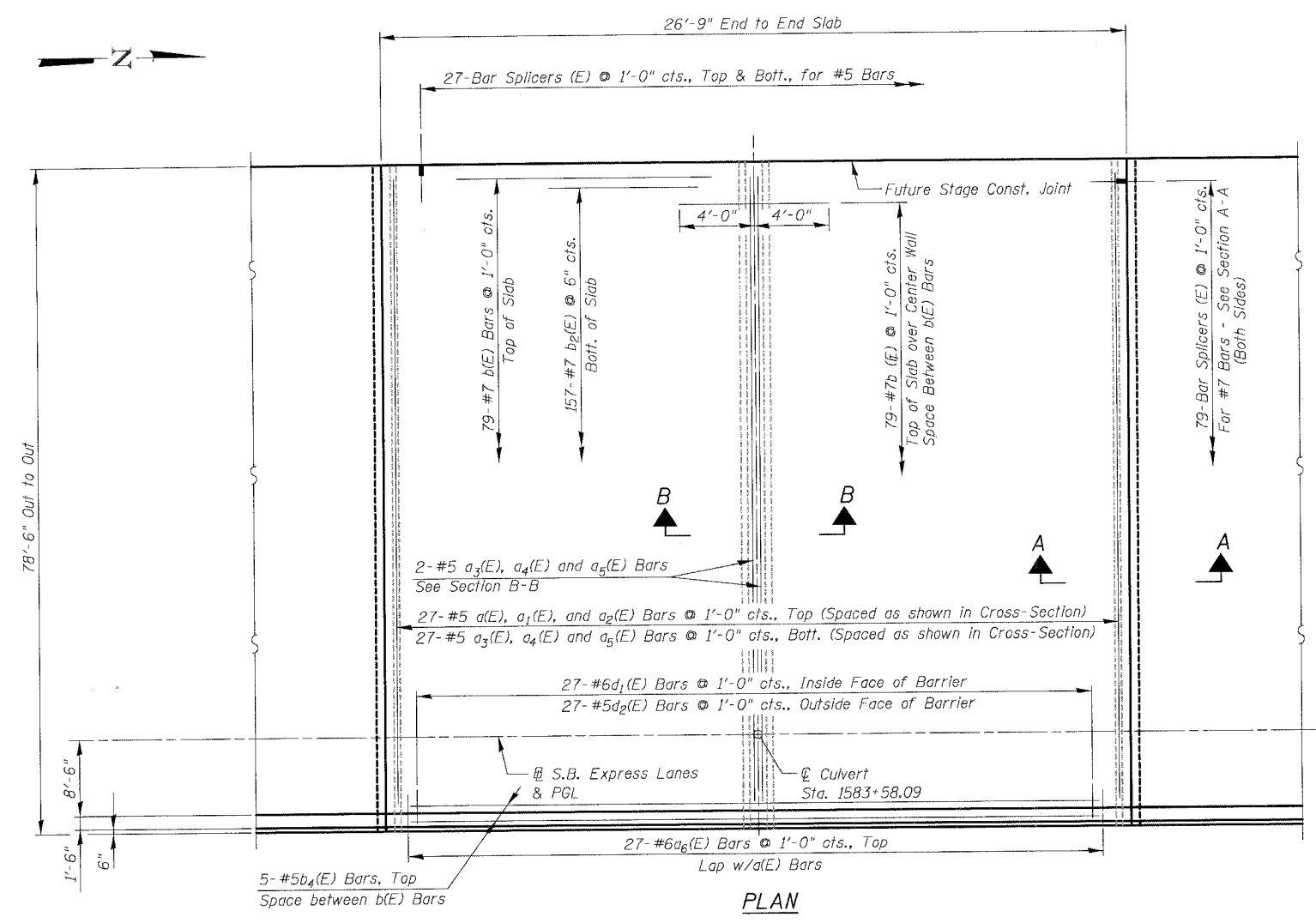


F.A.I.	SECTION	COUNTY	TOTAL SHEETS	SHEET NO.
94/90		COOK	588	476
STA.	TO STA.			
FED. ROAD DIST. NO.	ILLINOIS	FED. AID PROJECT		
62303	*2021-922 PT2 ETC 2324.6-1P1 R-11			



\* Existing Reinforcement Bars shown are to be cleaned and incorporated into new construction. The Contractor also has the option to cut the existing bars and use new bars anchored to the existing concrete pier per approval of the Engineer.

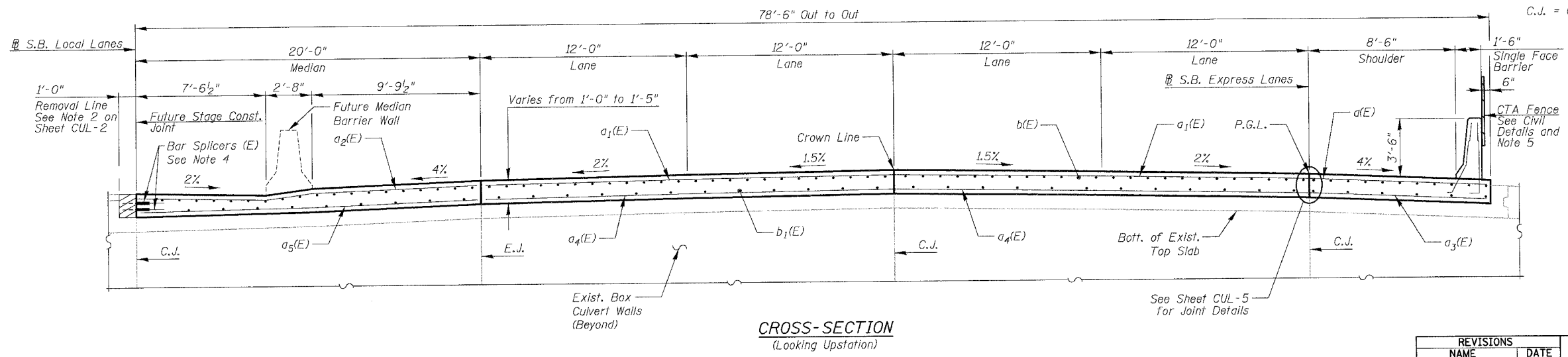
Additional reinforcement shall not be measured for payment but shall be included in the cost of "Reinforcement Bars, Epoxy Coated".

**NOTES**

1. Reinforcement Bars designated (E) shall be epoxy coated.
2. See Sheet CUL-5 for Top Slab Details and Bill of Material.
3. See Sheet CUL-8 for Bar Splicer Details.
4. Contractor shall provide bar splicers as shown here and on Sheet CUL-6. Install Stage I portion and provide Stage II portion to the Engineer. Plug threadedcoupler with plastic nipple or H.S. Bolt for protection. Cost included with "Bar Splicers".
5. Provide terminal posts and fence "expansion" joint at end of Approach Pavement. Space fence posts to miss barrier joints.

**ABBREVIATIONS**

- E.J. = Expansion Joint
- C.J. = Construction Joint



BOWMAN, BARRETT & ASSOCIATES INC.  
CONSULTING ENGINEERS  
Chicago, Illinois  
312.228.0100  
www.bbandainc.com

FOR INFORMATION ONLY

REVISIONS	
NAME	DATE

SHEET CUL-15 OF CUL-16

ILLINOIS DEPARTMENT OF TRANSPORTATION

F.A.I. 94/90 (DAN RYAN EXPRESSWAY)

GARFIELD BLVD TO 31ST STREET (SB LOCAL LANES)

MWRD CULVERT, N. OF 39TH ST.,

COOK COUNTY, S.N. 016-2625

TOP SLAB FROM CONTRACT 62302

SCALE: N.T.S. DRAWN BY: BLU

DATE: JUNE 9, 2006 CHECKED BY: BLU

166500000/CULVERT/94/90/15\_P1705490 8/18/2006