

STATE OF ILLINOIS
DEPARTMENT OF TRANSPORTATION

ROUTE NO.	SECTION	COUNTY	STATION	SHEET	SHEET NO. 6
FAP 505	115 BR-1	WINNEBAGO	35	15	OF 12 SHEETS
FEL. ROAD DIST. NO.	ALLIANCE	FEL. AD. PROJECT			

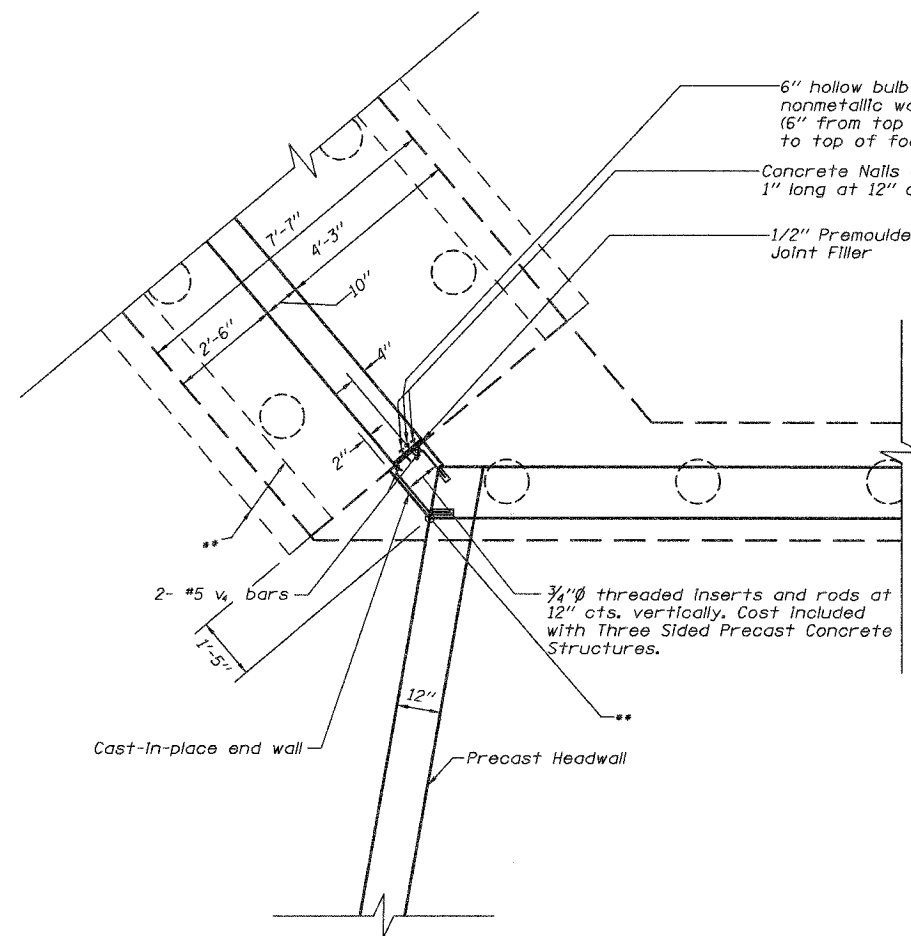
Contract #64940

Notes:
Precast headwall details shall be submitted to the Engineer For Approval.
Cost of Precast Headwalls, P.J.F., Waterseal, and nails shall be included with cost of Three-Sided Precast Concrete Structures.

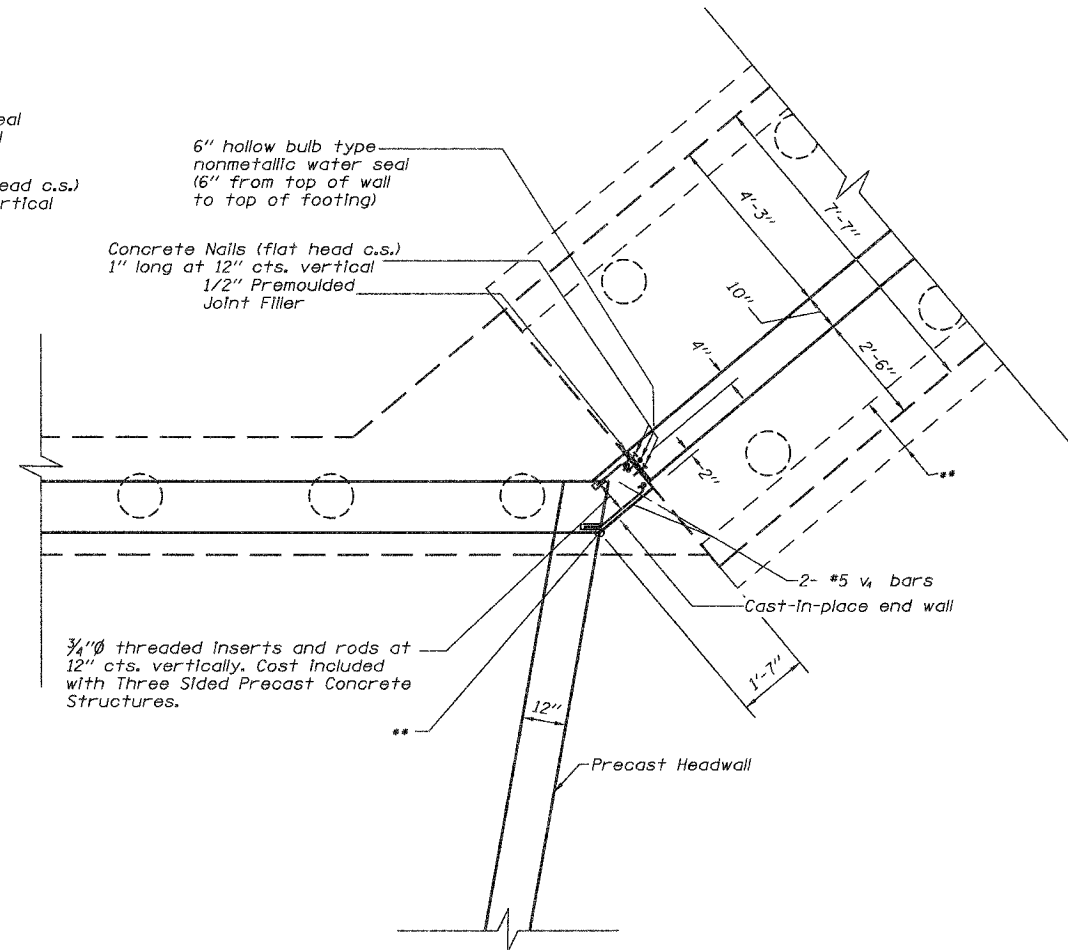
Posts shall be installed plumb by mounting baseplate flush against Top Slab and cutting posts to match slope.

For quantity of Steel Plate Guardrail Attached to Structure see roadway plans.

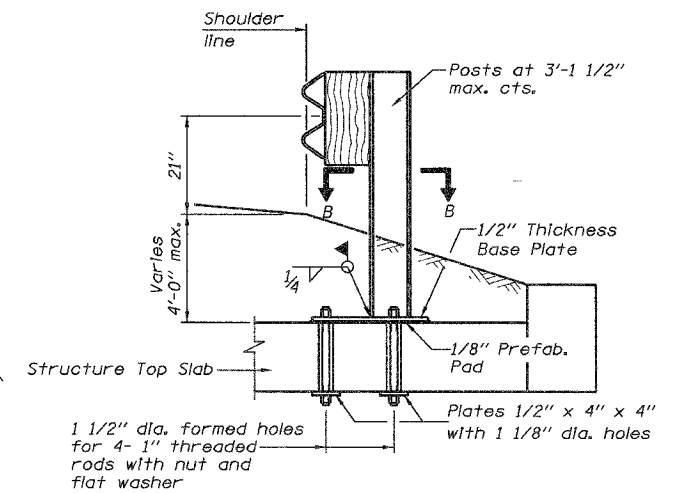
For details of guardrail elements not shown, see Standard 630001.



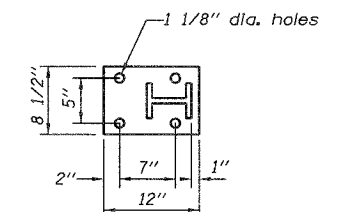
NORTHEAST AND SOUTHWEST
CORNER DETAIL



NORTHWEST AND SOUTHWEST
CORNER DETAIL



GUARDRAIL ATTACHMENT DETAIL



SECTION B-B

Note:
The contractor shall coordinate placement of guardrail posts for steel plate beam guardrail attached to structures with the precast supplier for the three sided concrete structure. Posts shall be located to provide adequate edge distance for anchor bolts for post base plates near joints in precast concrete segments. Post locations may be adjusted perpendicular to the guardrail by increasing the depth of the wood breakout by up to 6"

** The location of the inside corner of the precast leg may vary due to tolerances in the precast segments. The cast-in-place end walls shall be poured after the precast units and headwall are in place. The wing footings and wingwalls shall be poured after the headwalls and end walls are in place. A slight adjustment in the placement of the wingwall and its footing may be necessary to align the wingwall with the end wall as shown.

DESIGNED	JLS
CHECKED	JDA
DRAWN	NOE
CHECKED	JLS

CORNER DETAILS
IL RTE 75 OVER
TIMOTHY CREEK
FAP ROUTE 505
SECTION 115BR-1
WINNEBAGO COUNTY
STA. 63+23.20
SN 101-0183