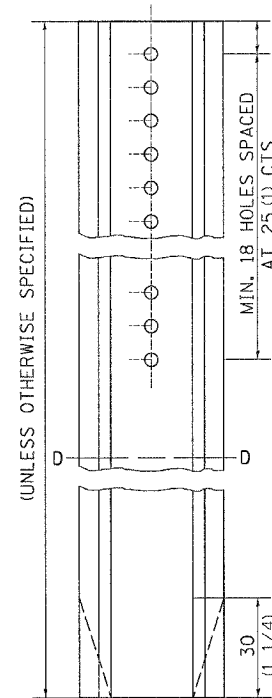
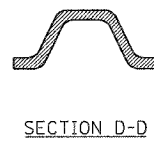
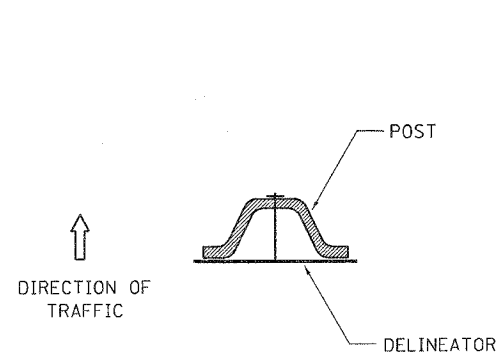


F.A.P. RTE.	SECTION	COUNTY	TOTAL SHEETS	SHEET NO.
505	115BR-1	WINNEBAGO	35	31
STA.		TO STA.		
FED. ROAD DIST. NO.		ILLINOIS	FED. AID PROJECT	

# DELINEATOR AND POST ORIENTATION



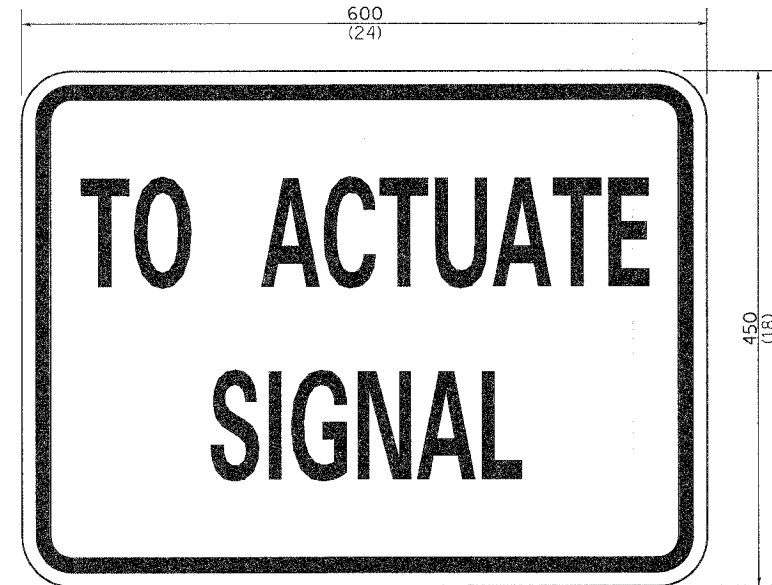
DELINEATORS SHALL BE INSTALLED ACCORDING TO STANDARD 635001 EXCEPT THAT THE POST SHALL BE ROTATED 180°. THE POST WILL HAVE THE WIDE SIDE FACING TRAFFIC AND THE DELINEATOR ATTACHED AS SHOWN ABOVE.

ALL DIMENSIONS ARE IN MILLIMETERS (INCHES) UNLESS OTHERWISE NOTED.

**DELINEATOR AND POST ORIENTATION 37.4**

REVISED 1-31-00

# STOP LINE SIGN FOR TEMPORARY SIGNALS



SIZE: 600(24) x 450(18)  
 100(4) CAPITAL LETTERS - BLACK  
 13(1/2) BORDER - BLACK  
 WHITE REFLECTIVE - TYPE B  
 ENGINEERING GRADE SHEETING

**GENERAL NOTE:**

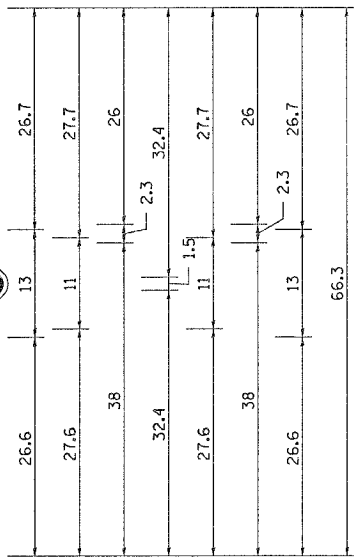
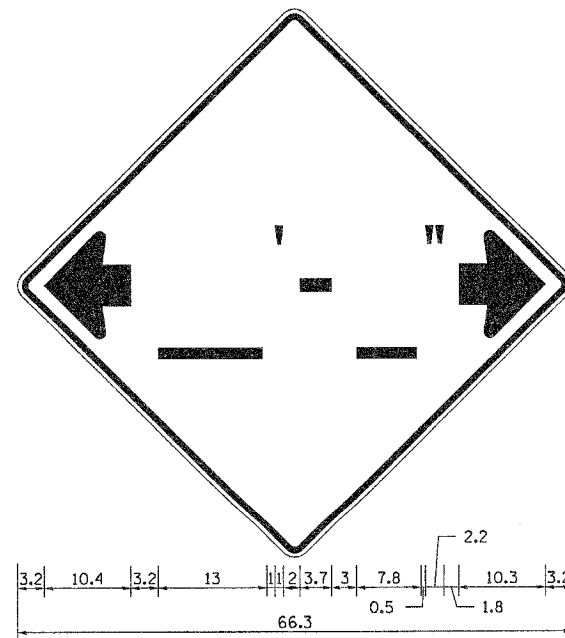
THIS SIGN SHALL BE INSTALLED AT THE STOP LINE AS DIRECTED BY ENGINEER.

ALL DIMENSIONS ARE IN MILLIMETERS (INCHES) UNLESS OTHERWISE NOTED.

**STOP LINE SIGN FOR TEMPORARY SIGNALS 99.4**

REVISED 8-7-90

# INFORMATIONAL WARNING SIGN (FOR NARROW TRAVEL LANES)



**NOTES**

W12-2 - Horizontal Clearance Sign  
 48.0" across sides, 1.9" Radius,  
 0.8" Border, 0.5" Indent, Black on  
 Orange; Standard Arrow Custom  
 10.4" X 8.1" 180° Black 11 Inch  
 D Series Lettering; Standard Arrow  
 Custom 10.4" X 8.1" 0°

All work to furnish and install these signs shall be included in the cost of the Traffic Control Standards and shall not be paid for separately.

ALL DIMENSIONS ARE IN INCHES UNLESS OTHERWISE NOTED.

**INFORMATIONAL WARNING SIGN (FOR NARROW TRAVEL LANES) 39.4**

REVISED 6-29-05