

F.A.S. RTE.	SECTION	COUNTY	TOTAL SHEETS	SHEET NO.
1671	*	DOUGLAS	181	1

* 144SBR-2 & 22VBR-1

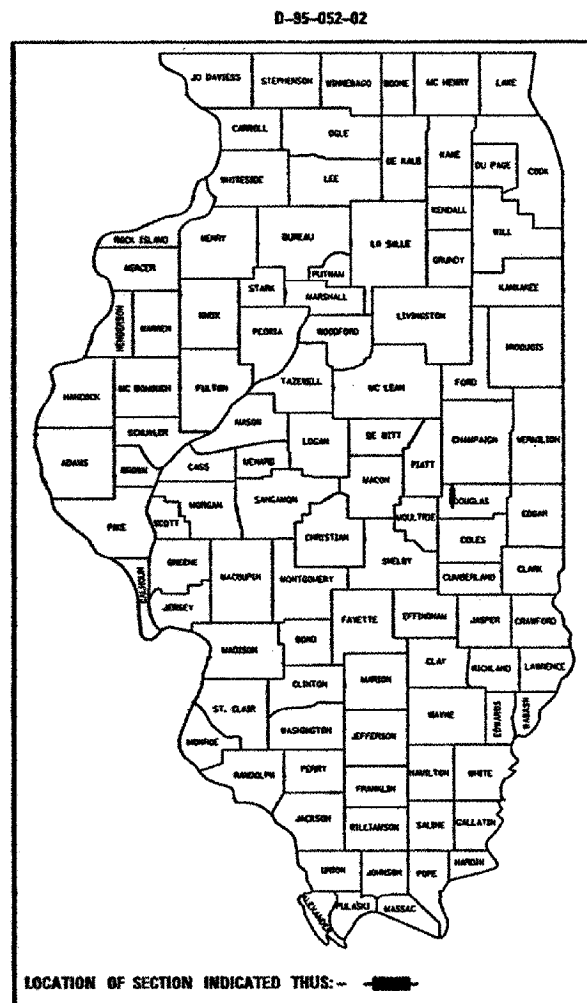
STATE OF ILLINOIS
DEPARTMENT OF TRANSPORTATION
DIVISION OF HIGHWAYS

**PROPOSED
HIGHWAY PLANS**

F.A.S. ROUTE 1671 (U.S. RTE. 45)
SECTION 144SBR-2 & 22VBR-1
PROJECT BRS-1671(108)
DOUGLAS COUNTY

C-95-100-02
BRIDGE REPLACEMENT
OVER UP & CSX RR & OVER U.S. 36 AT TUSCOLA

FOR INDEX OF SHEETS, SEE SHEET NO. 2
FOR SUMMARY OF QUANTITIES, SEE SHEET NO. 5



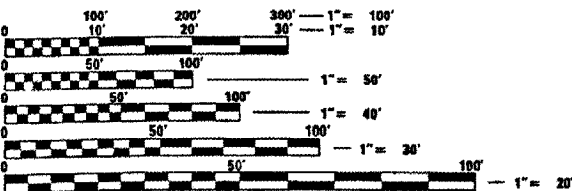
(217)465-4111

PROJECT ENGINEER: KEVIN TRAPP

SQUAD LEADER: CHRIS GREESON

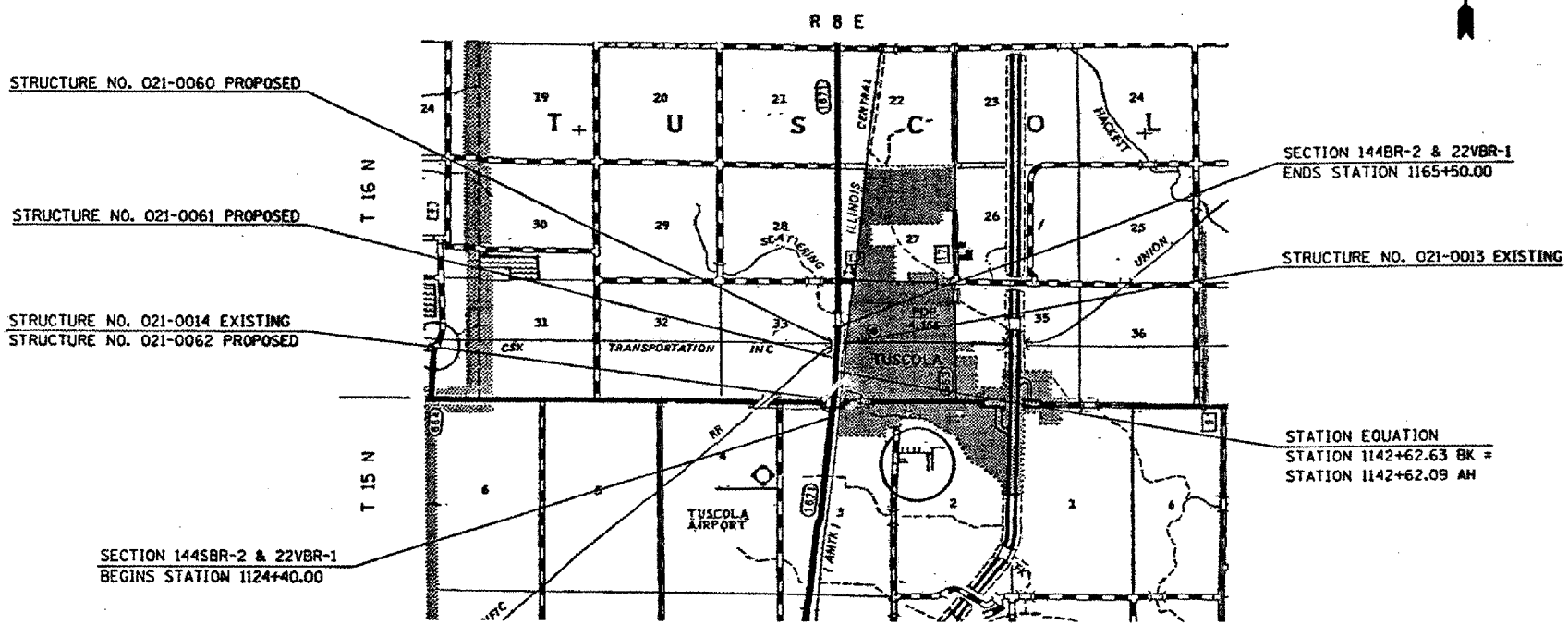
CURRENT ADT
F.A.S. 1671 (U.S. RTE. 45) = 2650 (2003)

DESIGN DESIGNATION
2910 (17) COLLECTOR 3.81 (FD-20)



FULL SIZE PLANS HAVE BEEN PREPARED USING STANDARD ENGINEERING SCALES. REDUCED SIZED PLANS WILL NOT CONFORM TO STANDARD SCALES. IN MAKING MEASUREMENTS ON REDUCED PLANS, THE ABOVE SCALES MAY BE USED.

J.U.L.I.E.
JOINT UTILITY LOCATION INFORMATION FOR EXCAVATION
1-800-892-0123 TUSCOLA TOWNSHIP



TOTAL LENGTH OF SECTION & PROJECT = 4,110.54 FEET = 0.779 MILES
NET LENGTH OF SECTION & PROJECT = 4,110.54 FEET = 0.779 MILES

STATE OF ILLINOIS
DEPARTMENT OF TRANSPORTATION
DIVISION OF HIGHWAYS

SUBMITTED JULY 5, 2006
[Signature]
DEPUTY DIRECTOR OF HIGHWAYS, REGION ENGINEER

August 18, 2006
[Signature]
ENGINEER OF DESIGN AND ENVIRONMENT

August 18, 2006
[Signature]
DIRECTOR OF HIGHWAYS, CHIEF ENGINEER

**PRINTED BY THE AUTHORITY
OF THE STATE OF ILLINOIS**

PLOT DATE : 7/5/2006
FILE NAME : C:\p\proj\70258\text\70258text.dgn
PLOT SCALE : 43.2353 1/16
USER NAME : p1erconbr

CONTRACT NO. 70258