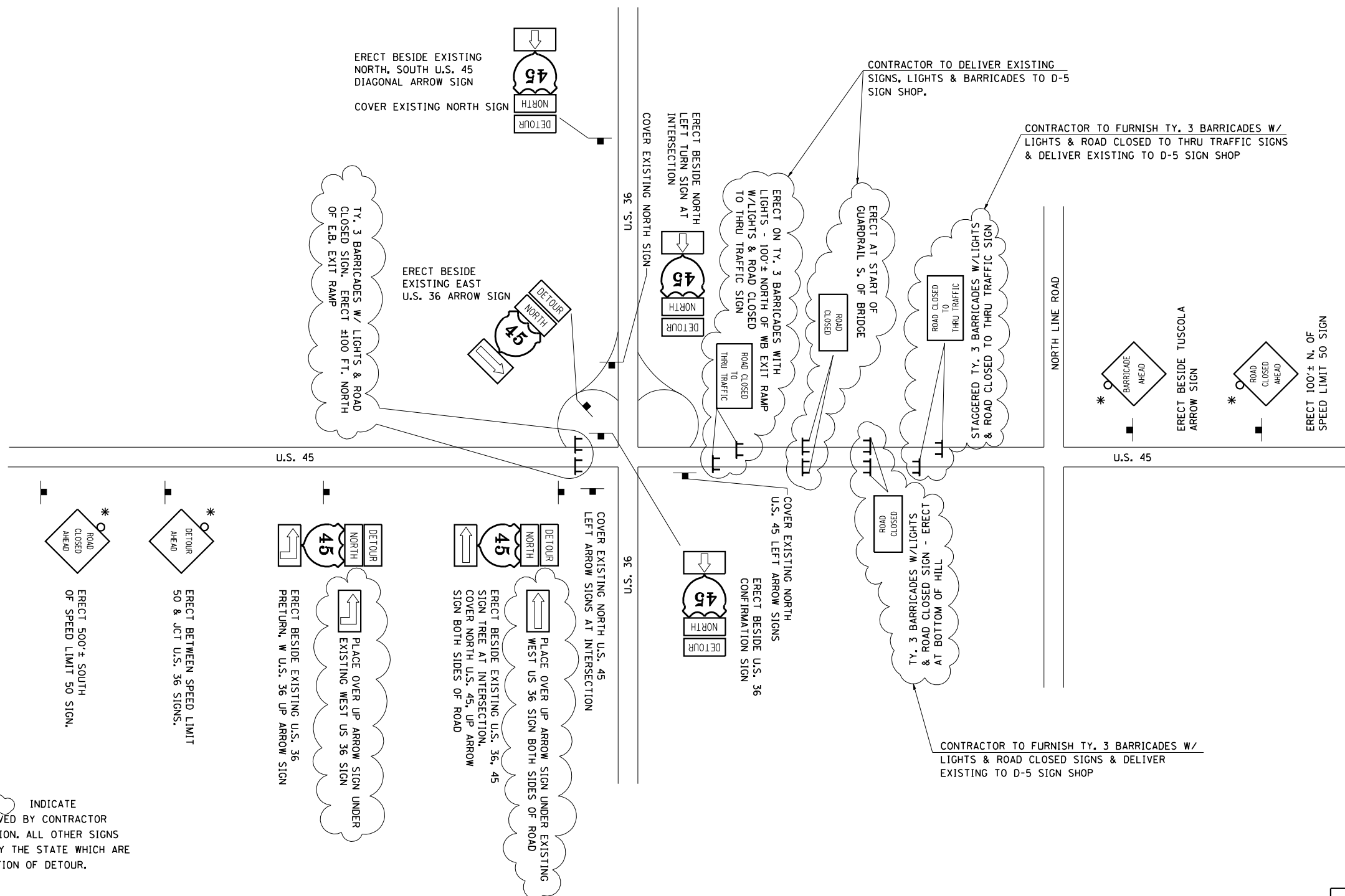


F.A.S. RTE.	SECTION	COUNTY	TOTAL SHEETS	SHEET NO.
1671		DOUGLAS	181	23
STA.		TO STA.		
FED. ROAD DIST. NO.	ILLINOIS	FED. AID PROJECT		

• 144SBR-2 & 22VBR-1



ITEMS DENOTED BY INDICATE SIGNS TO BE ERECTED OR REMOVED BY CONTRACTOR PRIOR TO START OF CONSTRUCTION. ALL OTHER SIGNS ARE EXISTING SIGNS ERECTED BY THE STATE WHICH ARE TO REMAIN IN PLACE FOR DURATION OF DETOUR.

* CONTRACTOR TO FURNISH LIGHTS & DELIVER EXISTING LIGHTS TO D-5 SIGN SHOP.

THIS WORK TO BE PAID FOR AS:
"TRAFFIC CONTROL & PROTECTION (DETOUR)"

FOR OTHER SIGNS ON U.S. 36,
SEE PRE-STAGE PLANS.

ILLINOIS DEPARTMENT OF TRANSPORTATION
DETOUR SIGNING DETAIL
U.S. 45 AT U.S. 36 - TUSCOLA
F.A.S. ROUTE 1671 (U.S. ROUTE 45)
SECTION 144SBR-2 & 22VBR-1
DOUGLAS COUNTY

SCALE: NOT TO SCALE
DATE: 06/05/06
DRAWN BY: B.B.P.
CHECKED BY: C.R.G.