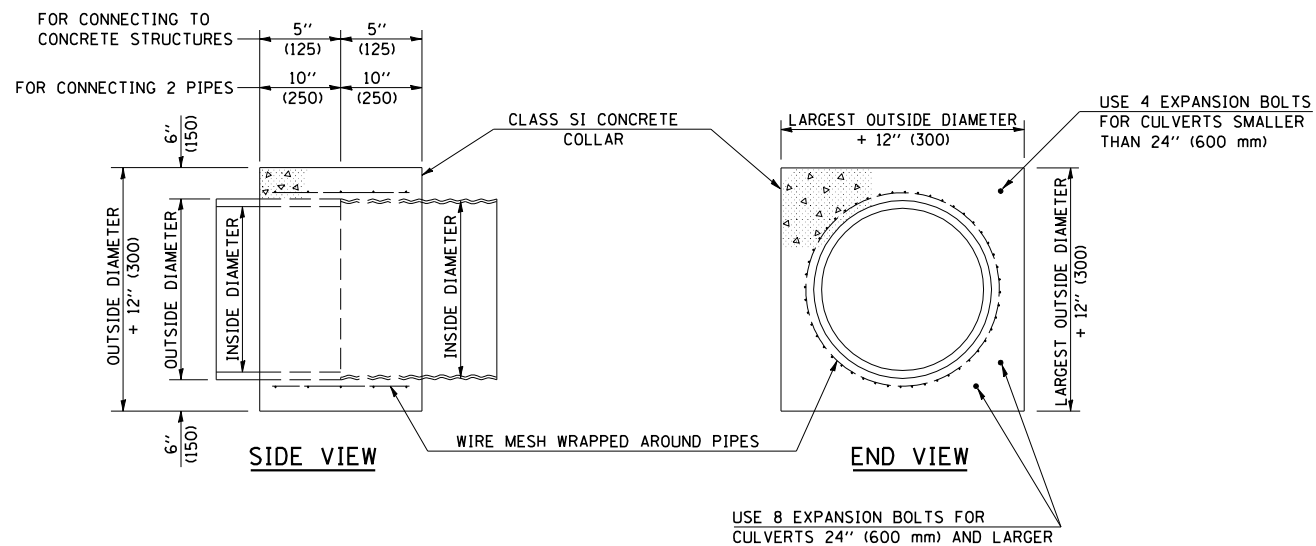


F.A.S. RTE.	SECTION	COUNTY	TOTAL SHEETS	SHEET NO.
1671	.	DOUGLAS	181	133
STA.		TO STA.		
FED. ROAD DIST. NO.	ILLINOIS	FED. AID PROJECT		

• 144SBR-2 & 22VBR-1

DETAIL OF CONCRETE COLLARS



INSIDE DIAMETER OF PIPE	ESTIMATED CLASS SI CONCRETE REQUIRED
INCH (mm)	20" (500 mm) WIDTH CU. YD. (m ³)
4" (100)	0.14 (0.11)
6" (150)	0.16 (0.12)
8" (200)	0.19 (0.14)
10" (250)	0.22 (0.17)
12" (300)	0.25 (0.19)
15" (375)	0.30 (0.23)
18" (450)	0.35 (0.27)
24" (600)	0.45 (0.35)
30" (750)	0.57 (0.43)
36" (900)	0.69 (0.53)
42" (1050)	0.83 (0.63)
48" (1200)	0.97 (0.74)
54" (1350)	1.12 (0.86)
60" (1500)	1.28 (0.98)

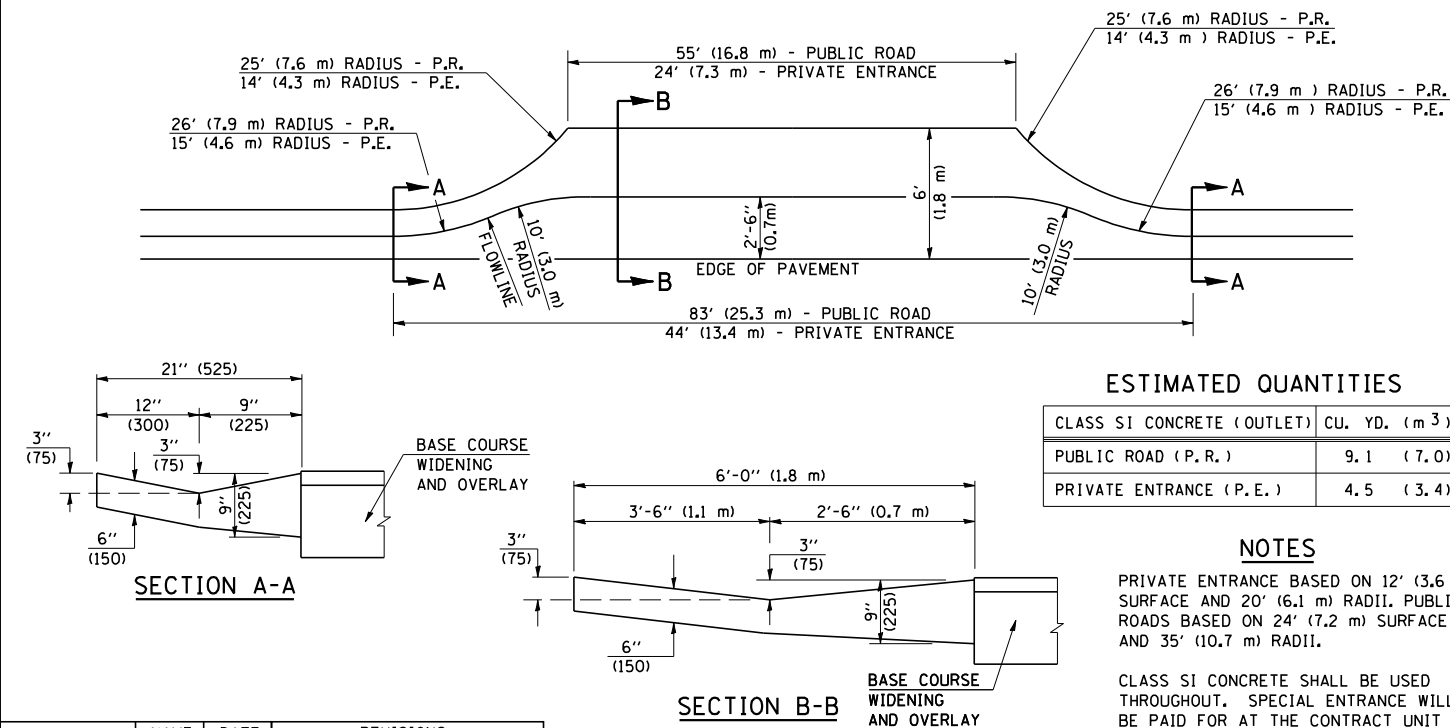
INSIDE DIAMETER OF PIPE	ESTIMATED CLASS SI CONCRETE REQUIRED
INCH (mm)	20" (500 mm) WIDTH CU. YD. (m ³)
4" (100)	0.12 (0.09)
6" (150)	0.14 (0.11)
8" (200)	0.16 (0.12)
10" (250)	0.19 (0.14)
12" (300)	0.21 (0.16)
15" (375)	0.25 (0.19)
18" (450)	0.29 (0.22)
24" (600)	0.38 (0.29)
30" (750)	0.47 (0.36)
36" (900)	0.59 (0.45)
42" (1050)	0.69 (0.53)
48" (1200)	0.81 (0.62)
54" (1350)	0.93 (0.71)
60" (1500)	1.05 (0.81)

GENERAL NOTES

- CLASS SI CONCRETE SHALL BE USED THROUGHOUT.
- WHEN CONCRETE COLLARS ARE USED TO CONNECT PIPES OF DIFFERENT OUTSIDE DIAMETERS, THE CONCRETE COLLAR SHALL BE FORMED USING THE LARGEST OUTSIDE DIAMETER (SEE END VIEW).
- THE WIRE MESH SHALL WEIGH NOT LESS THAN 54#/100 SQ. FT. (2.63 kg/m²).
- WHEN CONCRETE COLLARS ARE CONSTRUCTED ADJACENT TO AN EXISTING CONCRETE STRUCTURE (HEADWALLS, ETC.) EXPANSION BOLTS, SHALL BE USED AND WILL BE PAID FOR AT THE CONTRACT UNIT PRICE, EACH, FOR EXPANSION BOLTS OF THE SIZE SPECIFIED IN THE PLANS.
- CONCRETE COLLARS WILL BE PAID FOR AT THE CONTRACT UNIT PRICE, PER CUBIC YARD (CUBIC METER), FOR CONCRETE COLLARS INCLUDING ALL MATERIAL AND LABOR SPECIFIED TO COMPLETE THE WORK IN PLACE.

DETAIL OF SPECIAL ENTRANCE FOR TYPE B GUTTER (MODIFIED)

(NEXT TO RESURFACING)



ESTIMATED QUANTITIES

CLASS SI CONCRETE (OUTLET)	CU. YD. (m ³)
PUBLIC ROAD (P.R.)	9.1 (7.0)
PRIVATE ENTRANCE (P.E.)	4.5 (3.4)

NOTES

PRIVATE ENTRANCE BASED ON 12' (3.6 m) SURFACE AND 20' (6.1 m) RADII. PUBLIC ROADS BASED ON 24' (7.2 m) SURFACE AND 35' (10.7 m) RADII.

CLASS SI CONCRETE SHALL BE USED THROUGHOUT. SPECIAL ENTRANCE WILL BE PAID FOR AT THE CONTRACT UNIT PRICE PER CUBIC YARD (CUBIC METER) FOR CLASS SI CONCRETE (OUTLET).

ALL DIMENSIONS ARE IN INCHES (MILLIMETERS) UNLESS OTHERWISE SHOWN.

	NAME	DATE	REVISIONS	
			NAME	DATE
DESIGNED	D.L.P.	3-17-95		
CHECKED	B.K.T.	5-25-95	K.A.G.	06/03
CADD NO.	A-1.12			

	NAME	DATE	REVISIONS	
			NAME	DATE
DESIGNED	J.M.H.	4-80		
CHECKED	P.E.K.	4-80	D.L.P.	08/00
CADD NO.	J-5.45			

ALL DIMENSIONS ARE IN INCHES (MILLIMETERS) UNLESS OTHERWISE SHOWN.

ILLINOIS DEPARTMENT OF TRANSPORTATION
SPECIAL ENTRANCE & CONCRETE COLLARS DETAILS
 F.A.S. ROUTE 1671 (U.S. ROUTE 45)
 SECTION 144SBR-2 & 22VBR-1
 DOUGLAS COUNTY

SCALE: 1" = 20'
 DATE: 06/07/06
 DRAWN BY: B.B.P.
 CHECKED BY: C.R.G.