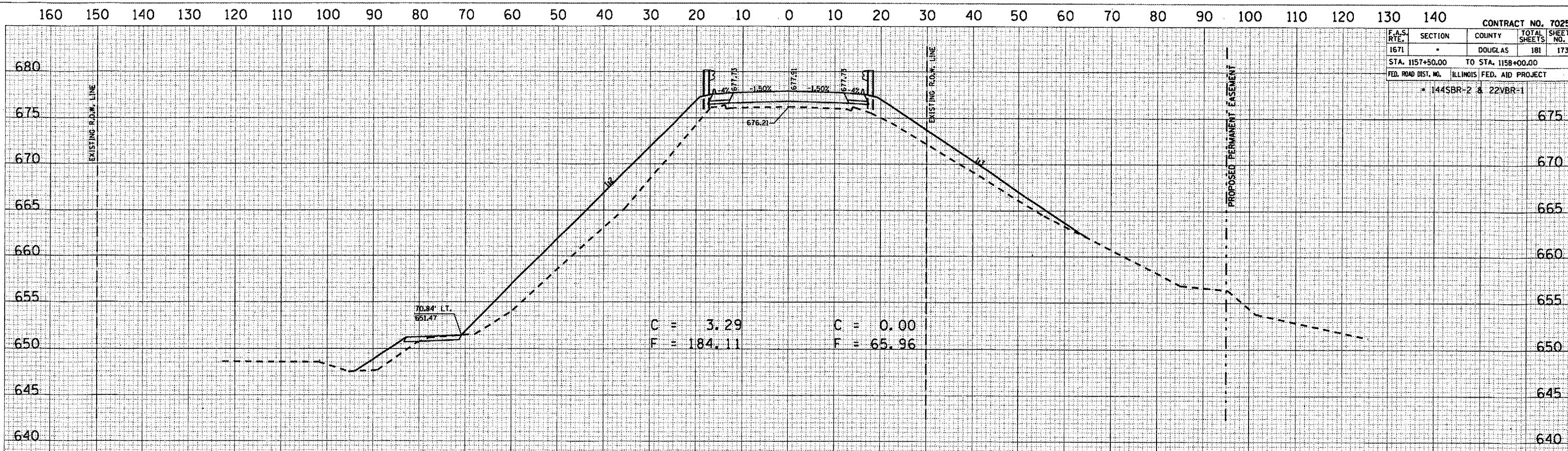


F.A.S. RT#	SECTION	COUNTY	TOTAL SHEETS	SHEET NO.
1671	*	DOUGLAS	181	173
STA. 1157+50.00		TO STA. 1158+00.00		
FED. ROAD DIST. NO. ILLINOIS FED. AID PROJECT				
* 1445BR-2 & 22VBR-1				

DATE	BY

NO.	AREAS CHECKED



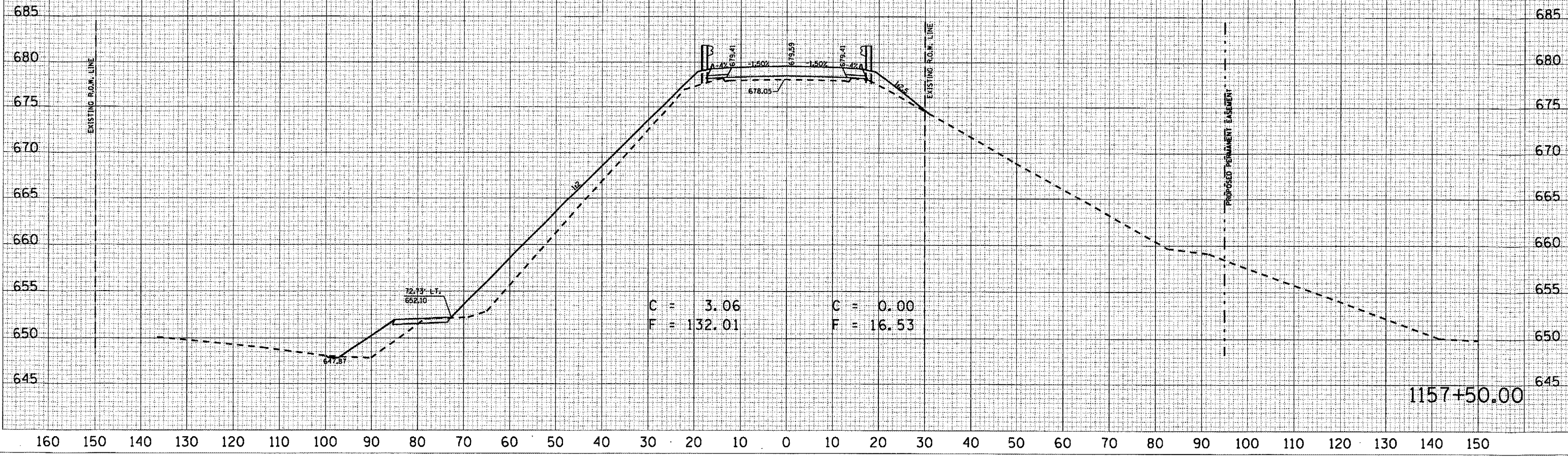
C = 3.29      C = 0.00  
 F = 184.11    F = 65.96

1158+00.00

DATE	BY

NO.	AREAS CHECKED



C = 3.06      C = 0.00  
 F = 132.01    F = 16.53

1157+50.00

DATE: 7/10/2006  
 FILE NAME: C:\Users\jrb\Documents\1157+50.00-1158+00.00.dwg  
 PLOT SCALE: 2.175" / 1" IN.  
 USER NAME: jrb