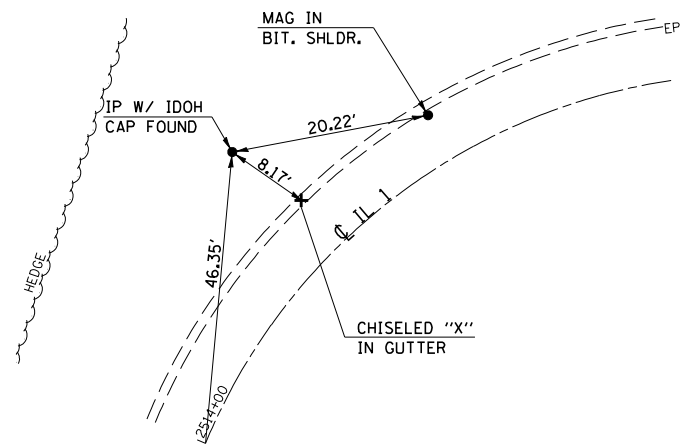


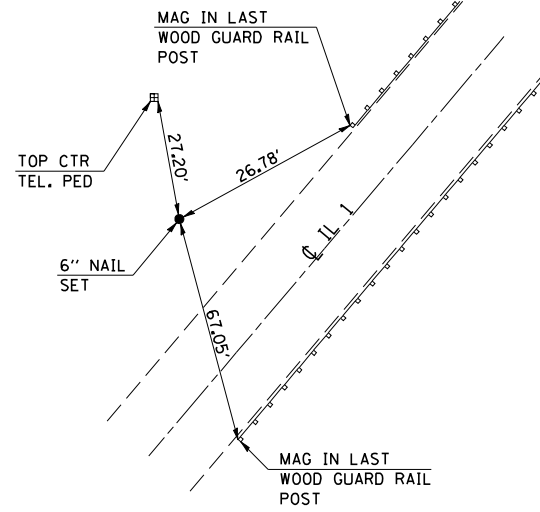
| F.A.P. RTE. | SECTION | COUNTY | TOTAL SHEETS | SHEET NO. |
|-------------|---------|-----------|--------------|-----------|
| 332 | 47BR-2 | VERMILION | 68 | 12 |

TIE POINTS

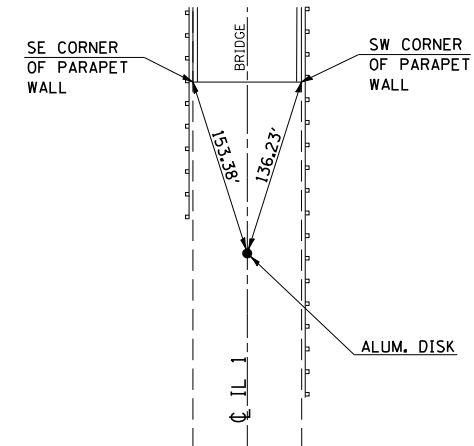
TRAV. PT. 28
STATION 2514 + 44.38, 30.98' LT.



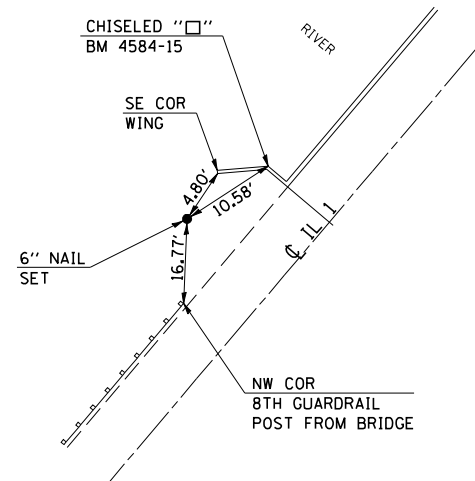
TOPO POINT 402
STATION 2519 + 42.76, 26.58' LT.



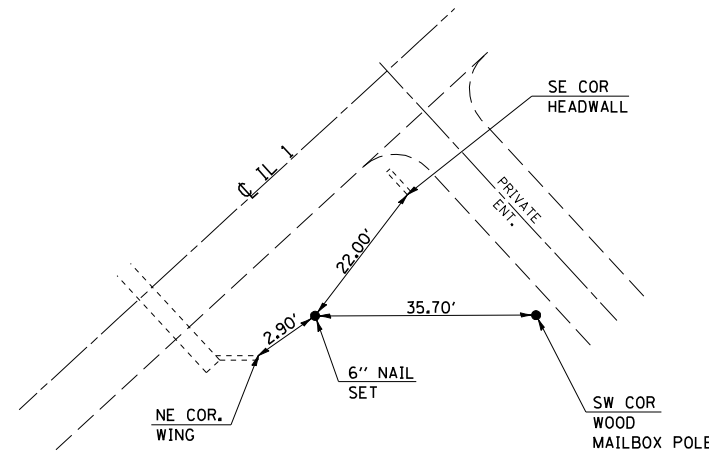
PT CURVE 149
STATION 2520 + 17.99



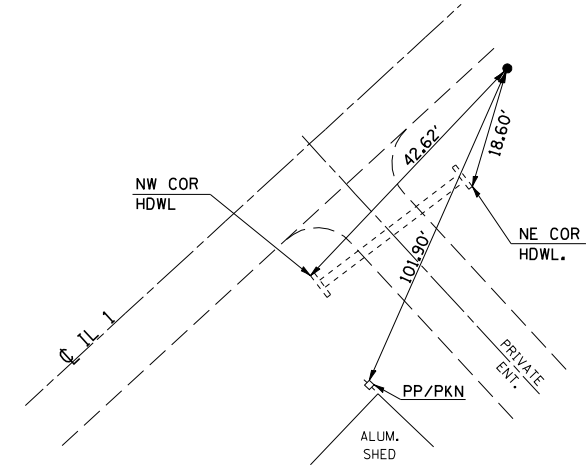
TOPO POINT 401
STATION 2521 + 61.51, 33.10' LT.



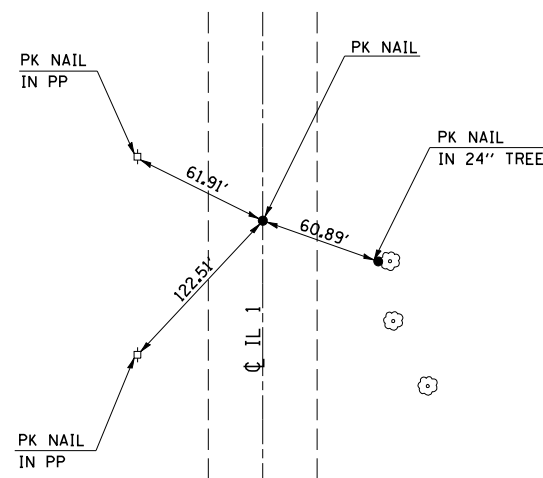
TOPO POINT 400
STATION 2524 + 21.99, 33.39' RT.



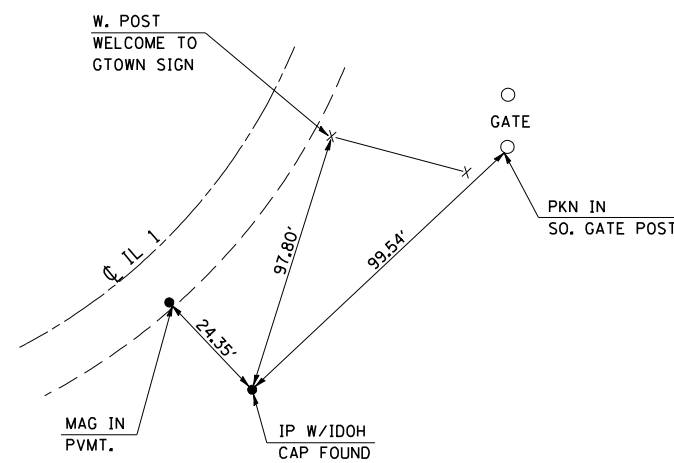
TRAV. STA. 27
STATION 2527 + 76.82, 19.19' RT.



PI KINK
STATION 2529 + 62.56



TRAV. STA. 26
STATION 2541 + 54.85, 58.92' LT.



PLOT DATE = 6/30/2006
 FILE NAME = c:\projects\view\45060004 (v8)\70420details.dgn
 PLOT SCALE = 42.3529' / IN.
 USER NAME = nelsonrm

ILLINOIS DEPARTMENT OF TRANSPORTATION
TIE POINTS
 F.A.P. 332 (U.S. ROUTE 150/IL 1)
 SECTION 47BR-2
 VERMILION COUNTY

SCALE: NOT TO SCALE
 DATE: 04/18/06
 DRAWN BY: B.B.P.
 CHECKED BY: R.M.J.