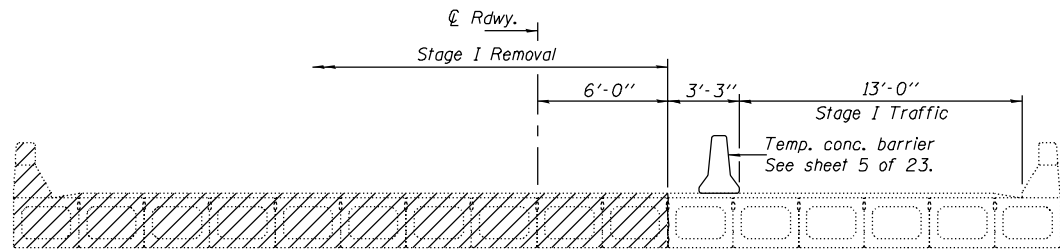


STATE OF ILLINOIS
DEPARTMENT OF TRANSPORTATION

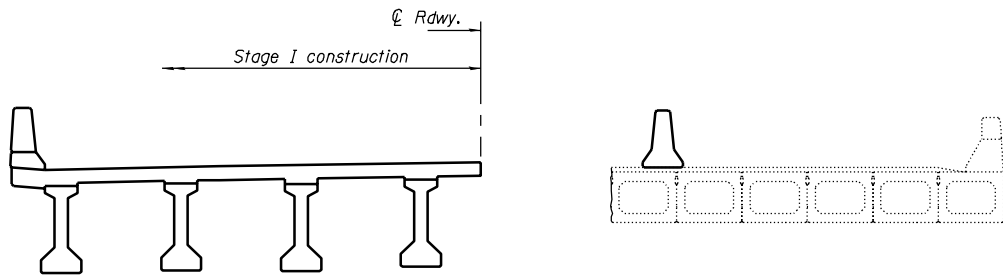
ROUTE NO.	SECTION	COUNTY	TOTAL SHEETS	SHEET NO.
FAP 332	47BR-2	VERMILION	68	21
FED. ROAD DIST. NO. 7	ILLINOIS	FED. AID PROJECT		

SHEET NO. 2
23 SHEETS

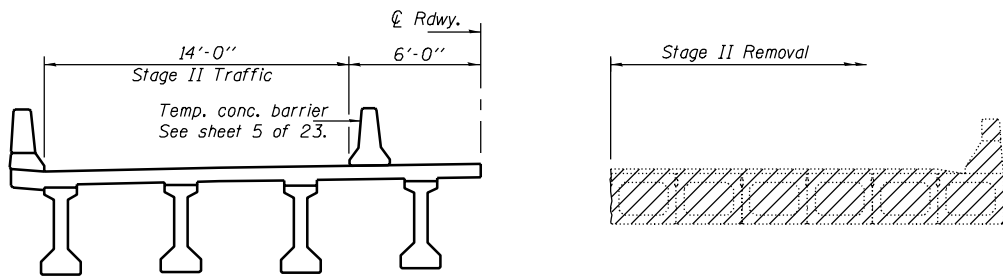
Contract #70420



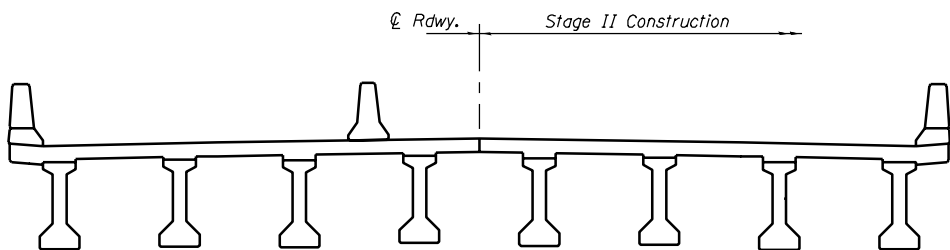
STAGE I REMOVAL



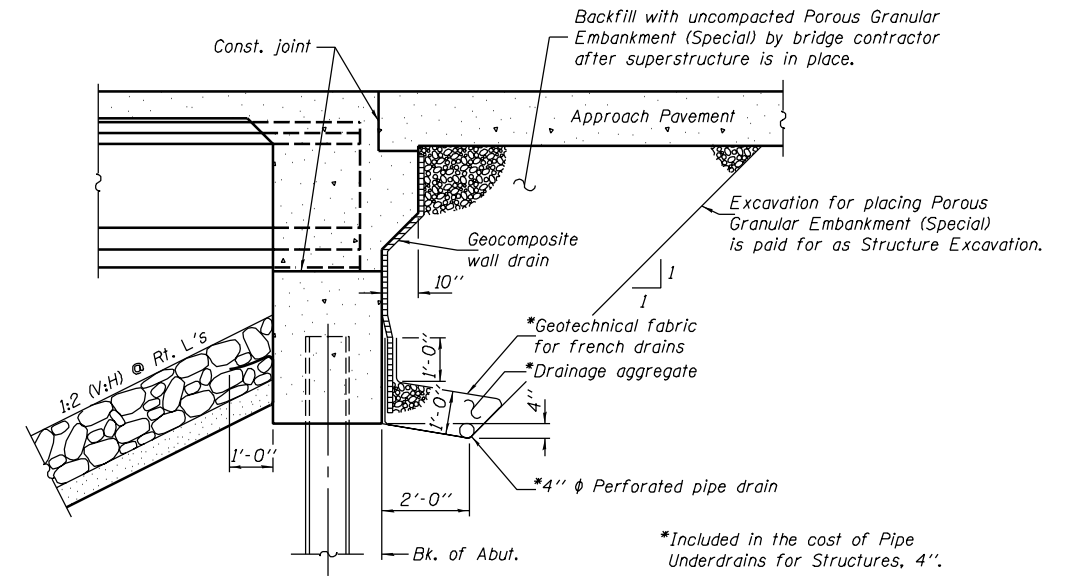
STAGE I CONSTRUCTION



STAGE II REMOVAL



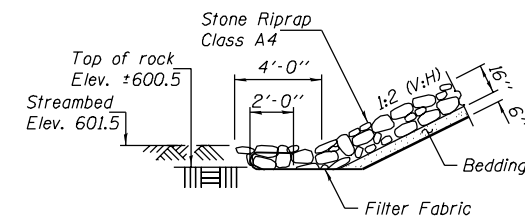
STAGE II CONSTRUCTION



SECTION THRU INTEGRAL ABUTMENT

(Horiz. dim. @ Rt. L's)

All drainage system components shall extend to 2'-0" from the end of each wingwall except an outlet pipe shall extend until intersecting with the side slopes. The pipes shall drain into concrete headwalls. The drainage details behind the abutment shall be omitted within the limits of the Temporary MSE wall. However, the drain pipe shall be placed through the reinforced soil mass of the Temporary MSE wall at the same elevation as designated in the detail. (See Art. 601.05 of the Standard Specifications and Highway Standard 601101).



STONE RIPRAP ANCHOR DETAIL

Notes: Hatched area indicates Removal of Existing Structures.
For quantity of Temporary Concrete Barriers see Roadway Plans.
All staging cross sections are looking north.

DESIGNED	D. P. Narielwala
CHECKED	S. M. Ryan
DRAWN	h.t. duong
CHECKED	DPN/SMR

August 4, 2006
EXAMINED *Thomas J. Damagala*
ENGINEER OF BRIDGE DESIGN
PASSED *Ralph E. Anderson*
ENGINEER OF BRIDGES AND STRUCTURES

GENERAL DATA &
STAGE CONSTRUCTION DETAILS
F.A.P. RTE. 332 - SEC. 47BR-2
VERMILION COUNTY
STATION 2522+72.00
STRUCTURE NO. 092-0206