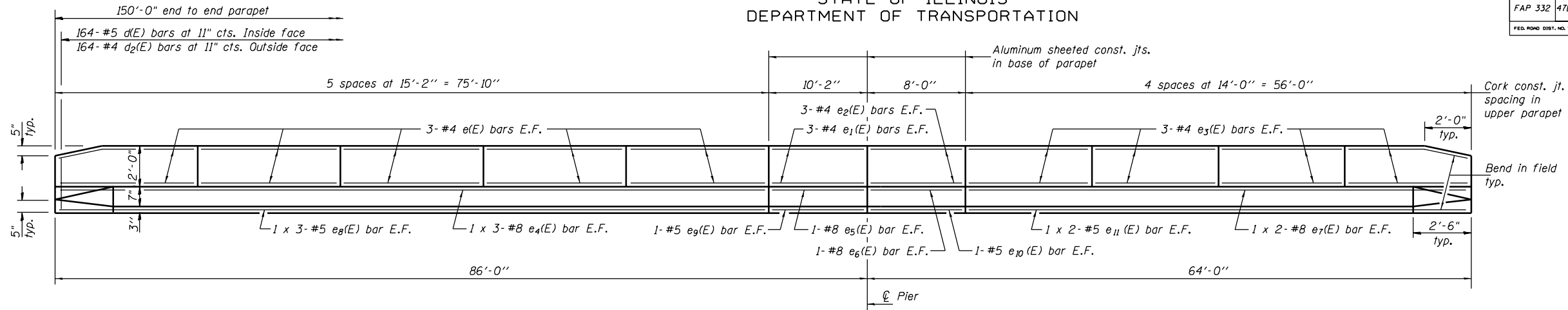


STATE OF ILLINOIS
DEPARTMENT OF TRANSPORTATION

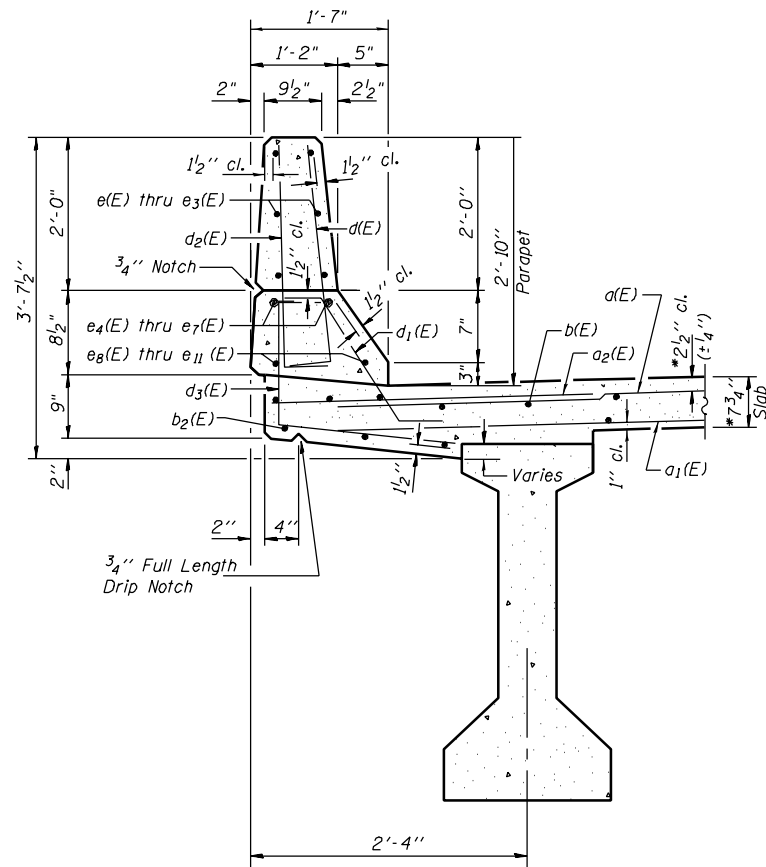
ROUTE NO.	SECTION	COUNTY	TOTAL SHEETS	SHEET NO.
FAP 332	47BR-2	VERMILION	68	29
FED. ROAD DIST. NO. 7	ILLINOIS	FED. AID PROJECT		

SHEET NO. 10
23 SHEETS

Contract #70420



INSIDE ELEVATION OF PARAPET



SECTION THRU PARAPET

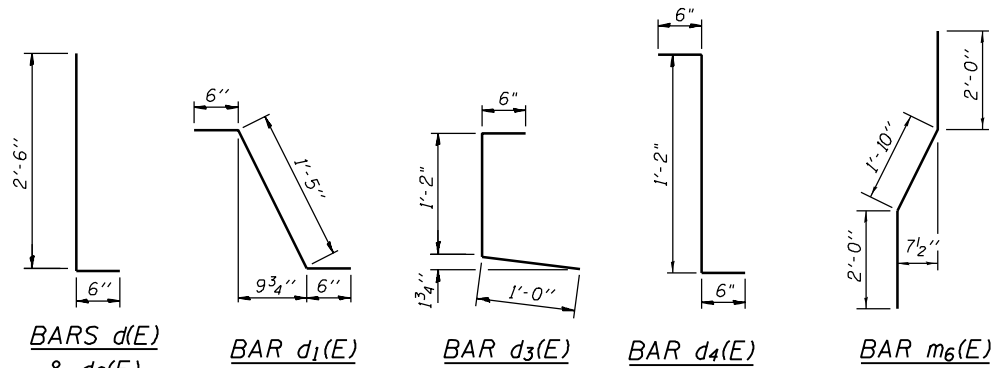
*Prior to grinding.

DESIGNED	D. P. Narielwala
CHECKED	S. M. Ryan
DRAWN	h.t. duong
CHECKED	DPN/SMR

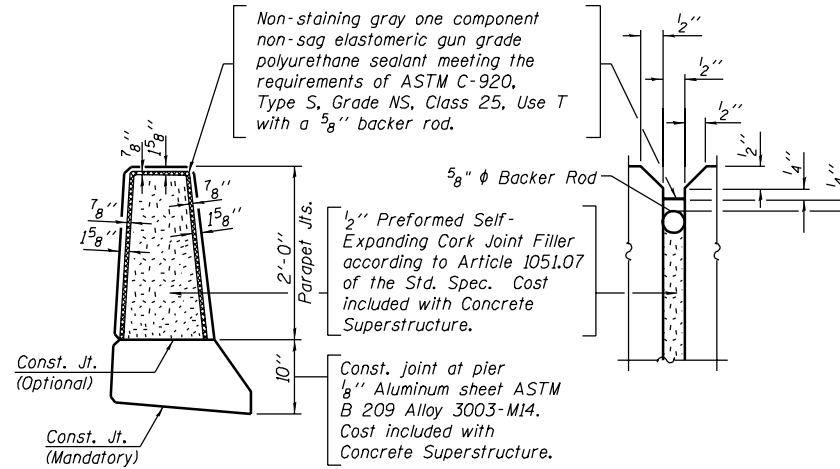
August 4, 2006
EXAMINED *Thomas J. Damagala*
ENGINEER OF BRIDGE DESIGN
PASSED *Ralph E. Anderson*
ENGINEER OF BRIDGES AND STRUCTURES

MIN. BAR LAPS

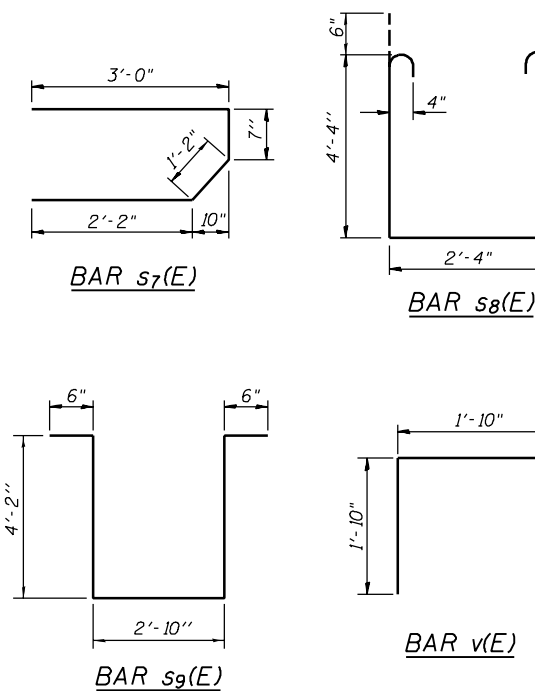
- #4 bar = 1'-4"
- #5 bar = 1'-8"
- #8 bar = 3'-5"



Non-staining gray one component non-sag elastomeric gun grade polyurethane sealant meeting the requirements of ASTM C-920, Type S, Grade NS, Class 25, Use T with a 5/8" backer rod.



PARAPET JOINT DETAILS



SUPERSTRUCTURE
BILL OF MATERIAL

Bar	No.	Size	Length	Shape
d(E)	480	#5	21'-1"	—
a1(E)	360	#5	20'-3"	—
a2(E)	480	#6	6'-0"	—
a3(E)	8	#5	22'-5"	—
b(E)	350	#5	31'-4"	—
b1(E)	66	#5	35'-10"	—
b2(E)	300	#5	26'-4"	—
d(E)	328	#5	3'-0"	—
d1(E)	316	#5	2'-5"	—
d2(E)	328	#4	3'-0"	—
d3(E)	328	#4	2'-8"	—
d4(E)	12	#5	2'-2"	—
e(E)	60	#4	14'-11"	—
e1(E)	12	#4	9'-11"	—
e2(E)	12	#4	7'-9"	—
e3(E)	48	#4	13'-9"	—
e4(E)	12	#8	27'-6"	—
e5(E)	4	#8	9'-11"	—
e6(E)	4	#8	7'-9"	—
e7(E)	8	#8	29'-8"	—
e8(E)	12	#5	26'-4"	—
e9(E)	4	#5	9'-11"	—
e10(E)	4	#5	7'-9"	—
e11(E)	8	#5	28'-9"	—
m(E)	8	#6	21'-7"	—
m1(E)	12	#6	22'-11"	—
m2(E)	32	#6	7'-10"	—
m3(E)	24	#6	3'-6"	—
m4(E)	4	#6	1'-1"	—
m5(E)	8	#6	1'-7"	—
m6(E)	8	#8	5'-10"	—
m7(E)	24	#6	4'-6"	—
m8(E)	8	#6	2'-3"	—
s7(E)	80	#5	6'-11"	—
s8(E)	84	#4	12'-0"	—
s9(E)	36	#4	12'-2"	—
v(E)	84	#5	3'-8"	—
Reinforcement Bars, Epoxy Coated		Lbs.	54810	
Concrete Superstructure		Cu. Yds.	244.2	

Reinforcement bars designated (E) shall be epoxy coated.
Bars indicated thus 1 x 3-#8 etc. indicates 1 line of bars with 3 lengths per line.

SUPERSTRUCTURE DETAILS
F.A.P. RTE. 332 - SEC. 47BR-2
VERMILION COUNTY
STATION 2522+72.00
STRUCTURE NO. 092-0206