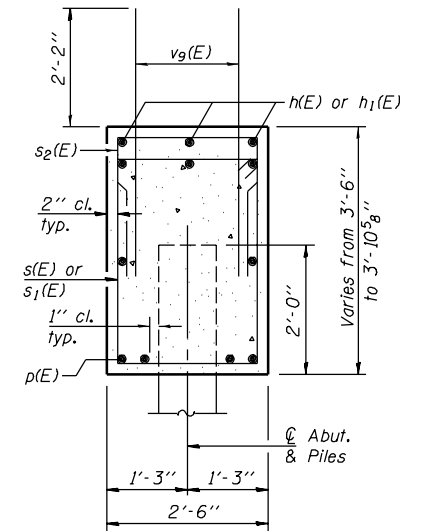
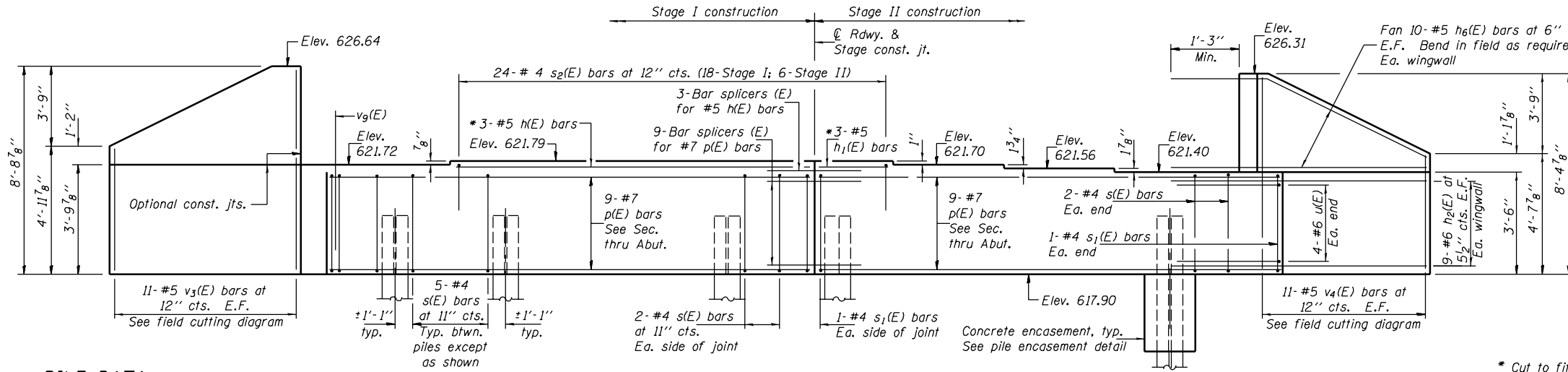


STATE OF ILLINOIS  
DEPARTMENT OF TRANSPORTATION

ROUTE NO.	SECTION	COUNTY	TOTAL SHEETS	SHEET NO.	SHEET NO. 19 23 SHEETS
FAP 332	47BR-2	VERMILION	68	38	
FED. ROAD DIST. NO. 7	ILLINOIS	FED. AID PROJECT-			

Contract #70420

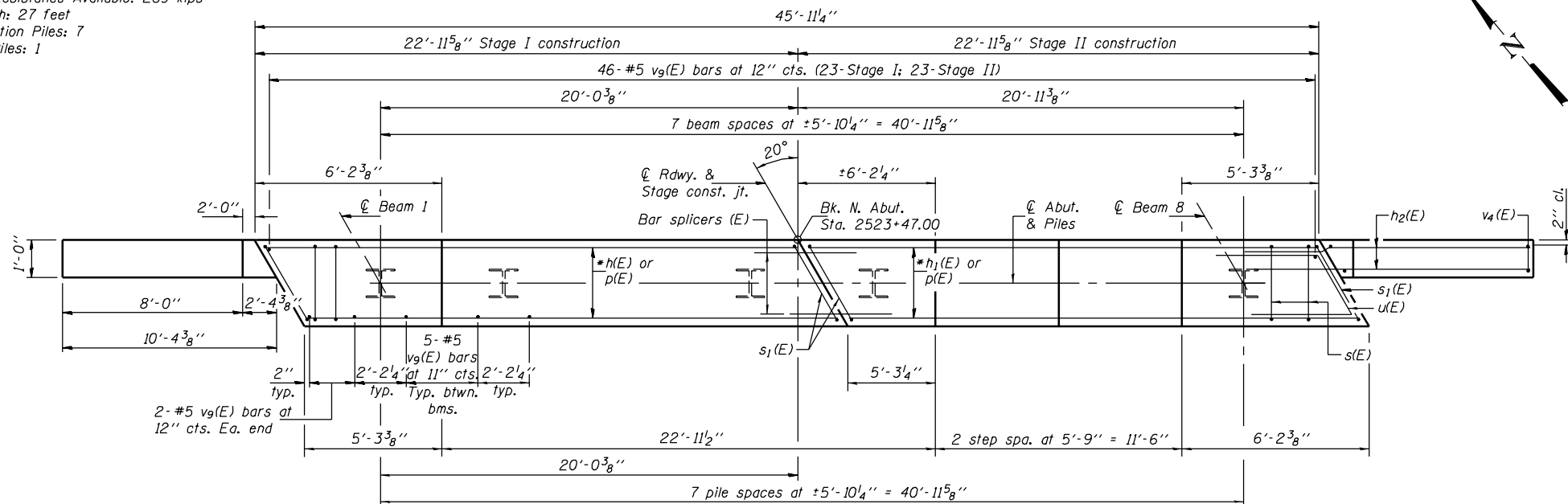


SEC. THRU ABUT.

**PILE DATA**

Type: Steel HP12x53 w/pile shoes  
Nominal Required Bearing: 418 kips  
Factored Resistance Available: 209 kips  
Est. Length: 27 feet  
No. Production Piles: 7  
No. Test Piles: 1

**ELEVATION**  
(Looking north)



**PLAN**

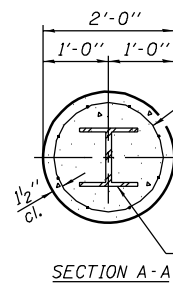
**BILL OF MATERIAL**

Bar	No.	Size	Length	Shape
h(E)	3	#5	17'-4"	—
h <sub>1</sub> (E)	3	#5	5'-10"	—
h <sub>2</sub> (E)	36	#6	13'-7"	—
h <sub>6</sub> (E)	40	#5	12'-3"	—
p(E)	18	#7	22'-7"	—
s(E)	38	#4	11'-5"	□
s <sub>1</sub> (E)	4	#4	11'-9"	□
s <sub>2</sub> (E)	24	#4	6'-8"	□
u(E)	8	#6	9'-5"	△
v <sub>3</sub> (E)	11	#5	12'-5"	—
v <sub>4</sub> (E)	11	#5	13'-1"	—
v <sub>9</sub> (E)	85	#5	4'-4"	—
Concrete Structures		Cu. Yd.	210	
Reinforcement Bars, Epoxy Coated		Pound	3370	
Furnishing Steel Pile HP12x53		Foot	189	
Driving Piles		Foot	189	
Test Pile Steel HP12x53		Each	1	
Pile Shoes		Each	8	

Notes: Pour steps monolithically with cap.  
Reinforcement bars designated (E) shall be epoxy coated.  
For bar splicer details, see sheet 21 of 23.

DESIGNED	D. P. Narielwala
CHECKED	S. M. Ryan
DRAWN	h.t. duong
CHECKED	DPN/SMR

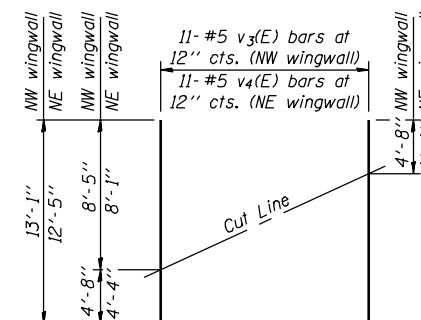
August 4, 2006  
EXAMINED *Thomas J. Damagala*  
PASSED *Ralph E. Anderson*  
ENGINEER OF BRIDGES AND STRUCTURES



Welded wire fabric 6 x 6-W4.0 x W4.0 weighing 58#/100 sq. ft. The cost of Excavation, Concrete Encasement and Reinforcement is included with Furnishing Piles. Forms for Encasement may be omitted when soil conditions permit.

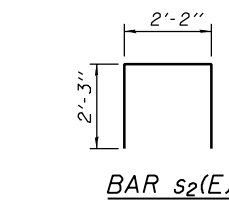
SECTION A-A  
HP12x53

**PILE ENCASEMENT DETAIL**

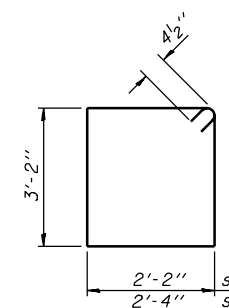


**FIELD CUTTING DIAGRAM**

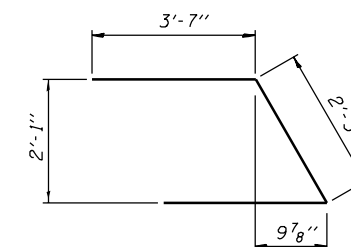
Order v<sub>3</sub>(E) & v<sub>4</sub>(E) bars full length. Cut as shown and use remainder of bars in opposite face.



**BAR s<sub>2</sub>(E)**



**BARS s(E) & s<sub>1</sub>(E)**



**BAR u(E)**

**NORTH ABUTMENT**  
F.A.P. RTE. 332 - SEC. 47BR-2  
VERMILION COUNTY  
STATION 2522+72.00  
STRUCTURE NO. 092-0206