




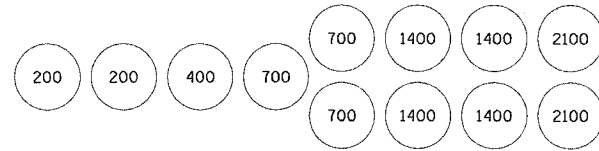


F.A.P. RTE.	SECTION	COUNTY	TOTAL SHEETS	SHEET NO.
817	8BR-2	WASHINGTON	52	14
STA. 22+20		TO STA. 28+20		
FED. ROAD DIST. NO.		ILLINOIS	FED. AID PROJECT	

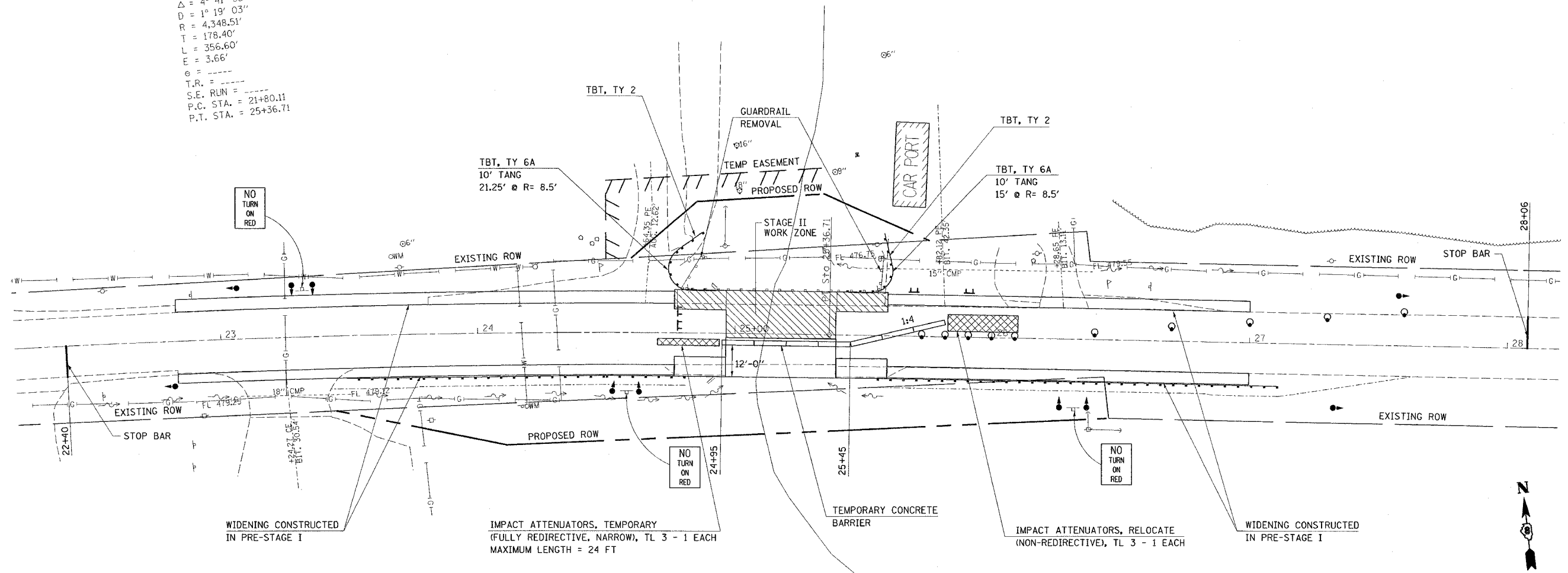
LEGEND

-  IMPACT ATTENUATOR
-  TEMPORARY CONCRETE BARRIER
-  BARRELS OR BARRICADES WITH STEADY BURNING LIGHT
-  TEMPORARY BRIDGE TRAFFIC SIGNALS
-  TYPE III BARRICADE



SAND BARREL LAYOUT
(IF OPTION USED)

EXIST. CURVE C1
 PI STA. = 23+58.51
 $\Delta = 4^\circ 41' 55''$ (RT)
 $D = 1^\circ 19' 03''$
 $R = 4,348.51'$
 $T = 178.40'$
 $L = 356.60'$
 $E = 3.66'$
 $\theta = \dots$
 $T.R. = \dots$
 $S.E. RUN = \dots$
 $P.C. STA. = 21+80.11$
 $P.T. STA. = 25+36.71$



SEQUENCE OF CONSTRUCTION:

- REMOVE 150 FT AND RELOCATE 50 FT OF TEMPORARY CONCRETE BARRIER.
- RELOCATE 1 EACH IMPACT ATTENUATORS (NON-REDIRECTIVE) AND PLACE 1 EACH IMPACT ATTENUATORS (FULLY REDIRECTIVE, NARROW) WITH A MAXIMUM LENGTH OF 24 FT.
- SEE STANDARD 701321 FOR DETAILS NOT SHOWN ON PLANS.
- PERFORM ALL NECESSARY BRIDGE WORK IN STAGE II WORK ZONE.
- REMOVE EXISTING GUARDRAIL ON NORTH SIDE AND REPLACE WITH PROPOSED TBT TYPE 6A, AND TBT, TYPE 2 TANGENT IN NW AND NE QUADRANTS



REVISIONS	
NAME	DATE

ILLINOIS DEPARTMENT OF TRANSPORTATION
STAGE CONSTRUCTION
STAGE II
 FAP ROUTE 817
 SECTION 8BR-2
 WASHINGTON COUNTY
 SN 095-0010

PLOT DATE = 7/19/2006
 PLOT SCALE = 1" = 20'
 PLOT USER = SKW
 USER NAME = SKW