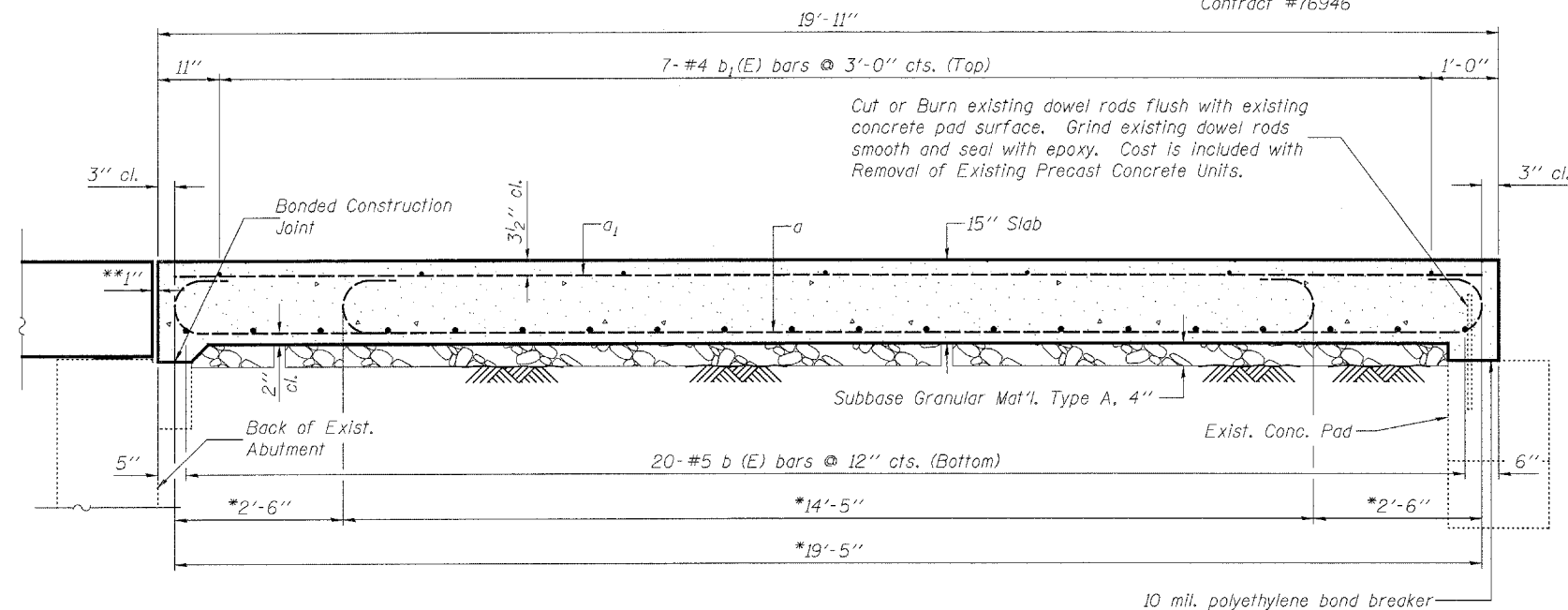
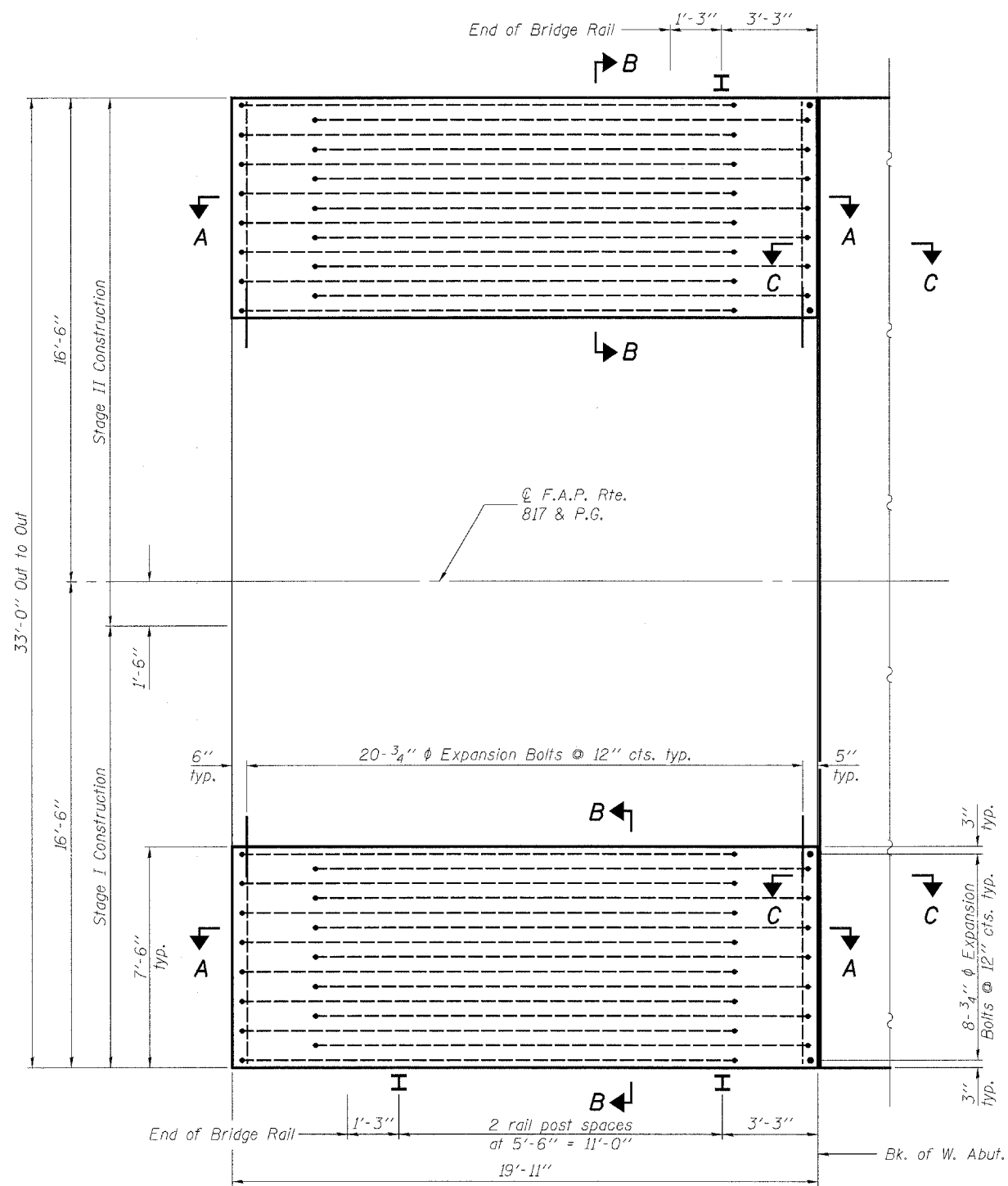


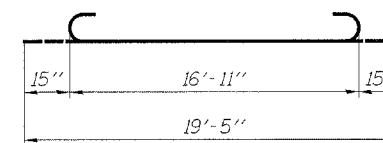
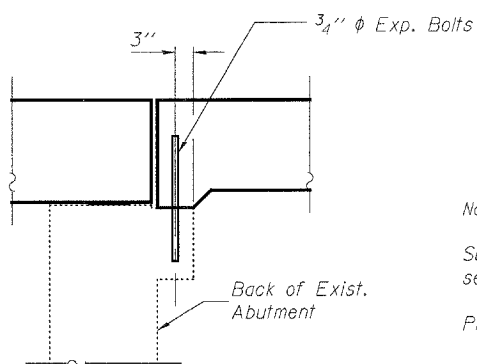
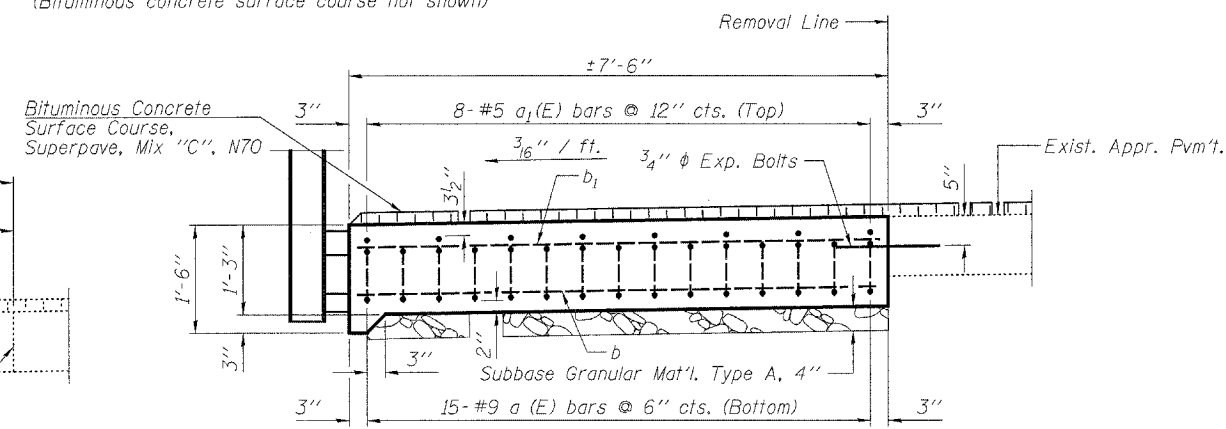
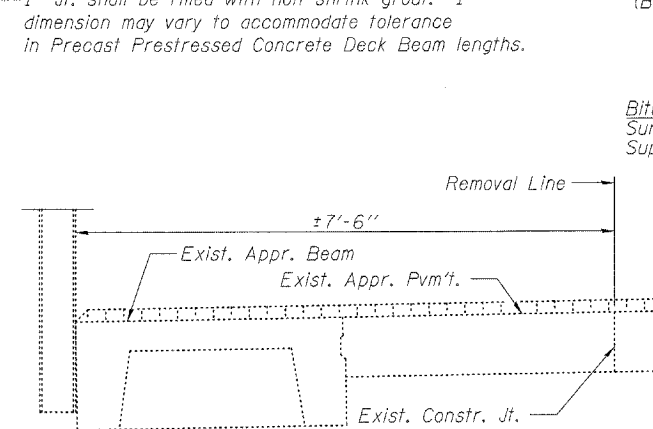
STATE OF ILLINOIS
DEPARTMENT OF TRANSPORTATION

ROUTE NO.	SECTION	COUNTY	TOTAL SHEETS	SHEET NO.	SHEET NO. 5 10 SHEETS
F.A.P. 817	8BR-2, 8BR-3	WASHINGTON	52	24	
FED. ROAD DIST. NO. 7	ILLINOIS	FED. AID PROJECT			

Contract #76946



* Stagger No. 9 a bars as shown on plan.
**1" Jt. shall be filled with non-shrink grout. 1" dimension may vary to accommodate tolerance in Precast Prestressed Concrete Deck Beam lengths.



BAR LIST

Bar	No.	Size	Length	Shape
a(E)	60	#9	19'-5"	U
a ₁ (E)	32	#5	19'-5"	—
b(E)	80	#5	7'-3"	—
b ₁ (E)	28	#4	7'-3"	—

BILL OF MATERIAL

Item	Unit	Total
Bridge Approach Pavement (Special)	Sq. Yd.	66
Concrete Removal	Cu. Yd.	9.2
Expansion Bolts 3/4 Inch	Each	112
Removal of Existing Precast Concrete Units	Sq. Ft.	299

Notes:
For quantity of Bituminous Surface Removal and Bituminous Concrete Surface Course, Superpave, Mix "C", N70 on the bridge approach pavement, see roadway plans.
Removal of existing approach beams is included in Removal of Existing Precast Concrete Units.
Removal of existing approach pavement is included with Concrete Removal, Concrete Removal, Removal of Existing Precast Concrete Units and Bridge Approach Pavement (Special) shall occur during its respective stage construction and prior to placement of the new deck beams.
See Special Provisions for Bridge Approach Pavement (Special).
See sheet 4 of 10 for rail anchor device to be cast in approach beams.

BRIDGE APPROACH PAVEMENT (SPECIAL)
F.A.P. ROUTE 817 - SECTION 8BR-2
WASHINGTON COUNTY
STATION 25+18.00
STRUCTURE NO. 095-0010

DESIGNED	EML
CHECKED	NJM
DRAWN	EML
CHECKED	NJM

HORNER & SHIFRIN, INC.
ENGINEERS ■ ARCHITECTS ■ PLANNERS