

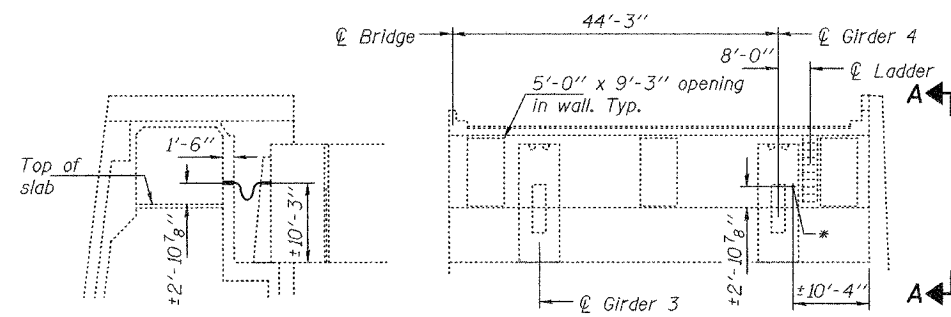
STATE OF ILLINOIS  
DEPARTMENT OF TRANSPORTATION

ROUTE NO.	SECTION	COUNTY	TOTAL SHEETS	SHEET NO.
***	**	***		20
FED. ROAD DIST. NO. 7	ILLINOIS	FED. AID PROJECT-		

Contract #76973

Sheet 4 of 4

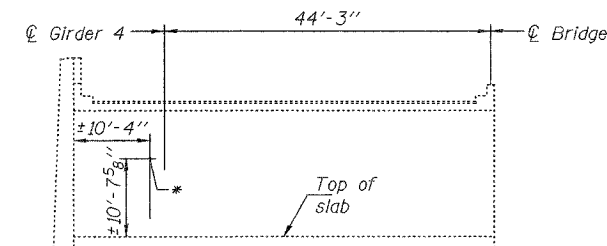
\*\*\* 55/70  
\*\* DIST 8 ITS 2006-2  
\*\*\* MADISON & ST. CLAIR & CITY OF ST. LOUIS, MO



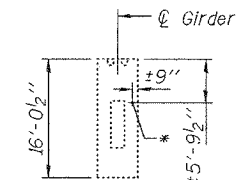
SEC A-A

ELEVATION OF WALL  
ADJACENT TO GIRDERS  
(Looking East)

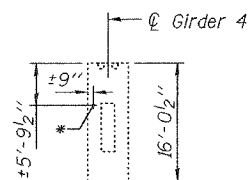
\* Approximate location  
of 3"Ø conduit hole.



ELEVATION OF WALL ADJACENT TO GIRDERS  
(Looking West)

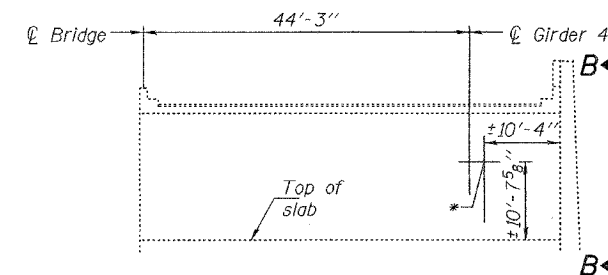


GIRDER ELEVATION  
(Looking East)

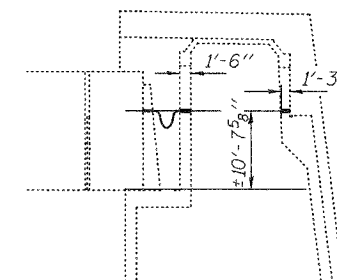


GIRDER ELEVATION  
(Looking West)

PIER 1

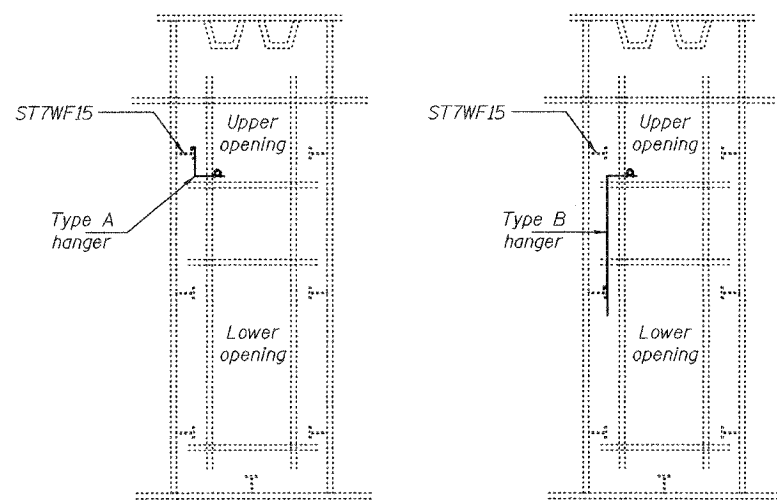


ELEVATION OF BACKWALL  
ADJACENT TO APPROACH SLAB  
(Looking East)

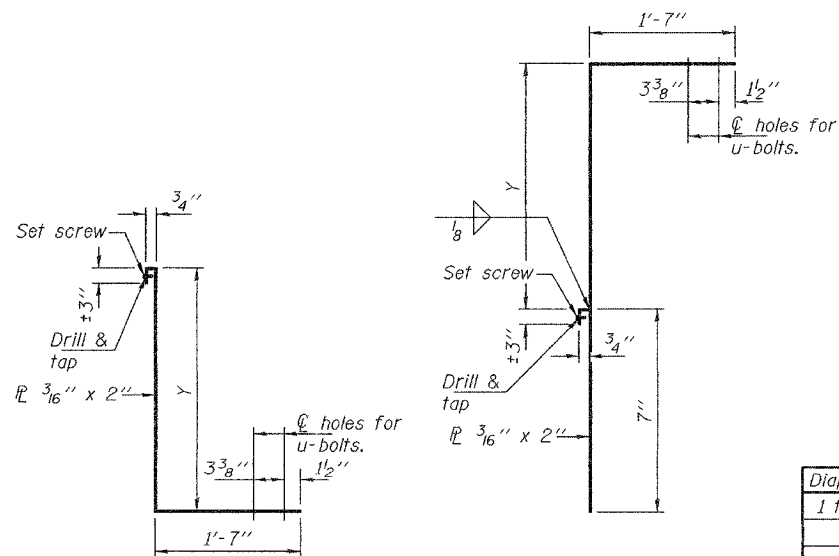


SEC B-B

PIER 6



ELEVATION AT DIAPHRAGMS  
(Looking West)



TYPE A  
(Est. no. req'd. = 348)

TYPE B  
(Est. no. req'd. = 90)

CONDUIT HANGERS

Notes:  
The conduit clamp u-bolts shall be either double nutted or lock nutted.  
All structural steel shall be AASHTO M-270 Grade 36 (galvanized).  
Set screw should be tightened onto the longitudinal stiffener with a flange thickness of 3/8".

Diaphragms & Stiffeners	Hanger Type	Y
1 thru 2, 146 thru 147	A	2'-8"
2 thru 47	A	1'-2"
47 thru 50	B	1'-8 1/2"
50 thru 62	B	8 1/2"
62 thru 88	A	1'-2"
88 thru 100	B	8 1/2"
100 thru 103	B	1'-8 1/2"
103 thru 146	A	1'-2"

DESIGNED	SJB
CHECKED	VHV
DRAWN	baliva
CHECKED	SJB VHV