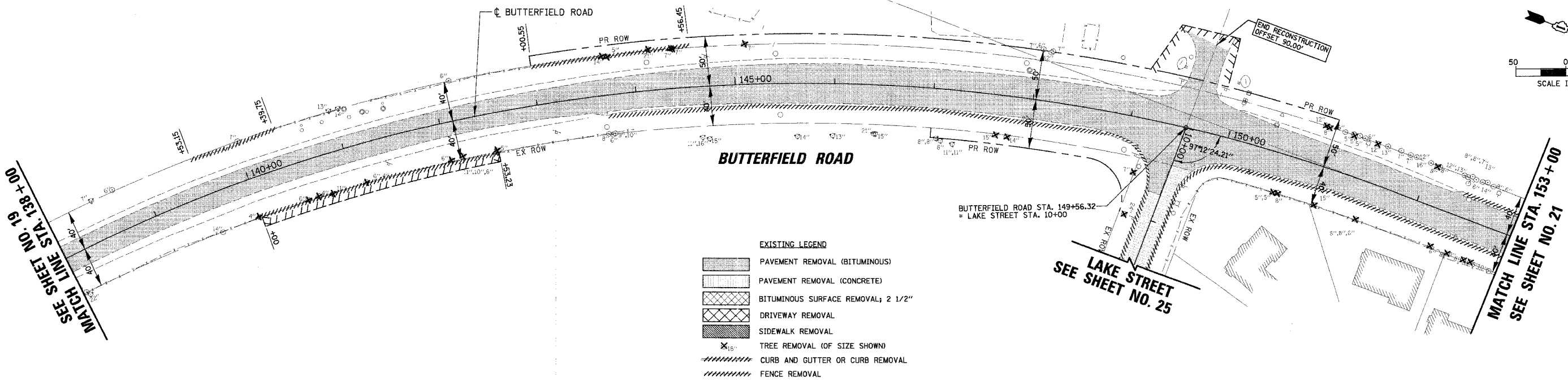
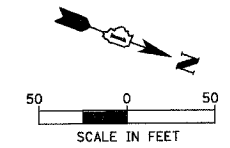
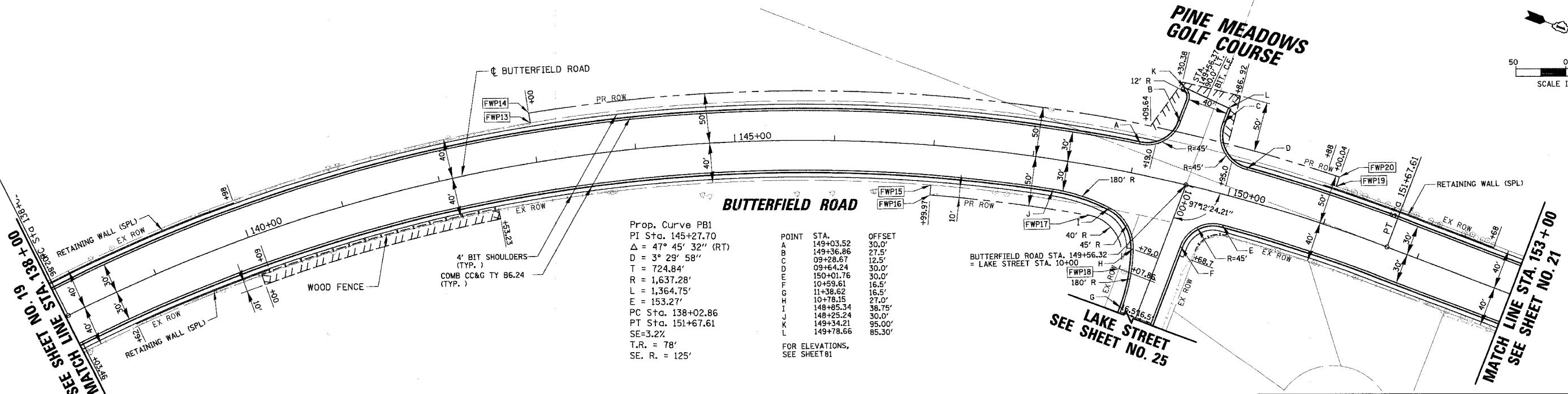


FAU	SECTION	COUNTY	TOTAL SHEET SHEETS	NO.
2647	99-00142-07-WR	LAKE	256	20
CONTRACT NO: 83815				
FED. ROAD DIST. NO. 1 ILLINOIS FED. AID PROJECT				



- EXISTING LEGEND**
- PAVEMENT REMOVAL (BITUMINOUS)
 - PAVEMENT REMOVAL (CONCRETE)
 - BITUMINOUS SURFACE REMOVAL; 2 1/2"
 - DRIVEWAY REMOVAL
 - SIDEWALK REMOVAL
 - TREE REMOVAL (OF SIZE SHOWN)
 - CURB AND GUTTER OR CURB REMOVAL
 - FENCE REMOVAL

EXISTING CONDITIONS



Prop. Curve PB1
 PI Sta. 145+27.70
 $\Delta = 47^\circ 45' 32''$ (RT)
 $D = 3^\circ 29' 58''$
 $T = 724.84'$
 $R = 1,637.28'$
 $L = 1,364.75'$
 $E = 153.27'$
 PC Sta. 138+02.86
 PT Sta. 151+67.61
 $SE = 3.27'$
 $T.R. = 78'$
 $SE. R. = 125'$

POINT	STA.	OFFSET
A	149+03.52	30.0'
B	149+36.86	27.5'
C	09+28.67	12.5'
D	09+64.24	30.0'
E	150+01.76	30.0'
F	10+59.61	16.5'
G	11+38.62	16.5'
H	10+78.15	27.0'
I	148+85.34	38.75'
J	148+25.24	30.0'
K	149+34.21	95.00'
L	149+78.66	85.30'

FOR ELEVATIONS, SEE SHEET 81

NOTE:
 DETECTABLE WARNING SIGNS SHALL BE PLACED IN SIDEWALK BEHIND DEPRESSED CONCRETE CURB AND GUTTER PER IDOT STANDARD.
 SEE MEDIAN DETAIL, SHEET NO. 88 AND IDOT STANDARD 606306 FOR TREATMENT OF ALL MEDIAN NOSES.

PROPOSED CONDITIONS

- PROPOSED LEGEND**
- EXISTING RIGHT-OF-WAY
 - PROPOSED RIGHT-OF-WAY
 - TEMPORARY EASEMENT
 - COMB CC&G (DEPRESSED)
 - TYPE A RAMP WITH DETECTABLE WARNINGS
 - FURNISH WITNESS POST (SEE SHEET 12 FOR TABLE)

REVISIONS	
NAME	DATE

ILLINOIS DEPARTMENT OF TRANSPORTATION
FAU 2647 - BUTTERFIELD ROAD
ROADWAY PLAN
BUTTERFIELD ROAD
STA. 138+00 TO STA. 153+00
 SCALE: 1:50
 DATE: 12/2/2005
 DRAWN BY: ELA/PMM
 CHECKED BY: BLL

N:\LIBERTY\199-385\CIVIL\99385.TRI
 N:\LIBERTY\199-389\CIVIL\99389_03.plt
 1:50
 12/2/2005