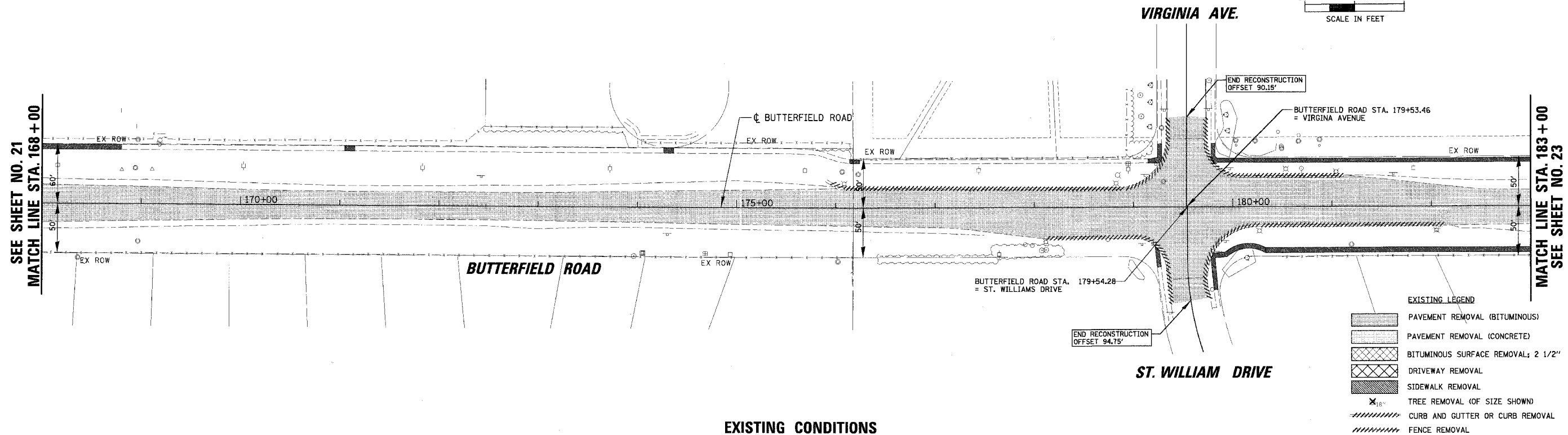
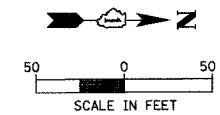


FAU	SECTION	COUNTY	TOTAL SHEETS	SHEET NO.
2647	99-00142-07-WR	LAKE	256	22
CONTRACT NO: 83815				
FED. ROAD DIST. NO. 1 ILLINOIS FED. AID PROJECT				

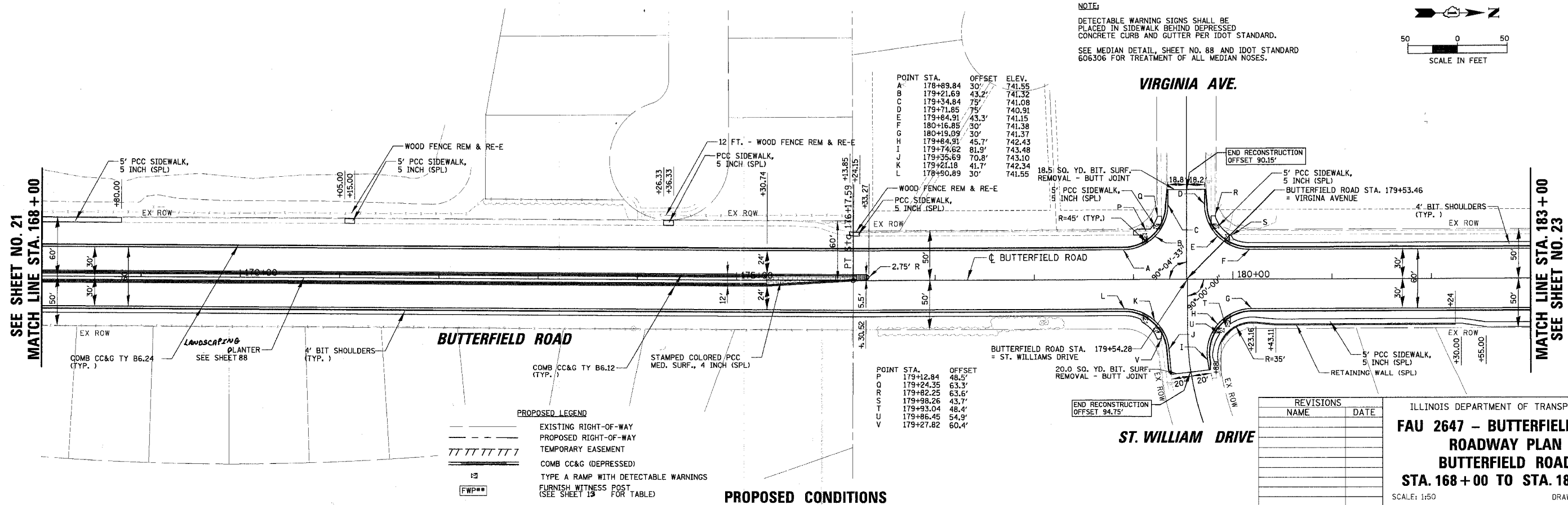
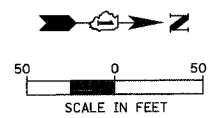


EXISTING LEGEND

- PAVEMENT REMOVAL (BITUMINOUS)
- PAVEMENT REMOVAL (CONCRETE)
- BITUMINOUS SURFACE REMOVAL; 2 1/2"
- DRIVEWAY REMOVAL
- SIDEWALK REMOVAL
- TREE REMOVAL (OF SIZE SHOWN)
- CURB AND GUTTER OR CURB REMOVAL
- FENCE REMOVAL

EXISTING CONDITIONS

NOTE:
 DETECTABLE WARNING SIGNS SHALL BE PLACED IN SIDEWALK BEHIND DEPRESSED CONCRETE CURB AND GUTTER PER IDOT STANDARD.
 SEE MEDIAN DETAIL, SHEET NO. 88 AND IDOT STANDARD 606306 FOR TREATMENT OF ALL MEDIAN NOSES.



POINT STA. OFFSET ELEV.

A	178+89.84	30'	741.55
B	179+21.69	43.2'	741.32
C	179+34.84	75'	741.08
D	179+71.85	75'	740.91
E	179+84.91	43.3'	741.15
F	180+16.85	30'	741.38
G	180+19.09	30'	741.37
H	179+84.91	45.7'	742.43
I	179+74.62	81.9'	743.48
J	179+35.69	70.8'	743.10
K	179+21.18	41.7'	742.34
L	179+90.89	30'	741.55

POINT STA. OFFSET

P	179+12.84	48.5'
Q	179+24.35	63.3'
R	179+82.25	63.6'
S	179+98.26	43.7'
T	179+93.04	48.4'
U	179+86.45	54.9'
V	179+27.82	60.4'

PROPOSED LEGEND

- EXISTING RIGHT-OF-WAY
- PROPOSED RIGHT-OF-WAY
- TEMPORARY EASEMENT
- COMB CC&G (DEPRESSED)
- TYPE A RAMP WITH DETECTABLE WARNINGS
- FURNISH WITNESS POST (SEE SHEET 13 FOR TABLE)

REVISIONS

NAME	DATE

ILLINOIS DEPARTMENT OF TRANSPORTATION
FAU 2647 - BUTTERFIELD ROAD ROADWAY PLAN
BUTTERFIELD ROAD
STA. 168+00 TO STA. 183+00
 SCALE: 1:50
 DATE: 12/2/2005
 DRAWN BY: ELA,PM
 CHECKED BY: BLL

N:\LIBERTYVILLE\99-389\CIVIL\99389.TRI
 N:\LIBERTYVILLE\99-389\CIVIL\99389_05.plt
 1:50
 12/2/2005