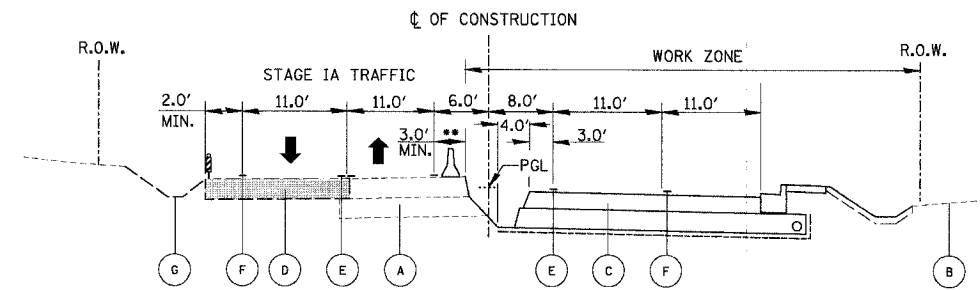
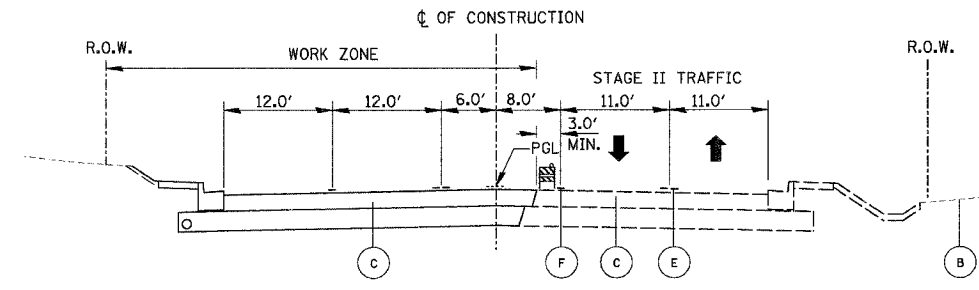


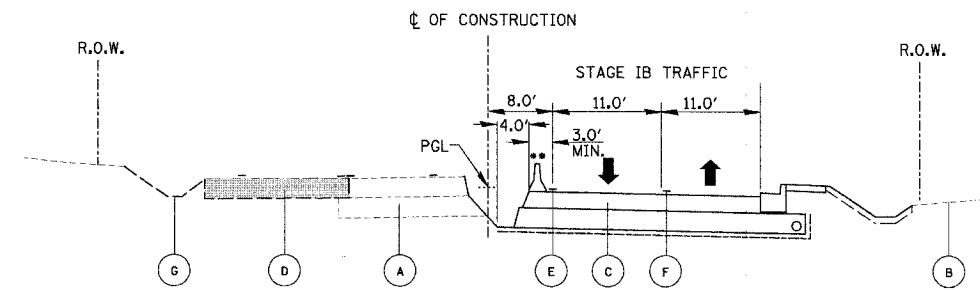
FAU	SECTION	COUNTY	TOTAL SHEETS	SHEET NO.
2647	99-00142-07-WR	LAKE	256	37
CONTRACT NO: 83815				
FED. ROAD DIST. NO. 1 ILLINOIS FED. AID PROJECT				



**PROPOSED TYPICAL RECONSTRUCTION STAGE IA
BUTTERFIELD ROAD**

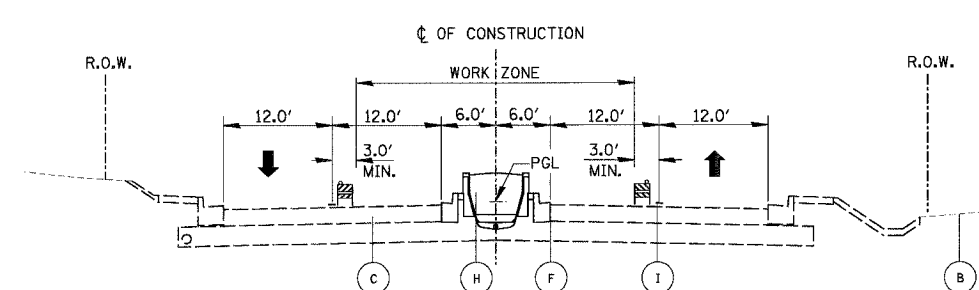


**PROPOSED TYPICAL RECONSTRUCTION STAGE II
BUTTERFIELD ROAD**



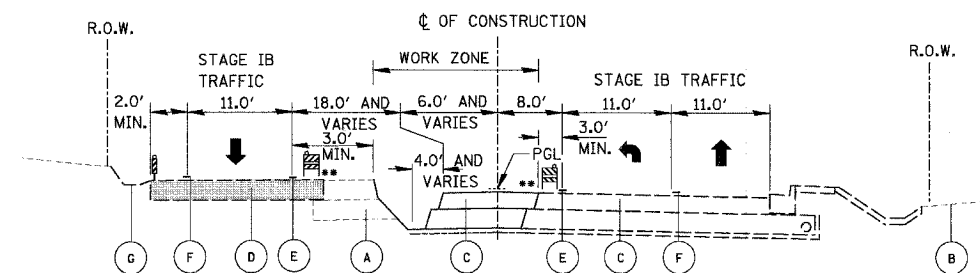
**PROPOSED TYPICAL RECONSTRUCTION STAGE IB
BUTTERFIELD ROAD**

STA. 112+20 TO STA 144+13
 STA. 152+45 TO STA 158+63
 STA. 167+63 TO STA 175+65
 STA. 180+95 TO STA 192+77
 STA. 196+50 TO STA 197+89



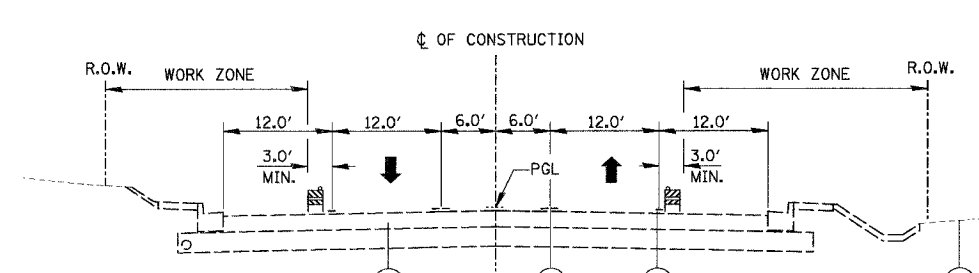
**PROPOSED TYPICAL RECONSTRUCTION STAGE III *
BUTTERFIELD ROAD**

STA. 167+50 TO STA. 175+15.70
 STA. 184+25 TO STA. 188+50
 STA. 191+65.31 TO STA. 200+35.00



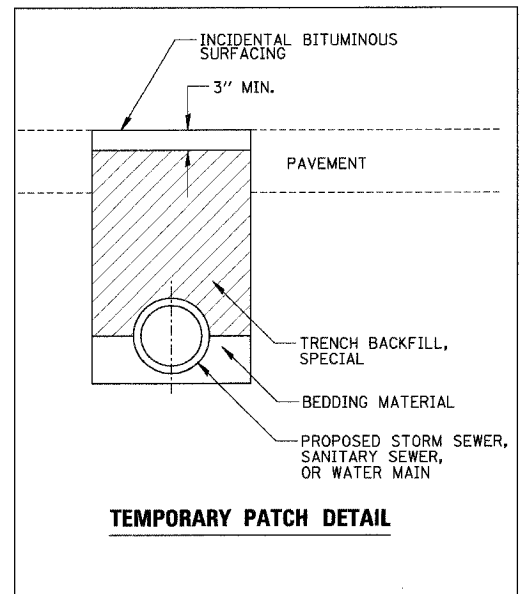
**PROPOSED TYPICAL RECONSTRUCTION STAGE IB
BUTTERFIELD ROAD**

STA. 144+13 TO STA 152+45
 STA. 158+63 TO STA 167+63
 STA. 175+65 TO STA 180+95
 STA. 192+77 TO STA 196+50
 STA. 197+89 TO STA 200+00



**PROPOSED TYPICAL RECONSTRUCTION STAGE III *
BUTTERFIELD ROAD**

* THE LANE CLOSURE SHALL ONLY BE IN EFFECT WHILE WORKERS ARE PRESENT IN OR NEAR THE CLOSED LANE. ALL TRAFFIC CONTROL DEVICES PERTAINING TO THE LANE CLOSURE WILL BE REMOVED FROM THE ROADWAY WHEN THE LANE CLOSURE IS NOT IN EFFECT.



- LEGEND**
- (A) EXISTING ROADWAY
 - (B) EXISTING GROUND
 - (C) PROPOSED ROADWAY
 - (D) TEMPORARY PAVEMENT SUPERPAVE
 - (E) TEMPORARY PAVEMENT MARKING - LINE, YELLOW
 - (F) TEMPORARY PAVEMENT MARKING - LINE, WHITE
 - (G) TEMPORARY DRAINAGE AND EROSION CONTROL
 - (H) CONCRETE MEDIAN OR LANDSCAPED MEDIAN
 - (I) SHORT TERM PAVEMENT MARKING
 - [Symbol] TYPE II BARRICADE OR WITH LIGHT
 - [Symbol] VERTICAL PANEL WITH LIGHT
 - [Symbol] TEMPORARY CONCRETE BARRIER WALL WITH MONODIRECTIONAL PRISMATIC BARRIER REFLECTORS

** TEMPORARY BARRIER WALL TO BE PLACED IN LIEU OF TYPE II BARRICADES WHERE ALL OF THE FOLLOWING CONDITIONS OCCUR, OR DIRECTED BY THE ENGINEER,

- SIDESLOPE STEEPER THAN 4:1, OR DROPOFF > 2', TO PROPOSED SUBGRADE/BOTTOM OF UNDERCUT.
- EDGE OF TRAVEL LANE CLOSER THAN 4 FEET TO TOP OF SIDESLOPE OR DROPOFF.

ALL TEMPORARY BARRIER WALL END TREATMENTS WILL HAVE ATTENUATING DEVICES.

REVISIONS	
NAME	DATE

ILLINOIS DEPARTMENT OF TRANSPORTATION
**FAU 2647 - BUTTERFIELD ROAD
 SUGGESTED MAINTENANCE OF
 TRAFFIC - TYPICAL SECTIONS**

SCALE: NONE
 DATE: 12/2/2005

DRAWN BY: PMM
 CHECKED BY: BLL