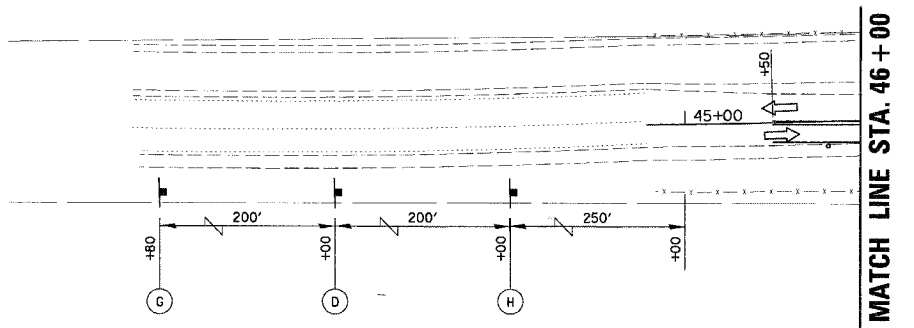
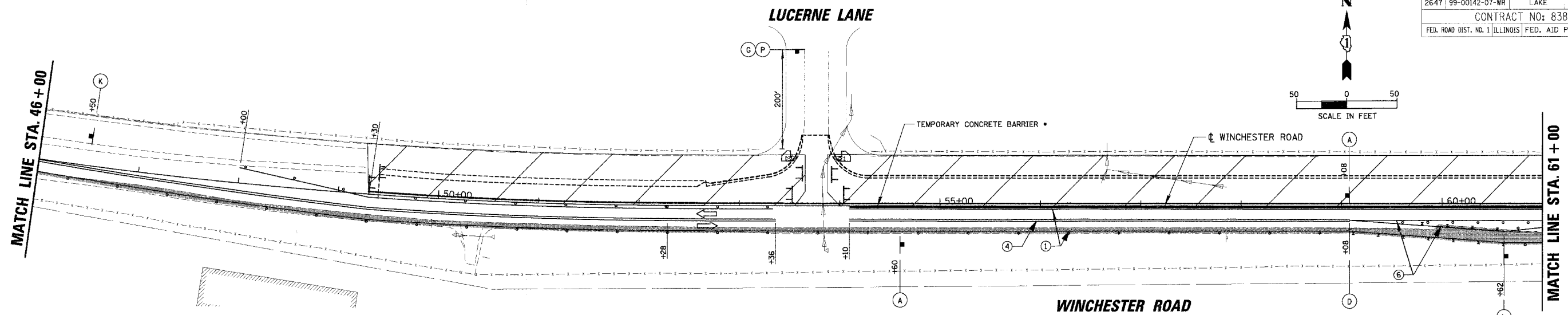
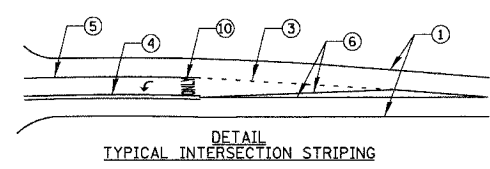
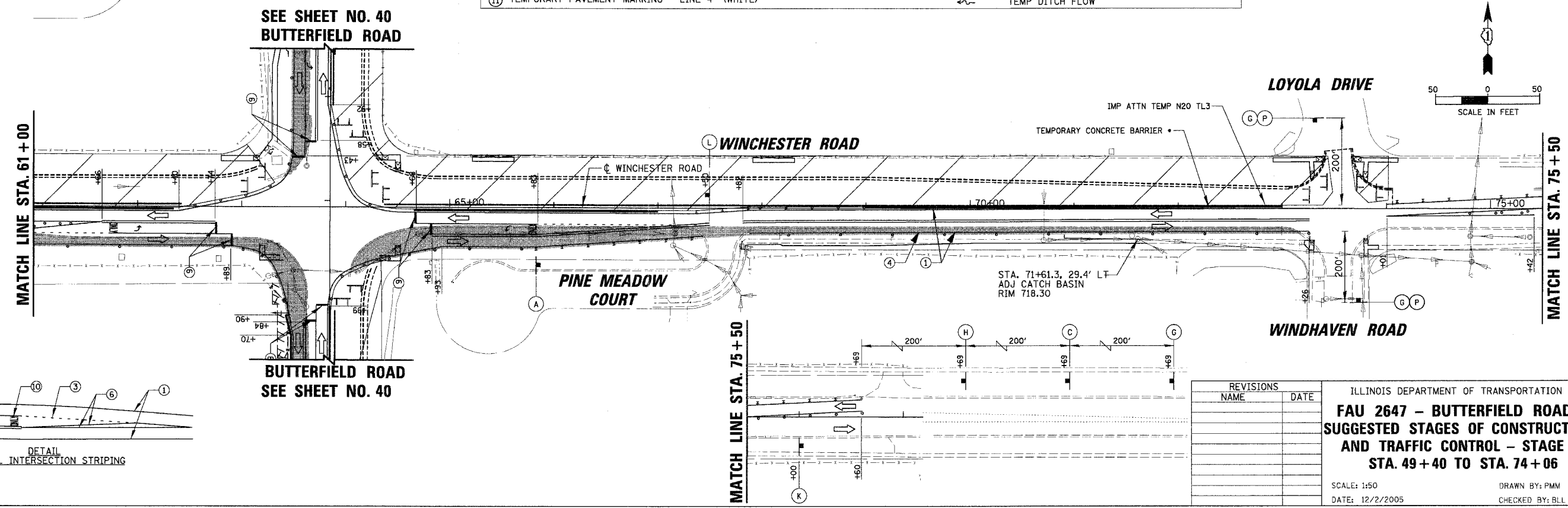


|                                                 |                |        |              |           |
|-------------------------------------------------|----------------|--------|--------------|-----------|
| FAU                                             | SECTION        | COUNTY | TOTAL SHEETS | SHEET NO. |
| 2647                                            | 99-00142-07-WR | LAKE   | 256          | 43        |
| CONTRACT NO: 83815                              |                |        |              |           |
| FED. ROAD DIST. NO. 1 ILLINOIS FED. AID PROJECT |                |        |              |           |



| LEGEND |                                                                    | LEGEND            |                                                       |
|--------|--------------------------------------------------------------------|-------------------|-------------------------------------------------------|
| ①      | TEMPORARY PAVEMENT MARKING - LINE 5" (WHITE)                       | [Hatched Box]     | WORK ZONE                                             |
| ②      | TEMPORARY PAVEMENT MARKING - LINE 4" (WHITE SKIP-DASH 30'-10')     | [Dotted Box]      | TEMPORARY PAVEMENT                                    |
| ③      | TEMPORARY PAVEMENT MARKING - LINE 6" (WHITE SKIP-DASH 6'-2')       | [Circle]          | TYPE II BARRICADE W/ LIGHT OR VERTICAL PANEL W/ LIGHT |
| ④      | TEMPORARY PAVEMENT MARKING - LINE 4" (DOUBLE YELLOW @ 11" C-C)     | [Dashed Line]     | TYPE II DIRECTIONAL BARRICADE W/ LIGHT                |
| ⑤      | TEMPORARY PAVEMENT MARKING - LINE 6" (WHITE)                       | [T-shaped Symbol] | TYPE III BARRICADE W/ LIGHTS                          |
| ⑥      | TEMPORARY PAVEMENT MARKING - LINE 4" (YELLOW)                      | [Arrow]           | WORK ZONE SIGN                                        |
| ⑦      | TEMPORARY PAVEMENT MARKING - LINE 12" (YELLOW DIAGONALS @ 20' C-C) | [Arrow]           | TRAFFIC FLOW                                          |
| ⑧      | TEMPORARY PAVEMENT MARKING - LINE 12" (WHITE DIAGONALS @ 10' C-C)  | [Arrow]           | ARROW BOARD                                           |
| ⑨      | TEMPORARY PAVEMENT MARKING - LINE 4" (WHITE)                       | [Dashed Line]     | LIMIT OF PROPOSED PAVEMENT INSTALLED PER STAGE        |
| ⑩      | TEMPORARY PAVEMENT MARKING - LETTERS AND SYMBOLS (WHITE)           | [Wavy Line]       | TEMP DITCH FLOW                                       |
| ⑪      | TEMPORARY PAVEMENT MARKING - LINE 4" (WHITE)                       |                   |                                                       |

- TEMPORARY BARRIER WALL TO BE PLACED IN LIEU OF TYPE II BARRICADES WHERE ALL OF THE FOLLOWING CONDITIONS OCCUR, OR DIRECTED BY THE ENGINEER.
  - 1. SIDESLOPE STEEPER THAN 4:1, OR DROPOFF > 2', TO PROPOSED SUBGRADE/BOTTOM OF UNDERCUT.
  - 2. EDGE OF TRAVEL LANE CLOSER THAN 4 FEET TO TOP OF SIDESLOPE OR DROPOFF.
- ALL TEMPORARY BARRIER WALL END TREATMENTS WILL HAVE ATTENUATING DEVICES AS SHOWN OR AS DIRECTED BY THE ENGINEER.



| REVISIONS |      |
|-----------|------|
| NAME      | DATE |
|           |      |
|           |      |
|           |      |
|           |      |
|           |      |

ILLINOIS DEPARTMENT OF TRANSPORTATION  
**FAU 2647 - BUTTERFIELD ROAD**  
**SUGGESTED STAGES OF CONSTRUCTION**  
**AND TRAFFIC CONTROL - STAGE IA**  
**STA. 49+40 TO STA. 74+06**

SCALE: 1:50  
DATE: 12/2/2005  
DRAWN BY: PMM  
CHECKED BY: BLL

150  
12/2/2005  
N:\LIBERTYVILLE\99-389\CIVIL\99389.TBL  
N:\LIBERTYVILLE\99-389\CIVIL\99389.IA\_04.mof