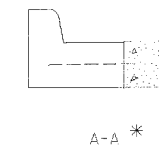
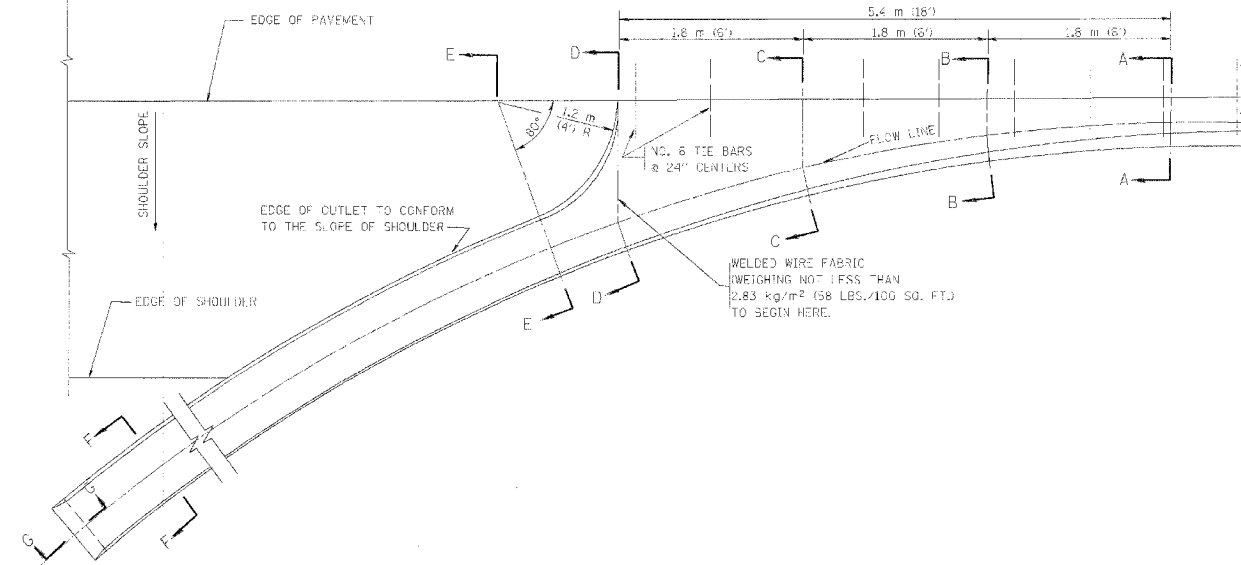
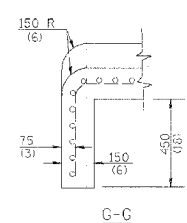
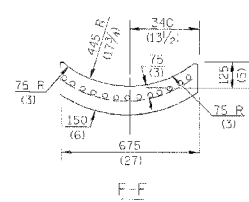
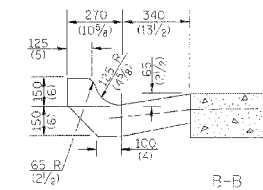
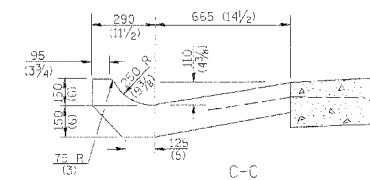
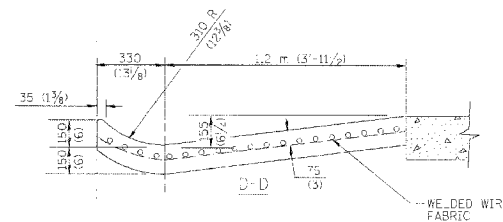
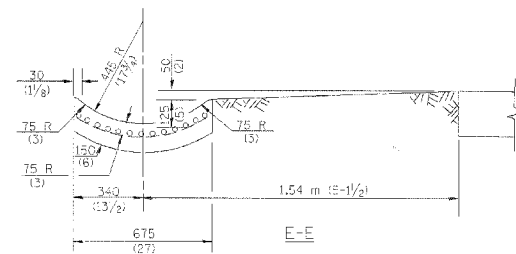


APPLICABLE TO IL RTE 137 ONLY

P.L. ETC.	SECTION	COUNTY	TOTAL SHEETS	SHEET NO.
	2647 99-00142-07-WR	LAKE	256	129
CONTRACT NO: 83815				
FED. ROAD DIST. NO. *	DISTRICTS	FED. AID PROJECT		



* DIMENSIONS OF THE CURB & GUTTER AT SECTION A-A ARE SHOWN ON STATE STANDARD 60600. FOR DETAILS OF GUTTER FOR CONCRETE CURB & CUTTER, TYPE B 15.60 (B-6.24) SEE STATE STANDARD 606006.



GENERAL NOTES

GUTTER OUTLET SHALL BE TIED TO THE PAVEMENT IN ACCORDANCE WITH DETAILS FOR LONGITUDINAL CONSTRUCTION JOINT SHOWN ON STANDARD 420001.

TIE BARS SHALL BE NO. 20 (NO. 6) AT 600 (24) CENTERS UNLESS OTHERWISE SHOWN.

IF THE AVERAGE GRADE OF PAVEMENT FOR THE DISTANCE FROM SECTION A-A TO D-D EXCEEDS 2%, THIS DISTANCE SHALL BE INCREASED 1.8 m (6') FOR EACH 1% INCREASE IN GRADE.

QUANTITIES

FOR SECTION A-A TO E-E AND CURBAIN WALL =
 0.36 m³ (1.25 CU. YDS.) CLASS S1 CONCRETE (OUTLET) FOR 225 (9) PAVT.
 0.97 m³ (1.27 CU. YDS.) CLASS S1 CONCRETE (OUTLET) FOR 250 (10) PAVT.
 FOR SECTION F-F =
 0.03 m³ (0.3-5 CU. YDS.) CLASS S1 CONCRETE PER m (fft.).

A.L. DIMENSIONS ARE IN MILLIMETERS (INCHES) UNLESS OTHERWISE SHOWN.

ILLINOIS DEPARTMENT OF TRANSPORTATION

OUTLET FOR CONCRETE CURB AND GUTTER

REVISIONS	
NAME	DATE
M. DE YONG	8/4/86
R. SHAH	09/03/94
R. SHAH	10/25/94
E. GOMEZ	12/21/00

SCALE: NONE
 DATE 10/18/2002

DRAWN BY
 CHECKED BY
 ED600-01 (B0-03)
 REVISION DATE: 12/21/00