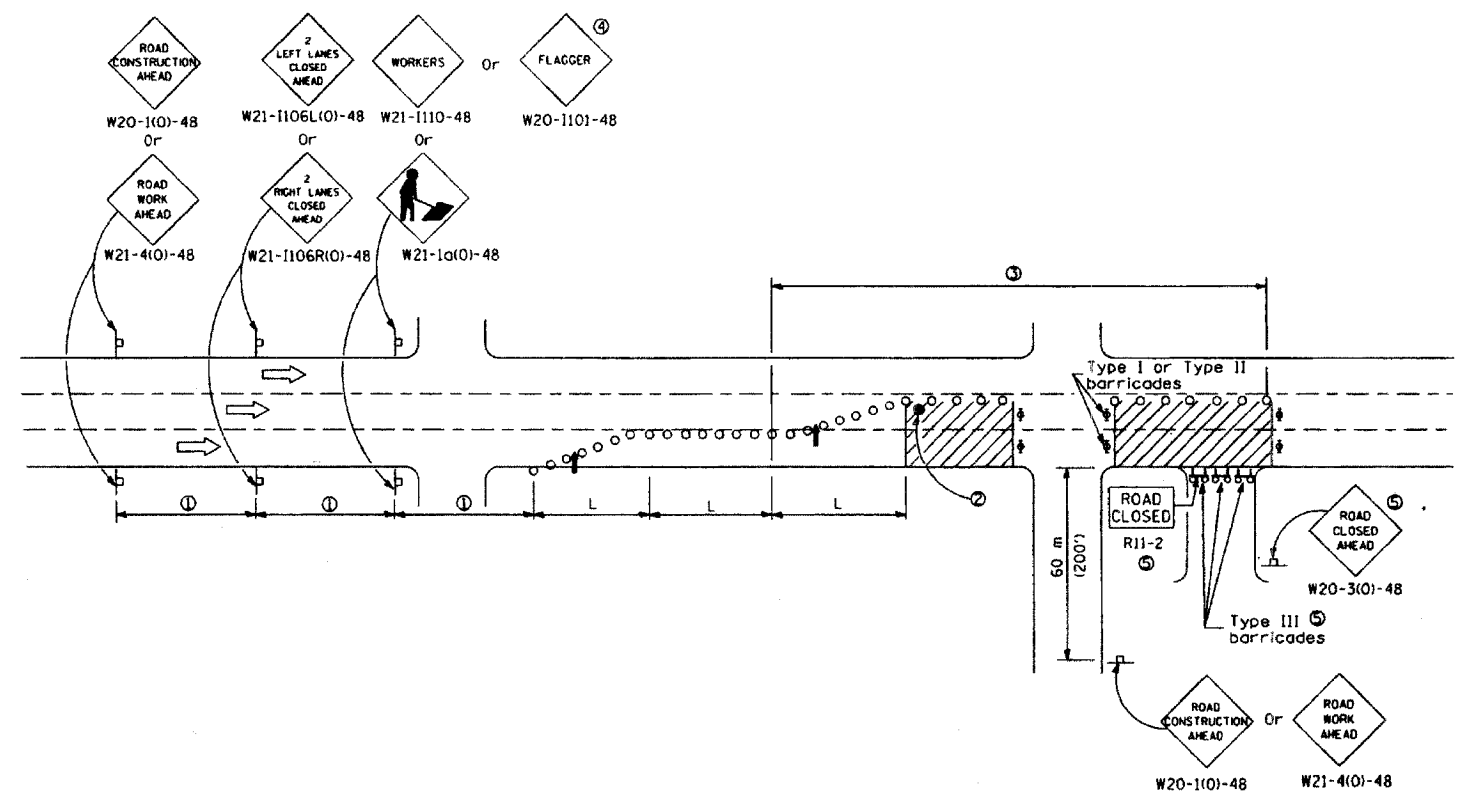


FAP RTE.	SECTION	COUNTY	TOTAL SHEETS	SHEET NO.
348	04-00040-00-LS	COOK	31	18
F.H.W.A. REG.	ILLINOIS	PROJECT:	F-0348(02B)	
CONTRACT NUMBER 83863				



All dimensions are in millimeters (inches) unless otherwise shown.

URBAN LANE CLOSURE,
MULTILANE, 1W OR 2W WITH
NONTRAVERSABLE MEDIAN
(Sheet 2 of 2)

STANDARD 701601-04

Illinois Department of Transportation
 APPROVED January 1, 2005
 ENGINEER OF OPERATIONS
 APPROVED January 1, 2005
 ENGINEER OF DESIGN AND ENVIRONMENT

MORRIS ENGINEERING, INC.
 5100 S. LINCOLN • SUITE 100 • LISLE, ILLINOIS 60532
 PHONE: (630)271-0770 • EMAIL: ECIVIL.COM
 DWG LOCATION: H\04-PH\3004\PLANS-ENG\REV-1
 DRAWN BY: CJS/CMM FLD. BK. / PG. NO.: . . .
 COMPLETION DATE: 4/26/06 JOB NO.: 04-PH-3004

HARLEM AVENUE MEDIAN IMPROVEMENTS			
DETAIL SHEET			
DATE	REVISIONS	BY	SHEET
6/1/06	PER IDOT 5/18/06	OSC	18 OF 31 SHEETS