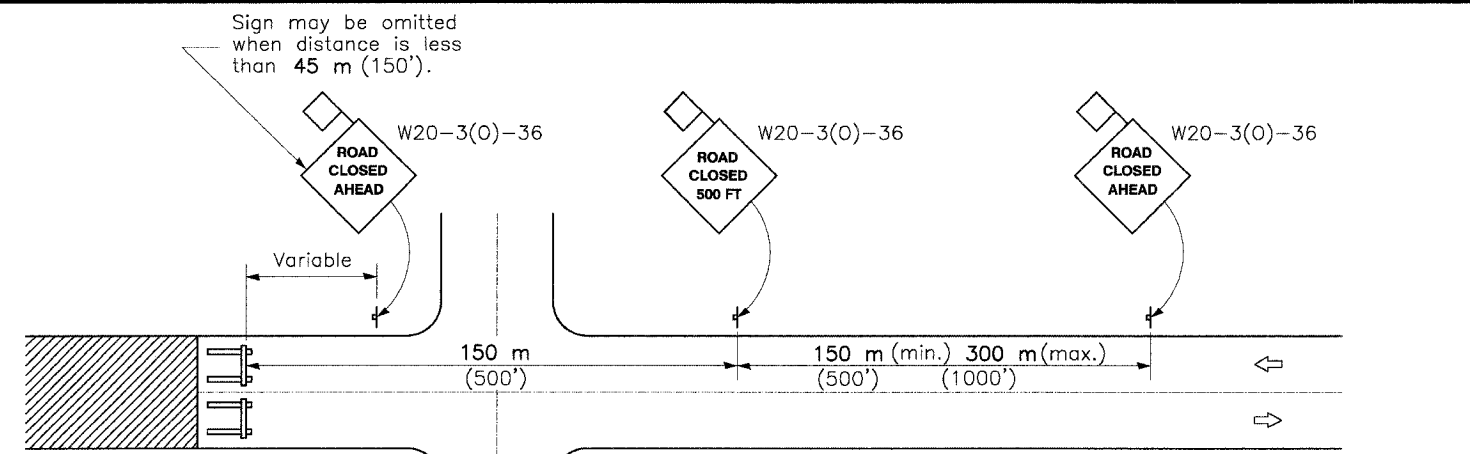
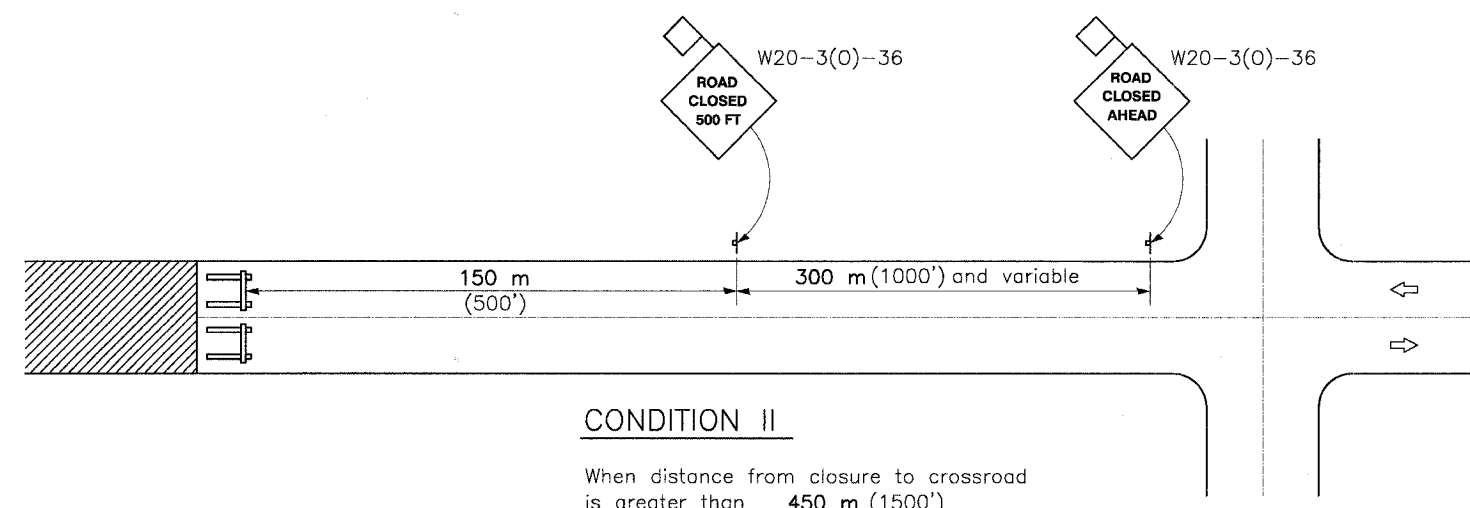


FAP RTE.	SECTION	COUNTY	TOTAL SHEETS	SHEET NO.
348	04-00040-00-LS	COOK	31	20
F.H.W.A. REG.	ILLINOIS	PROJECT: F-0348(02B)		
CONTRACT NUMBER 83863				


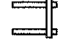



CONDITION I
When distance from closure to crossroad is less than 450 m (1500')



CONDITION II
When distance from closure to crossroad is greater than 450 m (1500')

SYMBOLS

-  Work area
-  Type III Barricade
-  Sign with 450(18) by 450(18) (minimum) orange flag attached

GENERAL NOTES

Type III Barricades and R11-2-4830 signs shall be positioned as shown in "Road Closed To All Traffic" detail on Highway Standard 702001.

Two Type A Low Intensity Flashing Lights shall be used on each approach in advance of the work area during hours of darkness. One light shall be installed above the barricades and the other above the first advance warning sign.

All signs shall be post mounted if the closure time exceeds four days.

All warning signs shall have minimum dimensions of 900 mm (36") by 900 mm (36") and have a black legend on an orange reflectorized background.

All work zone signs are required to meet, as a minimum, Type B reflectivity requirements of Table 1091-2 in Article 1091.02 of the Standard Specifications.

Longitudinal dimensions may be adjusted to fit field conditions.

When the distance between the barricade and the intersection is between 450 m (1500') and 600 m (2000'), the advance sign shall be placed at the intersection. When the distance between the barricade and the intersection is over 600 m (2000'), an additional sign shall be placed at the intersection. The additional sign shall give the distance to the barricade in miles or fractions of a mile.

When fluorescent signs are used, orange flags are not required.

All dimensions are in millimeters (inches) unless otherwise shown.

Illinois Department of Transportation

APPROVED January 1, 2003
Donald W. Robinson
ENGINEER OF LOCAL ROADS AND STREETS

APPROVED January 1, 2003
Michael J. Stone
ENGINEER OF DESIGN AND ENVIRONMENT

ISSUED 1-1-97

DATE	REVISIONS
1-1-03	Revised specification reference in 5th General Note.
1-1-98	Rev. 5th General Note. Added 8th General Note.

TYPICAL APPLICATION OF TRAFFIC CONTROL DEVICES FOR CONSTRUCTION ON RURAL LOCAL HIGHWAYS

STANDARD B.L.R. 21-6

MORRIS ENGINEERING, INC.
5100 S. LINCOLN • SUITE 100 • LISLE, ILLINOIS 60532
PHONE: (630)271-0770 • EMAIL: ECIVIL.COM
DWG LOCATION: H:\04-PH\3004\PLANS-ENG\REV-1
DRAWN BY: CJS/CMM FLD. BK. / PG. NO.: .
COMPLETION DATE: 4/26/06 JOB NO.: 04-PH-3004

HARLEM AVENUE MEDIAN IMPROVEMENTS

DETAIL SHEET

DATE	REVISIONS	BY	SHEET
1 6/1/06	PER IDOT 5/18/06	OSC	20 OF 31 SHEETS
2			
3			