

T.R.	SECTION	COUNTY	TOTAL SHEETS	SHEET NO.	323 W. 3RD ST. P.O. BOX 160 MT. CARMEL, IL 62863
128	03-01128-00-BR	EDWARDS	15	15	
FED. ROAD DIST. NO. 7 ILLINOIS		FED. AID PROJECT		PHONE: (618)-262-8651 FAX: (618)-263-3327	
PROJECT * BR05-04723		CONTRACT * 95478		405 W. STATE ST SUITE 1 PRINCETON, IN 47670	
JOB * C-97-129-06		WALSER CREEK		PHONE: (812)-386-7611 FAX: (812)-385-2812	
LEC JOB # H031008ED					



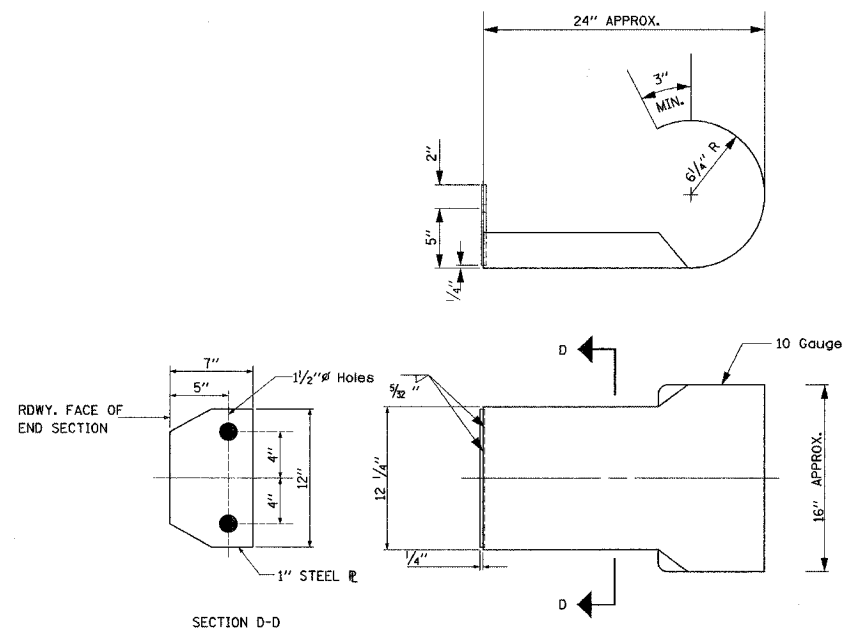
PROFESSIONAL DESIGN FIRM
LAND SURVEY & PROFESSIONAL ENGINEERING CORPORATION
184-00687
(82-032435)(35-002769)



AARON M. MEFFORD
NAME
Aaron Mefford
SIGNATURE
5-10-06
DATE
11-30-07
EXPIRES

ROAD DISTRICT 1
TOWNSHIP ROUTE 128
EDWARDS COUNTY, ILLINOIS

CURLED END SECTION DETAIL



ALL OTHER STEEL SHAPES AND PLATES SHALL CONFORM TO THE REQUIREMENTS OF A.A.S.H.T.O. DESIGNATION M-183 EXCEPT POSTS AND ANGLES SHALL CONFORM TO A.A.S.H.T.O. M-223, GRADE 50.

BOLTS, CAP SCREWS, AND NUTS SHALL CONFORM TO THE REQUIREMENT OF A.S.T.M. DESIGNATION A-307 EXCEPT FOR HIGH STRENGTH BOLTS, NUTS, AND WASHERS NOTED WHICH SHALL CONFORM TO A.A.S.H.T.O. DESIGNATION M-164.

ALL BOLTS, NUTS, CAP SCREWS, WASHERS, AND LOCK WASHERS SHALL BE GALVINIZED IN ACCORDANCE WITH A.A.S.H.T.O. DESIGNATION M-232.

ALL FIELD DRILLED HOLES SHALL BE COATED WITH AN APPROVED ZINC RICH PAINT BEFORE ERRECTION.

SHEET TITLE:

CURLED END SECTIONS DESIGN

SCALE:	NONE
BY:	AMM
DATE:	5/9/06
REV:	

15 OF 15 SHEETS

SHEET NO. 15

C:\p231\0306\0306.dwg 07/13/06 07:53:34 AM