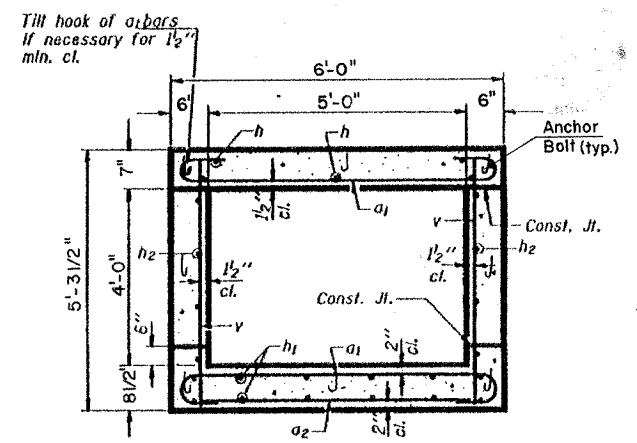
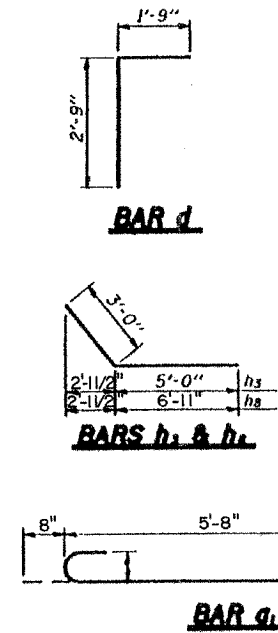
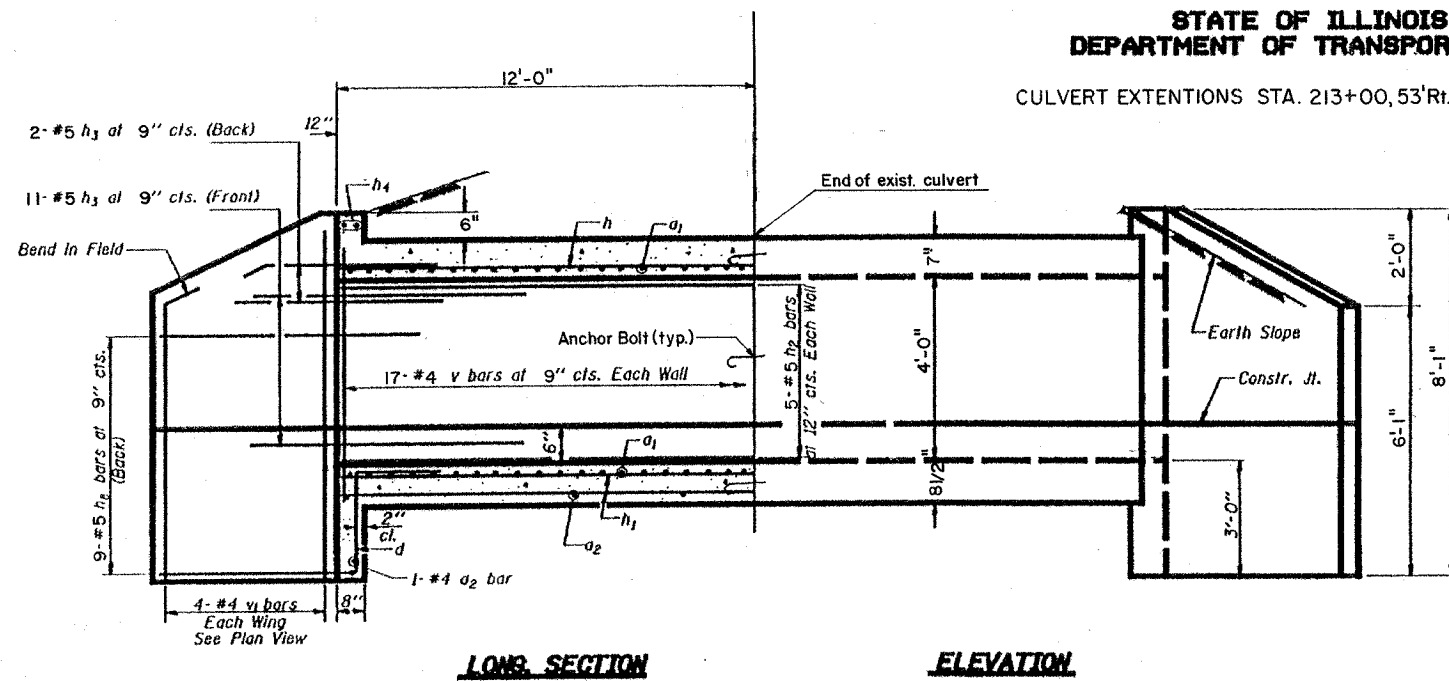


STATE OF ILLINOIS
DEPARTMENT OF TRANSPORTATION

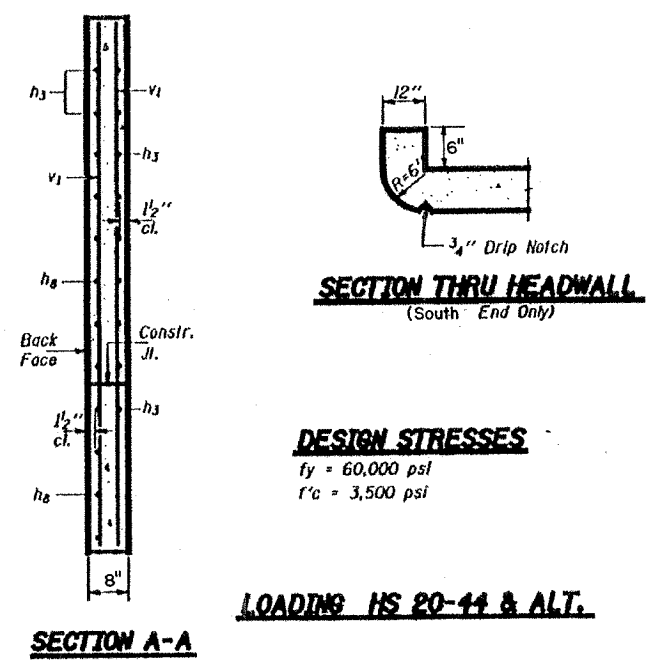
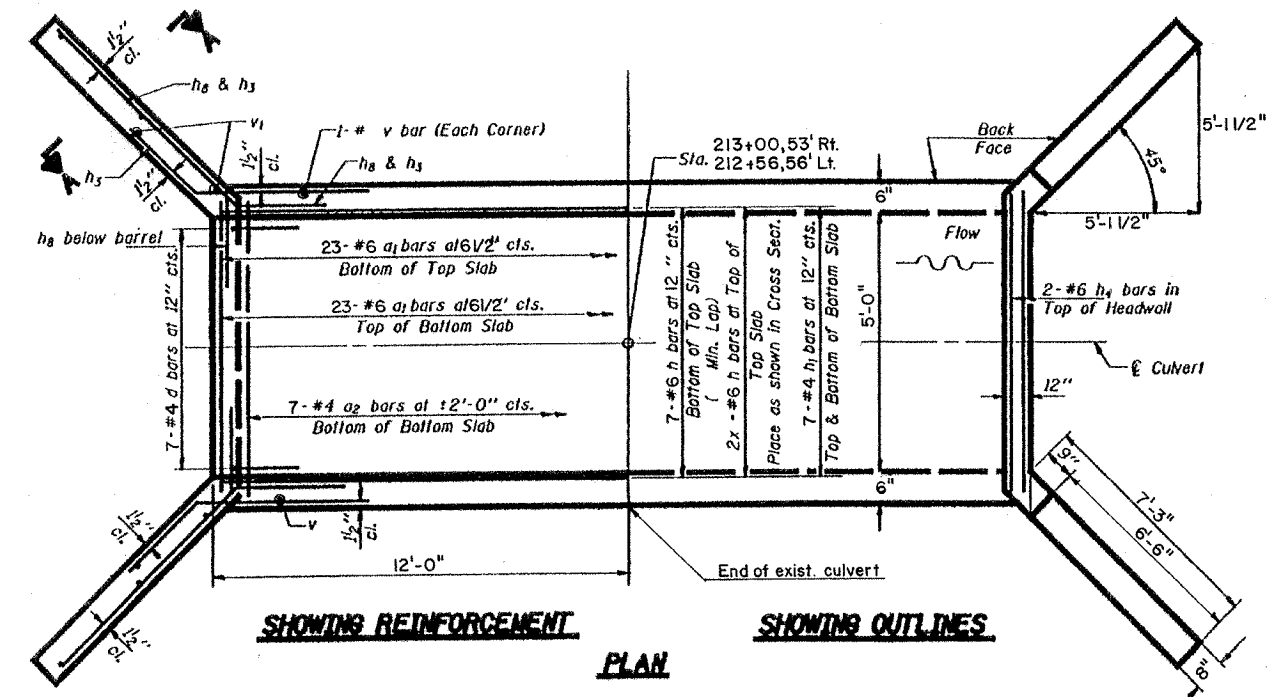
CULVERT EXTENTIONS STA. 213+00, 53' Rt. / STA 212+56, 56' Lt.

PROJECT NO.	SECTION	DATE	BY	CHECKED	SHEET NO. 14 of 59 SHEETS
65-656	*	SHELBY			
CONTRACT NO. 95488					

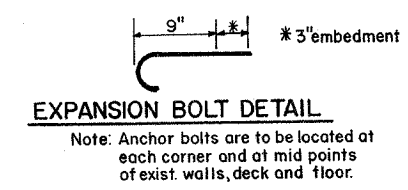


SECTION THRU BARREL
QUANTITIES FOR 1 EXTENSION

Bar	No.	Size	Length	Shape	
a1	46	#6	7'-0"	U	
a2	8	#4	5'-8"	—	
d	7	#4	4'-6"	L	
h	9	#6	11'-8"	—	
h1	14	#4	11'-8"	—	
h2	10	#5	11'-8"	—	
h3	26	#5	8'-0"	—	
h4	2	#6	5'-9"	—	
h5	18	5	9'-11"	—	
v	36	#4	4'-11"	—	
v1	8	#4	7'-7"	—	
Concrete Box Culverts				Cu. Yd.	8.1
Reinforcement Bars				Pound	1505
Expansion Bolts, 3/4" dia				Each	8



DESIGN STRESSES
fy = 60,000 psi
f'c = 3,500 psi



NOTES
A distance of half the length of the wingwall but not less than six feet of the barrel shall be poured monolithically with the wingwalls.

DESIGNED	19
CHECKED	ENGINEER OF BRIDGE DESIGN
DRAWN	DRAWER OF BRIDGE AND STRUCTURES
CHECKED	

SSB-H-0 4-30-98

LOADING HS 20-44 & ALT.