

STATE OF ILLINOIS
DEPARTMENT OF TRANSPORTATION

F.A.I. RTE.	SECTION	COUNTY	TOTAL SHEETS	SHEET NO.
70	60-10-PP-1	MADISON	9	1
		ILLINOIS	CONTRACT NO. 76K92	

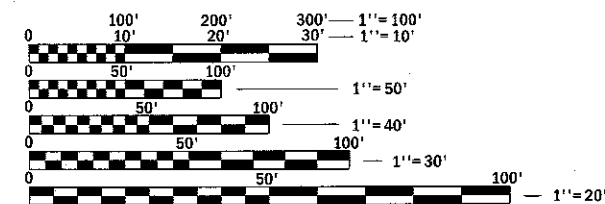
FOR INDEX OF SHEETS, SEE SHEET NO. 2

PROPOSED HIGHWAY PLANS

FAI ROUTE 70 (I-70)
SECTION 60-10-PP-1
PATCHING
MADISON COUNTY

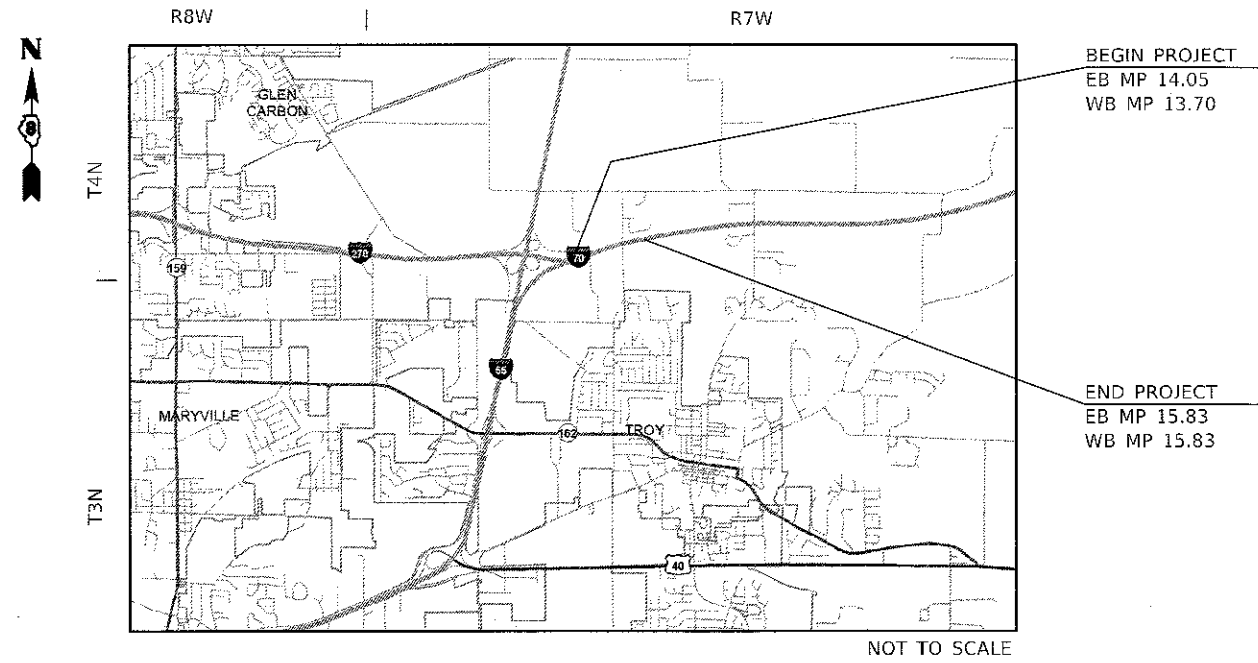
C-98-090-17

D-98-111-17



FULL SIZE PLANS HAVE BEEN PREPARED USING STANDARD ENGINEERING SCALES. REDUCED SIZED PLANS WILL NOT CONFORM TO STANDARD SCALES. IN MAKING MEASUREMENTS ON REDUCED PLANS, THE ABOVE SCALES MAY BE USED.

J.U.L.I.E.
JOINT UTILITY LOCATION INFORMATION FOR EXCAVATION
1-800-892-0123
OR 811



PROJECT ENGINEER: HERVE GELIN (618) 346-3179
PROJECT MANAGER: BILLIE OWEN (618) 346-3209

GROSS LENGTH = 13,200 FT. = 2.5 MILE
NET LENGTH = 9685 FT. = 1.83 MILE

ADT
2015 = 29800 (ACTUAL)
2017 = 30400 (ESTIMATED)
2037 = 37100 (ESTIMATED)
SU = 3.5% MU = 25.2%

CONTRACT NO. 76K92

STATE OF ILLINOIS
DEPARTMENT OF TRANSPORTATION

SUBMITTED *June 30 2017*

Jeffrey Z. K...
REGIONAL ENGINEER

Maxwell M. Addis
ENGINEER OF DESIGN AND ENVIRONMENT

...
DIRECTOR OF PROGRAM DEVELOPMENT

PRINTED BY THE AUTHORITY
OF THE STATE OF ILLINOIS

INDEX OF SHEETS

- 1 COVER SHEET
- 2 INDEX OF SHEETS, STANDARDS, GENERAL NOTES, AND COMMITMENTS
- 3-4 SUMMARY OF QUANTITIES
- 5-6 TYPICAL SECTIONS
- 7-8 SCHEDULES
- 9 LOCATION MAP

STANDARDS

- 000001-06
- 001006
- 701400-09
- 701401-10
- 701406-11
- 701411-09
- 701426-09
- 701428-01
- 701446-08
- 701901-06
- 780001-05
- 781001-04

GENERAL NOTES

- 1 ILLINOIS STATE LAW REQUIRES A 48-HOUR NOTICE BE GIVEN TO ALL UTILITIES WITHIN THE PROJECT AREA BEFORE DIGGING. FIELD MARKING OF FACILITIES MAY BE OBTAINED BY CONTACTING J.U.L.I.E. OR FOR NON-MEMBERS, THE UTILITY COMPANY DIRECTLY. AGENCIES KNOWN TO HAVE FACILITIES WITHIN THE PROJECT AREA ARE AS FOLLOWS:
 * AT&T ILLINOIS
 * BOND MADISON WATER COMPANY
 * BUCKEYE PARTNERS L.P. - WOOD RIVER PIPELINE
 * CHARTER COMMUNICATIONS, INC.
 * SOUTHWESTERN ELECTRIC COOPERATIVE, INC.
 * CITY OF TROY

 MEMBERS OF J.U.L.I.E. CALL TOLL FREE (800) 892-0123 OR 811 AND ARE INDICATED BY *. NON- J.U.L.I.E. MEMBERS MUST BE NOTIFIED INDIVIDUALLY.
- 2 THE CONTRACTOR AND THE ENGINEER SHALL BE AWARE THAT NO SURVEY WAS PERFORMED FOR THIS PROJECT. THE STATIONING, TOPOGRAPHY, AND QUANTITIES SHOWN IN THE PLANS WERE CREATED USING MICROFILM AND FIELD MEASUREMENTS. ALL SHALL BE ASSUMED TO BE APPROXIMATE. THE CONTRACTOR SHALL VERIFY DIMENSIONS AND CONDITIONS IN THE FIELD PRIOR TO CONSTRUCTION AND ORDERING OF MATERIALS.
- 3 THE PROPOSED PAVEMENT MARKING SHALL MATCH THE LOCATIONS OF THE EXISTING PAVEMENT MARKING, AS DIRECTED BY THE ENGINEER.
- 4 THE RESIDENT ENGINEER SHALL VERIFY THE EXISTENCE OF HIGHWAY LIGHTING AND/OR INTELLIGENT TRANSPORTATION SYSTEMS (I.T.S.) UTILITIES WITHIN THE PROJECT LIMITS. IF HIGHWAY LIGHTING AND/OR I.T.S. EXISTS WITHIN THE PROJECT LIMITS, AND IF THESE ITEMS REQUIRE LOCATING, THE CONTRACTOR SHALL BE DIRECTED TO DO SO ACCORDING TO SECTION 803 OF THE STANDARD SPECIFICATIONS. THIS WORK SHALL BE PAID FOR ACCORDING TO ARTICLE 109.04 OF THE STANDARD SPECIFICATIONS.
- 5 THE DEPARTMENT STRONGLY ENCOURAGES THE PRIME CONTRACTOR AND THEIR APPROVED SUB-CONTRACTORS TO HIRE MINORITY, WOMEN AND DISADVANTAGED INDIVIDUALS FROM ITS FEDERALLY FUNDED HIGHWAY CONSTRUCTION CAREERS TRAINING PROGRAM (HCCTP) TO HELP MEET WORKFORCE AND TRAINEE GOALS. THIS PROGRAM IS TRAINING MINORITIES, WOMEN AND DISADVANTAGED INDIVIDUALS IN HIGHWAY CONSTRUCTION-RELATED SKILLS, E.G., MATH FOR THE TRADES, JOB READINESS, TECHNICAL SKILLS COURSEWORK (CARPENTRY, CONCRETE FLATWORK, BLUEPRINT READING, SITE PLANS, SITE WORK, TOOLS USE, ETC.) AND OSHA 10 HOUR CERTIFICATION, TO PREPARE THEM FOR A CAREER IN THE HIGHWAY CONSTRUCTION TRADES. GRADUATES ARE WELL-TRAINED AND READY TO BECOME PRODUCTIVE ENTRY-LEVEL CONSTRUCTION WORKERS. CONTACT THE DISTRICT 8 EEO OFFICE AT 618-346-3360 AND/OR THE HCCTP COORDINATOR AT 618-874-6528 TO LEARN MORE ABOUT THE PROGRAM AND FOR ASSISTANCE IN MEETING WORKFORCE AND TRAINEE GOALS.
- 6 "ROAD CONSTRUCTION AHEAD" SIGNS SHALL BE PLACED AT EACH END OF THE PROJECT PLUS THE INTERSECTING SIDE ROADS, AND WILL BE CONSIDERED INCLUDED IN THE TRAFFIC CONTROL PAY ITEMS. ALL CONSTRUCTION SIGNS SHALL BE 48" X 48" FLUORESCENT ORANGE.
- 7 THE INTENT OF THE PARTIAL DEPTH REMOVAL AND LONGITUDINAL PARTIAL DEPTH REMOVAL IS TO REMOVE HMA RESURFACING ONLY. THE UNDERLYING CONCRETE SHALL NOT BE DISTURBED.
- 8 THE FOLLOWING STRUCTURES ARE OMITTED FROM THIS CONTRACT
 EB
 060-0023 M.P. 15.18 TO M.P. 15.21
 WB
 060-0024 M.P. 15.18 TO M.P. 15.21
- 9 LONGITUDINAL PATCHES SHALL BE 2' WIDE AND SHALL BE ON ALL PAVEMENT EDGE JOINTS EXCEPT FOR THE INSIDE MEDIAN EDGE ADJACENT TO THE YELLOW EDGE LINE.
- 10 MILE POINT 0.00 IS AT THE MADISON/ST. CLAIR COUNTY LINE FOR I-55/70.
- 11 THE CHANGEABLE MESSAGE SIGNS SHALL BE PLACED 2 WEEKS PRIOR TO BEGINNING OF WORK ON ALL SURROUNDING INTERSTATES, AT THE DISCRETION OF THE ENGINEER, AND SHALL REMAIN UP FOR THE DURATION OF THE PROJECT. THOSE NOT SHOWN ON HIGHWAY STANDARD 701400 SHALL BE PAID FOR SEPARATELY.
- 12 ANY YELLOW PAVEMENT MARKING THAT REQUIRES REPLACEMENT DUE TO PARTIAL DEPTH PATCHES SHALL MATCH EXISTING LANE LINE WIDTH AND SHALL BE PAID FOR AS MODIFIED URETHANE PAVEMENT MARKING - LINE 6".

COMMITMENTS
NONE

MIXTURE CHART

MIXTURE USE	PATCHING	LONGITUDINAL PATCHING
AC/PG	PG 64-22	PG 64-22
RAP % (MAX)	SEE SPECIAL PROVISION	SEE SPECIAL PROVISION
DESIGN AIR VOIDS	4.0% @ Ndes=90	4.0% @ Ndes=90
MIX COMPOSITION (GRADATION)	IL 9.5	IL 9.5
FRICTION AGG	MIXTURE "E"	MIXTURE "E"
QUALITY MANAGEMENT PROGRAM	QC/QA	QC/QA

MODEL: Default
 FILE: \\nas0101\B&E\BID\ITEC\Illinois\gov\PWIDOT\Documents\BID\Office\BIDirect\B\Projects\08766923\CaddData\CAD\Sheet\08766923-01-generalnotes.dgn

USER NAME = challandeske	DESIGNED -	REVISED -
	DRAWN -	REVISED -
PLOT SCALE = 100.0000' / in.	CHECKED -	REVISED -
PLOT DATE = 7/6/2017	DATE -	REVISED -

STATE OF ILLINOIS
DEPARTMENT OF TRANSPORTATION

INDEX OF SHEETS, STANDARDS,
GENERAL NOTES, AND COMMITMENTS

SCALE: N/A SHEET OF SHEETS STA. TO STA.

F.A.I. RTE.	SECTION	COUNTY	TOTAL SHEETS	SHEET NO.
70	60-10-PP-1	MADISON	9	2
CONTRACT NO. 76K92				
		ILLINOIS	FED. AID PROJECT	

CODE NO.	ITEM	UNIT	TOTAL QUANTITY	100% STATE ROADWAY
				0005 URBAN
67100100	MOBILIZATION	LSUM	1	1
70100420	TRAFFIC CONTROL AND PROTECTION, STANDARD 701411	EACH	2	2
70100700	TRAFFIC CONTROL AND PROTECTION, STANDARD 701406	LSUM	1	1
70100800	TRAFFIC CONTROL AND PROTECTION, STANDARD 701401	LSUM	1	1
70100815	TRAFFIC CONTROL AND PROTECTION, STANDARD 701446	LSUM	1	1
70200100	NIGHTTIME WORK ZONE LIGHTING	LSUM	1	1
70300100	SHORT TERM PAVEMENT MARKING	FOOT	2661	2661
70300150	SHORT TERM PAVEMENT MARKING REMOVAL	SQ FT	887	887
* 78009006	MODIFIED URETHANE PAVEMENT MARKING - LINE 6"	FOOT	28182	28182
* 78009008	MODIFIED URETHANE PAVEMENT MARKING - LINE 8"	FOOT	2218	2218
* 78009012	MODIFIED URETHANE PAVEMENT MARKING - LINE 12"	FOOT	114	114
* 78100100	RAISED REFLECTIVE PAVEMENT MARKER	EACH	619	619
78300200	RAISED REFLECTIVE PAVEMENT MARKER REMOVAL	EACH	619	619
X4405020	LONGITUDINAL PARTIAL DEPTH REMOVAL 2"	FOOT	49210	49210

* SPECIALTY ITEM

MODEL: C:\p\h\...
 FILE NAME: ...
 PROJECT: ...
 DATE: 7/6/2017

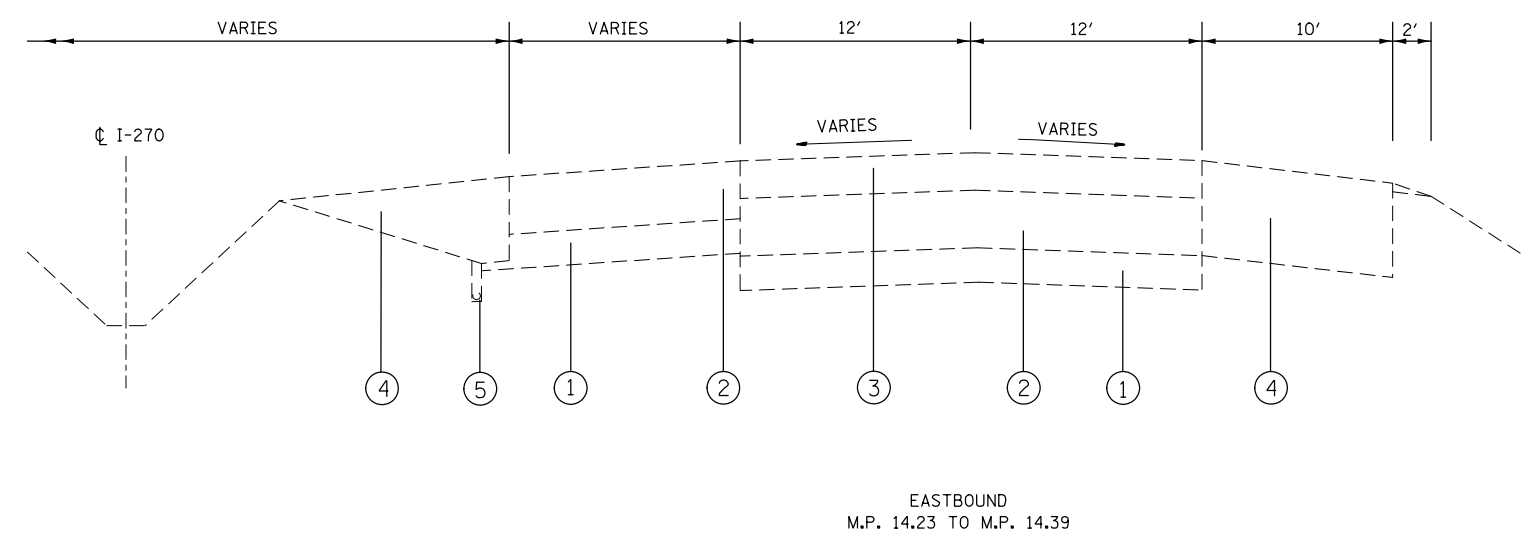
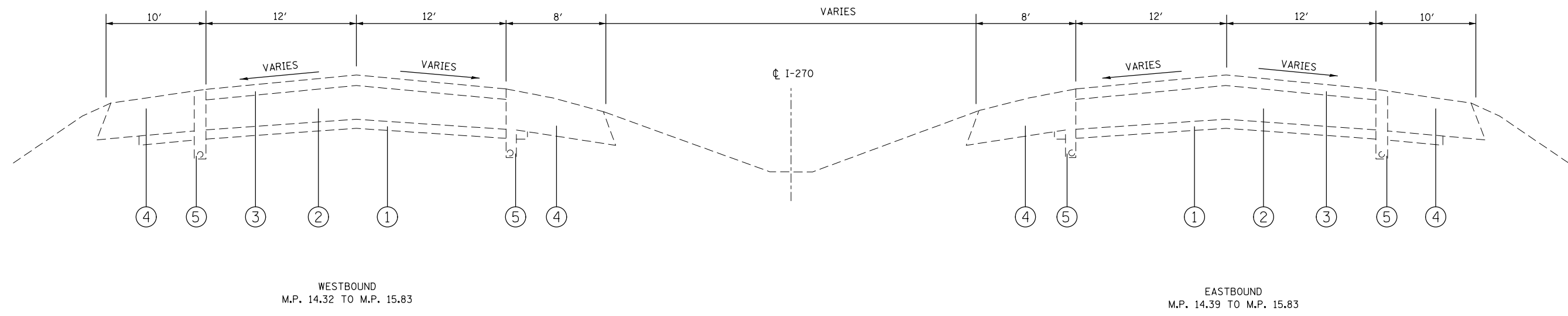
USLR NAME = challoeske	DESIGNED -	REVISED -
DRAWN -	CHECKED -	REVISED -
PLOT SCALE = 100,0000 1" = 100'	DATE -	REVISED -
PLOT DATE = 7/6/2017		

STATE OF ILLINOIS
DEPARTMENT OF TRANSPORTATION

SUMMARY OF QUANTITIES

SCALE: NONE SHEET OF SHEETS STA. TO STA.

F.A.I. RTE.	SECTION	COUNTY	TOTAL SHEETS	SHEET NO.
70	60-10-PP-1	MADISON	9	3
CONTRACT NO. 76K92				
ILLINOIS FED. AID PROJECT				



LEGEND

- ① EXISTING SUB-BASE GRANULAR MATERIAL
- ② EXISTING PCC PAVEMENT, 10"
- ③ EXISTING HOT-MIX ASPHALT OVERLAY
- ④ EXISTING HOT-MIX ASPHALT SHOULDER
- ⑤ EXISTING UNDERDRAIN

MODEL: Default
 FILE NAME: p:\u0000\B&E\BIDD\TEC\Illinois\gov\p\WID\DOT\Documents\1\DOT_Offices\Director\B\Projects\0876692\CADD\DATA\CAD\Sheet\0876692-shs-tpg1ca.dgn

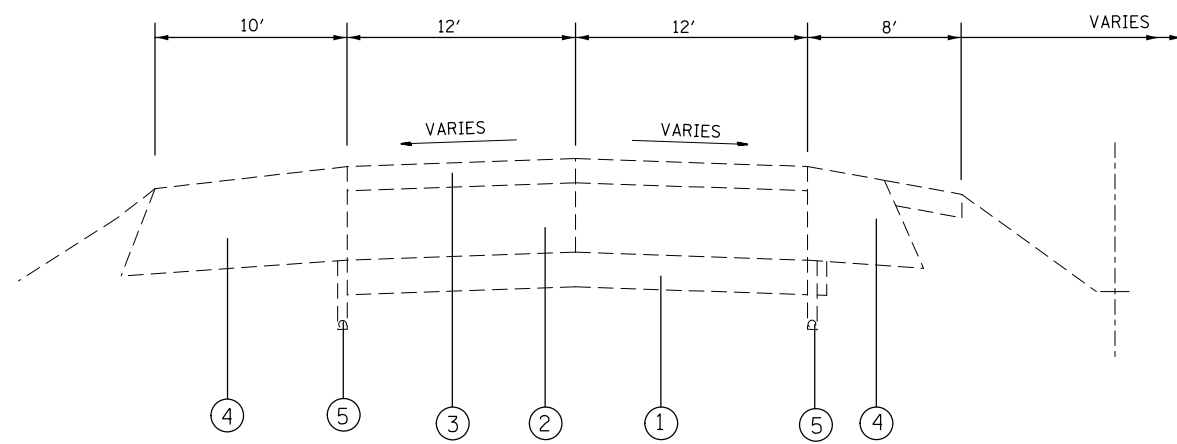
USER NAME = challandeske	DESIGNED -	REVISED -
	DRAWN -	REVISED -
PLOT SCALE = 100.0000 ' / in.	CHECKED -	REVISED -
PLOT DATE = 6/29/2017	DATE -	REVISED -

**STATE OF ILLINOIS
DEPARTMENT OF TRANSPORTATION**

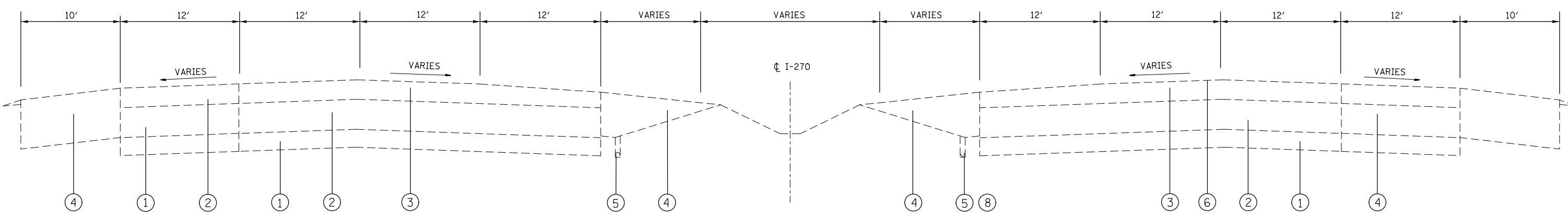
TYPICAL SECTIONS

SCALE: NONE SHEET OF SHEETS STA. TO STA.

F.A.I. RTE.	SECTION	COUNTY	TOTAL SHEETS	SHEET NO.
70	60-10-PP-1	MADISON	9	5
CONTRACT NO. 76K92				
ILLINOIS FED. AID PROJECT				



WESTBOUND RAMP
M.P. 13.70 TO M.P. 14.05



WESTBOUND
M.P. 14.05 TO M.P. 14.32

EASTBOUND
M.P. 14.05 TO M.P. 14.23

LEGEND

- ① EXISTING SUB-BASE GRANULAR MATERIAL
- ② EXISTING PCC PAVEMENT, 10"
- ③ EXISTING HOT-MIX ASPHALT OVERLAY
- ④ EXISTING HOT-MIX ASPHALT SHOULDER
- ⑤ EXISTING UNDERDRAIN

MODEL: Default
 FILE NAME: p:\u0000\B&E\BIDD\TEC\Illinois\gov\PI\DOT\Documents\DOT Office\IDirect\B\Projects\0876692\CADD\DATA\CAD\Sheet\0876692-ehs-tp1ca.dgn

USER NAME = challandeske	DESIGNED -	REVISED -
	DRAWN -	REVISED -
PLOT SCALE = 100.0000' / in.	CHECKED -	REVISED -
PLOT DATE = 6/29/2017	DATE -	REVISED -

**STATE OF ILLINOIS
DEPARTMENT OF TRANSPORTATION**

TYPICAL SECTIONS			
SCALE: NONE	SHEET	OF SHEETS	STA. TO STA.

F.A.I. RTE.	SECTION	COUNTY	TOTAL SHEETS	SHEET NO.
70	60-10-PP-1	MADISON	9	6
CONTRACT NO. 76K92				
ILLINOIS FED. AID PROJECT				

LONGITUDINAL PATCHING SCHEDULE						
LOCATION	BEGIN MILEPOINT	END MILEPOINT	SEGMENT LENGTH(FEET)	NUMBER OF LONGITUDINAL PAVEMENT JOINTS	LONGITUDINAL PARTIAL DEPTH REMOVAL, 2" FOOT	LONGITUDINAL PARTIAL DEPTH PATCHING TON
WESTBOUND	13.70	14.11	2164.80	2	4329.60	107.76
	14.11	14.28	897.60	5	4488.00	111.70
	14.28	14.39	580.80	4	2323.20	57.82
	14.39	14.50	580.80	3	1742.40	43.37
	14.50	15.18	3590.40	2	7180.80	178.72
BRIDGE OMISSION	15.18	15.21				
	15.21	15.83	3273.60	2	6547.20	162.95
EASTBOUND	14.05	14.16	580.80	5	2904.00	72.28
	14.16	14.26	528.00	4	2112.00	52.57
	14.26	14.29	158.40	4	633.60	15.77
	14.29	14.48	1003.20	3	3009.60	74.91
	14.48	15.18	3696.00	2	7392.00	183.98
BRIDGE OMISSION	15.18	15.21				
	15.21	15.83	3273.60	2	6547.20	162.95
TOTAL					49210	1224.8

PAVEMENT MARKING SCHEDULE												
LOCATION	BEGIN MILEPOINT	END MILEPOINT	LENGTH	SHORT TERM PAVEMENT MARKING		SHORT-TERM PAVEMENT MARKING REMOVAL	MODIFIED URETHANE PAVEMENT MARKING				RAISED REFLECTIVE PAVEMENT MARKER EACH	RAISED REFLECTIVE PAVEMENT MARKER REMOVAL EACH
				SKIP-DASH	EDGE LINE		6" SKIP DASH	6" EDGELINE	8" SOLID	12" SOLID		
				FOOT	FOOT		FOOT	FOOT	FOOT	FOOT		
WESTBOUND	13.70	14.11	2164.8	196.8	86.6	94.5	541.2	2164.8			54	54
	14.11	14.32	1108.8	100.8	44.4	48.4	554.4	1108.8	2217.6	114	139	139
	14.32	14.43	580.8	52.8	23.2	25.3	290.4	580.8			15	15
	14.43	15.18	3960	360	158.4	172.8	990.0	3960.0			99	99
BRIDGE OMISSION	15.18	15.21										
	15.21	15.83	3273.6	297.6	130.9	142.8	818.4	3273.6			82	82
EASTBOUND	14.05	14.23	950.4	86.4	38.0	41.5	475.2	2851.2			24	24
	14.23	14.39	844.8	76.8	33.8	36.9	422.4	844.8			21	21
	14.39	15.18	4171.2	379.2	166.8	182.0	1042.8	4171.2			104	104
BRIDGE OMISSION	15.18	15.21										
	15.21	15.83	3273.6	297.6	130.9	142.8	818.4	3273.6			82	82
SUB-TOTALS				1848.0	813.1	887.0	5953.2	22228.8	2217.6	114.0	619	619
TOTAL					2661	887		28182	2218	114	619	619

MODEL: Default
 FILE: \\mlls-pw\ulb\BEBID\NTEC\Illinois\gov\PWIDOT\Documents\DOT_Offices\Director\Projects\0876923\CaddData\CAD\Sheet\0876923-phs-schedule.dgn

USER NAME = challandeske	DESIGNED -	REVISED -
	DRAWN -	REVISED -
PLOT SCALE = 100.0000 ' / in.	CHECKED -	REVISED -
PLOT DATE = 7/6/2017	DATE -	REVISED -

STATE OF ILLINOIS
DEPARTMENT OF TRANSPORTATION

SCHEDULES

SCALE: N/A SHEET OF SHEETS STA. TO STA.

F.A.I. RTE.	SECTION	COUNTY	TOTAL SHEETS	SHEET NO.
70	60-10-PP-1	MADISON	9	7
			CONTRACT NO. 76K92	
		ILLINOIS	FED. AID PROJECT	

PARTIAL DEPTH PATCHING					
LOCATION	MILEPOINT	LENGTH OF PATCH	PARTIAL DEPTH REMOVAL		PARTIAL DEPTH PATCHING TON
			TYPE II, 2" SQ YD	TYPE IV, 2" SQ YD	
LANE 1					
WESTBOUND	13.70	50		67	7.5
	14.33	10	13		1.5
	14.73	10	13		1.5
	15.03	40		53	6.0
	15.18	50		67	7.5
	15.21				
	15.33				
	15.43	10	13		1.5
	15.50	10	13		1.5
	15.63	10	13		1.5
EASTBOUND					
	14.15				
	14.25	10	13		1.5
	14.35	20		27	3.0
	14.45	10	13		1.5
	14.55	100		133	14.9
LANE 1 SUB TOTAL					
			93	347	49
LANE 2					
WESTBOUND	13.70	50		67	7.5
	15.03	40		53	6.0
	15.18	50		67	7.5
	15.21	50		67	7.5
	15.33	40		53	6.0
	15.63	10	113		12.7
EASTBOUND					
	14.15	100		133	14.9
	14.35	20		27	3.0
	14.55	40		53	6.0
	14.65	10	13		1.5
	14.67	10	13		1.5
	14.69	20		27	3.0
	14.75	10	13		1.5
	14.77	10	13		1.5
	14.85	10	13		1.5
	14.87	10	13		1.5
	15.18	75		100	11.2
	15.21	60		80	9.0
	15.52	60		80	9.0
	15.65	10	13		1.5
LANE 2 SUB-TOTAL					
			207	807	113
TOTALS					
			300	1153	163

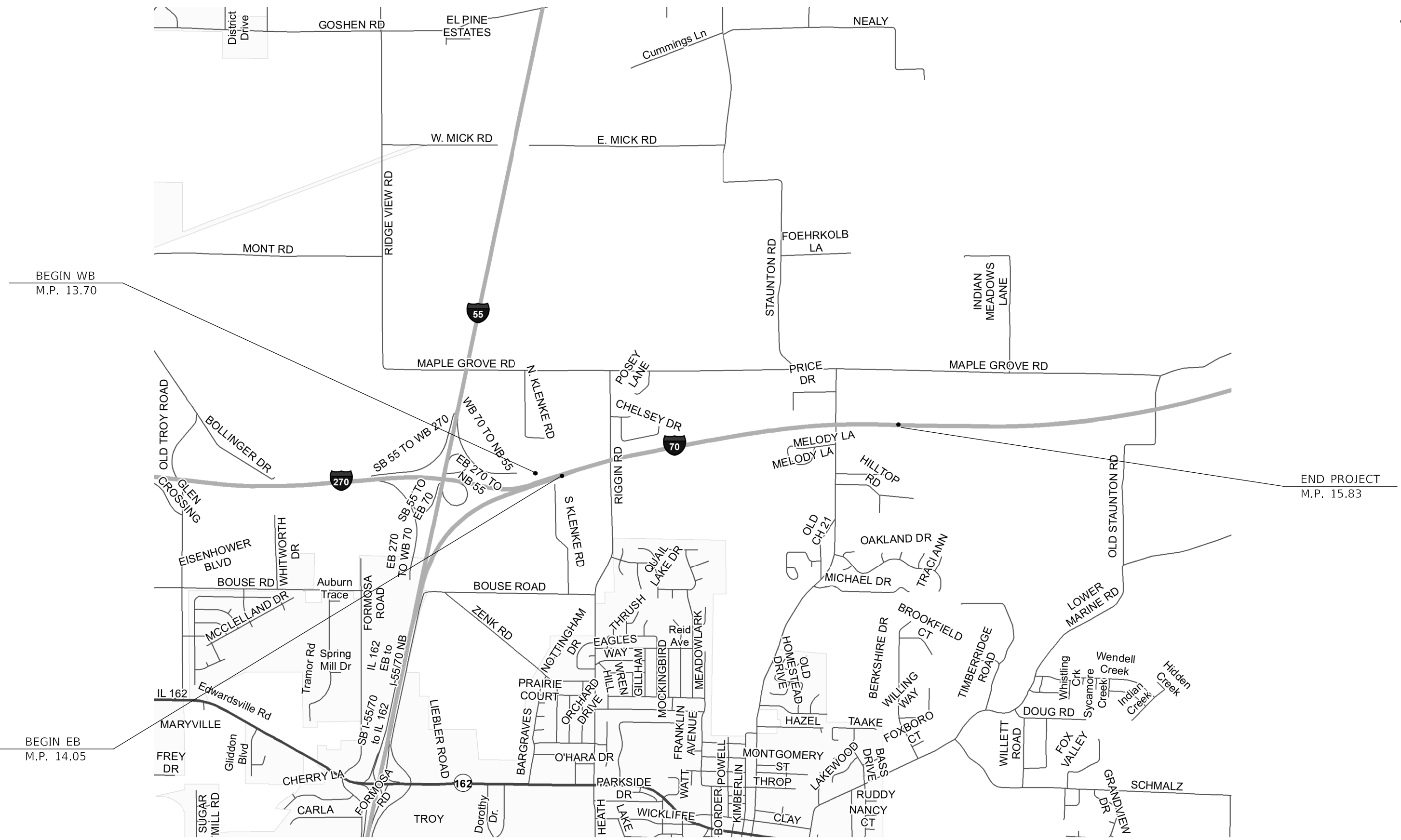
MODEL: Default
 FILE: \\mhc-pw\ulb\BEBID\NTEC\Illinois.gov\PW\DOT\Documents\DOT - Offices\DI\erfct 8\Projects\0876692\CADD\data\CAD\sheet\0876692-pts-schedule.dgn

USER NAME = challeske	DESIGNED -	REVISED -
PLOT SCALE = 100.0000' / in.	DRAWN -	REVISED -
PLOT DATE = 7/6/2017	CHECKED -	REVISED -
	DATE -	REVISED -

STATE OF ILLINOIS
DEPARTMENT OF TRANSPORTATION

SCHEDULES			
SCALE: N/A	SHEET	OF	SHEETS
STA.	TO STA.		

F.A.I. RTE.	SECTION	COUNTY	TOTAL SHEETS	SHEET NO.
70	60-10-PP-1	MADISON	9	8
CONTRACT NO. 76K92				
ILLINOIS FED. AID PROJECT				



BEGIN WB
M.P. 13.70

END PROJECT
M.P. 15.83

BEGIN EB
M.P. 14.05

MODEL: Default
 FILE: Map162_PlanView.dwg
 PROJECT: I-55/70 NB
 DATE: 6/29/2017

USER NAME = challesdeske	DESIGNED -	REVISED -
	DRAWN -	REVISED -
PLOT SCALE = 100,0000' / in.	CHECKED -	REVISED -
PLOT DATE = 6/29/2017	DATE -	REVISED -

**STATE OF ILLINOIS
DEPARTMENT OF TRANSPORTATION**

LOCATION MAP

SCALE: NONE SHEET OF SHEETS STA. TO STA.

F.A.I. RTE.	SECTION	COUNTY	TOTAL SHEETS	SHEET NO.
70	60-10-PP-1	MADISON	9	9
CONTRACT NO. 76K92				
ILLINOIS FED. AID PROJECT				