

STATE OF ILLINOIS
DEPARTMENT OF TRANSPORTATION

FA RTE.	SECTION	COUNTY	TOTAL SHEETS	SHEET NO.
VAR.	2023 VAR. LANDSCAPE	VARIOUS	27	1
ILLINOIS			CONTRACT NO. 62V15	

D-91-153-23

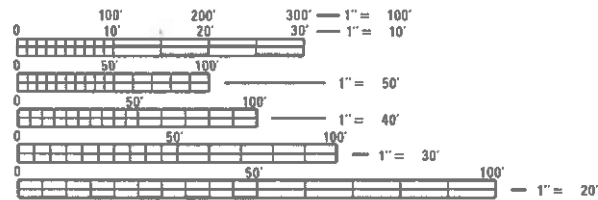
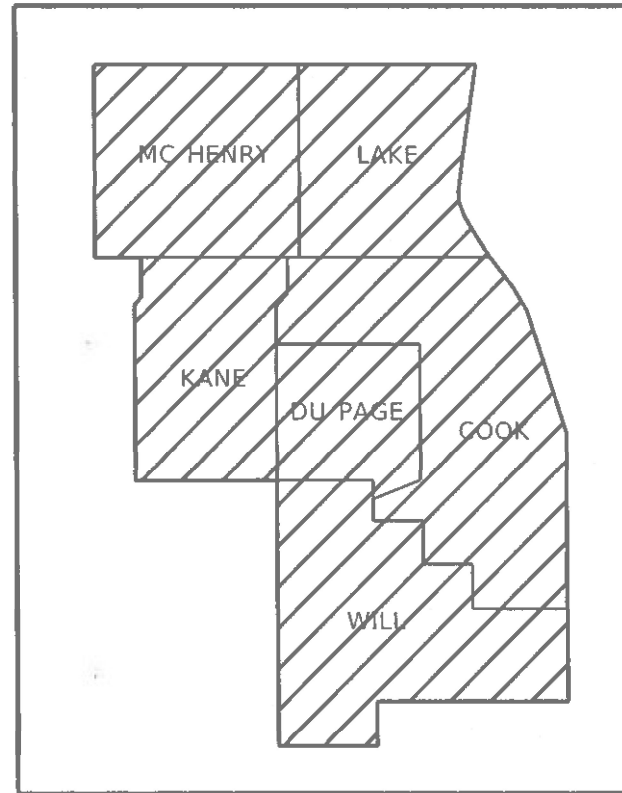
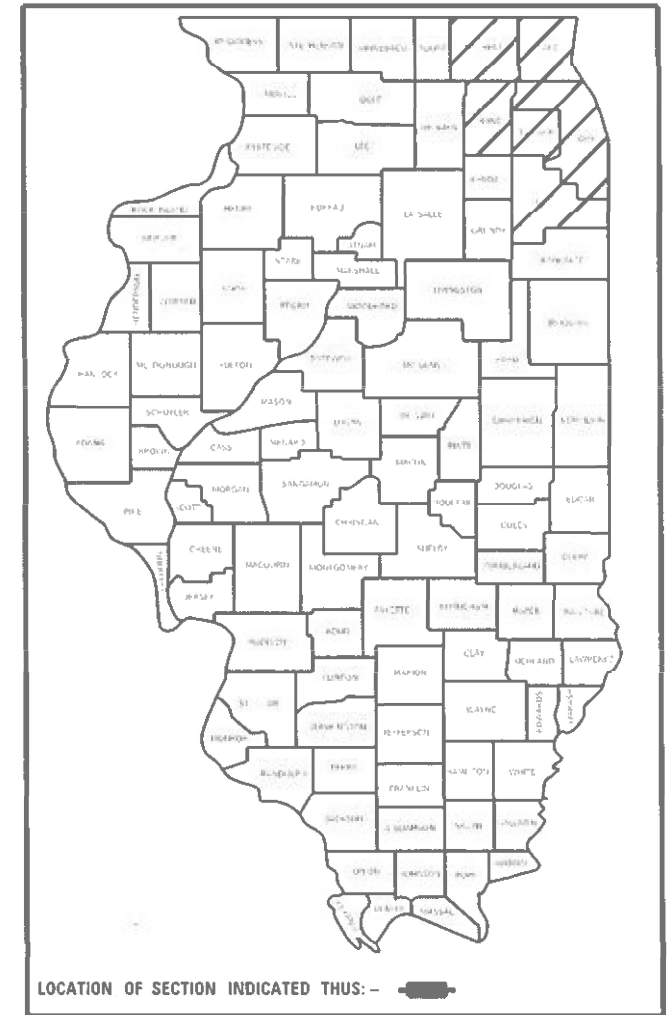
FOR INDEX OF SHEETS, SEE SHEET NO. 2

PROPOSED
HIGHWAY PLANS

ROUTE VARIOUS
SECTION 2023 VAR LANDSCAPE
PROJECT N/A
LANDSCAPE REPAIR & RESTORATION
VARIOUS COUNTY

C-91-220-23

IMPROVEMENTS ARE AT VARIOUS
LOCATIONS WITHIN DISTRICT ONE



FULL SIZE PLANS HAVE BEEN PREPARED USING STANDARD
ENGINEERING SCALES. REDUCED SIZED PLANS WILL NOT
CONFORM TO STANDARD SCALES. IN MAKING MEASUREMENTS
ON REDUCED PLANS, THE ABOVE SCALES MAY BE USED.

J.U.L.I.E.
JOINT UTILITY LOCATION INFORMATION FOR EXCAVATORS
1-800-892-0123
OR 811

PROJECT ENGINEER JAMES STUMPNER
PROJECT MANAGER GIOVANNA ZAFFINA (847) 705-4171

CONTRACT NO. 62V15

GROSS LENGTH = x.xx FT. = x.xxx MILE
NET LENGTH = x.xx FT. = x.xxx MILE

STATE OF ILLINOIS
DEPARTMENT OF TRANSPORTATION

SUBMITTED July 7, 2023
Jose Pineda REGIONAL ENGINEER

August 18, 2023 S.A. Etk
ENGINEER OF DESIGN AND ENVIRONMENT

August 18, 2023 Steph McSwain
DIRECTOR OF HIGHWAYS PROJECT IMPLEMENTATION

PRINTED BY THE AUTHORITY
OF THE STATE OF ILLINOIS

INDEX OF SHEETS

SHEET NO.	DESCRIPTION
1	COVER SHEET
2	INDEX OF SHEETS, HIGHWAY STANDARDS, GENERAL NOTES
3-5	SUMMARY OF QUANTITIES
6	CALENDAR OF CONSTRUCTION & ESTABLISHMENT WORK
7	WORK ORDER
8-25	LOCATION AND WORK SCHEDULE, SPECIFIC LOCATIONS AND WORK SUMMARIES
26	TRAFFIC CONTROL AND PROTECTION SIDE ROADS, INTERSECTIONS, AND DRIVEWAYS (TC-10)
27	TRAFFIC CONTROL DETAIL FOR FREEWAY SHOULDER CLOSURES AND PARTIAL RAMP CLOSURE (TC-17)

GENERAL NOTES

- BEFORE STARTING ANY EXCAVATION, THE CONTRACTOR SHALL CALL "J.U.L.I.E" AT (800) 892-0123 OR 811 FOR FIELD LOCATIONS OF BURIED ELECTRIC, TELEPHONE AND GAS UTILITIES. (48 HOUR NOTIFICATION IS REQUIRED).
- THE CONTRACTOR WILL NOT BE ALLOWED TO SET UP A YARD OR FIELD OFFICE ON STATE PROPERTY WITHOUT WRITTEN PERMISSION FROM THE DEPARTMENT.
- IT SHALL BE THE CONTRACTOR'S RESPONSIBILITY TO VERIFY ALL CONDITIONS EXISTING IN THE FIELD PRIOR TO STARTING WORK ORDERS.
- THE CONTRACTOR SHALL CONTACT DISTRICT ONE TRAFFIC CONTROL SUPERVISOR AT (847) 705-4470 A MINIMUM OF 72 HOURS IN ADVANCE OF BEGINNING WORK.
- THE CONTRACTOR SHALL REQUEST AND GAIN APPROVAL FROM THE ILLINOIS DEPARTMENT OF TRANSPORTATION'S EXPRESSWAY TRAFFIC OPERATIONS ENGINEER AT WWW.IDOTLCS.COM TWENTY-FOUR (24) HOURS IN ADVANCE OF DAILY LANE, RAMP AND SHOULDER CLOSURES AND 7 DAYS IN ADVANCE OF ALL PERMANENT AND WEEKEND CLOSURES ON ALL FREEWAYS AND/OR EXPRESSWAYS IN DISTRICT ONE. THIS ADVANCE NOTIFICATION IS CALCULATED BASED ON WORKWEEK OF MONDAY THROUGH FRIDAY AND SHALL NOT INCLUDE WEEKENDS OR HOLIDAYS.
- THE CONTRACTOR SHALL BE REQUIRED TO PROVIDE ACCESS TO ABUTTING PROPERTY AT ALL TIMES DURING THE CONSTRUCTION OF THIS PROJECT.
- THE CONTRACTOR SHALL USE CARE IN CONSTRUCTION OPERATIONS NEAR ANY AND ALL EXISTING ITEMS THAT WILL NOT BE REMOVED. ANY DAMAGE DONE TO EXISTING ITEMS BY THE CONTRACTOR SHALL BE REPAIRED AT THE CONTRACTOR'S OWN EXPENSE TO THE SATISFACTION OF THE ENGINEER.
- THE CONTRACTOR SHALL MAINTAIN PEDESTRIAN ACCESS AT ALL TIMES DURING CONSTRUCTION.
- DURING CONSTRUCTION OPERATIONS, WHEN ANY LOOSE MATERIAL IS DEPOSITED IN THE FLOW LINE OF DITCHES, GUTTERS, OR DRAINAGE STRUCTURES SO THAT THE NATURAL FLOW OF WATER IS OBSTRUCTED, THE MATERIAL SHALL BE REMOVED AT THE CLOSE OF EACH WORKING DAY. THIS WORK IS CONSIDERED AS PART OF CLEAN-UP.
- THE CONTRACTOR SHALL ADHERE TO ARTICLE 107.23 OF THE CURRENT IDOT STANDARD SPECIFICATIONS BOOK.
- WHEN HERBICIDE WORK IS SPECIFIED AND AUTHORIZED, THE CONTRACTOR SHALL HAVE A LICENSED APPLICATOR ON THE WORK SITE TO PERFORM SAID WORK UNDER THE DIRECT SUPERVISION OF THE RESIDENT ENGINEER.

HIGHWAY STANDARDS

STANDARD NO.	DESCRIPTION
701001-02	OFF-ROAD OPERATIONS, 2L, 2W, MORE THAN 15' AWAY
701006-05	OFF-ROAD OPERATIONS, 2L, 2W, 15' TO 24" FROM PAVEMENT
701106-02	OFF-ROAD OPERATIONS, MORE THAN 15' AWAY
701201-05	LANE CLOSURE, 2L, 2W, DAY ONLY, FOR SPEEDS \geq 45 MPH
701301-04	LANE CLOSURE, 2L, 2W, SHORT TIME OPERATIONS
701311-03	LANE CLOSURE, 2L, 2W, MOVING OPERATIONS - DAY ONLY
701421-08	LANE CLOSURE, MULTILANE, DAY OPERATION ONLY, FOR SPEEDS \geq 45 MPH TO 55 MPH
701422-10	LANE CLOSURE, MULTILANE, FOR SPEEDS \geq 45 MPH TO 55 MPH
701427-05	LANE CLOSURE, MULTILANE, INTERMITTENT OR MOVING OPERATIONS, FOR SPEEDS \leq 40 MPH
701501-06	URBAN LANE CLOSURE, 2L, 2W, UNDIVIDED
701502-09	URBAN LANE CLOSURE, 2L, 2W, BI-DIRECTIONAL LEFT TURN LANE
701601-09	URBAN LANE CLOSURE, MULTILANE, 1W OR 2W WITH NON-TRAVERSABLE MEDIAN
701606-10	URBAN SINGLE LANE CLOSURE, MULTILANE, 2W WITH MOUNTABLE MEDIAN
701611-01	URBAN HALF CLOSURE, MULTILANE, 2W WITH MOUNTABLE MEDIAN
701701-10	URBAN LANE CLOSURE, MULTILANE INTERSECTION
701801-06	SIDEWALK, CORNER OR CROSSWALK CLOSURE
701901-08	TRAFFIC CONTROL DEVICES

MODEL: C:\full\...
 FILE NAME: ...
 PROJECT: ...

SUMMARY OF QUANTITIES			TOTAL QUANTITIES URBAN	CONSTRUCTION TYPE CODE					
CODE NO	ITEM	UNIT		100% STATE 0031					
A2007616	TREE, TAXODIUM DISTICHUM (COMMON BALD CYPRESS), 2" CALIPER, BALLED AND BURLAPPED	EACH	10	10					
A2007916	TREE, TILIA AMERICANA REDMOND (REDMOND AMERICAN LINDEN), 2" CALIPER, BALLED AND BURLAPPED	EACH	7	7					
A2008468	TREE, ULMUS AMERICANA PRINCETON (PRINCETON AMERICAN ELM), 2" CALIPER, BALLED AND BURLAPPED	EACH	14	14					
B2000132	TREE, ACER FREEMANII BAILSTON (MATADOR MAPLE), 2-1/2" CALIPER, BALLED AND BURLAPPED	EACH	8	8					
B2001164	TREE, CERCIS CANADENSIS (EASTERN REDBUD), 5' HEIGHT, CLUMP FORM, BALLED AND BURLAPPED	EACH	10	10					
B2002664	TREE, MALUS ADAMS (ADAMS CRABAPPLE), 5' HEIGHT, CLUMP FORM, BALLED AND BURLAPPED	EACH	3	3					
B2003274	TREE, MALUS DOLGO (DOLGO CRABAPPLE), 2" CALIPER, LOW-BRANCHED, BALLED AND BURLAPPED	EACH	10	10					
B2004216	TREE, MALUS PROFUSION (PROFUSION CRAB APPLE), 2" CALIPER, TREE FORM, BALLED AND BURLAPPED	EACH	8	8					

SUMMARY OF QUANTITIES			TOTAL QUANTITIES URBAN	CONSTRUCTION TYPE CODE					
CODE NO	ITEM	UNIT		100% STATE 0031					
B2010070	TREE, CLADRASTIS KENTUCKEA (AMERICAN YELLOWWOOD), 2" CALIPER, BALLED AND BURLAPPED	EACH	7	7					
B2013468	TREE, MALUS GOLDEN RAINDROPS (GOLDEN RAINDROPS CRABAPPLE), 2" CALIPER, TREE FORM, BALLED AND BURLAPPED	EACH	5	5					
C20058G5	SHRUB, RHUS AROMATICA GRO-LOW (GRO-LOW FRAGRANT SUMAC), 5-GALLON	EACH	10	10					
C2C077G5	SHRUB, ROSA RUGOSA FRAU DAGMAR HARTOPP (FRAU DAGMAR HASTRUP RUGOSA ROSE), CONTAINER GROWN, 5-GALLON	EACH	8	8					
D2001760	EVERGREEN, PICEA ABIES (NORWAY SPRUCE), 5' HEIGHT, BALLED AND BURLAPPED	EACH	15	15					
D2001960	EVERGREEN, PICEA GLAUCA DENSATA (BLACK HILLS SPRUCE), 5' HEIGHT, BALLED AND BURLAPPED	EACH	13	13					
D2002460	EVERGREEN, PINUS FLEXILIS VANDERWOLF'S PYRAMID (VANDERWOLF'S PYRAMID LIMBER PINE), 5' HEIGHT, BALLED AND BURLAPPED	EACH	15	15					
E20220G1	VINE-PARTHENOCISSUS TRICUSPIDATA (BOSTON IVY), 1-GALLON POT	EACH	76	76					
K0012990	PERENNIAL PLANTS, ORNAMENTAL TYPE, GALLON POT	UNIT	2	2					

FILE NAME =	USER NAME = mefssade/rosario	DESIGNED -	REVISED -	STATE OF ILLINOIS DEPARTMENT OF TRANSPORTATION	LANDSCAPE REPAIR AND RESTORATION SUMMARY OF QUANTITIES	F.A. RTE.	SECTION	COUNTY	TOTAL SHEETS	SHEET NO.
dw:\idol-pw-bentley.com\FWIDOT\Documents\VDOT	011105\01str1cl\NProjects\DI15323\CADData\Structures\DI15323-8	DRAWN -	REVISED -			VAR	2023 VAR LANDSCAPE	VARIOUS	27	3
	PLOT SCALE = 100.2824' / In.	CHECKED -	REVISED -			CONTRACT NO. 62V15				
	PLOT DATE = 7/12/2023	DATE -	REVISED -			SCALE: SHEET NO. OF SHEETS STA. TO STA.			FED. ROAD DIST. NO. 1 ILLINOIS FED. AID PROJECT	

SUMMARY OF QUANTITIES				CONSTRUCTION TYPE CODE					SUMMARY OF QUANTITIES				CONSTRUCTION TYPE CODE				
CODE NO	ITEM	UNIT	TOTAL QUANTITIES URBAN	100% STATE 0031					CODE NO	ITEM	UNIT	TOTAL QUANTITIES URBAN	100% STATE 0031				
K0026610	TRANSPLANTED SALVAGED TREES	EACH	13	13					25200110	SODDING, SALT TOLERANT	SO YD	500	500				
K0026850	PERENNIAL PLANT CARE	SO YD	400	400					25200200	SUPPLEMENTAL WATERING	UNIT	60	60				
K0029632	WEED CONTROL, NON-SELECTIVE AND NON-RESIDUAL	GALLON	1	1					67100100	MOBILIZATION	L SUM	1	1				
X2503315	INTERSEEDING, CLASS 4A (MODIFIED)	ACRE	0.32	0.32					A2000216	TREE, ACER X FREEMANII MARMO (MARMO FREEMAN MAPLE), 2" CALIPER, BALLED AND BURLAPPED	EACH	7	7				
X2503321	INTERSEEDING, CLASS 5 (MODIFIED)	ACRE	0.32	0.32					A2002008	TREE, AESCULUS FLAVEA (YELLOW SWEET BUCKEYE), 2" CALIPER, BALLED AND BURLAPPED	EACH	9	9				
X2511630	EROSION CONTROL BLANKET (SPECIAL)	SO YD	2420	2420					A2002714	TREE, CARYA OVATA (SHAGBARK HICKORY), 1-3/4" CALIPER, BALLED AND BURLAPPED	EACH	7	7				
21101605	TOPSOIL FURNISH AND PLACE, 2"	SO YD	1000	1000					A2002816	TREE, CATALPA SPECIOSA (NORTHERN CATALPA), 2" CALIPER, BALLED AND BURLAPPED	EACH	19	19				
21101615	TOPSOIL FURNISH AND PLACE, 4"	SO YD	1000	1000					A2002916	TREE, CELTIS OCCIDENTALIS (COMMON HACKBERRY), 2" CALIPER, BALLED AND BURLAPPED	EACH	22	22				
25000115	SEEDING, CLASS 1B	ACRE	0.5	0.5					A2004702	TREE, GLEDITSIA TRIACANTHOS INERMIS IMPERIAL (IMPERIAL HONEYLOCUST), 2" CALIPER, BALLED AND BURLAPPED	EACH	12	12				
25000210	SEEDING, CLASS 2A	ACRE	0.5	0.5					A2004816	TREE, GLEDITSIA TRIACANTHOS INERMIS SKYLINE (SKYLINE THORNLESS COMMON	EACH	17	17				
25000400	NITROGEN FERTILIZER NUTRIENT	POUND	100	100													
25000500	PHOSPHORUS FERTILIZER NUTRIENT	POUND	100	100													
25000600	POTASSIUM FERTILIZER NUTRIENT	POUND	100	100													
25000750	MOWING	ACRE	2	2													
25100630	EROSION CONTROL BLANKET	SO YD	2420	2420													

FILE NAME =	USER NAME = melissadelrosario	DESIGNED -	REVISED -	STATE OF ILLINOIS DEPARTMENT OF TRANSPORTATION	LANDSCAPE REPAIR AND RESTORATION SUMMARY OF QUANTITIES	F.A. RTE.	SECTION	COUNTY	TOTAL SHEETS	SHEET NO.
pw:\idot-pw.bentley.com\FWIDOT\Documents\DOT Office\District\Projects\015323\CADData\Structures\015323-8	PROJECT = 2023 VAR LANDSCAPE	CHECKED -	REVISED -			VAR	2023 VAR LANDSCAPE	VARIOUS	27	4
PLOT SCALE = 100.2824' / in.	DATE = 7/12/2023	DATE -	REVISED -			CONTRACT NO. 62V15				
						SCALE:	SHEET NO. OF SHEETS	STA. TO STA.	FED. ROAD DIST. NO. 1 ILLINOIS FED. AID PROJECT	

SUMMARY OF QUANTITIES			TOTAL QUANTITIES URBAN	CONSTRUCTION TYPE CODE					
CODE NO	ITEM	UNIT		100% STATE 0031					
A2005020	TREE, GYMNOCLADUS DIOICUS (KENTUCKY COFFEETREE), 2-1/2" CALIPER, BALLED AND BURLAPPED	EACH	19	19					
A2005416	TREE, LIRIODENDRON TULIIFERA (TULIP TREE), 2" CALIPER, BALLED AND BURLAPPED	EACH	7	7					
A2005468	TREE, MALUS JFS KW139MX, (RUBY DAZE CRABAPPLE), 2" CALIPER, TREE FORM, BALLED AND BURLAPPED	EACH	6	6					
A2005616	TREE, OSTRYA VIRGINIANA (AMERICAN HOPHORNBEAM), 2" CALIPER, BALLED AND BURLAPPED	EACH	3	3					
A2006516	TREE, QUERCUS BICOLOR (SWAMP WHITE OAK), 2" CALIPER, BALLED AND BURLAPPED	EACH	22	22					
A2006716	TREE, QUERCUS MACROCARPA (BUR OAK), 2" CALIPER, BALLED AND BURLAPPED	EACH	10	10					
A2006816	TREE, QUERCUS MUEHLENBERGII (CHINKAPIN OAK), 2" CALIPER, BALLED AND BURLAPPED	EACH	10	10					
A2007018	TREE, QUERCUS ROBUR X BICOLOR NADLER (KINDRED SPIRIT HYBRID OAK), 2" CALIPER, BALLED AND BURLAPPED	EACH	3	3					

SUMMARY OF QUANTITIES			TOTAL QUANTITIES URBAN	CONSTRUCTION TYPE CODE					
CODE NO	ITEM	UNIT		100% STATE 0031					
A2007150	TREE, QUERCUS VELUTINA (BLACK OAK), 2" CALIPER, BALLED AND BURLAPPED	EACH	18	18					
Z0076604	TRAINEES - TRAINING PROGRAM GRADUATE	HOURS	2500	2500					

FILE NAME =	USER NAME = mellissadeltrasario	DESIGNED -	REVISED -
pwn\ltdat-pw.bentley.com\PWIDOT\Documents\DOT Off\105\District\Projects\015323\CADDData\Structures\015323-01.dwg		CHECKED -	REVISED -
		DATE -	REVISED -

**STATE OF ILLINOIS
DEPARTMENT OF TRANSPORTATION**

**LANDSCAPE REPAIR AND RESTORATION
SUMMARY OF QUANTITIES**

SCALE: SHEET NO. OF SHEETS STA. TO STA.

F.A. RTE.	SECTION	COUNTY	TOTAL SHEETS	SHEET NO.
VAR	2023 VAR LANDSCAPE	VARIOUS	27	5
CONTRACT NO. 62V15				
FED. ROAD DIST. NO. 1 ILLINOIS FED. AID PROJECT				

0042

62V15 - SCHEDULE OF LANDSCAPE CONSTRUCTION AND ESTABLISHMENT WORK

ITEM	2023			2024												2025											
	OCTOBER	NOVEMBER	DECEMBER	JANUARY	FEBRUARY	MARCH	APRIL	MAY	JUNE	JULY	AUGUST	SEPTEMBER	OCTOBER	NOVEMBER	DECEMBER	JANUARY	FEBRUARY	MARCH	APRIL	MAY	JUNE	JULY	AUGUST	SEPTEMBER	OCTOBER	NOVEMBER	
	PHASE I						PHASE II						PHASE III					PHASE IV									
Plant Material Inspections	Submit completed plant inspection forms to IDOT by December 15 for spring planting season			Submit completed plant inspection sheets to IDOT for SPRING 2024 plantings (Initial Installations)			IDOT inspects SPRING 2024 plant material at various nurseries			Submit completed plant inspection sheets to IDOT for FALL 2024 replacement plantings (IF NECESSARY)			Submit completed plant inspection sheets to IDOT for SPRING 2025 REPLACEMENT plantings (IF NECESSARY)			IDOT inspects SPRING 2025 plant material at various nurseries (IF NECESSARY)											
Tree, Shrub, & Vine Plantings	SPRING plantings of balled and burlapped: EVERGREENS: March 15 to April 30 DECIDUOUS: March 15 - May 30						SPRING PLANTINGS (INITIAL INSTALLATION)						PERIOD OF ESTABLISHMENT INSPECTION BY IDOT														
	Period of Establishment Plant Care: Weed & Water (Included in cost of tree, shrub, & vine installation)						2	2	2	2	2	2	2	2	2	2	2	2	2	2	2	2	2	2	2	2	2
	REPLACEMENT PLANTINGS FALL: October 15 to November 30 SPRING: March 15 to May 15												FALL REPLACEMENT PLANTINGS (IF REQUIRED)					SPRING REPLACEMENT PLANTINGS (IF REQUIRED)									
	Supplemental Watering (WOODY PLANTS)						SUPPLEMENTAL WATERING (IF NECESSARY, AS DIRECTED BY ENGINEER)												SUPPLEMENTAL WATERING (AS DIRECTED BY THE ENGINEER)								
Perennial Plantings	Ornamental Perennial Plants INSTALLATION SPRING: May 1 to June 15 LATE SUMMER: August 15 to September 15						SPRING PERENNIAL PLANTINGS			LATE SUMMER PERENNIAL PLANTINGS								SPRING PERENNIAL PLANTINGS (IF NECESSARY)		LATE SUMMER PERENNIAL PLANTINGS (IF NECESSARY)							
	Period of Establishment Plant Care: Weed & Water (Included in cost of perennial plants installation)						WEED AND WATER (FOR 30 DAYS AFTER INSTALLATION)			WEED AND WATER (FOR 30 DAYS AFTER INSTALLATION)																	
	Perennial Plant Care (After Period of Establishment Care)						PERENNIAL PLANT CARE (AS DIRECTED BY THE ENGINEER)												PERENNIAL PLANT CARE (AS DIRECTED BY THE ENGINEER)								
	Supplemental Watering (PERENNIALS)						SUPPLEMENTAL WATERING OF PERENNIALS (AS DIRECTED BY THE ENGINEER)												SUPPLEMENTAL WATERING OF PERENNIALS (AS DIRECTED BY THE ENGINEER)								
Turf Restoration	Seeding, Class 1B & 2A SPRING: April 1 to June 15 FALL: August 1 to November 1 DORMANT: November 2 to March 31			FALL SEEDING (IF NEEDED)			SPRING SEEDING (IF NEEDED)			FALL SEEDING (IF NEEDED)			DORMANT SEEDING (IF NEEDED)		SPRING SEEDING (IF NEEDED)					FALL SEEDING (IF NEEDED)							
	Sodding, Salt Tolerant SPRING: March 15 to June 1 FALL: August 1 to Sept 15 DORMANT: Sept 16 to March 15						SPRING SODDING (IF NEEDED)			FALL SODDING (IF NEEDED)			SPRING SODDING (IF NEEDED)					FALL SODDING (IF NEEDED)									
Native Areas Restoration	Weed Control, Non-Selective & Non - Residual						IF NEEDED			IF NEEDED			IF NEEDED					IF NEEDED									
	Interseeding/Seeding, Class 4A & 5 (Modified) FALL: November 1 to December 15			FALL INTERSEEDING																							
	Mowing (ACRE)						IF NEEDED												IF NEEDED								

MODEL: Default
FILE NAME: \\ps01\illinois\paw_bentley\csm\62V15\DOT\Documents\62V15\62V15_Schedule_of_Landscapes.dgn

USER NAME = melissa.delrosario	DESIGNED -	REVISED -
PLOT SCALE = 100,2824' / in.	DRAWN -	REVISED -
PLOT DATE = 7/12/2023	CHECKED -	REVISED -
	DATE -	REVISED -

**STATE OF ILLINOIS
DEPARTMENT OF TRANSPORTATION**

**CALENDAR OF CONSTRUCTION & ESTABLISHMENT WORK
LANDSCAPE REPAIR AND RESTORATION**

SCALE: SHEET OF SHEETS STA. TO STA.

F.A. RTE.	SECTION	COUNTY	TOTAL SHEETS	SHEET NO.
VAR	2023 VAR LANDSCAPE	VARIOUS	27	6
CONTRACT NO. 62V15			ILLINOIS FED. AID PROJECT	



**LANDSCAPE REPAIR
WORK ORDER
CONTRACT 62V15**

WORK ORDER NUMBER	PAGE: _____ OF _____
-------------------	----------------------

MARKED ROUTE	LOCATION	COUNTY	MUNICIPALITY

WORK ORDER SUMMARY

PAY CODE	PAY ITEM	QUANTITY

SPECIAL INSTRUCTIONS/
CALCULATIONS

AUTHORIZATION OF WORK ORDER

IDOT Resident Engineer/Technician Signature

Date Work Order Issued _____ Contractor Initials _____

CERTIFICATION OF COMPLETED WORK

Contractor Signature

Date Work Order Completed _____

OFFICE USE ONLY

	INITIAL(S)	DATE
Prepared by:		
Measured in place by:		
Calculated by:		
Checked by:		

INSPECTION AND ACCEPTANCE OF COMPLETED WORK

Inspector Signature

Date Work Ordered Inspected and Accepted _____

This is to certify that the work has been completed in conformance with contract

THIS WORK ORDER IS A SAMPLE FORM ONLY.

USER NAME = mellssa.delrosario	DESIGNED -	REVISED -
PLOT SCALE = 100,3024' / in.	DRAWN -	REVISED -
PLOT DATE = 7/12/2023	CHECKED -	REVISED -
	DATE -	REVISED -

**STATE OF ILLINOIS
DEPARTMENT OF TRANSPORTATION**

**WORK ORDER
LANDSCAPE REPAIR AND RESTORATION**

SCALE: _____ SHEET _____ OF _____ SHEETS STA. _____ TO STA. _____

F.A. RTE.	SECTION	COUNTY	TOTAL SHEETS	SHEET NO.
VAR	2023 VAR LANDSCAPE	VARIOUS	27	7
				CONTRACT NO. 62V15
ILLINOIS FED. AID PROJECT				

MODEL: Default
FILE NAME: P:\Illinois\dot\pub\hantley.com\RWIDOT\Documents\IDOT_Offices\District_1\Projects\ID15223\CADDData\Structures\ID15223-shr-landscape.dgn

DESCRIPTION	SIZE	TOTAL QUANTITIES	LOCATIONS												
			SOUTH COOK					CENTRAL COOK	NORTH COOK				DISTRICT ONE		
			I-57 (NB) EXPRESSWAY (S/O 119TH TO S/O 127TH ST) CALUMET PARK	I-57 (SB) EXPRESSWAY (S/O 119TH TO S/O 127TH ST) CALUMET PARK	I-57 SB REST AREA (MONEE)	I-57 NB REST AREA (MONEE)	HARLEM AVE (70TH TO 111TH) WORTH, PALOS HILLS, & BRIDGEVIEW	I-90 (EB) ADDISON ST EXIT RAMP (CHICAGO)	IL 83 N/O LEXINGTON DR (WHEELING)	IL 58 E/O COLLEGE DR (DES PLAINES)	MOUNT PROSPECT RD & ALGONQUIN RD (DES PLAINES)	N VIRN ALLEN CT & US 14 (PALATINE)	AS NEEDED		
ACER X FREEMANNII 'MATADOR'	2.5"	8		8											
ACER X FREEMANNII 'MARMO'	2"	7					7								
AESCLUS FLAVA	2"	9	9												
CATALPA SPECIOSA	2"	19		9			10								
CARYA OVATA	1.75"	7	7												
CELTIS OCCIDENTALIS	2"	22	9	9			4								
CLADASTRIS KENTUKEA	2"	7		7											
GLEDITISIA TRIACANTHOS VAR INERMIS 'IMPERIAL'	2"	12	12												
GLEDITISIA TRIACANTHOS VAR INERMIS 'SKYLINE'	2"	17					17								
GYMNOCLADUS DIOICUS	2"	19	11				8								
LIRIODENDRON TULIPIFERA	2"	7		7											
OSTRAYA VIRGINIANA	2"	3					3								
QUERCUS BICOLOR	2"	22		14			8								
QUERCUS MACROCARPA	2"	10	10												
QUERCUS MUEHLENBERGII	2"	10	5	5											
QUERCUS ROBUR X BICOLOR 'NADLER'	2"	3							3						
QUERCUS VELUTINA	2"	18	9	9											
TAXODIUM DISTICHUM	2"	10		7			3								
TILIA AMERICANA 'REDMOND'	2"	7					7								
ULMUS AMERICANA 'PRINCETON'	2"	14					14								
total shade trees		231	72	75	0	0	81	0	3	0	0	0	0	0	0
CERCIS CANADENSIS	5'	10		10											
MALUS 'ADAMS'	5'	3						3							
MALUS 'DOLGO'	2"	10	10												
MALUS 'RUBY DAZE'	2"	6										6			
MALUS 'PROFUSION'	2"	8					8								
MALUS 'GOLDEN RAINDROPS'	2"	5					5								
total intermediate trees		42	10	10	0	0	13	3	0	0	0	6	0	0	0
PICEA ABIES	5'	15	7	8											
PICEA GLAUCA VAR. DENSATA	5'	13	6	7											
PINUS FLEXILIS 'VANDERWOLF'S PYRAMID'	5'	15	7	8											
total evergreen trees		43	20	23	0	0	0	0	0	0	0	0	0	0	0
TOTAL TREES		316	102	108	0	0	94	3	3	0	0	6	0	0	0

MODEL: Default
 FILE NAME: I:\Mileage\paw_bentley.com\PIV\DOT\Documents\DOT_0\files\04a.tbl.tbl I:\Projects\1523\COAD\04a\Structures\011523-shr-landscp.dgn

USER NAME = melissa.delrosario	DESIGNED -	REVISED -
PLOT SCALE = 100,3024' / in.	DRAWN -	REVISED -
PLOT DATE = 7/12/2023	CHECKED -	REVISED -
	DATE -	REVISED -

**STATE OF ILLINOIS
DEPARTMENT OF TRANSPORTATION**

LOCATION AND WORK SCHEDULE			
LANDSCAPE REPAIR AND RESTORATION			
SCALE:	SHEET	OF SHEETS	STA. TO STA.

F.A.* RTE.	SECTION	COUNTY	TOTAL SHEETS	SHEET NO.
VAR	2023 VAR LANDSCAPE	VARIOUS	27	8
CONTRACT NO. 62V15			ILLINOIS FED. AID PROJECT	

DESCRIPTION	SIZE	MAINTENANCE FUNDS	LOCATIONS										DISTRICT ONE		
			SOUTH COOK					CENTRAL COOK	NORTH COOK						
			I-57 (NB) EXPRESSWAY (S/O 119TH TO S/O 127TH ST) CALUMET PARK	I-57 (SB) EXPRESSWAY (S/O 119TH TO S/O 127TH ST) CALUMET PARK	I-57 SB REST AREA (MONEE)	I-57 NB REST AREA (MONEE)	HARLEM AVE (70TH TO 111TH) WORTH, PALOS HILLS, & BRIDGEVIEW	I-90 (EB) ADDISON ST EXIT RAMP (CHICAGO)	IL 83 N/O LEXINGTON DR (WHEELING)	IL 58 E/O COLLEGE DR (DES PLAINES)	MOUNT PROSPECT RD & ALGONQUIN RD (DES PLAINES)	N VIRN ALLEN CT & US 14 (PALATINE)		AS NEEDED	
RHUS AROMATICA 'GRO-LOW'	#3	10							10						
ROSA RUGOSA 'FRAU DAGMAR HASTRUP'	#3	8							8						
total shrubs		18	0	0	0	0	0	0	18	0	0	0	0	0	0
BOSTON IVY	GAL	76	76												
total vines		76													
PERENNIAL PLANTS, ORNAMENTAL TYPE, GALLON POT	GAL	2			0.41	0.4			1.19						
PERENNIAL PLANT CARE	SQ YDS	400			200	200									
MOWING	ACRE	2									0.32				1.68
WEED CONTROL, NON-SELECTIVE & NON-RESIDUAL	GALLON	1													1
TRANSPLANTED SALVAGED TREES	EACH	13			5	8									
TOPSOIL FURNISH AND PLACE, 2"	SQ YD	1000										145			855
TOPSOIL FURNISH AND PLACE, 4"	SQ YD	1000													1000
NITROGEN FERTILIZER NUTRIENT	POUND	100										3			97
PHOSPHORUS FERTILIZER NUTRIENT	POUND	100										3			97
POTASSIUM FERTILIZER NUTRIENT	POUND	100										3			97
SEEDING, CLASS 2A	ACRE	0.5										0.03			0.47
EROSION CONTROL BLANKET (REG)	SQ YD	2420										145			2275
SODDING, SALT TOLERANT	SQ YD	500													500
SEEDING, CLASS 1B (SPECIAL)	ACRE	0.5													0.5
EROSION CONTROL BLANKET (SPECIAL)	SQ YD	2420													2420
INTERSEEDING, CLASS 4A (MODIFIED)	ACRE	0.32									0.32				0
INTERSEEDING, CLASS 5 (MODIFIED)	ACRE	0.32									0.32				0
SUPPLEMENTAL WATERING	UNIT	60													60

MODEL: D:\rfaill...
 FILE NAME: p:\rfaill...
 PROJECT: D:\1152323\CONTRACT\Documents\DOT...
 DIFF: 08/12/2023

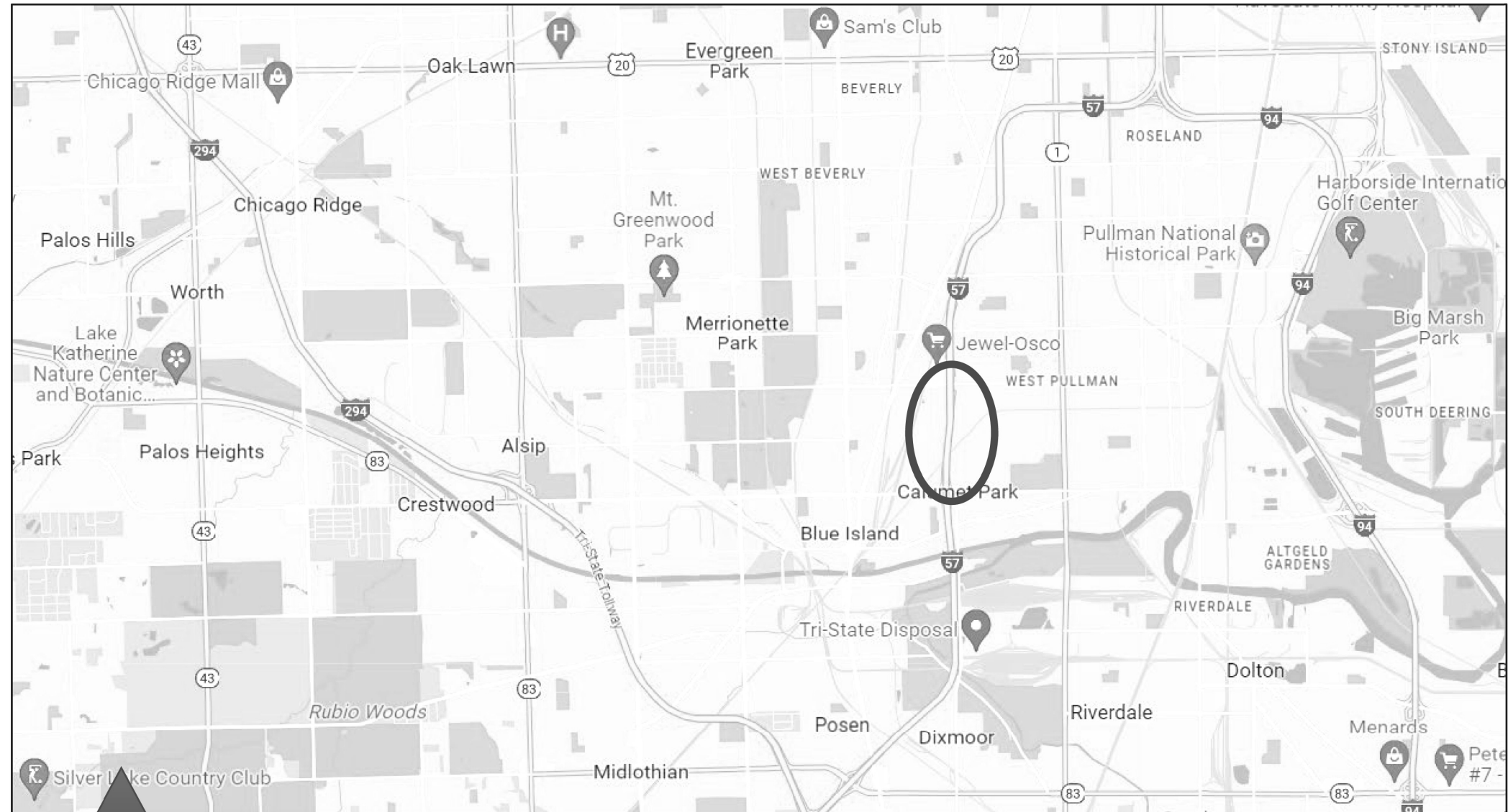
USER NAME = melissa.delrosario	DESIGNED -	REVISED -
	DRAWN -	REVISED -
PLOT SCALE = 100,3024 ' / in.	CHECKED -	REVISED -
PLOT DATE = 7/12/2023	DATE -	REVISED -

STATE OF ILLINOIS
DEPARTMENT OF TRANSPORTATION

LOCATION AND WORK SCHEDULE
LANDSCAPE REPAIR AND RESTORATION

SCALE: SHEET OF SHEETS STA. TO STA.

F.A. RTE.	SECTION	COUNTY	TOTAL SHEETS	SHEET NO.
VAR	2023 VAR LANDSCAPE	VARIOUS	27	9
CONTRACT NO. 62V15				
ILLINOIS FED. AID PROJECT				



**62V15 – SPRING 2024
I-57 NORTHBOUND (SOUTH OF 127TH ST TO SOUTH OF 119TH ST)
CALUMET PARK, IL**

MODEL: Default
FILE NAME: p:\allstate\w\benfry.com\PI\DOT\Documents\DOT - Office\District 1\Project\62V15\23\CAD\Structures\62V1523-62V15-62V15.dgn

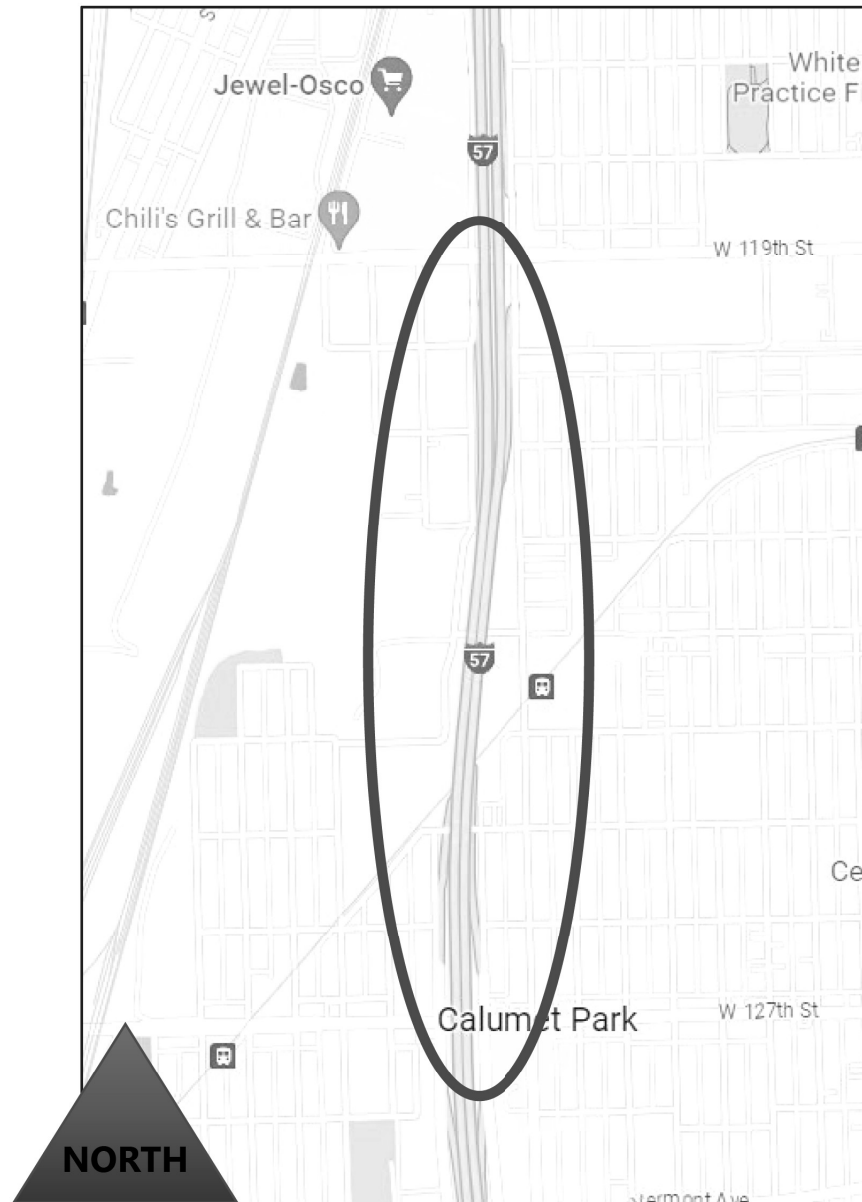
USER NAME =	mellissadelrosario	DESIGNED -	REVISD -
		DRAWN -	REVISD -
PLOT SCALE =	100,3024' / in.	CHECKED -	REVISD -
PLOT DATE =	7/12/2023	DATE -	REVISD -

**STATE OF ILLINOIS
DEPARTMENT OF TRANSPORTATION**

**I-57 NB (S/O 127TH ST TO S/O 119TH ST)
LANDSCAPE REPAIR & RESTORATION**

SCALE: SHEET OF SHEETS STA. TO STA.

F.A. RTE.	SECTION	COUNTY	TOTAL SHEETS	SHEET NO.
VAR	2023 VAR LANDSCAPE	VARIOUS	27	10
CONTRACT NO. 62V15			ILLINOIS FED. AID PROJECT	



**I-57 NORTHBOUND (SOUTH OF 127TH ST
TO SOUTH OF 119TH ST)
CALUMET PARK, IL**

Plant the following at this location:

- 9 – Tree, *Aesculus flava* (Sweet Yellow Buckeye), 2" Caliper, B&B
- 7 – Tree, *Carya ovata* (Shagbark Hickory), 2" Caliper, B&B
- 9 – Tree, *Celtis occidentalis* (Common Hackberry), 2" Caliper, B&B
- 12 – Tree, *Gleditsia triacanthos inermis* Imperial (Imperial Thornless Honeylocust), 2" Caliper, B&B
- 11 – Tree, *Gymnocladus dioica* (Kentucky Coffeetree), 2-1/2" Caliper, B&B
- 10 – Tree, *Quercus macrocarpa* (Bur Oak), 2" Caliper, B&B
- 5 – Tree, *Quercus muehlenbergii* (Chinkapin Oak), 2" Caliper, B&B
- 9 – Tree, *Quercus velutina* (Black Oak), 2" Caliper, B&B
- 10 – Tree, *Malus Dolgo* (Dolgo Crabapple), 2" Caliper, B&B
- 7 – Evergreen, *Picea abies* (Norway Spruce), 5' Height, B&B
- 6 – Evergreen, *Picea glauca* var. *Densata* (Black Hills Spruce), 5' Height, B&B
- 7 – Evergreen, *Pinus flexilis* Vanderwolf's Pyramid (Vanderwolf's Pyramid Limber Pine), 5' Height, B&B
- 76 – *Parthenocissus tricuspidata* (Boston Ivy), 1 –Gallon Pot (2' OC/Mulch Bed)

***Note: All plant material will be flagged in the field.
Contact Fabiola Quiroz 847.705.4596.**

MODEL: Default
 FILE: \\sdr\pwwork\benlley.com\PI\DOT\Documents\DOT_Offices\District_1\Projects\115323\CADD\InfoStructures\115323-shl-b.mxd\$ep.dgn

USER NAME = melissa.delrosario	DESIGNED -	REVISED -	STATE OF ILLINOIS DEPARTMENT OF TRANSPORTATION	I-57 NB (S/O 127TH ST TO S/O 119TH ST) LANDSCAPE REPAIR & RESTORATION	F.A. RTE.	SECTION	COUNTY	TOTAL SHEETS	SHEET NO.
DRAWN -	REVISED -	VAR			2023 VAR LANDSCAPE	VARIOUS	27	11	
PLOT SCALE = 100.0689' / in.	CHECKED -	REVISED -			CONTRACT NO. 62V15				
PLOT DATE = 7/12/2023	DATE -	REVISED -			ILLINOIS FED. AID PROJECT				
				SCALE:	SHEET	OF	SHEETS	STA.	TO STA.



62V15 – SPRING 2024
I-57 SOUTHBOUND (SOUTH OF 127TH ST TO SOUTH OF 119TH ST)
CALUMET PARK, IL

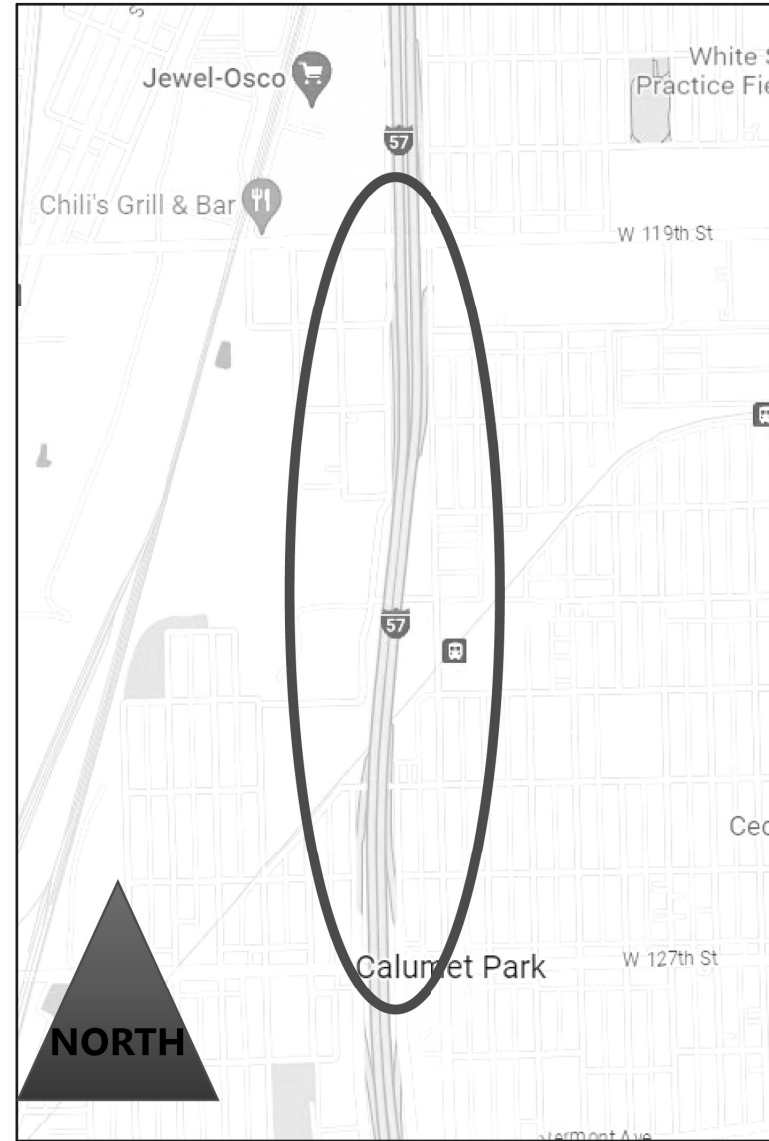
MODEL: Default
 FILE NAME: \\pawulscawebentby.com\RWIDOT\Documents\DOT_Offices\District_1\Project\62V15\23\CADD\Structures\62V1523-ent-landscap.dgn

USER NAME = melissa.delrosario	DESIGNED -	REVISED -
	DRAWN -	REVISED -
PLOT SCALE = 100,3024' / in.	CHECKED -	REVISED -
PLOT DATE = 7/12/2023	DATE -	REVISED -

STATE OF ILLINOIS
DEPARTMENT OF TRANSPORTATION

I-57 NB (S/O 127TH ST TO S/O 119TH ST)			
LANDSCAPE REPAIR & RESTORATION			
SCALE:	SHEET	OF SHEETS	STA. TO STA.

F.A. RTE.	SECTION	COUNTY	TOTAL SHEETS	SHEET NO.
VAR	2023 VAR LANDSCAPE	VARIOUS	27	12
CONTRACT NO. 62V15				
ILLINOIS FED. AID PROJECT				



**I-57 SOUTHBOUND (SOUTH OF 127TH ST
TO SOUTH OF 119TH ST)
CALUMET PARK, IL**

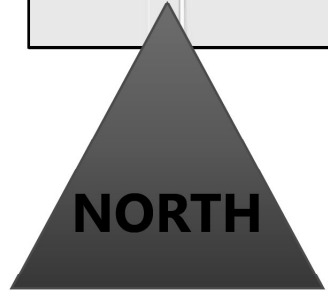
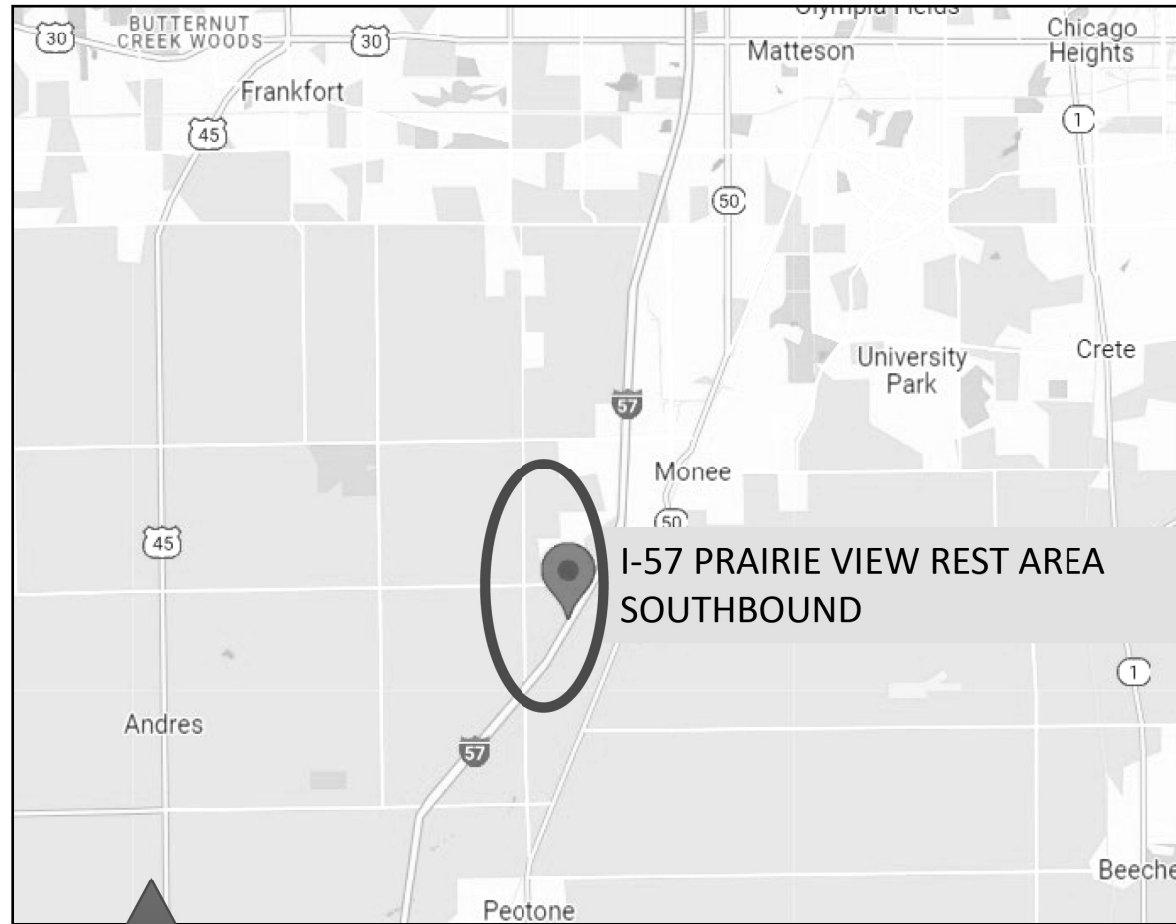
Plant the following at this location:

- 8 – Tree, Acer x freemanii Matador (Matador Freeman Maple), 2" Caliper, B&B
- 9 – Tree, Catalpa speciosa (Northern Catalpa), 2" Caliper, B&B
- 9 – Tree, Celtis occidentalis (Common Hackberry), 2" Caliper, B&B
- 7 – Tree, Cladastris kentuckea (American Yellowwood), 2" Caliper, B&B
- 7 – Tree, Liriodendron tulipifera (Tulip Tree), 2" Caliper, B&B
- 14 – Tree, Quercus bicolor (Swamp White Oak), 2" Caliper, B&B
- 5 – Tree, Quercus muehlenbergii (Chinkapin Oak), 2" Caliper, B&B
- 9 – Tree, Quercus velutina (Black Oak), 2" Caliper, B&B
- 10 – Tree, Taxodium distichum (Common Bald Cypress), 2" Caliper, B&B
- 10 – Tree, Cercis canadensis (Eastern Redbud), 5' Height, B&B
- 8 – Evergreen, Picea abies (Norway Spruce), 5' Height, B&B
- 7 – Evergreen, Picea glauca var. Densata (Black Hills Spruce), 5' Height, B&B
- 8– Evergreen, Pinus flexilis Vanderwolf's Pyramid (Vanderwolf's Pyramid Limber Pine), 5' Height, B&B

***Note: All plant material will be flagged in the field.
Contact Fabiola Quiroz 847.705.4596.**

NOTUL: Default
 FILE: M:\115223\CADD\Drawings\Structures\115223-shr-landscap.dgn
 I:\Projects\115223\CADD\Drawings\Structures\115223-shr-landscap.dgn

USER NAME = melissa.delrosario	DESIGNED -	REVISED -	STATE OF ILLINOIS DEPARTMENT OF TRANSPORTATION	I-57 SB (S/O 127TH ST TO S/O 119TH ST) LANDSCAPE REPAIR & RESTORATION	F.A. RTE.	SECTION	COUNTY	TOTAL SHEETS	SHEET NO.	
PLOT SCALE = 100.0447' / in.	DRAWN -	REVISED -			VAR	2023 VAR LANDSCAPE	VARIOUS	27	13	
PLOT DATE = 7/12/2023	CHECKED -	REVISED -			CONTRACT NO. 62V15					
	DATE -	REVISED -			ILLINOIS FED. AID PROJECT					
				SCALE:	SHEET	OF	SHEETS	STA.	TO STA.	



**62V15 – SPRING 2024
I-57 SOUTHBOUND
PRAIRIEVIEW REST AREA
MONEE, IL**

Plant the following at this location:

5 – Transplanted Salvaged Trees

Note: The 5 trees to be transplanted will be marked in the field and will be replanted elsewhere within the Prairieview Rest Area (SB) grounds.

.41 units – Perennial Plants, Ornamental Type, Gallon Pot:

- 10 – *Asclepias tuberosa* (Butterfly Milkweed)
- 11 – *Geum triflorum* (Prairie Smoke)
- 10 – *Oenothera macrocarpa* (Missouri Evening Primrose)
- 10 – *Vernonia lettermannii* 'Butterfly' (Iron Butterfly Narrow Leaf Ironweed)

Contact for layout:

Fabiola Quiroz
847.705.4596

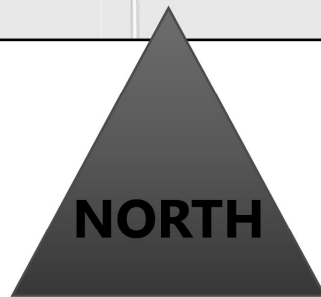
MODEL PATH: \\p1d05-cw-bentley.com:PWIDOT\Documents\DOT_Offices\Burdet_1\Project\62V15\23\CAD\Drawings\Structures\62V15\23\sb-landsc-04.dgn
FILE NAME: \\p1d05-cw-bentley.com:PWIDOT\Documents\DOT_Offices\Burdet_1\Project\62V15\23\CAD\Drawings\Structures\62V15\23\sb-landsc-04.dgn

USER NAME = melissa.delosario	DESIGNED -	REVISED -
	DRAWN -	REVISED -
PLOT SCALE = 100,0644' / in.	CHECKED -	REVISED -
PLOT DATE = 7/12/2023	DATE -	REVISED -

**STATE OF ILLINOIS
DEPARTMENT OF TRANSPORTATION**

I-57 SB PRAIRIEVIEW REST AREA LANDSCAPE REPAIR & RESTORATION			
SCALE:	SHEET	OF SHEETS	STA. TO STA.

F.A. RTE.	SECTION	COUNTY	TOTAL SHEETS	SHEET NO.
VAR	2023 VAR LANDSCAPE	VARIOUS	27	14
CONTRACT NO. 62V15				
ILLINOIS FED. AID PROJECT				



**62V15 – SPRING 2024
I-57 NORTHBOUND
PRAIRIE VIEW REST AREA
MONEE, IL**

Spring 2024

Plant the following at this location:

8 – Transplanted Salvaged Trees

Note: The 8 trees to be transplanted will be marked in the field and will be replanted elsewhere within the Prairie View Rest Area (NB) grounds.

.40 units – Perennial Plants, Ornamental Type,
Gallon Pot:

- 10 – *Asclepias tuberosa* (Butterfly Milkweed)
- 10 – *Geum triflorum* (Prairie Smoke)
- 10 – *Oenothera macrocarpa*
(Missouri Evening Primrose)
- 10 – *Vernonia lettermannii* 'Butterfly'
(Iron Butterfly Narrow Leaf Ironweed)

Contact for layout:

Fabiola Quiroz
847.705.4596

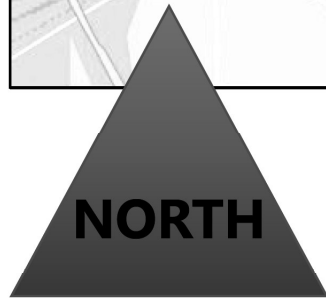
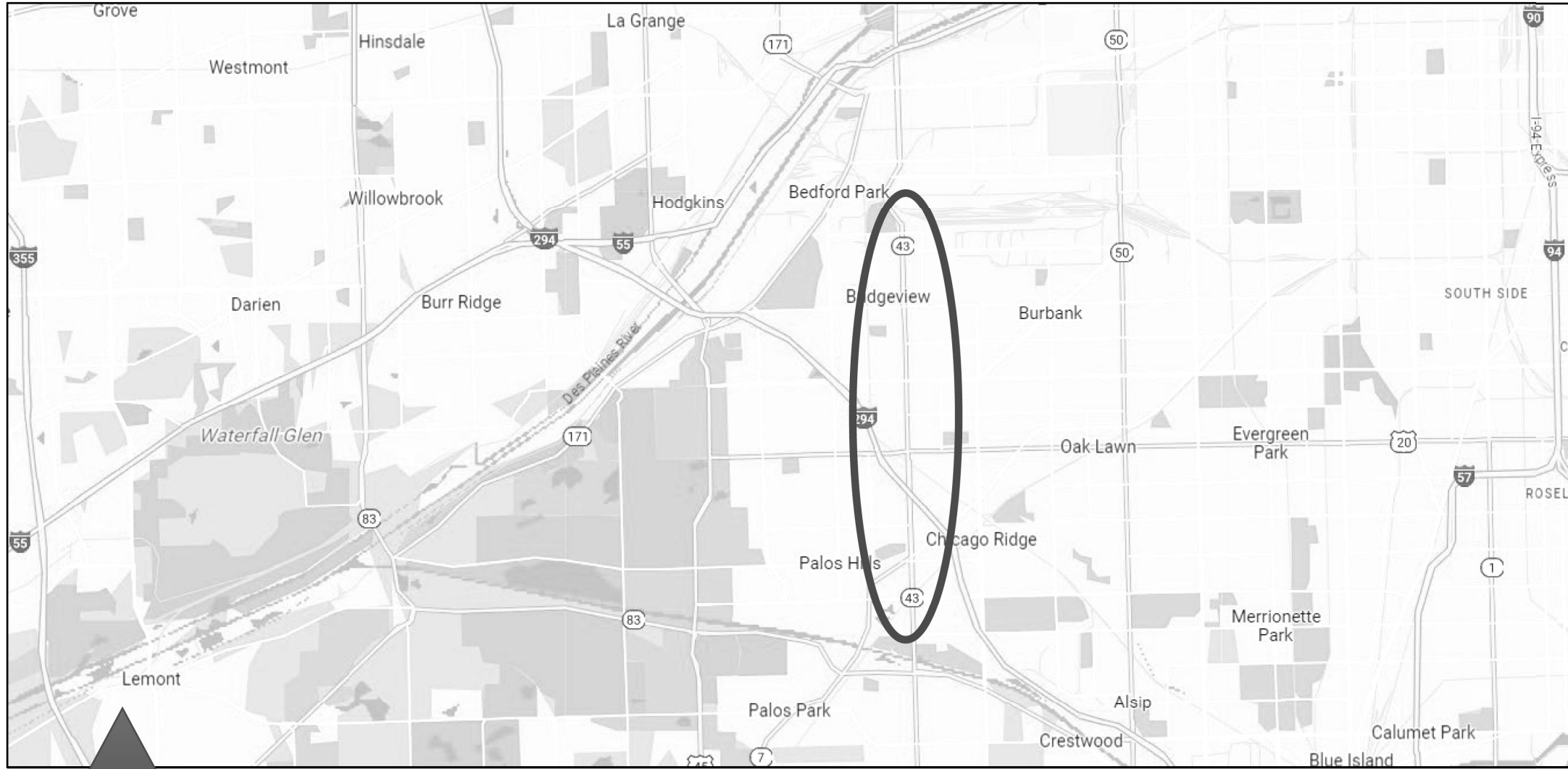
MODEL: Data; FILE NAME: \\naillifescow-beahty.com\PIV\DOT\Documents\DOT_Offices\DH\rdt_3\Projects\62V15\23\CD\DATA\SIN\CURVES\01153232\sh-andres.dwg

USER NAME = melissa.delrosario	DESIGNED -	REVISED -
	DRAWN -	REVISED -
PLOT SCALE = 100.3156' / in.	CHECKED -	REVISED -
PLOT DATE = 7/12/2023	DATE -	REVISED -

**STATE OF ILLINOIS
DEPARTMENT OF TRANSPORTATION**

I-57 NB PRAIRIE VIEW REST AREA LANDSCAPE REPAIR & RESTORATION			
SCALE:	SHEET	OF	SHEETS
	STA.	TO	STA.

F.A. RTE.	SECTION	COUNTY	TOTAL SHEETS	SHEET NO.
VAR	2023 VAR LANDSCAPE		27	15
			CONTRACT NO. 62V15	
ILLINOIS FED. AID PROJECT				



**62V15 – SPRING 2024
HARLEM AVE (70TH ST TO 111TH ST)
WORTH, PALOS HILLS & BRIDGEVIEW, IL**

MODEL: Default
FILE NAME: \\ps01\share\new\jenliby.com\PIV\DOT\Documents\DOT - Diff\es\01\bit\1 - Projects\62V15\DOT\Structures\62V15\23-shh-lands\p.dgn

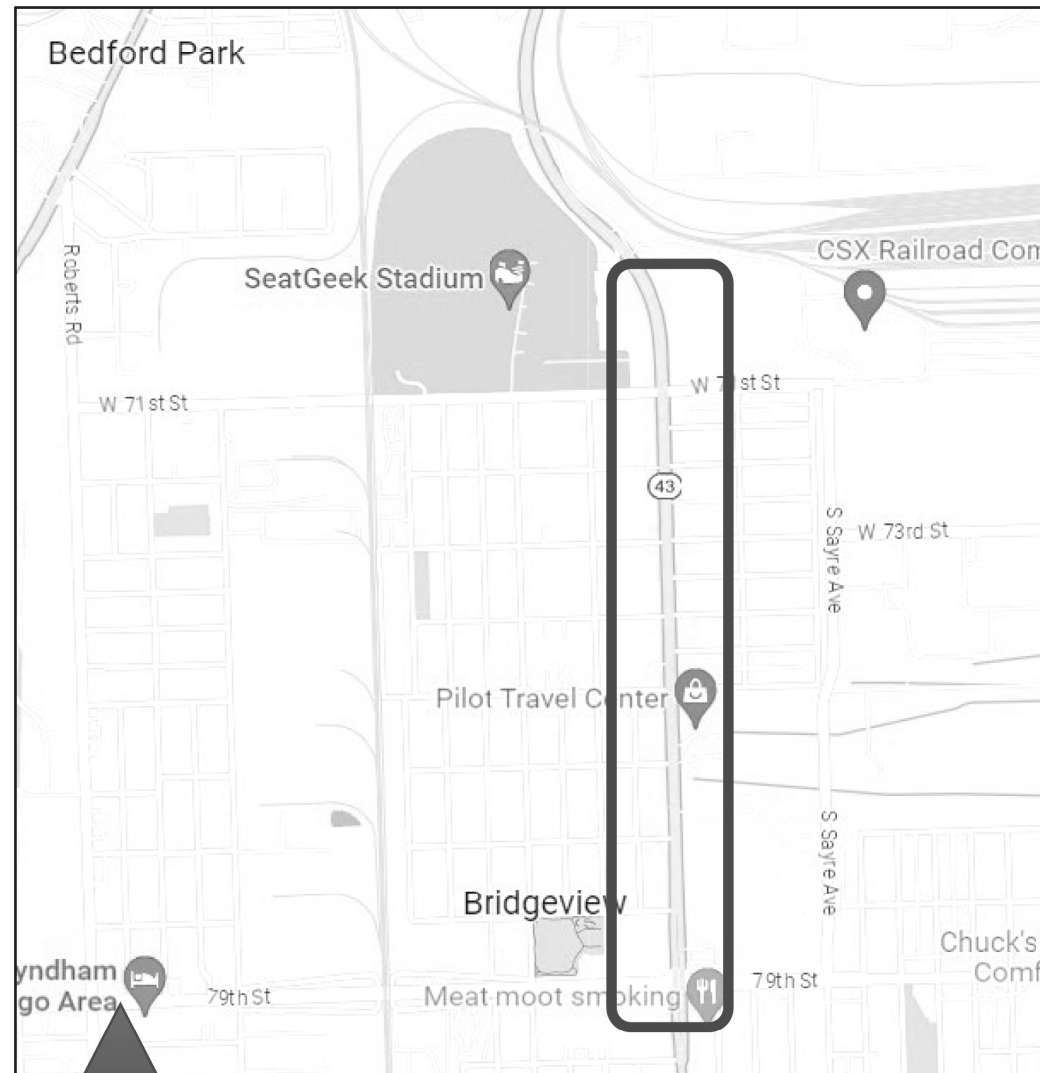
USER NAME = melissa.delrosario	DESIGNED -	REVISED -
	DRAWN -	REVISED -
PLOT SCALE = 100,3156' / in.	CHECKED -	REVISED -
PLOT DATE = 7/12/2023	DATE -	REVISED -

**STATE OF ILLINOIS
DEPARTMENT OF TRANSPORTATION**

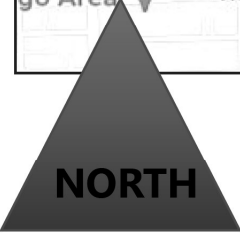
**HARLEM AVE (70TH ST TO 111TH ST)
LANDSCAPE REPAIR & RESTORATION**

SCALE: SHEET OF SHEETS STA. TO STA.

F.A. RTE.	SECTION	COUNTY	TOTAL SHEETS	SHEET NO.
VAR	2023 VAR LANDSCAPE	VARIOUS	27	16
CONTRACT NO. 62V15				
ILLINOIS FED. AID PROJECT				



**HARLEM AVE (70TH ST TO 79TH ST)
WORTH, PALOS HILLS & BRIDGEVIEW, IL**



(SECTION 1 OF 3)

Plant the following at this location:

- 3 – Tree, *Catalpa speciosa* (Northern Catalpa),
2" Caliper, Balled and Burlapped
- 2 – Tree, *Celtis occidentalis* (Common Hackberry),
2" Caliper, Balled and Burlapped
- 4 – Tree, *Gleditsia triacanthos inermis* Skyline
(Skyline Thornless Honeylocust),
2" Caliper, Balled and Burlapped
- 3 – Tree, *Ostrya virginiana* (American Hophornbeam),
2" Caliper, Balled and Burlapped
- 3 – Tree, *Taxodium distichum* (Common Bald Cypress),
2" Caliper, Balled and Burlapped
- 2 – Tree, *Ulmus americana* Princeton
(Princeton American Elm),
2" Caliper, Balled and Burlapped
- 5 – Tree, *Malus Golden Raindrops*
(Gold Raindrops Crabapple),
2" Caliper, Tree Form, Balled and Burlapped
- 2 – Tree, *Malus Profusion* (Profusion Crabapple),
2" Caliper, Tree Form, Balled and Burlapped

Contact for layout:

Steve Lipkie 847.705.4173

MODEL: Default
FILE NAME: \\pwwilliams-jambly.com\NWDOT\Documents\DOT - Offices\District - 1\Project\115323\CAD\DrawStructures\115323-ash-landscape.dgn

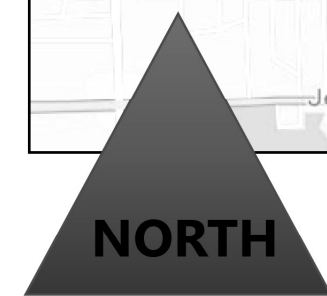
USER NAME = melissa.delrosario	DESIGNED -	REVISED -
	DRAWN -	REVISED -
PLOT SCALE = 100.3156' / in.	CHECKED -	REVISED -
PLOT DATE = 7/12/2023	DATE -	REVISED -

**STATE OF ILLINOIS
DEPARTMENT OF TRANSPORTATION**

**HARLEM AVE (70TH ST TO 111TH ST)
LANDSCAPE REPAIR & RESTORATION**

SCALE: SHEET OF SHEETS STA. TO STA.

F.A. RTE.	SECTION	COUNTY	TOTAL SHEETS	SHEET NO.
VAR	2023 VAR LANDSCAPE	VARIOUS	27	17
				CONTRACT NO. 62V15
ILLINOIS FED. AID PROJECT				



**HARLEM AVE (79TH ST TO 92ND PL)
WORTH, PALOS HILLS & BRIDGEVIEW, IL**

Contact for layout:
Steve Lipkie
847.705.4173

(SECTION 2 OF 3)

Plant the following at this location:

- 3 – Tree, *Acer x freemanii* Marmo (Marmo Freeman Maple), 2" Caliper, Balled and Burlapped
- 2 – Tree, *Catalpa speciosa* (Northern Catalpa), 2" Caliper, Balled and Burlapped
- 2 – Tree, *Celtis occidentalis* (Common Hackberry), 2" Caliper, Balled and Burlapped
- 13 – Tree, *Gleditsia triacanthos inermis* Skyline (Skyline Thornless Honeylocust), 2" Caliper, Balled and Burlapped
- 5 – Tree, *Gymnocladus dioica* (Kentucky Coffeetree), 2-1/2" Caliper, Balled and Burlapped
- 2 – Tree, *Quercus bicolor* (Swamp White Oak), 2" Caliper, Balled and Burlapped
- 7 – Tree, *Tilia americana* Redmond (Redmond American Linden), 2" Caliper, Balled and Burlapped
- 7 – Tree, *Ulmus americana* Princeton (Princeton American Elm), 2" Caliper, Balled and Burlapped
- 6 – Tree, *Malus Profusion* (Profusion Crabapple), 2" Caliper, Balled and Burlapped

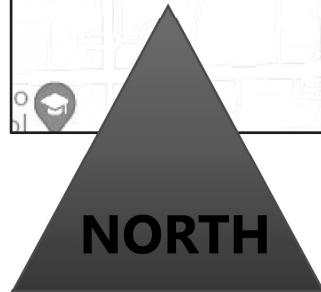
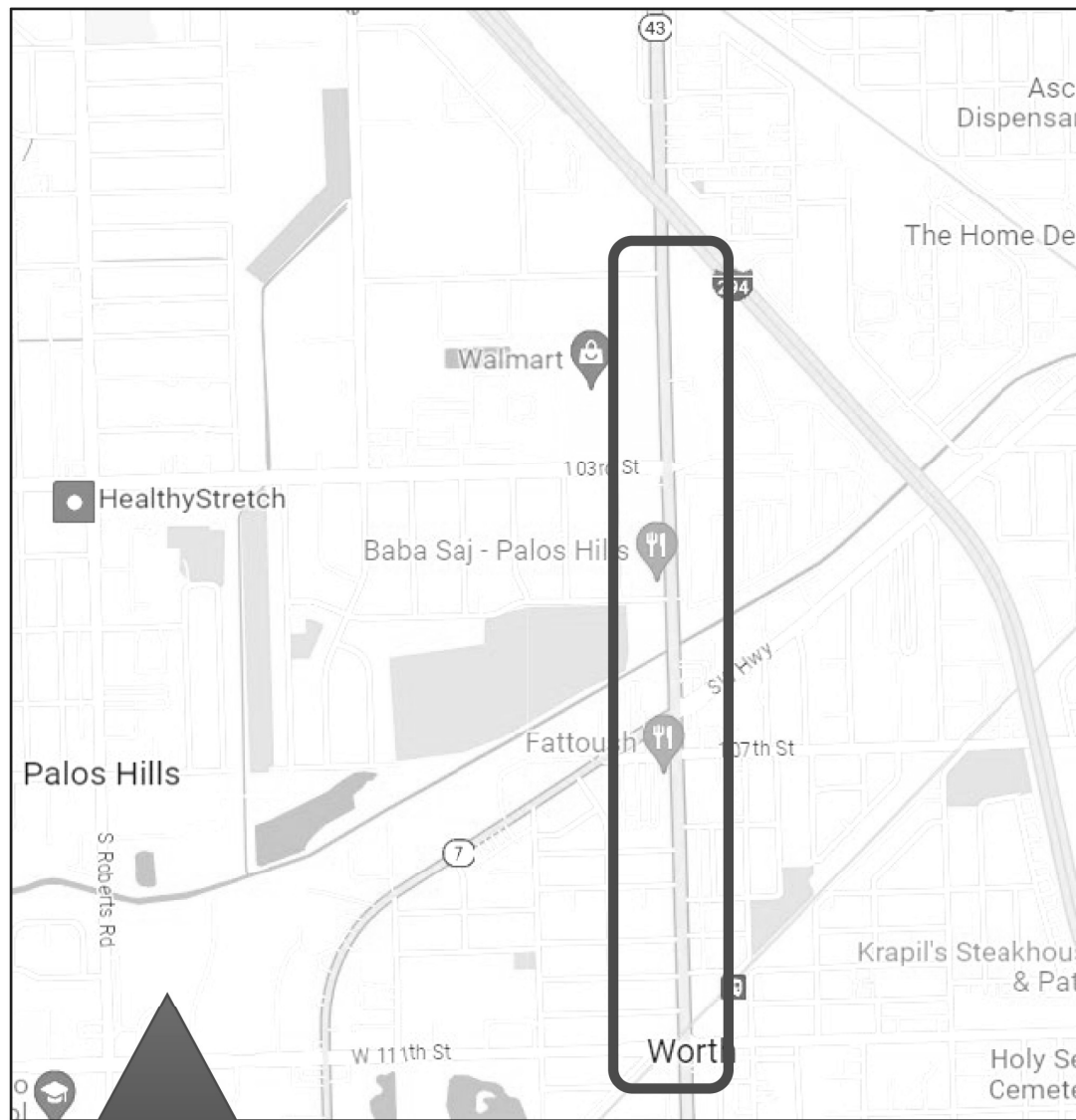
MODEL: Default
FILE NAME: P:\Work\paw_bentley.com\PIV\DOT\Documents\DOT - Offices\B\B\1.ctb - Projects\115232\CAD\B\B\Structures\115232-sh-landscape.dgn

USER NAME = melissa.delrosario	DESIGNED -	REVISED -
	DRAWN -	REVISED -
PLOT SCALE = 100.3156' / in.	CHECKED -	REVISED -
PLOT DATE = 7/12/2023	DATE -	REVISED -

**STATE OF ILLINOIS
DEPARTMENT OF TRANSPORTATION**

HARLEM AVE (79TH ST TO 92ND PL) LANDSCAPE REPAIR & RESTORATION			
SCALE:	SHEET	OF	SHEETS
	STA.		TO STA.

F.A. RTE.	SECTION	COUNTY	TOTAL SHEETS	SHEET NO.
VAR	2023 VAR LANDSCAPE	VARIOUS	27	18
CONTRACT NO. 62V15				
ILLINOIS FED. AID PROJECT				



**HARLEM AVE (100TH PL TO 111TH ST)
WORTH, PALOS HILLS & BRIDGEVIEW, IL**

SECTION 3 OF 3

Plant the following at this location:

- 4 – Tree, *Acer x freemanii* Marmo (Marmo Freeman Maple), 2" Caliper, Balled and Burlapped
- 5 – Tree, *Catalpa speciosa* (Northern Catalpa), 2" Caliper, Balled and Burlapped
- 6 – Tree, *Celtis occidentalis* (Common Hackberry), 2" Caliper, Balled and Burlapped
- 3 – Tree, *Gymnocladus dioica* (Kentucky Coffeetree), 2-1/2" Caliper, Balled and Burlapped
- 6 – Tree, *Quercus bicolor* (Swamp White Oak), 2" Caliper, Balled and Burlapped

Contact for layout:

Steve Lipkie
847.705.4173

MODEL: Default
FILE NAME: P:\muller-epw_bentley.com\FW\DOT\Documents\DOT - Offices\lartfct - l\projects\11323\Cadd\lartfct\11323-shl-landscp.dgn

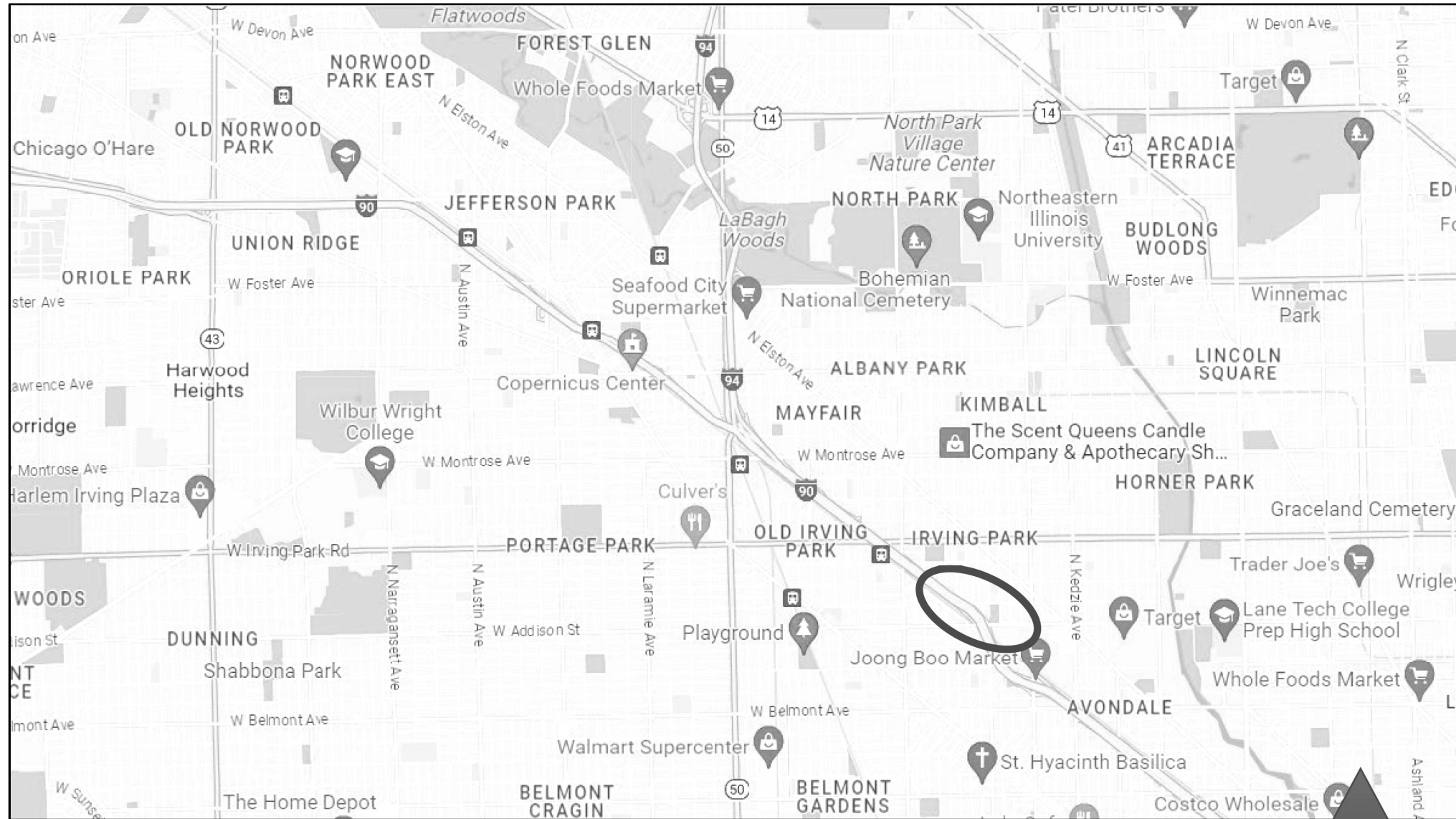
USER NAME = melissa.rosario	DESIGNED -	REVISED -
	DRAWN -	REVISED -
PLOT SCALE = 100.3156' / in.	CHECKED -	REVISED -
PLOT DATE = 7/12/2023	DATE -	REVISED -

**STATE OF ILLINOIS
DEPARTMENT OF TRANSPORTATION**

**HARLEM AVE (100TH PL TO 111TH ST)
LANDSCAPE REPAIR & RESTORATION**

SCALE: SHEET OF SHEETS STA. TO STA.

F.A. RTE.	SECTION	COUNTY	TOTAL SHEETS	SHEET NO.
VAR.	2023 VAR LANDSCAPE	VARIOUS	27	19
CONTRACT NO. 62V15				
ILLINOIS FED. AID PROJECT				



**62V15 – SPRING 2024
I-90 (EB) ADDISON ST EXIT RAMP
CHICAGO, IL**



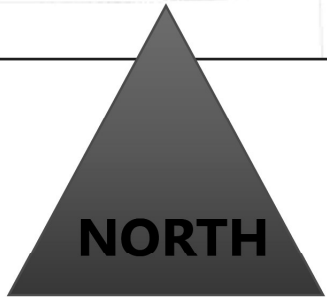
MODEL: Default
 FILE: Model: \\huldas-cw-bentley.com\huldas\Documents\DOT Offices\chicago\1\Projects\62V15\2023\06\01\62V15-23-eh-landscape.dgn

USER NAME = melissa.delrosario	DESIGNED -	REVISED -
	DRAWN -	REVISED -
PLOT SCALE = 100,0535' / in.	CHECKED -	REVISED -
PLOT DATE = 7/12/2023	DATE -	REVISED -

**STATE OF ILLINOIS
DEPARTMENT OF TRANSPORTATION**

I-90 (EB) ADDISON ST EXIT RAMP LANDSCAPE REPAIR & RESTORATION			
SCALE:	SHEET	OF SHEETS	STA. TO STA.

F.A. RTE.	SECTION	COUNTY	TOTAL SHEETS	SHEET NO.
VAR	2023 VAR LANDSCAPE	VARIOUS	27	20
CONTRACT NO. 62V15				
ILLINOIS FED. AID PROJECT				



**I-90 (EB) ADDISON ST EXIT RAMP
CHICAGO, IL**

Contact for layout:
Melissa del Rosario
847.705.4391

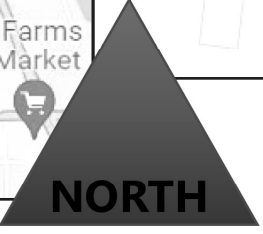
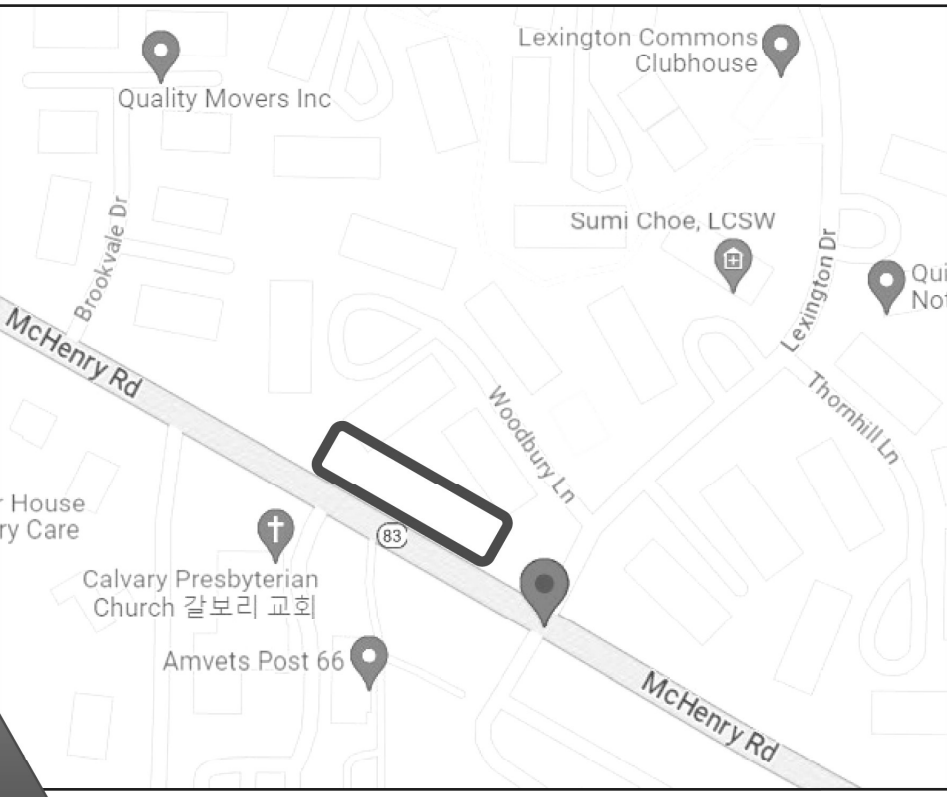
Spring 2024

Plant the following at this location:

- 3 – Tree, Malus Adams (Adams Crabapple),
5' Height, Clump Form, Balled and Burlapped
- 10 – Shrub, Rhus aromatica Gro-low
(Gro-low Fragrant Sumac), 5 – Gallon
- 8 – Shrub, Rosa rugosa Frau Dagmar Hartopp
(Frau Dagmar Hastrup Rugosa Rose),
Container Grown, 5 – Gallon
- 1.19 units – Perennial Plants, Ornamental Type,
Gallon Pot:
 - 15 – Asclepias tuberosa (Butterfly Milkweed)
 - 40 – Calamintha nepeta 'Montrose White'
(Montrose White Calamintha)
 - 19 – Echinacea x 'Julia'
(Butterfly Julia Coneflower)
 - 15 – Monarda didyma 'Pardon My Cerise'
(Pardon My Cerise Beebalm)
 - 15 – Rudbeckia fulgida 'Goldstrum'
(Goldstrum Black-eyed Susan)
 - 15 – Salvia nemorosa 'Mainacht'
May Knight Salvia

MODEL: Default
 FILE: \\atl05bpcv1.bentley.com\PIV\DOT\Documents\DOT Offices\District 1\Projects\01152231\00\03\03\Structure\01152231-eh-landscape.dgn

USER NAME = melissa.delrosario PLOT SCALE = 100,0623' / in. PLOT DATE = 7/12/2023	DESIGNED - DRAWN -	REVISED - REVISED -	STATE OF ILLINOIS DEPARTMENT OF TRANSPORTATION	I-90 EB ADDISON EXIT RAMP LANDSCAPE REPAIR & RESTORATION	F.A. RTE. VAR	SECTION 2023 VAR LANDCAPE	COUNTY VARIOUS	TOTAL SHEETS 27	SHEET NO. 21
	CHECKED - DATE -	REVISED - REVISED -			SCALE:	SHEET OF SHEETS STA. TO STA.	CONTRACT NO. 62V15 ILLINOIS FED. AID PROJECT		



**62V15 – SPRING 2024
IL 83 N/O LEXINGTON DRIVE
WHEELING, IL**

Plant the following at this location:

- 3 – Tree, Quercus robur x bicolor 'Nadler'
(Kindred Spirit Hybrid Oak),
2 " Caliper, Balled and Burlapped

Contact for layout:
Melissa del Rosario
847.705.4391

MODEL: Default
 FILE: \\sdr\p23\62v15\62v15\DOT\Documents\DOT\Office\DelRosario\62v15\62v15-landsc-1.dgn

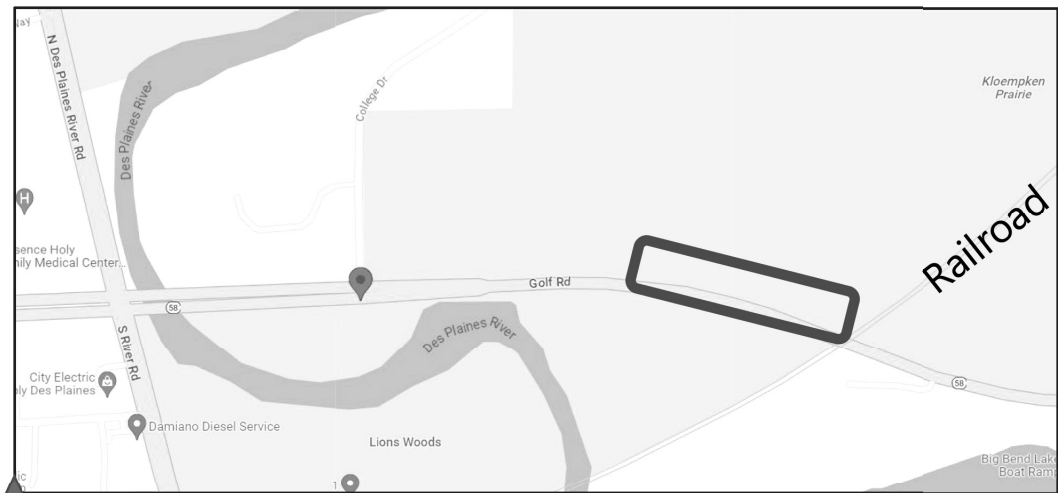
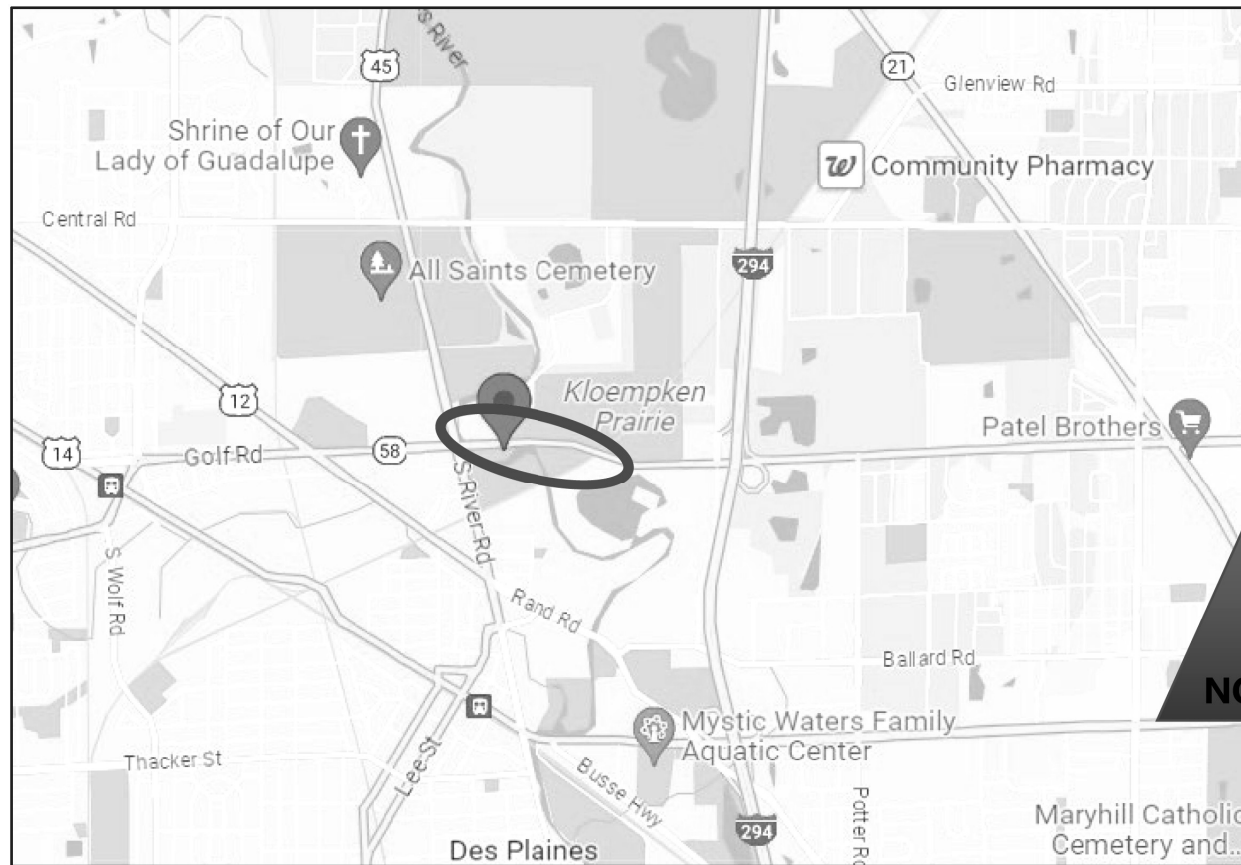
USER NAME = melissa.delrosario	DESIGNED -	REVISED -
PLOT SCALE = 100,0823 ' / in.	DRAWN -	REVISED -
PLOT DATE = 7/12/2023	CHECKED -	REVISED -
	DATE -	REVISED -

**STATE OF ILLINOIS
DEPARTMENT OF TRANSPORTATION**

**IL 83 N/O LEXINGTON DRIVE
LANDSCAPE REPAIR & RESTORATION**

F.A. RTE.	SECTION	COUNTY	TOTAL SHEETS	SHEET NO.
VAR	2023 VAR LANDSCAPE	VARIOUS	27	22
			CONTRACT NO. 62V15	
ILLINOIS FED. AID PROJECT				

SCALE: SHEET OF SHEETS STA. TO STA.



NORTH

Plant the following at this location:

- Interseeding, Class 4A (Modified) – 0.32 acres
- Interseeding, Class 5 (Modified) – 0.32 acres
- Mowing – 0.32 acres

**62V15 – SPRING 2024
IL 58 @ COLLEGE DRIVE
DES PLAINES, IL**

Contact for layout:
Melissa del Rosario
847.705.4391

MODEL: Default
 FILE NAME: \\p01llc-cw-bea\p01\DOT\Documents\DOT_Offices\Dist\62V15\62V15-23\CD\Map\Site\structures\62V15-23-sht-landscape.dgn

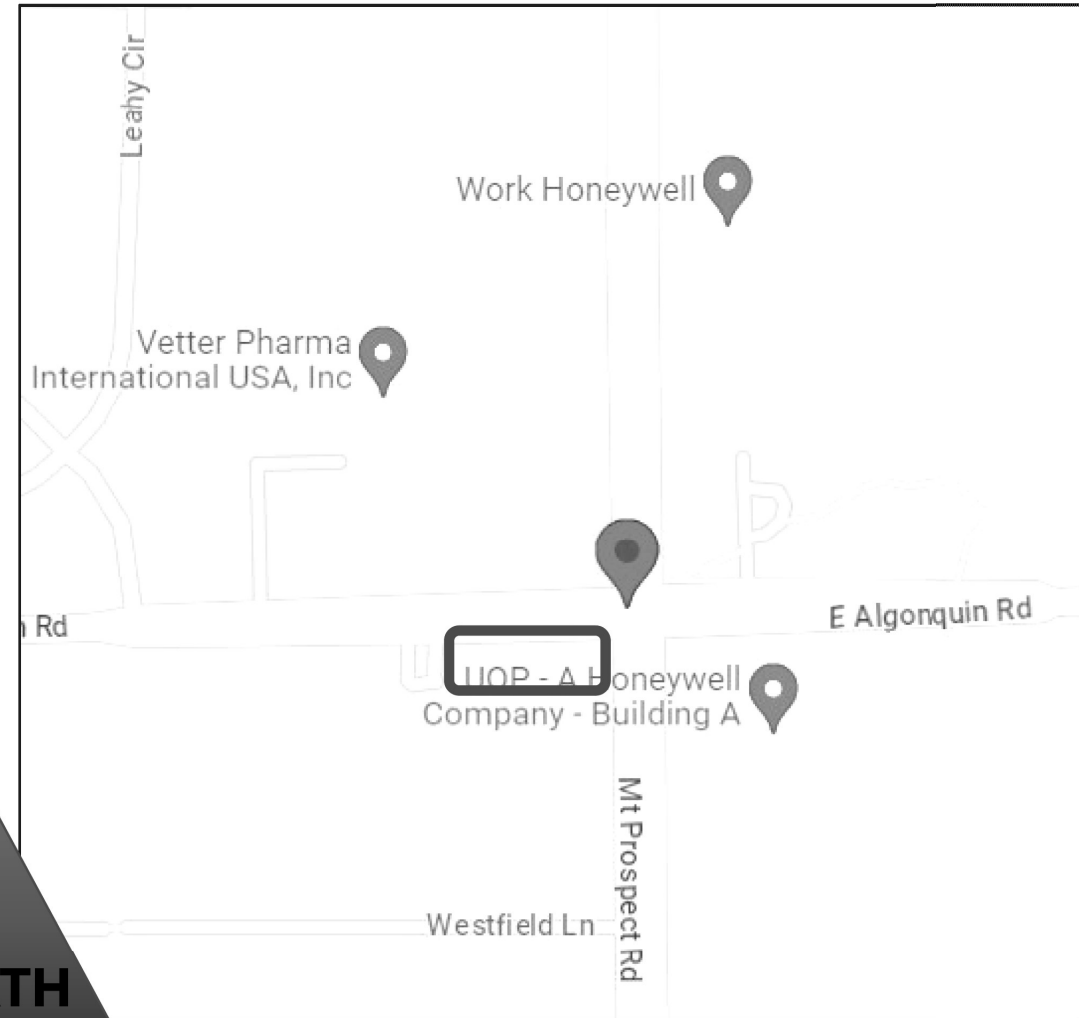
USER NAME = melissa.delrosario	DESIGNED -	REVISED -
	DRAWN -	REVISED -
PLOT SCALE = 100,0906' / in.	CHECKED -	REVISED -
PLOT DATE = 7/12/2023	DATE -	REVISED -

**STATE OF ILLINOIS
DEPARTMENT OF TRANSPORTATION**

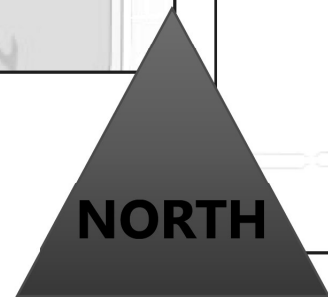
**IL 58 AT COLLEGE DRIVE
LANDSCAPE REPAIR & RESTORATION**

SCALE: SHEET OF SHEETS STA. TO STA.

F.A. RTE.	SECTION	COUNTY	TOTAL SHEETS	SHEET NO.
VAR	2023 VAR LANDSCAPE	VARIOUS	27	23
CONTRACT NO. 62V15			ILLINOIS FED. AID PROJECT	



**62V15 – SPRING 2024
MOUNT PROSPECT RD & ALGONQUIN RD
DES PLAINES, IL**



Contact for layout:
Melissa del Rosario
847.705.4391

Plant the following at this location:

- Seeding, Class 2A – 0.03 acres
- Topsoil Furnish & Place, 2" – 145 sq yds
- Nitrogen Fertilizer Nutrient – 3 pounds
- Phosphorous Fertilizer Nutrient – 3 pounds
- Potassium Fertilizer Nutrient – 3 pounds
- Erosion Control Blanket – 145 sq yds

MODEL: Default
 FILE NAME: \\w:\illinois-contract\62V15\DOT\Documents\DOT_Offices\District_1\Projects\62V15\2023\CADD\BasisStructures\62V1523-sh-h-jandresca.dwg

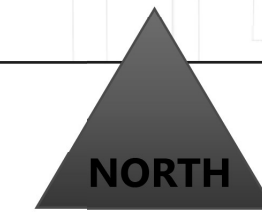
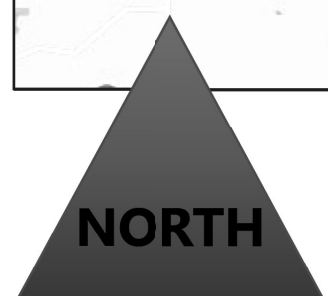
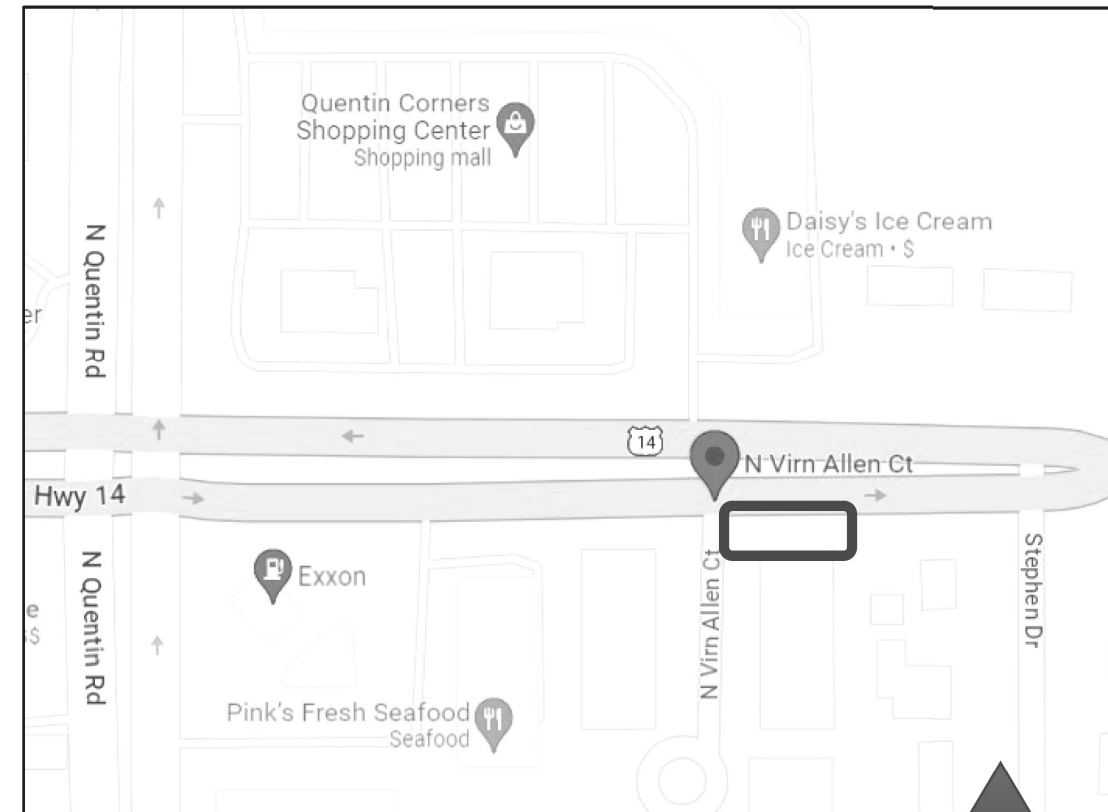
USER NAME = melissa.delrosario	DESIGNED -	REVISED -
	DRAWN -	REVISED -
PLOT SCALE = 100.1176' / in.	CHECKED -	REVISED -
PLOT DATE = 7/12/2023	DATE -	REVISED -

**STATE OF ILLINOIS
DEPARTMENT OF TRANSPORTATION**

**MOUNT PROSPECT RD & ALGONQUIN RD
LANDSCAPE REPAIR & RESTORATION**

SCALE: SHEET OF SHEETS STA. TO STA.

F.A. RTE.	SECTION	COUNTY	TOTAL SHEETS	SHEET NO.
VAR	2023 VAR LANDSCAPE	VARIOUS	27	24
CONTRACT NO. 62V15				
ILLINOIS FED. AID PROJECT				



**62V15 – SPRING 2024
N VIRN ALLEN CT & US 14
PALATINE, IL**

Plant the following at this location:

- 6 – Tree, Malus 'JFS KW139MX'
(Ruby Daze Crabapple),
2" Caliper, Tree Form, Balled and Burlapped

Contact for layout:

Brian Kolasa
312.826.5997

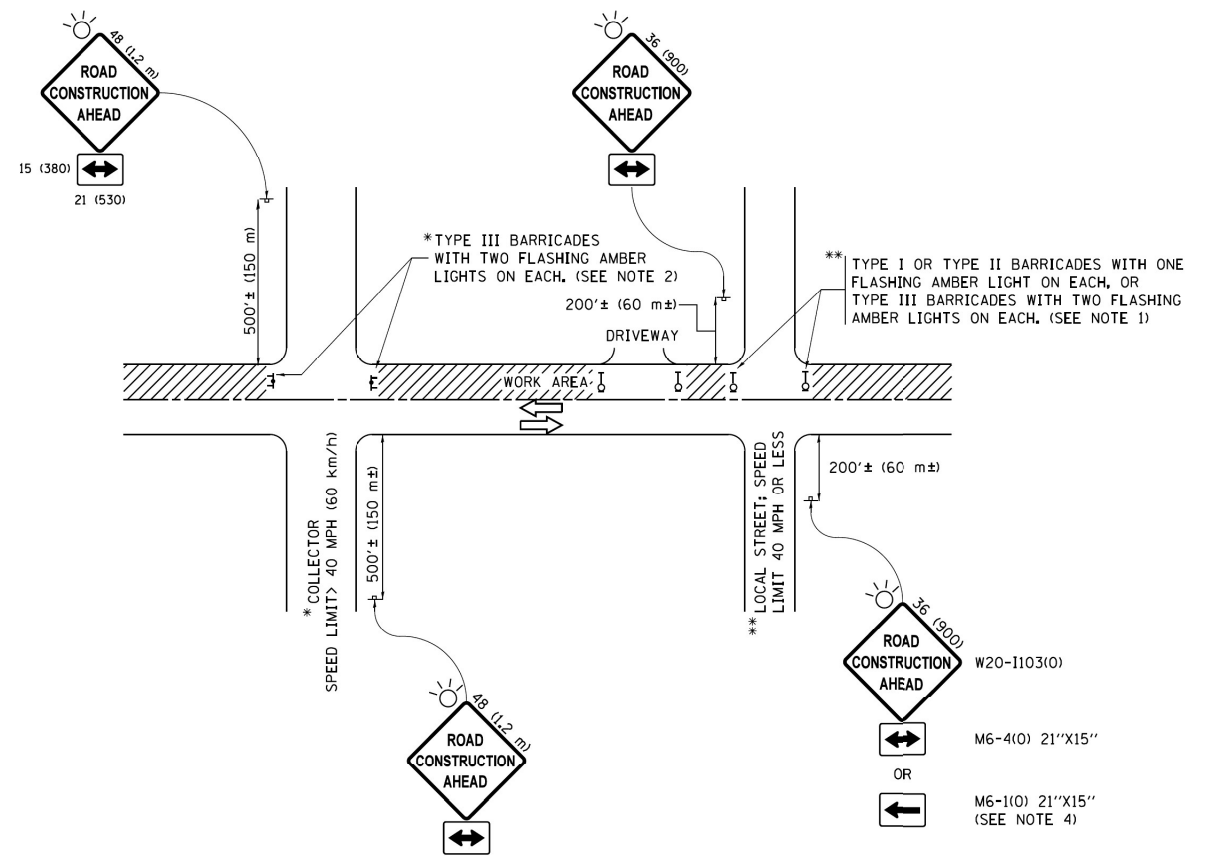
MODEL: Default
 FILE NAME: I:\work\62v15\62v15.dwg
 PROJECT: 62V15 - SPRING 2024
 USER: melissa.delrosario

USER NAME = melissa.delrosario	DESIGNED -	REVISED -
PLOT SCALE = 100.1176' / in.	DRAWN -	REVISED -
PLOT DATE = 7/12/2023	CHECKED -	REVISED -
	DATE -	REVISED -

**STATE OF ILLINOIS
DEPARTMENT OF TRANSPORTATION**

N VIRN ALLEN CT & US 14 LANDSCAPE REPAIR & RESTORATION			
SCALE:	SHEET	OF SHEETS	STA. TO STA.

F.A. RTE.	SECTION	COUNTY	TOTAL SHEETS	SHEET NO.
VAR	2023 VAR LANDSCAPE	VARIOUS	27	25
CONTRACT NO. 62V15				
ILLINOIS FED. AID PROJECT				



NOTES:

1. SIDE ROAD WITH A SPEED LIMIT OF 40 MPH (60 km/h) OR LESS AS SHOWN ON THE DRAWING AND AS DIRECTED BY THE ENGINEER:
 - a) ONE "ROAD CONSTRUCTION AHEAD" SIGN 36 x 36 (900x900) WITH A FLASHER MOUNTED ON IT APPROXIMATELY 200' (60 m) IN ADVANCE OF THE MAIN ROUTE.
 - b) THE CLOSED PORTION OF THE MAIN ROUTE SHALL BE PROTECTED BY BLOCKING WITH TYPE I, TYPE II OR TYPE III BARRICADES, 1/3 OF THE CROSS SECTION OF THE CLOSED PORTION.
2. SIDE ROAD WITH A SPEED LIMIT GREATER THAN 40 MPH (60 km/h) AS SHOWN ON THE DRAWING AND AS DIRECTED BY THE ENGINEER:
 - a) ONE "ROAD CONSTRUCTION AHEAD" SIGN 48 x 48 (1.2 m x 1.2 m) WITH A FLASHER MOUNTED ON IT APPROXIMATELY 500' (150 m) IN ADVANCE OF THE MAIN ROUTE.
 - b) THE CLOSED PORTION OF THE MAIN ROUTE SHALL BE PROTECTED BY BLOCKING WITH TYPE III BARRICADES, 1/2 OF THE CROSS SECTION OF THE CLOSED PORTION.
3. CONES MAY BE SUBSTITUTED FOR BARRICADES OR DRUMS AT HALF THE SPACING DURING DAY OPERATIONS. CONES SHALL BE A MINIMUM OF 28 (710) IN HEIGHT.
4. WHEN THE SIDE ROAD LIES BETWEEN THE BEGINNING OF THE MAINLINE SIGNING AND THE WORK ZONE, A SINGLE HEADED ARROW (M6-1) SHALL BE USED IN LIEU OF THE DOUBLE HEADED ARROW (M6-4).
5. WHEN WORK IS BEING PERFORMED ON A SIDE ROAD OR DRIVEWAY, FOLLOW THE APPLICABLE STANDARD(S). THE DIRECTIONAL ARROW (M6-1 OR M6-4) SHALL BE COVERED OR REMOVED WHEN NO LONGER CONSISTENT WITH THE TRAFFIC CONTROL SET-UP.
6. ADVANCE WARNING SIGNS ARE TO BE OMITTED ON DRIVEWAYS UNLESS OTHERWISE SPECIFIED IN THE PLANS OR BY THE ENGINEER.
7. THE TRAFFIC CONTROL AND PROTECTION FOR SIDE ROADS, INTERSECTIONS, AND DRIVEWAYS SHALL BE INCLUDED IN THE COST OF SPECIFIED TRAFFIC CONTROL STANDARDS OR ITEMS.

All dimensions are in inches (millimeters) unless otherwise shown.

MODEL: Default
 FILE NAME: c:\p1\lancapw_bentley.com\p1\dot\Documents\DOT Offices\District 1\Projects\ID115323\CADD\Drawings\ID115323-014-landsr.dgn

USER NAME = melissa.delrosario	DESIGNED -	REVISED -
	DRAWN -	REVISED -
PLOT SCALE = 99.9912 ' / in.	CHECKED -	REVISED -
PLOT DATE = 7/12/2023	DATE -	REVISED -

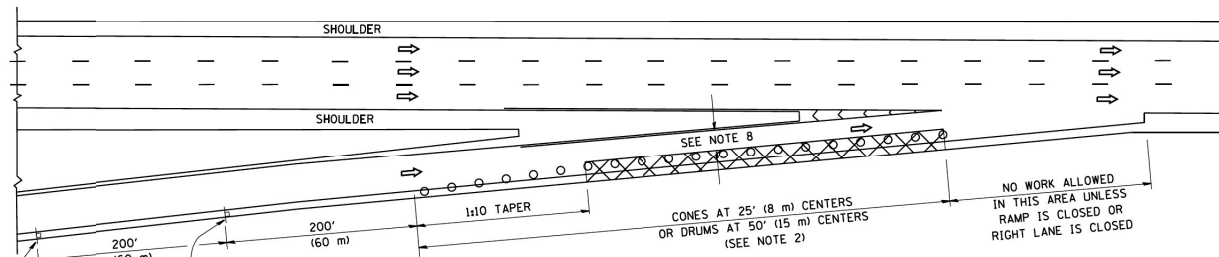
**STATE OF ILLINOIS
DEPARTMENT OF TRANSPORTATION**

**TRAFFIC CONTROL AND PROTECTION FOR SIDE
ROADS, INTERSECTIONS, AND DRIVEWAYS (TC-10)**

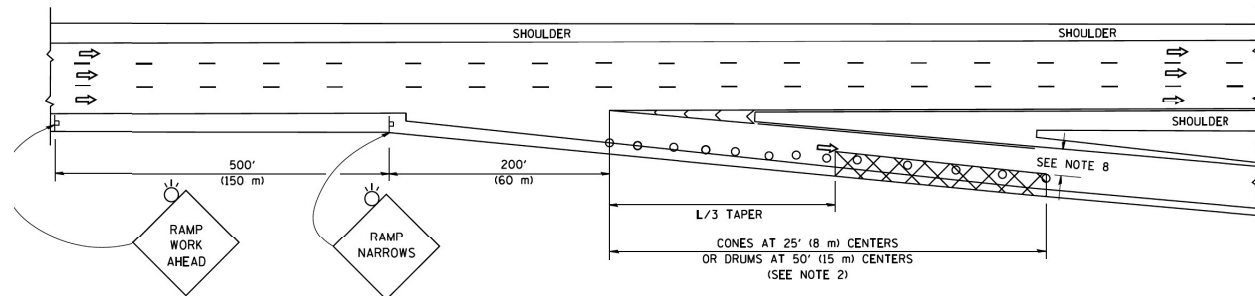
F.A. * RTE.	SECTION	COUNTY	TOTAL SHEETS	SHEET NO.
VAR	2023 VAR LANDSCAPE	VARIOUS	27	26
CONTRACT NO. 62V15				
ILLINOIS FED. AID PROJECT				

SCALE: SHEET OF SHEETS STA. TO STA.

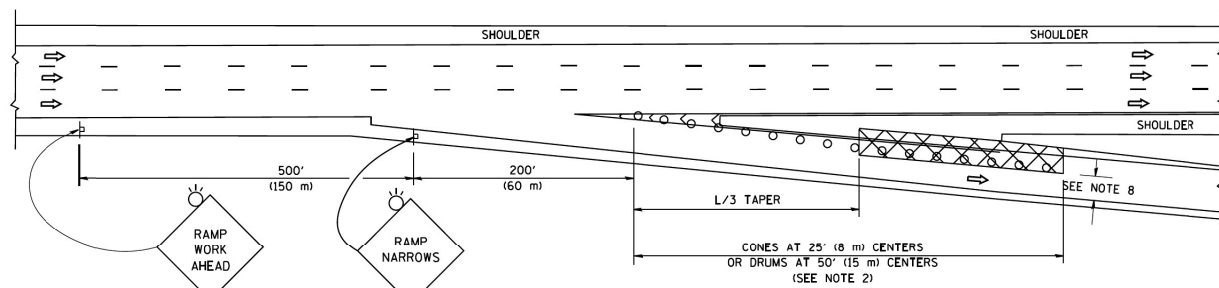
PARTIAL RAMP CLOSURE DETAILS



TYPICAL ENTRANCE RAMP



TYPICAL EXIT RAMP



TYPICAL EXIT RAMP

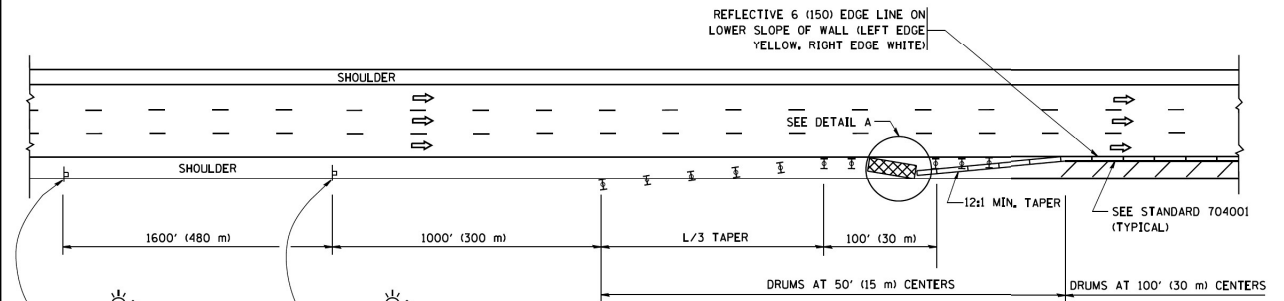
SYMBOLS

- ACTIVE WORK AREA
- SIGN ON PORTABLE OR PERMANENT SUPPORT
- FLAGGER WITH CONTROL SIGN
- TYPE II BARRICADE OR DRUM
- CONE, DRUM OR BARRICADE
- IMPACT ATTENUATOR OF TYPE AND TEST LEVEL SPECIFIED

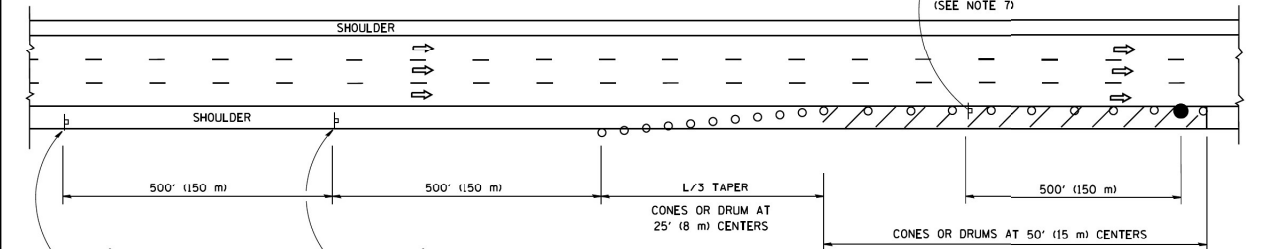
GENERAL NOTES

1. THE "L" DISTANCE EQUALS:
SPEED LIMIT FORMULAS
45 mph (80 km/h) METRIC ENGLISH
OR GREATER L=0.65(W/S) L=(W/S)
W = WIDTH OF OFFSET IN FEET (METERS)
S = NORMAL POSTED SPEED MPH (KM/H)
2. TYPE II BARRICADES OR DRUMS ARE REQUIRED FOR ALL NIGHTTIME CLOSURES. TYPE II BARRICADES OR DRUMS WITH MONODIRECTIONAL STEADY BURN LIGHTS ARE REQUIRED FOR DELINEATING OBSTACLES, EXCAVATIONS, OR HAZARDS EXCEEDING 100 FT (30m) IN LENGTH AT NIGHT.
3. ALL SIGNS SHALL BE POST MOUNTED IF THE CLOSURE TIME EXCEEDS FOUR DAYS.
4. FLASHING LIGHTS SHALL BE USED DURING THE HOURS OF DARKNESS AND SHALL BE INSTALLED ABOVE THE FIRST TWO SETS OF SIGNS.

SHOULDER CLOSURE DETAILS



PERMANENT SHOULDER CLOSURE



DAYTIME SHOULDER CLOSURE

OR WHEN SPECIFIED INSTALL TEMPORARY CONCRETE BARRIER WALL WITH BARRIER WALL REFLECTORS PER TRAFFIC CONTROL AND PROTECTION (EXPRESSWAYS)

THIS DETAIL IS USED WHERE:
1. VEHICLES, EQUIPMENT, WORKERS OR THEIR ACTIVITIES ENCR OACH IN AN AREA CLOSER THAN 15' (4.5 m) TO THE EDGE OF PAVEMENT FOR A PERIOD IN EXCESS OF 15 MINUTES.

ARRAY DESIGN PER MANUFACTURER TO BE NCHRP 350/MASH COMPLIANT.

DETAIL "A"
IMPACT ATTENUATOR, TEMPORARY
(SEE NOTE 5)

ALL DIMENSIONS ARE IN INCHES (MILLIMETERS) UNLESS OTHERWISE SHOWN.

MODEL Path: \\p101\share\paw_bentley.com\PIW\DOT\Documents\DOT Office\District 1\Projects\115323\CADD\115323\Structures\115323-struct-landscape.dgn
FILE NAME: \\p101\share\paw_bentley.com\PIW\DOT\Documents\DOT Office\District 1\Projects\115323\CADD\115323\Structures\115323-struct-landscape.dgn

USER NAME = melissa.delrosario	DESIGNED -	REVISED -
PLOT SCALE = 100,1807' / in.	DRAWN -	REVISED -
PLOT DATE = 7/12/2023	CHECKED -	REVISED -
	DATE -	REVISED -

STATE OF ILLINOIS
DEPARTMENT OF TRANSPORTATION

TRAFFIC CONTROL DETAIL FOR FREEWAY SHOULDER
CLOSURES AND PARTIAL RAMP CLOSURE (TC-17)

SCALE: SHEET OF SHEETS STA. TO STA.

F.A. RTE.	SECTION	COUNTY	TOTAL SHEETS	SHEET NO.
VAR	2023 VAR LANDSCAPE	VARIOUS	27	27
CONTRACT NO. 62V15				
ILLINOIS FED. AID PROJECT				