

STATE OF ILLINOIS
DEPARTMENT OF TRANSPORTATION

| | | | | |
|-------------|--------------|----------|--------------------|-----------|
| F.A. R.T.E. | SECTION | COUNTY | TOTAL SHEETS | SHEET NO. |
| VAR | 2023 TREE 01 | VARIOUS | 9 | 1 |
| | | ILLINOIS | CONTRACT NO. 62V19 | |

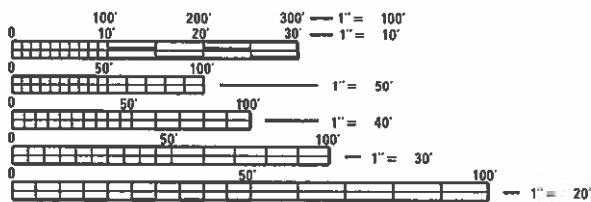
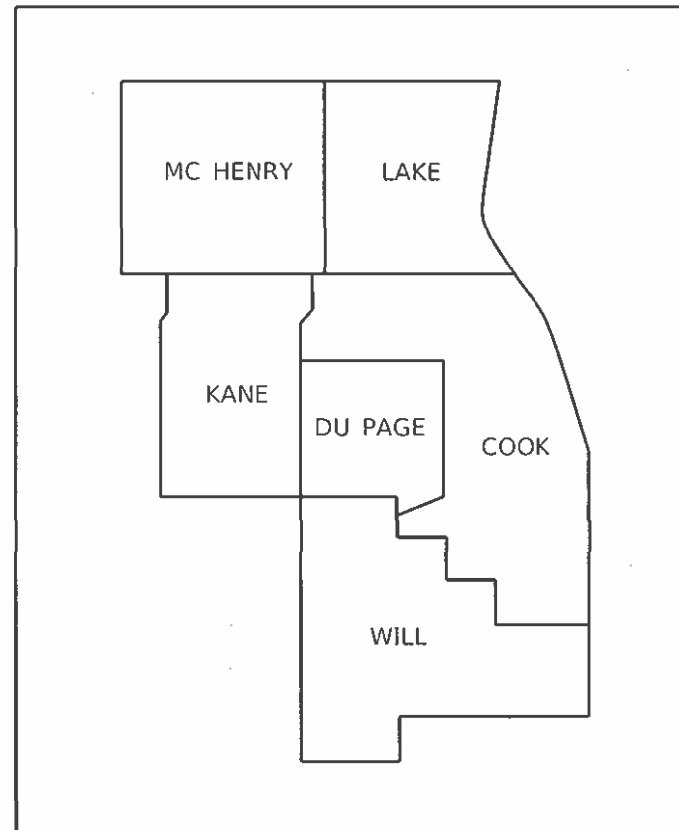
FOR INDEX OF SHEETS, SEE SHEET NO. 2

**PROPOSED
HIGHWAY PLANS**

ROUTE: VARIOUS
SECTION 2023 VAR Tree Removal
PROJECT N/A
DEAD TREE REMOVAL
VARIOUS COUNTIES

IMPROVEMENTS ARE AT VARIOUS LOCATIONS
WITHIN DISTRICT ONE

C-91-224-23



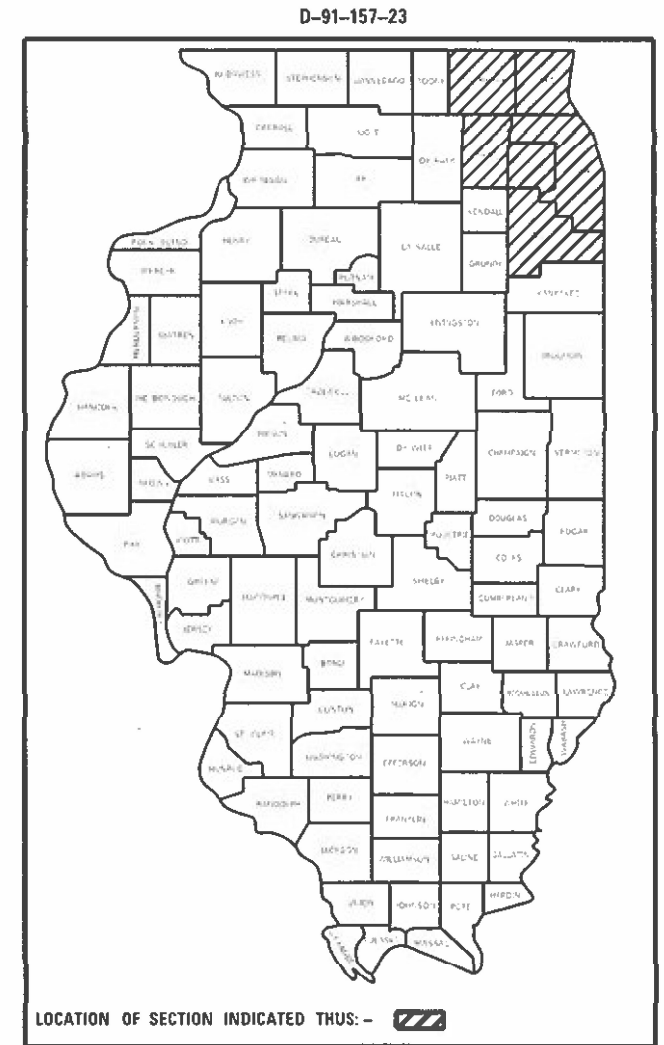
FULL SIZE PLANS HAVE BEEN PREPARED USING STANDARD ENGINEERING SCALES. REDUCED SIZED PLANS WILL NOT CONFORM TO STANDARD SCALES. IN MAKING MEASUREMENTS ON REDUCED PLANS, THE ABOVE SCALES MAY BE USED.

J.U.L.I.E.
JOINT UTILITY LOCATION INFORMATION FOR EXCAVATORS
1-800-892-0123
OR 811

PROJECT ENGINEER JAMES STUMPNER
PROJECT MANAGER GIOVANNA ZAFFINA (847) 705-4171

CONTRACT NO. 62V19

GROSS LENGTH = x.xx FT. = x.xxx MILE
NET LENGTH = x.xx FT. = x.xxx MILE



STATE OF ILLINOIS
DEPARTMENT OF TRANSPORTATION

SUBMITTED July 7 2023
Jan Ross REGIONAL ENGINEER

August 18, 2023 Jan Ross
ENGINEER OF DESIGN AND ENVIRONMENT

August 18, 2023 Steph McAvoy
DIRECTOR OF HIGHWAYS PROJECT IMPLEMENTATION

PRINTED BY THE AUTHORITY
OF THE STATE OF ILLINOIS

INDEX OF SHEETS

| SHEET NO. | DESCRIPTION |
|-----------|---|
| 1 | COVER SHEET |
| 2 | INDEX OF SHEETS, HIGHWAY STANDARDS, GENERAL NOTES |
| 3 | SUMMARY OF QUANTITIES |
| 4 | LOCATION AND WORK SCHEDULE |
| 5 | SAMPLE WORK ORDERS |
| 6 | STUMP DETAILS |
| 7 | PRUNING FOR SAFETY AND EQUIPMENT CLEARANCE |
| 8 | TRAFFIC CONTROL AND PROTECTION FOR SIDE ROADS, INTERSECTIONS, & DRIVEWAYS (TC-10) |
| 9 | TRAFFIC CONTROL DETAIL FOR FREEWAY SHOULDER CLOSURES AND PARTIAL RAMP CLOSURE (TC-17) |

HIGHWAY STANDARDS

| STANDARD NO. | DESCRIPTION |
|--------------|--|
| 701001-02 | OFF-ROAD OPERATIONS, 2L, 2W, MORE THAN 15' AWAY |
| 701006-05 | OFF-ROAD OPERATIONS, 2L, 2W, 15' TO 24" FROM PAVEMENT |
| 701106-02 | OFF-ROAD OPERATIONS, MORE THAN 15' AWAY |
| 701201-05 | LANE CLOSURE, 2L, 2W, DAY ONLY, FOR SPEEDS \geq 45 MPH |
| 701301-04 | LANE CLOSURE, 2L, 2W, SHORT TIME OPERATIONS |
| 701311-03 | LANE CLOSURE 2L, 2W MOVING OPERATIONS - DAY ONLY |
| 701421-08 | LANE CLOSURE, MULTILANE, DAY OPERATION ONLY, FOR SPEEDS \geq 45 MPH TO 55 MPH |
| 701422-10 | LANE CLOSURE, MULTILANE, FOR SPEEDS \geq 45 MPH TO 55 MPH |
| 701427-05 | LANE CLOSURE, MULTILANE, INTERMITTENT OR MOVING OPERATIONS, FOR SPEEDS \leq 40 MPH |
| 701501-06 | URBAN LANE CLOSURE, 2L, 2W, UNDIVIDED |
| 701502-09 | URBAN LANE CLOSURE, 2L, 2W, BI-DIRECTIONAL LEFT TURN LANE |
| 701601-09 | URBAN LANE CLOSURE, MULTILANE, 1W OR 2W WITH NON-TRAVERSABLE MEDIAN |
| 701606-10 | URBAN SINGLE LANE CLOSURE, MULTILANE, 2W WITH MOUNTABLE MEDIAN |
| 701611-01 | URBAN HALF CLOSURE, MULTILANE, 2W WITH MOUNTABLE MEDIAN |
| 701701-10 | URBAN LANE CLOSURE, MULTILANE INTERSECTION |
| 701801-06 | SIDEWALK, CORNER OR CROSSWALK CLOSURE |
| 701901-08 | TRAFFIC CONTROL DEVICES |

GENERAL NOTES

- BEFORE STARTING ANY EXCAVATION, THE CONTRACTOR SHALL CALL "J.U.L.I.E." AT (800) 892-0123 OR 811 FOR FIELD LOCATIONS OF BURIED ELECTRIC, TELEPHONE AND GAS UTILITIES. (48 HOUR NOTIFICATION IS REQUIRED).
- THE CONTRACTOR WILL NOT BE ALLOWED TO SET UP A YARD OR FIELD OFFICE ON STATE PROPERTY WITHOUT WRITTEN PERMISSION FROM THE DEPARTMENT.
- IT SHALL BE THE CONTRACTOR'S RESPONSIBILITY TO VERIFY ALL CONDITIONS EXISTING IN THE FIELD PRIOR TO STARTING WORK ORDERS.
- THE CONTRACTOR SHALL CONTACT DISTRICT ONE TRAFFIC CONTROL SUPERVISOR AT (847) 705-4470 A MINIMUM OF 72 HOURS IN ADVANCE OF BEGINNING WORK.
- THE CONTRACTOR SHALL REQUEST AND GAIN APPROVAL FROM THE ILLINOIS DEPARTMENT OF TRANSPORTATION'S EXPRESSWAY TRAFFIC OPERATIONS ENGINEER AT WWW.IDOTLCS.COM TWENTY-FOUR (24) HOURS IN ADVANCE OF ALL DAILY LANE, RAMP AND SHOULDER CLOSURES AND 7 DAYS IN ADVANCE OF ALL PERMANENT AND WEEKEND CLOSURES AND 7 DAYS IN ADVANCE OF ALL PERMANENT AND WEEKEND CLOSURES ON ALL FREEWAYS AND/OR EXPRESSWAYS IN DISTRICT ONE. THIS ADVANCE NOTIFICATION IS CALCULATED BASED ON WORKWEEK OF MONDAY THROUGH FRIDAY AND SHALL NOT INCLUDE WEEKENDS OR HOLIDAYS.
- THE CONTRACTOR SHALL BE REQUIRED TO PROVIDE ACCESS TO ABUTTING PROPERTY AT ALL TIMES DURING THE CONSTRUCTION OF THIS PROJECT.
- THE CONTRACTOR SHALL USE CARE IN TREE REMOVAL OPERATIONS NEAR ANY AND ALL EXISTING ITEMS THAT WILL NOT BE REMOVED. ANY DAMAGE DONE TO EXISTING ITEMS BY THE CONTRACTOR SHALL BE REPAIRED AT THE CONTRACTOR'S OWN EXPENSE TO THE SATISFACTION OF THE ENGINEER.
- THE CONTRACTOR SHALL MAINTAIN PEDESTRIAN ACCESS AT ALL TIMES DURING CONSTRUCTION.
- THE CONSTRUCTION LIMITS WILL BE STAKED AND APPROVED BY THE ENGINEER PRIOR TO COMMENCING CONSTRUCTION. THE CONSTRUCTION LIMITS MAY BE ADJUSTED BY THE ENGINEER TO PRESERVE TREES AND NO ADDITIONAL COMPENSATION WILL BE PAID TO THE CONTRACTOR FOR CHANGES IN CONSTRUCTION LIMITS.
- DURING CONSTRUCTION OPERATIONS, WHEN ANY LOOSE MATERIAL IS DEPOSITED IN THE FLOW LINE OF DITCHES, GUTTERS, OR DRAINAGE STRUCTURES SO THAT THE NATURAL FLOW OF WATER IS OBSTRUCTED, THE MATERIAL SHALL BE REMOVED AT THE CLOSE OF EACH WORKING DAY. THIS WORK IS CONSIDERED AS PART OF CLEAN-UP.
- To conserve the NLEB, trees shall not be removed between April 1 and October 30 of any given year.
- THE CONTRACTOR SHALL ADHERE TO ARTICLE 107.23 OF THE CURRENT IDOT STANDARD SPECIFICATIONS BOOK.
- WHEN HERBICIDE WORK IS SPECIFIED AND AUTHORIZED, THE CONTRACTOR SHALL HAVE A LICENSED APPLICATOR ON THE WORK SITE TO PERFORM SAID WORK UNDER THE DIRECT SUPERVISION OF THE RESIDENT ENGINEER.
- TREE REMOVAL PLANS WILL BE GIVEN AT THE PRECONSTRUCTION MEETING.

MOBEL_Default
FILE NAME: \\w:\idot\pw\benitley.com\PWIDOT\Documents\IDOT_Offices\District 1\Projects\0114921\CADData\Structures\0114921-shl-gmmate.dgn

| | | |
|--------------------------------|------------|-----------|
| USER NAME = melissa.delrosario | DESIGNED - | REVISED - |
| | DRAWN - | REVISED - |
| PLOT SCALE = 100 0441' / in. | CHECKED | REVISED |
| PLOT DATE = 7/13/2023 | DATE - | REVISED - |

**STATE OF ILLINOIS
DEPARTMENT OF TRANSPORTATION**

**DEAD TREE REMOVAL
INDEX OF STREETS, STATE STANDARDS, & GENERAL NOTES**

SCALE: SHEET OF SHEETS STA. TO STA.

| F.A. RTE. | SECTION | COUNTY | TOTAL SHEETS | SHEET NO. |
|--------------------|-----------------------|---------|-----------------------------|-----------|
| VAR | 2023 VAR TREE REMOVAL | VARIOUS | 9 | 2 |
| CONTRACT NO. 62V19 | | | ILLINOIS FED. AID PROJECT | |

| SUMMARY OF QUANTITIES | | | CONSTRUCTION TYPE CODE | | | | |
|-----------------------|--|-------|------------------------|-----------------|-----------------|--|--|
| CODE NO | ITEM | UNIT | TOTAL QUANTITIES URBAN | 100% STATE 0031 | 100% STATE 0031 | | |
| 20100110 | TREE REMOVAL (6 TO 15 UNITS DIAMETER) | UNIT | 5500 | 3500 | 2000 | | |
| 20100210 | TREE REMOVAL (OVER 15 UNITS DIAMETER) | UNIT | 5965 | 4000 | 1965 | | |
| 20101300 | TREE PRUNING (1 TO 10 INCH DIAMETER) | EACH | 90 | 15 | 75 | | |
| 20101350 | TREE PRUNING (OVER 10 INCH DIAMETER) | EACH | 175 | 90 | 85 | | |
| 67100100 | MOBILIZATION | L SUM | 1 | 0.5 | 0.5 | | |
| X2010106 | TREE REMOVAL (UNDER 6 UNITS DIAMETER) | UNIT | 596 | 270 | 326 | | |
| X2010100 | TREE LIMB REMOVAL (4 TO 10 INCHES DIAMETER) | EACH | 25 | 25 | | | |
| X2010101 | TREE LIMB REMOVAL (4 TO 10 INCHES DIAMETER), EXPEDITED | EACH | 10 | 10 | | | |
| X2010110 | TREE REMOVAL (6 TO 15 UNITS DIAMETER) EXPEDITED | UNIT | 85 | 85 | | | |
| X2010200 | TREE LIMB REMOVAL (OVER 10 INCHES DIAMETER) | EACH | 25 | 25 | | | |
| X2010201 | TREE LIMB REMOVAL (OVER 10 INCHES DIAMETER), EXPEDITED | EACH | 10 | 10 | | | |
| X2010210 | TREE REMOVAL (OVER 15 UNITS DIAMETER), EXPEDITED | UNIT | 500 | 500 | | | |
| X2010310 | TREE REMOVAL (SPECIAL) | UNIT | 169 | 5 | 164 | | |

| SUMMARY OF QUANTITIES | | | CONSTRUCTION TYPE CODE | | | | |
|-----------------------|---|------|------------------------|-----------------|-----------------|--|--|
| CODE NO | ITEM | UNIT | TOTAL QUANTITIES URBAN | 100% STATE 0031 | 100% STATE 0031 | | |
| X2010350 | TREE REMOVAL, ACRES (SPECIAL) | ACRE | 14 | 8 | 6 | | |
| X2010400 | STUMP REMOVAL ONLY | UNIT | 321 | 125 | 196 | | |
| X2011300 | TREE PRUNING (1 TO 10 INCH DIAMETER), EXPEDITED | EACH | 10 | 10 | | | |
| X2011350 | TREE PRUNING (OVER 10 INCH DIAMETER), EXPEDITED | EACH | 10 | 10 | | | |
| X2100002 | PRUNING FOR SAFETY AND EQUIPMENT CLEARANCE | UNIT | 126 | 75 | 51 | | |
| Z0064600 | SELECTIVE CLEARING | ACRE | 68 | | 68 | | |
| Z0064800 | SELECTIVE CLEARING | UNIT | 84 | | 48 | | |

| | | | | | | | | | | |
|---|------------------------------|------------|---|---|--|-----------------------|---------|--------|--------------|-----------|
| FILE NAME = | USER NAME = meflsadelrosario | DESIGNED - | REVISED - | STATE OF ILLINOIS DEPARTMENT OF TRANSPORTATION | DEAD TREE REMOVAL SUMMARY OF QUANTITIES | F.A. RTE. | SECTION | COUNTY | TOTAL SHEETS | SHEET NO. |
| pw\vidot-pw\bartley.com\PIWDOT\Documents\VDOT_011025\District\Projects\01492\NCAD\01492\Structures\01492-Str- | DRAWN - | REVISED - | VAR | | | 2023 VAR TREE REMOVAL | VARIOUS | 9 | 3 | |
| PLOT SCALE = 1/8" = 1' / 1" | CHECKED - | REVISED - | CONTRACT NO. 62V19 | | | | | | | |
| PLOT DATE = 7/13/2023 | DATE - | REVISED - | FED. ROAD DIST. NO. 1 ILLINOIS FED. AID PROJECT | | | | | | | |
| | | | | SCALE: | SHEET NO. OF SHEETS | STA. TO STA. | | | | |

| DESCRIPTION | UNIT OF MEASUREMENT | TOTAL CONTRACT QUANTITY | VARIOUS TOTAL QUANTITY | I-290 TOTAL QUANTITY | LOCATIONS | | | | | | | | | |
|--|---------------------|-------------------------|------------------------|----------------------|--|--------------------------------------|---|---------------------------------|--|---------------------------------------|--|--|---|--------------------------------------|
| | | | | | CENTRAL COOK | | SOUTH COOK | DUPAGE | WILL | | MCHENRY | LAKE | | VARIOUS |
| | | | | | I-290 US 45 TO MORGAN ST (BELLWOOD/WESTCHESTER/BROADVIEW/WAYWOOD/FOREST PARK/OAK PARK/CHICAGO) | 1ST AVENUE I-290 TO 26TH (RIVERSIDE) | US 45 IL 83 TO 131ST ST (PALOS PARK & PALOS TOWNSHIP) | IL 83 IL 64 TO I-290 (ELMHURST) | US 52 N/O JOLIET RD, S/O MANHATTAN RD, S/O MILLS RD (MANHATTAN & JOLIET) | IL 53 THEODORE ST TO RUBY ST (JOLIET) | IL 173 OAK GROVE RD TO KENNEDY ST (ALDEN TOWNSHIP & HEBRON TOWNSHIP) | IL 176 WAUCONDA RD TO IL 83 (WAUCONDA & MUNDELEIN) | US 41 IL 132 TO IL 173 (GURNEE & WADSWORTH) | VARIOUS LOCATIONS (TO USE AS NEEDED) |
| TREE REMOVAL (UNDER 6 UNITS DIAMETER) | UNIT | 596 | 270 | 326 | 326 | | | | | | | | | 270 |
| TREE REMOVAL (6 TO 15 UNITS DIAMETER) | UNIT | 5500 | 3500 | 2000 | 2000 | 44 | | 150 | | | | | 58 | 3248 |
| TREE REMOVAL (OVER 15 UNITS DIAMETER) | UNIT | 5965 | 4000 | 1965 | 1965 | 34 | | | | | | | 26 | 3940 |
| TREE REMOVAL (6 TO 15 UNITS DIAMETER) EXPEDITED | UNIT | 85 | 85 | 0 | | | | | | | | | | 85 |
| TREE REMOVAL (OVER 15 UNITS DIAMETER), EXPEDITED | UNIT | 500 | 500 | 0 | | | | | | | | | | 500 |
| TREE REMOVAL (SPECIAL) | UNIT | 169 | 5 | 164 | 164 | | | | | | | | | 5 |
| TREE REMOVAL, ACRES (SPECIAL) | ACRE | 14 | 8 | 6 | 6 | | 5.28 | 1.44 | 0.6 | | | | | 0.68 |
| TREE PRUNING (1 TO 10 INCH DIAMETER) | EACH | 90 | 15 | 75 | 75 | | | | | | | | | 15 |
| TREE PRUNING (OVER 10 INCH DIAMETER) | EACH | 175 | 90 | 85 | 85 | | | | | 50 | | | | 40 |
| TREE PRUNING (1 TO 10 INCH DIAMETER), EXPEDITED | EACH | 10 | 10 | 0 | | | | | | | | | | 10 |
| TREE PRUNING (OVER 10 INCH DIAMETER), EXPEDITED | EACH | 10 | 10 | 0 | | | | | | | | | | 10 |
| PRUNING FOR SAFETY AND EQUIPMENT CLEARANCE | UNIT | 126 | 75 | 51 | 51 | 22.5 | | | | 10 | 4.5 | | 30.5 | 7.5 |
| TREE LIMB REMOVAL (4 TO 10 INCHES DIAMETER) | EACH | 25 | 25 | 0 | | | | 4 | | | | | 4 | 17 |
| TREE LIMB REMOVAL (4 TO 10 INCHES DIAMETER), EXPEDITED | EACH | 10 | 10 | 0 | | | | | | | | | | 10 |
| TREE LIMB REMOVAL (OVER 10 INCHES DIAMETER) | EACH | 25 | 25 | 0 | | | | | | | | | | 25 |
| TREE LIMB REMOVAL (OVER 10 INCHES DIAMETER), EXPEDITED | EACH | 10 | 10 | 0 | | | | | | | | | | 10 |
| STUMP REMOVAL ONLY | UNIT | 321 | 125 | 196 | 196 | | | | | | | | | 125 |
| SELECTIVE CLEARING | UNIT | 84 | 48 | 36 | 36 | | | 10.6 | | | 3.26 | 11 | 13.4 | 9.74 |
| SELECTIVE CLEARING ACRES | ACRE | 68 | 0 | 68 | 68 | | | | | | | | | 0 |

NOTE: THE SPECIFIED QUANTITIES FOR EACH LOCATION ARE ESTIMATED. PAYMENT WILL BE MADE ONLY FOR ACTUAL QUANTITIES MEASURED AND ACCEPTED AS SATISFACTORY BY THE ENGINEER.

MODEL: C:\external\... FILE NAME: ...

| | | |
|--------------------------------|------------|-----------|
| USER NAME = melissa.delrosario | DESIGNED - | REVISED - |
| | DRAWN - | REVISED - |
| PLOT SCALE = 100.1151' / in. | CHECKED - | REVISED - |
| PLOT DATE = 7/13/2023 | DATE - | REVISED - |

**STATE OF ILLINOIS
DEPARTMENT OF TRANSPORTATION**

**DEAD TREE REMOVAL
LOCATION AND WORK SCHEDULE**

SCALE: SHEET OF SHEETS STA. TO STA.

| | | | | |
|---------------------------|-----------------------|---------|--------------|-----------|
| F.A. RTE. | SECTION | COUNTY | TOTAL SHEETS | SHEET NO. |
| VAR | 2023 VAR TREE REMOVAL | VARIOUS | 9 | 4 |
| CONTRACT NO. 62V19 | | | | |
| ILLINOIS FED. AID PROJECT | | | | |



CONTRACT
62V19

WORK
ORDER
NUMBER:

Field Work By:

Standard - 30 Day

PAGE: ____ of ____

Prepared By:

Completion Date

| | | |
|------|---------|------|
| Cook | DuPage | Kane |
| Lake | McHenry | Will |

Expedited - 48 hour

Team Section

Marked Route:

Municipality:

Side of Road:

Location:

| TREE # | LIMB REMOVAL | | TREE REMOVAL | | | | TREE PRUNING | |
|-------------|--------------------------------|----------------------------|--|------------------------------------|-----------------------------------|--|--------------------------------------|-----------------------------------|
| | 4" - 10" (X2010100) EACH | >10" (X2010200) EACH | Under 6" Diameter (X0100018) UNIT (DIA) | 6"-15" (20100110) UNIT (DIA) | > 15" (20100210) UNIT (DIA) | STUMP REMOVAL ONLY (X2010400) UNIT (DIA) | 1" - 10" (20101300) UNIT (DIA) | > 10" (20101350) UNIT (DIA) |
| SAMPLE | | | | | | | | |
| SHEET TOTAL | | | | | | | | |
| GRAND TOTAL | | | | | | | | |

Special Instructions:

Reason for Removal:

AUTHORIZATION OF WORK

IDOT Resident Engineer/Technician Signature

Date Work Order Issued Contractor Signature

CERTIFICATION OF COMPLETED WORK

Contractor Signature

Date Work Order Completed

OFFICE USE ONLY

INITIAL(S) DATE

Measured in place by:

Calculated by:

Checked by:

INSPECTION AND ACCEPTANCE OF COMPLETED WORK

Inspector Signature

Date Work Ordered Inspected and Accepted

This is to certify that the work has been completed.



Illinois Department
of Transportation

CONTRACT
62V19

WORK
ORDER
NUMBER:

Field Work By:

Standard - 30 Day

PAGE: ____ of ____

Prepared By:

Completion Date

| | | |
|------|---------|------|
| Cook | DuPage | Kane |
| Lake | McHenry | Will |

Team Section

Marked Route:

Municipality:

Side of Road:

Location:

| LOCATION | MEASUREMENTS | | | PRUNING FOR SAFETY & EQUIP. CLEAR. UNIT - (100 LF) | SELECTIVE CLEARING (Z0064800) UNIT - (1000 SF) | TREE REMOVAL SPECIAL (X2010310) UNIT - (1000 SF) | TREE REMOVAL, ACRES (SPECIAL) (X2010350) ACRE |
|-------------|--------------|--------|------------|---|---|--|--|
| | WIDTH | LENGTH | TOTAL AREA | | | | |
| SAMPLE | | | | | | | |
| SHEET TOTAL | | | | | | | |
| GRAND TOTAL | | | | | | | |

Special Instructions:

Reason for Removal:

AUTHORIZATION OF WORK

IDOT Resident Engineer/Technician Signature

Date Work Order Issued Contractor Signature

CERTIFICATION OF COMPLETED WORK

Contractor Signature

Date Work Order Completed

OFFICE USE ONLY

INITIAL(S) DATE

Measured in place by:

Calculated by:

Checked by:

INSPECTION AND ACCEPTANCE OF COMPLETED WORK

Inspector Signature

Date Work Ordered Inspected and Accepted

This is to certify that the work has been completed.

MODEL: Default
FILE NAME: \\s01\del-cow-beat\del-cow-beat\DOT\Documents\DOT_Offices\District_1\Projects\62V19\21\CO\DDM\Structures\0114921-shr-handset.dgn

USER NAME = melissa.delrosario
DESIGNED -
DRAWN -
PLOT SCALE = 100.1151' / in.
PLOT DATE = 7/13/2023

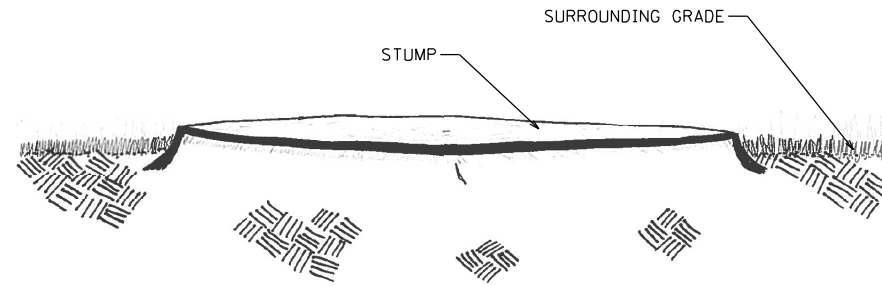
REVISOR -
REVISION -
CHECKED -
DATE -

STATE OF ILLINOIS
DEPARTMENT OF TRANSPORTATION

DEAD TREE REMOVAL
SAMPLE WORK ORDER

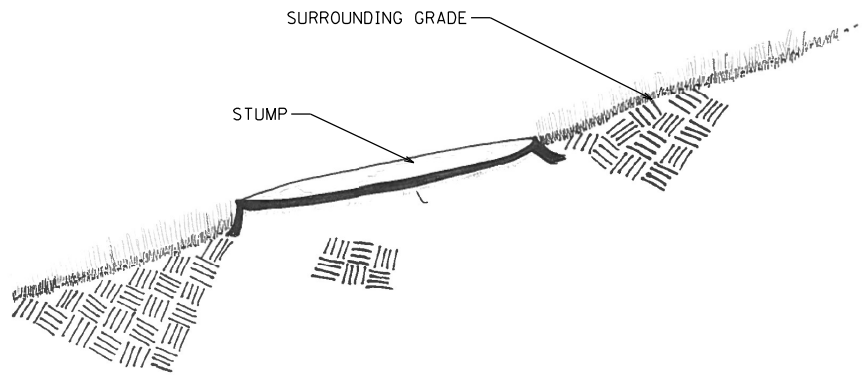
SCALE: SHEET OF SHEETS STA. TO STA.

| | | | | |
|---------------------------|-----------------------|---------|--------------|-----------|
| F.A. RTE. | SECTION | COUNTY | TOTAL SHEETS | SHEET NO. |
| VAR | 2023 VAR TREE REMOVAL | VARIOUS | 9 | 5 |
| CONTRACT NO. 62V19 | | | | |
| ILLINOIS FED. AID PROJECT | | | | |



STUMP CUT FLUSH AT A HORIZONTAL PLANE

NOTE: STUMPS SHALL BE CUT LESS THAN 2" OF THE SURROUNDING GRADE.



STUMP CUT FLUSH ON A SLOPE

NOTE: STUMPS SHALL BE CUT LESS THAN 2" OF THE SURROUNDING GRADE.

MODEL: Default
 FILE NAME: \\w:\illinois\sws\staff\m\melissa.delosario\DOT\Office\DOT\Documents\DOT\Office\DOT\Projects\14921\CADD\Bids\Structures\14921\stump.dwg

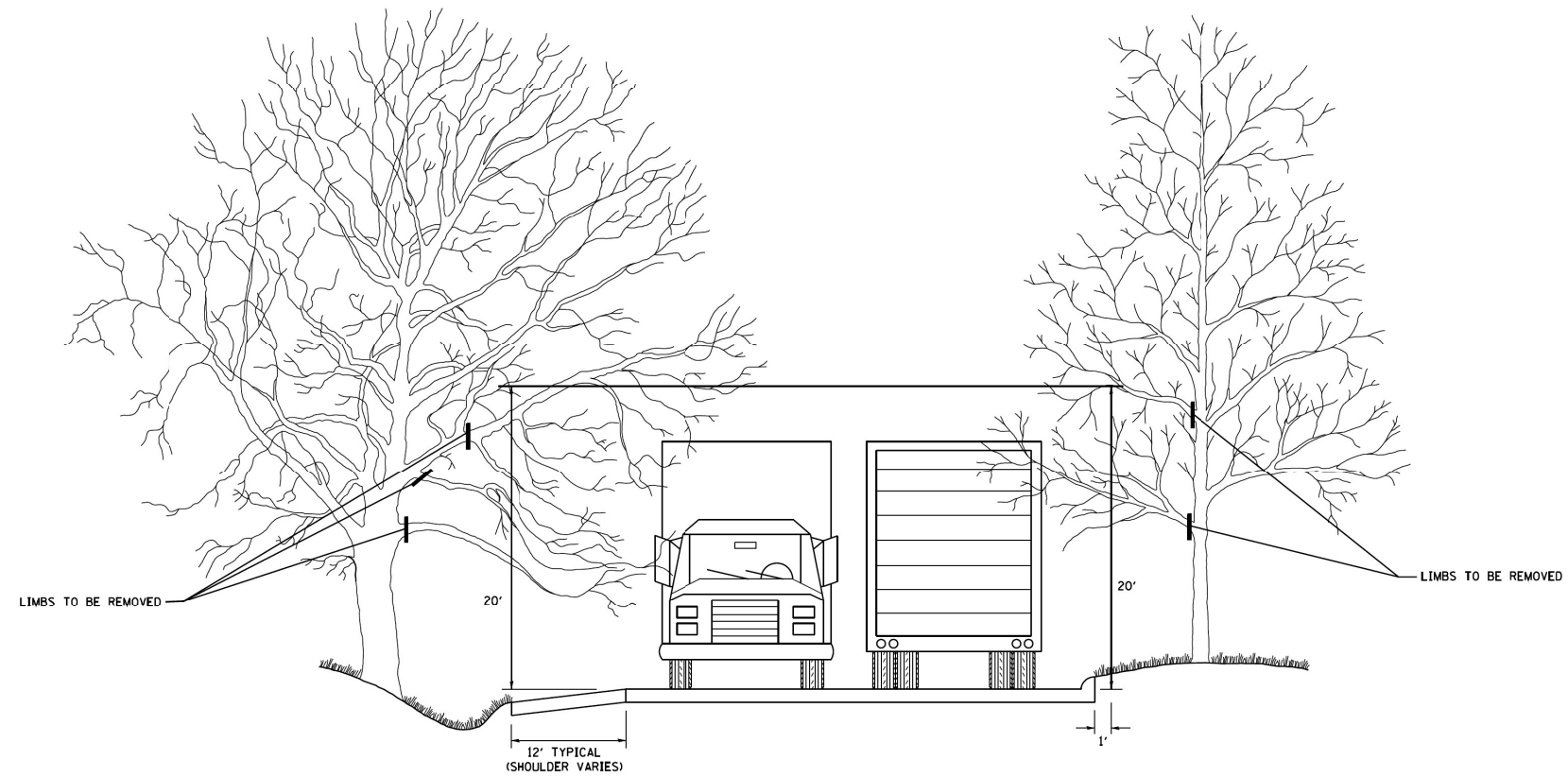
| | | |
|-------------------------------|------------|-----------|
| USER NAME = melissa.delosario | DESIGNED - | REVISED - |
| | DRAWN - | REVISED - |
| PLOT SCALE = 100.1164' / in. | CHECKED - | REVISED - |
| PLOT DATE = 7/13/2023 | DATE - | REVISED - |

**STATE OF ILLINOIS
DEPARTMENT OF TRANSPORTATION**

**DEAD TREE REMOVAL
STUMP DETAILS**

SCALE: SHEET OF SHEETS STA. TO STA.

| | | | | |
|---------------------------|-----------------------|---------|--------------|-----------|
| F.A. RTE. | SECTION | COUNTY | TOTAL SHEETS | SHEET NO. |
| VAR | 2023 VAR TREE REMOVAL | VARIOUS | 9 | 6 |
| CONTRACT NO. 62V19 | | | | |
| ILLINOIS FED. AID PROJECT | | | | |



NOTE: IF A DEAD AND/OR HAZARDOUS LIMB IS FOUND TO BE AT A HIGHER ELEVATION THAN THE PRUNING CLEARANCE REQUIREMENT. THE CONTRACTOR SHALL PRUNE THE LIMB AND THE COST OF WORK SHALL BE INCIDENTAL TO THE PAY ITEM.

MODEL: D:\info\...
 FILE NAME: p:\public\sw_bentley.com\PLM\DOT\Documents\DOT_offices\District: 1\Project\ID14921\ICDD\ata\Structures\ID14921_sht-landexp.dgn

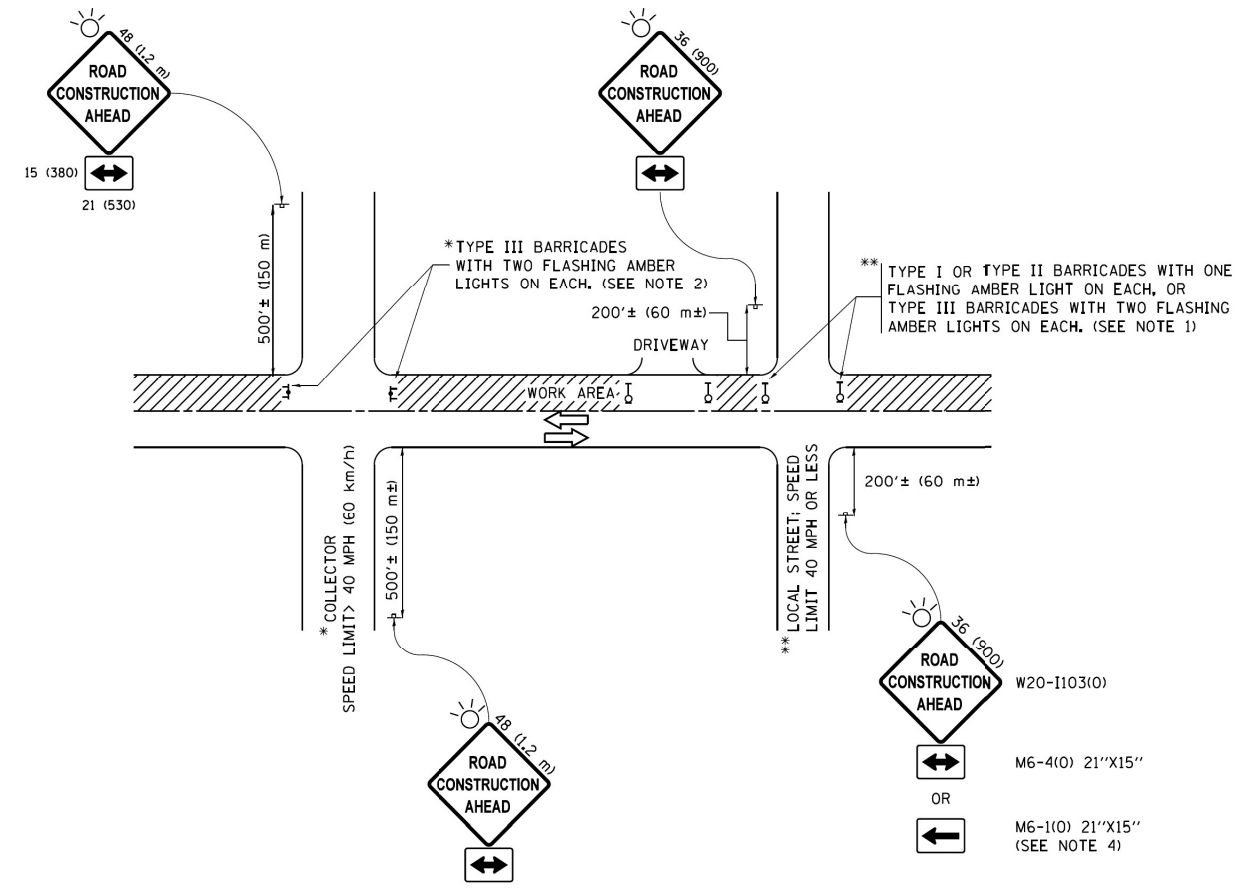
| | | |
|--------------------------------|------------|-----------|
| USER NAME = melissa.celrosario | DESIGNED - | REVISED - |
| | DRAWN - | REVISED - |
| PLOT SCALE = 100.0329' / in. | CHECKED - | REVISED - |
| PLOT DATE = 7/13/2023 | DATE - | REVISED - |

**STATE OF ILLINOIS
 DEPARTMENT OF TRANSPORTATION**

**DEAD TREE REMOVAL
 PRUNING FOR SAFETY & EQUIPMENT CLEARANCE**

SCALE: SHEET OF SHEETS STA. TO STA.

| F.A. RTE. | SECTION | COUNTY | TOTAL SHEETS | SHEET NO. |
|---------------------------|-----------------------|---------|--------------------|-----------|
| VAR | 2023 VAR TREE REMOVAL | VARIOUS | 9 | 7 |
| | | | CONTRACT NO. 62V19 | |
| ILLINOIS FED. AID PROJECT | | | | |



NOTES:

1. SIDE ROAD WITH A SPEED LIMIT OF 40 MPH (60 km/h) OR LESS AS SHOWN ON THE DRAWING AND AS DIRECTED BY THE ENGINEER:
 - a) ONE "ROAD CONSTRUCTION AHEAD" SIGN 36 x 36 (900x900) WITH A FLASHER MOUNTED ON IT APPROXIMATELY 200' (60 m) IN ADVANCE OF THE MAIN ROUTE.
 - b) THE CLOSED PORTION OF THE MAIN ROUTE SHALL BE PROTECTED BY BLOCKING WITH TYPE I, TYPE II OR TYPE III BARRICADES, 1/3 OF THE CROSS SECTION OF THE CLOSED PORTION.
2. SIDE ROAD WITH A SPEED LIMIT GREATER THAN 40 MPH (60 km/h) AS SHOWN ON THE DRAWING AND AS DIRECTED BY THE ENGINEER:
 - a) ONE "ROAD CONSTRUCTION AHEAD" SIGN 48 x 48 (1.2 m x 1.2 m) WITH A FLASHER MOUNTED ON IT APPROXIMATELY 500' (150 m) IN ADVANCE OF THE MAIN ROUTE.
 - b) THE CLOSED PORTION OF THE MAIN ROUTE SHALL BE PROTECTED BY BLOCKING WITH TYPE III BARRICADES, 1/2 OF THE CROSS SECTION OF THE CLOSED PORTION.
3. CONES MAY BE SUBSTITUTED FOR BARRICADES OR DRUMS AT HALF THE SPACING DURING DAY OPERATIONS. CONES SHALL BE A MINIMUM OF 28 (710) IN HEIGHT.
4. WHEN THE SIDE ROAD LIES BETWEEN THE BEGINNING OF THE MAINLINE SIGNING AND THE WORK ZONE, A SINGLE HEADED ARROW (M6-1) SHALL BE USED IN LIEU OF THE DOUBLE HEADED ARROW (M6-4).
5. WHEN WORK IS BEING PERFORMED ON A SIDE ROAD OR DRIVEWAY, FOLLOW THE APPLICABLE STANDARD(S). THE DIRECTIONAL ARROW (M6-1 OR M6-4) SHALL BE COVERED OR REMOVED WHEN NO LONGER CONSISTENT WITH THE TRAFFIC CONTROL SET-UP.
6. ADVANCE WARNING SIGNS ARE TO BE OMITTED ON DRIVEWAYS UNLESS OTHERWISE SPECIFIED IN THE PLANS OR BY THE ENGINEER.
7. THE TRAFFIC CONTROL AND PROTECTION FOR SIDE ROADS, INTERSECTIONS, AND DRIVEWAYS SHALL BE INCLUDED IN THE COST OF SPECIFIED TRAFFIC CONTROL STANDARDS OR ITEMS.

All dimensions are in inches (millimeters) unless otherwise shown.

MODEL: Default
 FILE NAME: \\hillsdale-pw-banlley.com\hillsdale\DOT\Documents\DOT\Office\Drawings\1\Projects\SD11492\1\CD\Drawings\Structures\DI14921-elt-hands.rdg

| | | |
|--------------------------------|------------|-----------|
| USER NAME = melissa.deirosario | DESIGNED - | REVISED - |
| PLOT SCALE = 100,0546' / in. | DRAWN - | REVISED - |
| PLOT DATE = 7/13/2023 | CHECKED - | REVISED - |
| | DATE - | REVISED - |

**STATE OF ILLINOIS
DEPARTMENT OF TRANSPORTATION**

**TRAFFIC CONTROL AND PROTECTION FOR SIDE
ROADS, INTERSECTIONS, & DRIVEWAYS (TC-10)**

SCALE: SHEET OF SHEETS STA. TO STA.

| | | | | |
|---------------------------|-----------------------|---------|--------------------|-----------|
| F.A. RTE. | SECTION | COUNTY | TOTAL SHEETS | SHEET NO. |
| VAR | 2023 VAR TREE REMOVAL | VARIOUS | 9 | 8 |
| | | | CONTRACT NO. 62V19 | |
| ILLINOIS FED. AID PROJECT | | | | |

