

09-22-2023 LETTING ITEM 066

STATE OF ILLINOIS

DEPARTMENT OF TRANSPORTATION

PLANS FOR PROPOSED STP BRIDGE PROGRAM

T.R. 107 (1400N) OVER WILBORN CREEK

PROJECT R959(857)

SECTION 04-06129-00-BR

MOULTRIE COUNTY

MARROWBONE ROAD DISTRICT

C-97-068-22

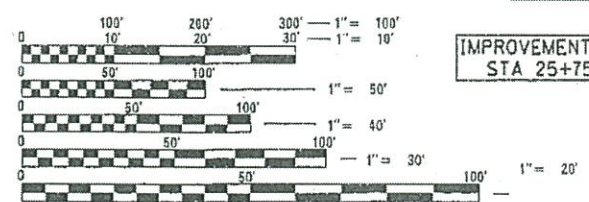
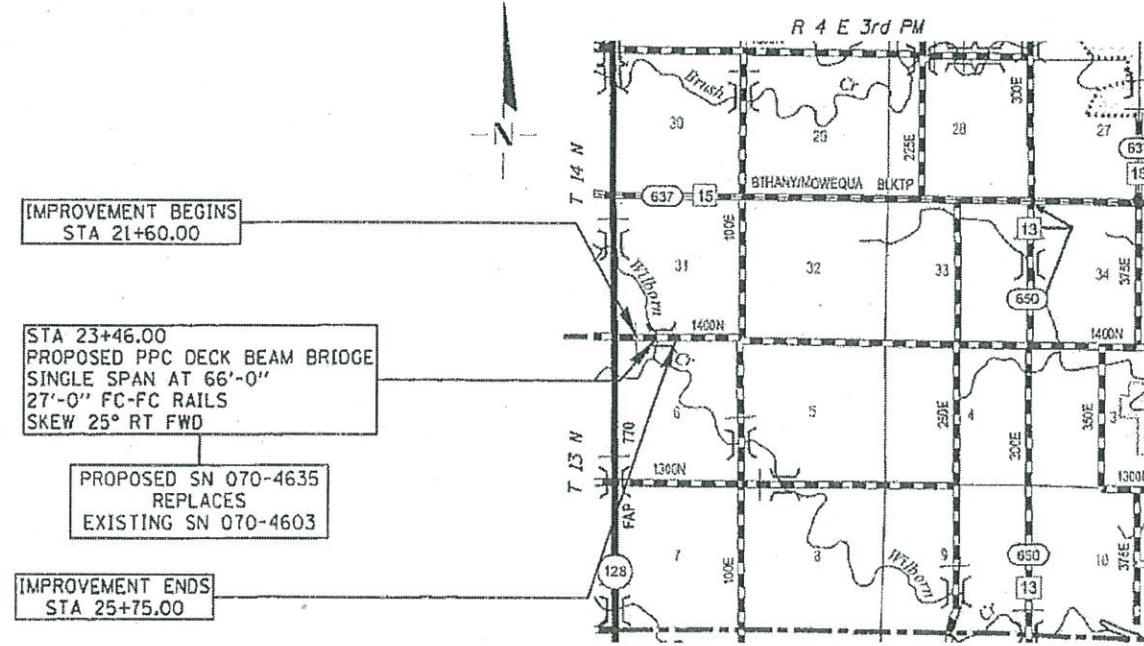
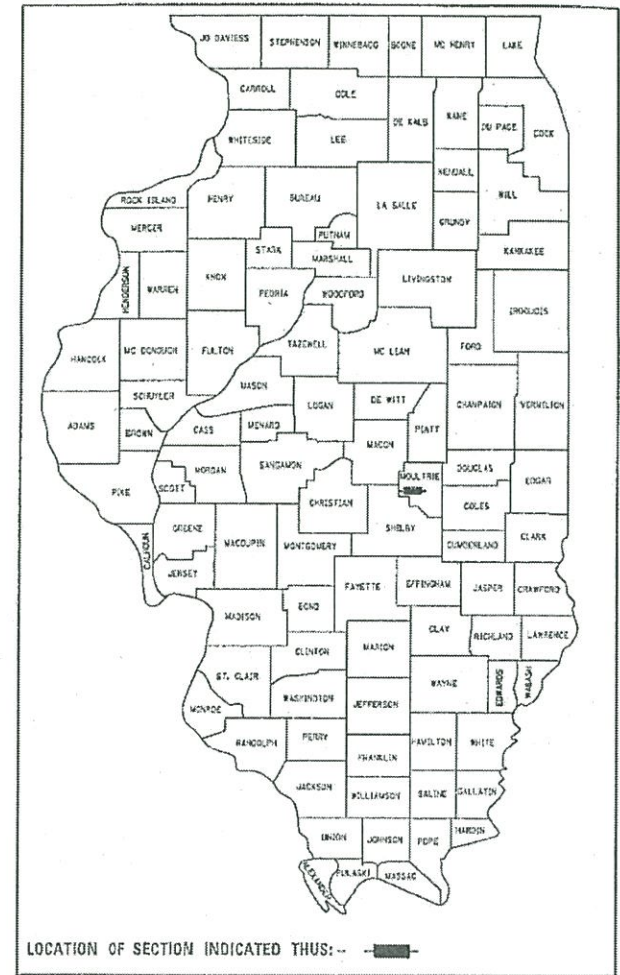
T.R.	SECTION	COUNTY	TOTAL SHEETS	SHEET NO.
107	04-06129-00-BR	MOULTRIE	21	1
FEDERAL AID PROJECT		ILLINOIS	CONTRACT NO. 95942	

SEE SHEET 2 FOR INDEX OF SHEETS AND LIST OF ILLINOIS DOT HIGHWAY STANDARDS

UTILITY CONTACTS:

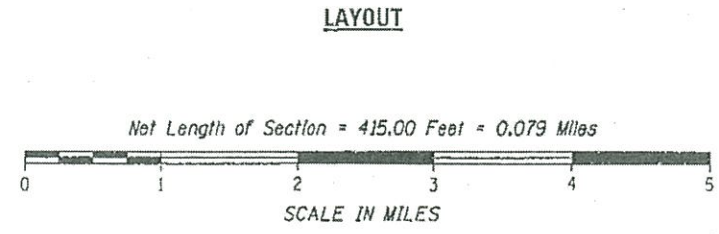
UTILITY TYPE:

NONE REPORTED



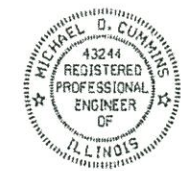
FULL SIZE PLANS HAVE BEEN PREPARED USING STANDARD ENGINEERING SCALES. REDUCED SIZED PLANS WILL NOT CONFORM TO STANDARD SCALES. IN MAKING MEASUREMENTS ON REDUCED PLANS, THE ABOVE SCALES MAY BE USED.

J.U.L.I.E. JOINT UTILITY LOCATION INFORMATION FOR EXCAVATION 1-800-892-0123 OR 811



Net Length of Section = 415.00 Feet = 0.079 Miles

FUNCTIONAL CLASSIFICATION : LOCAL ROAD DESIGN SPEED 30 MPH CURRENT ADT= 50 (2015)



Michael D. Cummins 6/28/23 ILLINOIS PROFESSIONAL NO. 43244 (Expires 11/30/23)

APPROVED June 29, 2023  
Kel Stuber  
 MOULTRIE COUNTY ENGINEER

PASSED June 29, 2023  
Orville Marten  
 ROAD DISTRICT COMMISSIONER

PASSED July 20, 2023  
Becky Williams  
 DISTRICT SEVEN ENGINEER OF LOCAL ROADS AND STREETS

RELEASED FOR BID BASED ON LIMITED REVIEW July 20, 2023  
Jeff M...  
 REGION FOUR ENGINEER

STATE OF ILLINOIS DEPARTMENT OF TRANSPORTATION

PRINTED BY THE AUTHORITY OF THE STATE OF ILLINOIS

**INDEX OF SHEETS**

SHEET NO.	TITLE
1	COVER SHEET
2	INDEX OF SHEETS, HIGHWAY STANDARDS, GENERAL NOTES AND ENTRANCE DETAILS
3-4	SUMMARY OF QUANTITIES
5	TYPICAL SECTIONS
6	SCHEDULE OF QUANTITIES
7	ALIGNMENT, BENCHMARKS, AND CROSS TIES
8	PLAN AND PROFILE
9	CONCRETE COLLAR DETAIL
10-17	BRIDGE PLANS
18-21	CROSS SECTIONS

**GENERAL NOTES**

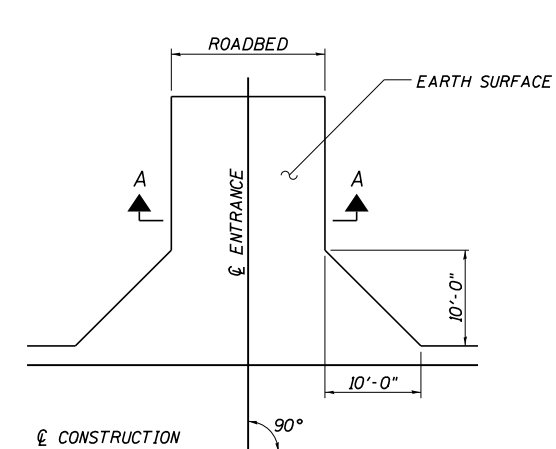
- WHERE SECTION OR SUBSECTION MONUMENTS ARE ENCOUNTERED, THE ENGINEER SHALL BE NOTIFIED BEFORE ANY SUCH MONUMENTS ARE REMOVED. THE CONTRACTOR SHALL PROTECT AND CAREFULLY PRESERVE ALL PROPERTY MARKERS AND MONUMENTS UNTIL THE OWNER, AN AUTHORIZED SURVEYOR, OR AGENT HAS WITNESSED OR OTHERWISE REFERENCED THEIR LOCATION.
- THE AREA TO BE SEEDED SHALL CONSIST OF ALL DISTURBED EARTH SURFACES WITHIN THE RIGHT OF WAY AS DIRECTED BY THE ENGINEER.  
  
SEEDING CLASS 2 (SPECIAL) = 0.50 ACRES
- ALL ELEVATIONS SHOWN ON THE PLANS ARE BASED ON NORTH AMERICAN VERTICAL DATUM OF 1988 (NAVD88).
- THE LOCATIONS OF EXISTING UTILITIES AS SHOWN ON THE PLANS ARE BASED ON CAREFUL FIELD INVESTIGATION AND THE BEST INFORMATION AVAILABLE, BUT ARE NOT GUARANTEED. IT SHALL BE THE CONTRACTOR'S RESPONSIBILITY TO ASCERTAIN THEIR EXACT LOCATION FROM THE UTILITY COMPANIES, MUNICIPALITIES, AND FIELD INSPECTION. SEE STANDARD SPECIFICATIONS.
- THE CONTRACTOR SHALL BE RESPONSIBLE FOR REPAIRS TO ANY UTILITY LINES AND EXISTING IMPROVEMENTS TO REMAIN THAT ARE DAMAGED AS A RESULT OF THE WORK.
- LAYOUT OF EROSION CONTROL ITEMS MAY BE VARIED IN THE FIELD TO SUIT GROUND CONDITIONS AS DIRECTED BY THE ENGINEER.

**APPLICATION RATES USED IN QUANTITY CALCULATIONS**

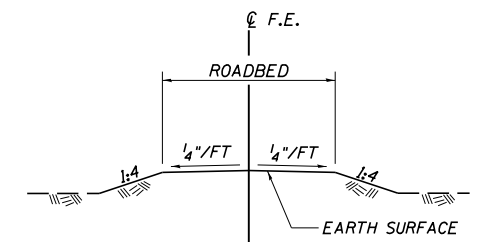
GRANULAR MATERIALS	2.05 TON/SCU YD
RIPRAP	1.5 TON/SCU YD
TEMPORARY EROSION CONTROL SEEDING	.100 LB/ACRE
BITUMINOUS MATERIALS (PRIME COAT)	0.35 GAL /SQ YD
BITUMINOUS MATERIALS (COVER AND SEAL COAT)	0.35 GAL /SQ YD
COVER COAT AGGREGATE	.25 LB /SQ YD
SEAL COAT AGGREGATE	.25 LB /SQ YD

**LIST OF ILLINOIS DOT HIGHWAY STANDARDS**

000001-08	STANDARD SYMBOLS, ABBREVIATIONS AND PATTERNS
001001-02	AREAS OF REINFORCEMENT BARS
001006	DECIMAL OF AN INCH AND OF A FOOT
280001-07	TEMPORARY EROSION CONTROL SYSTEMS
515001-04	NAME PLATE FOR BRIDGES
666001-01	RIGHT OF WAY MARKERS
701901-08	TRAFFIC CONTROL DEVICES
BLR 21-9	TYPICAL APPLICATION OF TRAFFIC CONTROL DEVICES FOR CONSTRUCTION ON RURAL LOCAL HIGHWAYS



**FIELD ENTRANCE DETAIL**



**SECTION A-A**  
EARTH FE

ENTRANCES TO BE CONSTRUCTED  
LT STA 24+50.00 24' ROADBED  
RT STA 24+75.00 24' ROADBED

MODEL: \$MODELNAME\$  
FILE NAME: \$FILES\$



JOB = 2648	DESIGNED - CGF	REVISED -
FILE NAME = \$FILES\$	DRAWN - CGF	REVISED -
PLOT SCALE = \$SCALE\$	CHECKED - AAN	REVISED -
PLOT DATE = \$DATE\$	DATE - 4/06/2022	REVISED -

**MOULTRIE COUNTY  
TR 107 IMPROVEMENTS**

**INDEX OF SHEETS, HIGHWAY STANDARDS,  
GENERAL NOTES, AND ENTRANCE DETAILS**

SCALE: SHEET OF SHEETS STA. TO STA.

T.R.	SECTION	COUNTY	TOTAL SHEETS	SHEET NO.
107	04-06129-00-BR	MOULTRIE	21	2
ILLINOIS			FED. AID PROJECT	
CONTRACT NO. 95942				

SUMMARY OF QUANTITIES

CODE NO.	ITEM	UNIT	TOTAL QUANTITY
* 20100110	TREE REMOVAL (6 TO 15 UNITS DIAMETER)	UNITS	81
* 20100210	TREE REMOVAL (OVER 15 UNITS DIAMETER)	UNITS	166
20200100	EARTH EXCAVATION	CU YD	445
20300100	CHANNEL EXCAVATION	CU YD	46
21301052	EXPLORATION TRENCH, 52" DEPTH	FOOT	24
28000250	TEMPORARY EROSION CONTROL SEEDING	POUND	45
28000400	PERIMETER EROSION BARRIER	FOOT	235
28000500	INLET AND PIPE PROTECTION	EACH	4
28100207	STONE RIPRAP, CLASS A4	TON	280
28200200	FILTER FABRIC	SQ YD	380
40200800	AGGREGATE SURFACE COURSE, TYPE B	TON	398
50100100	REMOVAL OF EXISTING STRUCTURES	EACH	1
50105220	PIPE CULVERT REMOVAL	FOOT	255
50200100	STRUCTURE EXCAVATION	CU YD	41

SUMMARY OF QUANTITIES

CODE NO.	ITEM	UNIT	TOTAL QUANTITY
50300225	CONCRETE STRUCTURES	CU YD	28.4
50400505	PRECAST PRESTRESSED CONCRETE DECK BEAMS (27" DEPTH)	SQ FT	1,782
50800205	REINFORCEMENT BARS, EPOXY COATED	POUND	3,930
* 50900205	STEEL RAILING, TYPE S1	FOOT	132
51200957	FURNISHING METAL SHELL PILES 12"X0.250"	FOOT	240
51202305	DRIVING PILES	FOOT	240
51203200	TEST PILE METAL SHELLS	EACH	2
51500100	NAME PLATES	EACH	1
54248510	CONCRETE COLLAR	CU YD	0.3
542D0223	PIPE CULVERTS, CLASS D, TYPE 1 18"	FOOT	92
550B0330	STORM SEWERS, CLASS B, TYPE 2 10"	FOOT	182
59300100	CONTROLLED LOW-STRENGTH MATERIAL	CU YD	21.5
60100965	PIPE DRAINS 18"	FOOT	60
66600105	FURNISHING AND ERECTING RIGHT OF WAY MARKERS	EACH	8

\* SPECIALTY ITEMS

MODEL: 140DELENAME  
FILE NAME: 31113



JOB = 2648  
FILE NAME = \$FILES\$  
PLOT SCALE = \$SCALES\$  
PLOT DATE = \$DATES\$

DESIGNED - CGF  
DRAWN - CGF  
CHECKED - MDC  
DATE - 6/07/2023

REVISED -  
REVISED -  
REVISED -  
REVISED -

MOULTRIE COUNTY  
TR 107 IMPROVEMENTS

SUMMARY OF QUANTITIES

SCALE: SHEET OF SHEETS STA. TO STA.

T.R.	SECTION	COUNTY	TOTAL SHEETS	SHEET NO.
107	04-06129-00-BR	MOULTRIE	21	3
ILLINOIS			FED. AID PROJECT	

CONTRACT NO. 95942





20100110 TREE REMOVAL (6 TO 15 UNITS DIAMETER)	
LOCATION	UNIT
LT STA 23+46.1	15
LT STA 23+61.9	12
LT STA 23+62.2	15
RT STA 23+97.9	15
RT STA 23+98.6	12
RT STA 24+21.5	12
<b>TOTAL</b>	<b>81</b>

20100210 TREE REMOVAL (OVER 15 UNITS DIAMETER)	
LOCATION	UNIT
LT STA 22+96.7	40
LT STA 23+05.8	30
LT STA 23+48.5	18
RT STA 23+76.7	18
RT STA 23+80.2	18
RT STA 23+88.9	42
<b>TOTAL</b>	<b>166</b>

**EARTHWORK**

LOCATION	20200100 EARTH EXCAVATION	EXCAVATION ADJUSTED FOR SHRINKAGE	EMBANKMENT	EARTHWORK BALANCE WASTE (+) OR SHORTAGE (-)
	CU YD	CU YD	CU YD	CU YD
STA 21+60.00 TO STA 23+12.13	110	85	125	-40
STA 23+79.88 TO STA 25+75.00	335	255	140	115
<b>TOTAL</b>	<b>445</b>	<b>340</b>	<b>265</b>	<b>75</b>

SHRINKAGE = 25%

21301052 EXPLORATION TRENCH, 52" DEPTH	
LOCATION	FOOT
12.0' RT STA 24+50.0 TO 24.0' RT STA 24+50.0	12
12.0' RT STA 25+73.3 TO 24.0' RT STA 25+73.3	12
<b>TOTAL</b>	<b>24</b>

28000250 TEMPORARY EROSION CONTROL SEEDING	
LOCATION	POUND
LT STA 21+60.00 TO STA 23+27.00	9
LT STA 23+75.00 TO STA 23+40.00	14
RT STA 21+60.00 TO STA 23+52.00	10
RT STA 23+74.00 TO STA 25+75.00	12
<b>TOTAL</b>	<b>45</b>

28000400 PERIMETER EROSION BARRIER	
LOCATION	FOOT
LT STA 22+74.10 TO STA 22+99.10	25
LT STA 23+40.30 TO STA 24+50.30	110
RT STA 23+00.00 TO STA 23+50.00	50
RT STA 23+82.20 TO STA 24+32.20	50
<b>TOTAL</b>	<b>235</b>

28000500 INLET AND PIPE PROTECTION	
LOCATION	EACH
LT STA 24+72.8	1
RT STA 23+00.0	1
RT STA 24+04.0	1
RT STA 24+98.0	1
<b>TOTAL</b>	<b>4</b>

40200800 AGGREGATE SURFACE COURSE, TYPE B		
LOCATION		TON
STA 21+60.00 TO STA 22+10.00		48.51
STA 22+10.00 TO STA 22+12.13		2.37
STA 22+12.13 TO STA 23+12.13		123.72
STA 23+79.88 TO STA 24+79.88		124.03
STA 24+79.88 TO STA 25+25.00		50.25
STA 25+25.00 TO STA 25+75.00		48.74
<b>TOTAL</b>		<b>397.61</b>
<b>USE</b>		<b>398</b>

542D0223 PIPE CULVERTS, CLASS D, TYPE 1 18"		
LOCATION		FOOT
LT STA 24+27.0 TO STA 24+73.0		46
RT STA 24+52.0 TO STA 24+98.0		46
<b>TOTAL</b>		<b>92</b>

60100965 PIPE DRAINS 18"		
LOCATION		FOOT
RT STA 23+00.0 TO STA 23+30.0		30
RT STA 23+70.0 TO STA 24+00.0		30
<b>TOTAL</b>		<b>60</b>

54248510 CONCRETE COLLAR	
LOCATION	CU YD
RT STA 25+73.3	0.22
<b>TOTAL</b>	<b>0.22</b>
<b>USE</b>	<b>0.3</b>

550B0330 STORM SEWERS, CLASS B, TYPE 2 10"	
LOCATION	FOOT
RT STA 23+91.3 TO STA 25+73.3	182
<b>TOTAL</b>	<b>182</b>

**BITUMINOUS SURFACE TREATMENT A2**

LOCATION	LR403200	LR403400	LR403500	LR403600
	BITUMINOUS MATERIALS (PRIME COAT)	BITUMINOUS MATERIALS (COVER AND SEAL COATS)	COVER COAT AGGREGATE	SEAL COAT AGGREGATE
	TON	TON	TON	TON
<b>APPLICATION RATES</b>	0.35 GAL/SQ YD	0.35 GAL/SQ YD	25 LB/SQ YD	25 LB/SQ YD
STA 21+60.00 TO STA 22+10.00	0.12	0.12	1.05	1.05
STA 22+10.00 TO STA 22+12.13	0.01	0.01	0.05	0.05
STA 22+12.13 TO STA 23+12.13	0.32	0.32	2.84	2.84
STA 23+79.88 TO STA 24+79.88	0.32	0.32	2.85	2.85
STA 24+79.88 TO STA 25+25.00	0.13	0.13	1.13	1.13
STA 25+25.00 TO STA 25+75.00	0.12	0.12	1.06	1.06
<b>TOTAL</b>	<b>1.02</b>	<b>1.02</b>	<b>8.98</b>	<b>8.98</b>
<b>ROUNDED TOTAL</b>	<b>2</b>	<b>2</b>	<b>9</b>	<b>9</b>

66600105 FURNISHING AND ERECTING RIGHT OF WAY MARKERS		
LOCATION	OFFSET	EACH
	FOOT	
LT STA 21+60.00	23.55	1
LT STA 22+50.00	40.00	1
LT STA 25+00.00	40.00	1
LT STA 25+75.00	23.93	1
RT STA 21+60.00	23.72	1
RT STA 23+00.00	40.00	1
RT STA 25+00.00	40.00	1
RT STA 25+75.00	24.04	1
<b>TOTAL</b>		<b>8</b>

50105220 PIPE CULVERT REMOVAL		
LOCATION	TYPE	FOOT
LT STA 22+96.3 TO STA 23+19.6	18" CMP	24
RT STA 23+18.6 TO STA 23+42.5	15" CMP	24
RT STA 23+66.3 TO STA 23+91.3	15" CMP	25
RT STA 23+91.3 TO STA 25+73.3	8" CLAY	182
<b>TOTAL</b>		<b>255</b>

X2501000 SEEDING, CLASS 2 (SPECIAL)	
LOCATION	ACRE
LT STA 21+60.00 TO STA 23+27.00	0.09
LT STA 23+75.00 TO STA 23+40.00	0.14
RT STA 21+60.00 TO STA 23+52.00	0.10
RT STA 23+74.00 TO STA 25+75.00	0.12
<b>TOTAL</b>	<b>0.45</b>
<b>ROUNDED TOTAL</b>	<b>0.50</b>

MODEL: \\MODEL\NAMES  
FILE: \\MODEL\FILES



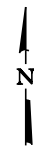
JOB = 2648	DESIGNED - CGF	REVISED -
FILE NAME = \$FILES\$	DRAWN - CGF	REVISED -
PLOT SCALE = \$SCALES\$	CHECKED - MDC	REVISED -
PLOT DATE = \$DATES\$	DATE - 6/07/2023	REVISED -

**MOULTRIE COUNTY  
TR 107 IMPROVEMENTS**

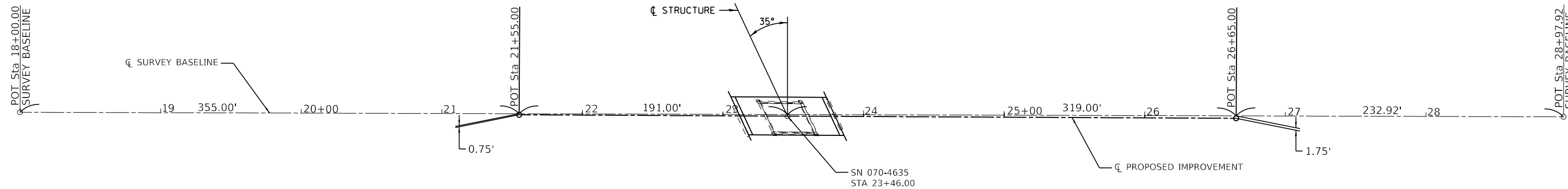
**SCHEDULE OF QUANTITIES**

SCALE: SHEET OF SHEETS STA. TO STA.

T.R.	SECTION	COUNTY	TOTAL SHEETS	SHEET NO.
107	04-06129-00-BR	MOULTRIE	21	6
CONTRACT NO. 95942				
ILLINOIS FED. AID PROJECT				



SEC 31, T14N, R4E, 3RD PM



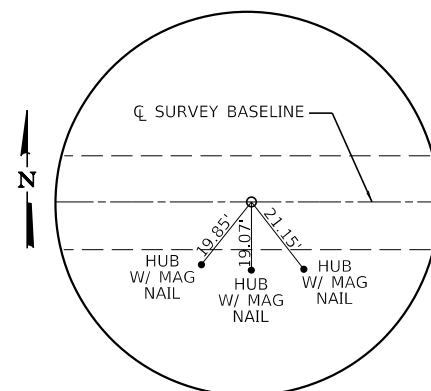
SEC 6, T13N, R4E, 3RD PM

BM#1 - SPIKE NAIL IN TREE  
STA. 22+98, 33' LT  
ELEV. 655.89

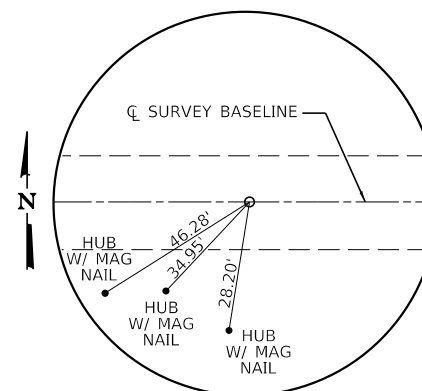
BM#2 - CUT "C" ON HUB GUARD  
STA. 23+56, 8' LT  
ELEV. 659.38

BM#3 - MAG IN HEDGE FENCE POST  
STA. 26+40, 25' RT  
ELEV. 665.98

CL PROPOSED IMPROVEMENT			
CONTROL POINT	STATION	COORDINATES	
		NORTHING	EASTING
P.O.T.	21+55.00	1071956.91	851598.04
P.O.T.	26+65.00	1071954.39	852108.04



SURVEY BASELINE  
P.O.T. STA 18+00.00  
IRON PIN (SET)  
N 1071958.71  
E 851243.05



SURVEY BASELINE  
P.O.T. STA 28+97.92  
IRON PIN (SET)  
N 1071955.45  
E 852340.96

MODEL: \\MODEL\BENMARKS  
FILE NAME: STILES

**CEC** Cummins  
Engineering  
Corporation  
ENGINEERS & SURVEYORS

JOB = 2648  
FILE NAME = \$FILES\$  
PLOT SCALE = \$SCALE\$  
PLOT DATE = \$DATE\$

DESIGNED , CGF  
DRAWN , CGF  
CHECKED , MER  
DATE , 4/08/2022

REVISED ,  
REVISED ,  
REVISED ,  
REVISED ,

**MOULTRIE COUNTY  
TR 107 IMPROVEMENTS**

**ALIGNMENT, BENCHMARKS, AND CROSS TIES**

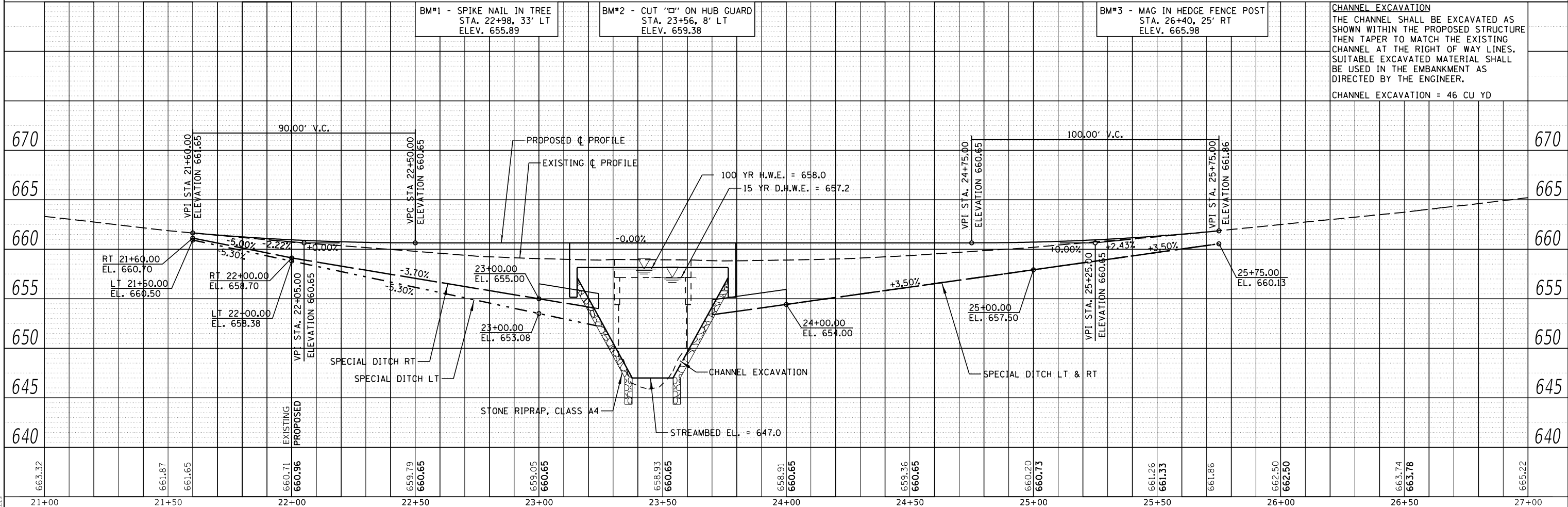
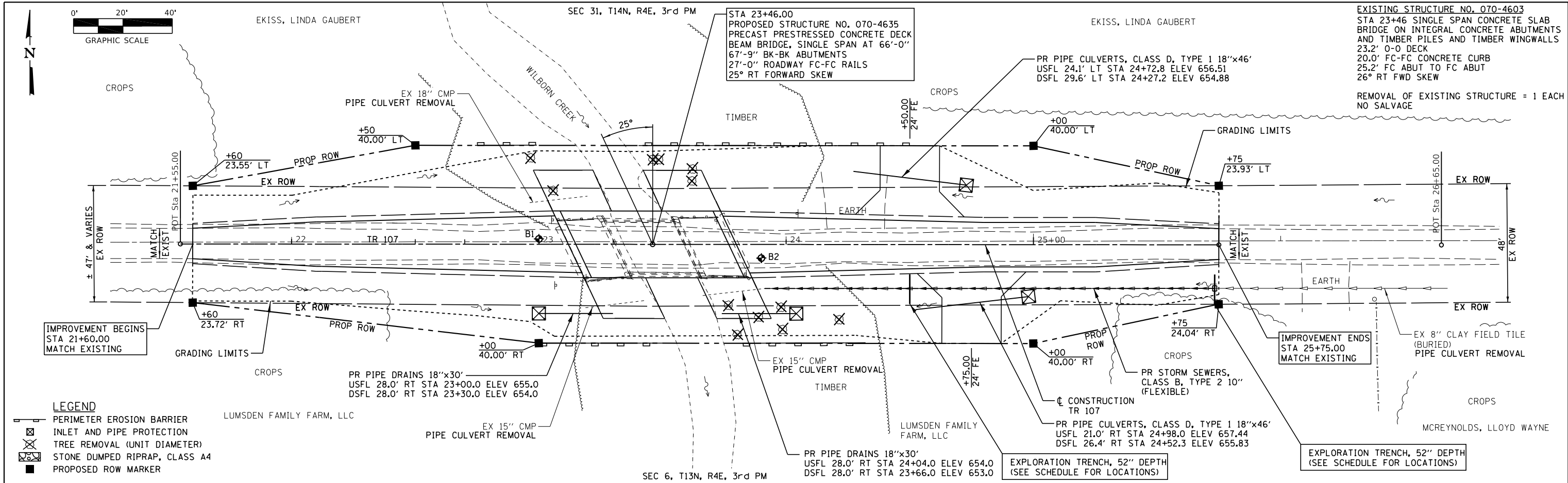
SCALE: SHEET OF SHEETS STA. TO STA.

T.R.	SECTION	COUNTY	TOTAL SHEETS	SHEET NO.
107	04-06129-00-BR	MOULTRIE	21	7
CONTRACT NO. 95942				
ILLINOIS FED. AID PROJECT				

DATE	
BY	
PLAN	SURVEYED
	PLOTTED
	ALIGNMENT CHECKED
	NOTE BOOK
	NO.
	FILE NAME
	NO.

DATE	
BY	
PROFILE	SURVEYED
	PLOTTED
	GRADES CHECKED
	NOTE BOOK
	NO.
	FILE NAME
	NO.

MODEL: SPOKELNAMES  
FILE NAME: SFILES



663.32	661.87	661.65	660.71	660.96	659.79	659.05	658.93	658.91	659.36	660.20	661.26	661.33	661.86	662.50	663.74	663.78	665.22
21+00	21+50	22+00	22+50	23+00	23+50	24+00	24+50	25+00	25+50	26+00	26+50	27+00					

**CEC** Cummins  
Engineering  
Corporation  
ENGINEERS & SURVEYORS

JOB = 2948	DESIGNED - CGF	REVISED -
FILE NAME = SFILES	DRAWN - CGF	REVISED -
PLOT SCALE = \$SCALE\$	CHECKED - TSH	REVISED -
PLOT DATE = \$DATES	DATE - 2/05/2021	REVISED -

MOULTRIE COUNTY	TR 107 IMPROVEMENTS
-----------------	---------------------

SCALE: 1" = 40'	SHEET	OF	SHEETS	STA. 21+50.00	TO STA. 26+65.00
-----------------	-------	----	--------	---------------	------------------

T.R.	SECTION	COUNTY	TOTAL SHEETS	SHEET NO.
107	04-06129-00-BR	MOULTRIE	21	8
CONTRACT NO. 95942				

ILLINOIS	FED. AID PROJECT
----------	------------------

**CHANNEL EXCAVATION**  
THE CHANNEL SHALL BE EXCAVATED AS SHOWN WITHIN THE PROPOSED STRUCTURE THEN TAPER TO MATCH THE EXISTING CHANNEL AT THE RIGHT OF WAY LINES. SUITABLE EXCAVATED MATERIAL SHALL BE USED IN THE EMBANKMENT AS DIRECTED BY THE ENGINEER.  
CHANNEL EXCAVATION = 46 CU YD

**EXISTING STRUCTURE NO. 070-4603**  
STA 23+46 SINGLE SPAN CONCRETE SLAB BRIDGE ON INTEGRAL CONCRETE ABUTMENTS AND TIMBER PILES AND TIMBER WINGWALLS  
23.2' 0-0 DECK  
20.0' FC-FC CONCRETE CURB  
25.2' FC ABUT TO FC ABUT  
26° RT FWD SKEW  
REMOVAL OF EXISTING STRUCTURE = 1 EACH  
NO SALVAGE

**STA 23+46.00**  
PROPOSED STRUCTURE NO. 070-4635  
PRECAST PRESTRESSED CONCRETE DECK BEAM BRIDGE, SINGLE SPAN AT 66'-0"  
67'-9" BK-BK ABUTMENTS  
27'-0" ROADWAY FC-FC RAILS  
25° RT FORWARD SKEW

PR PIPE CULVERTS, CLASS D, TYPE 1 18"x46'  
USFL 24.1' LT STA 24+72.8 ELEV 656.51  
DSFL 29.6' LT STA 24+27.2 ELEV 654.88

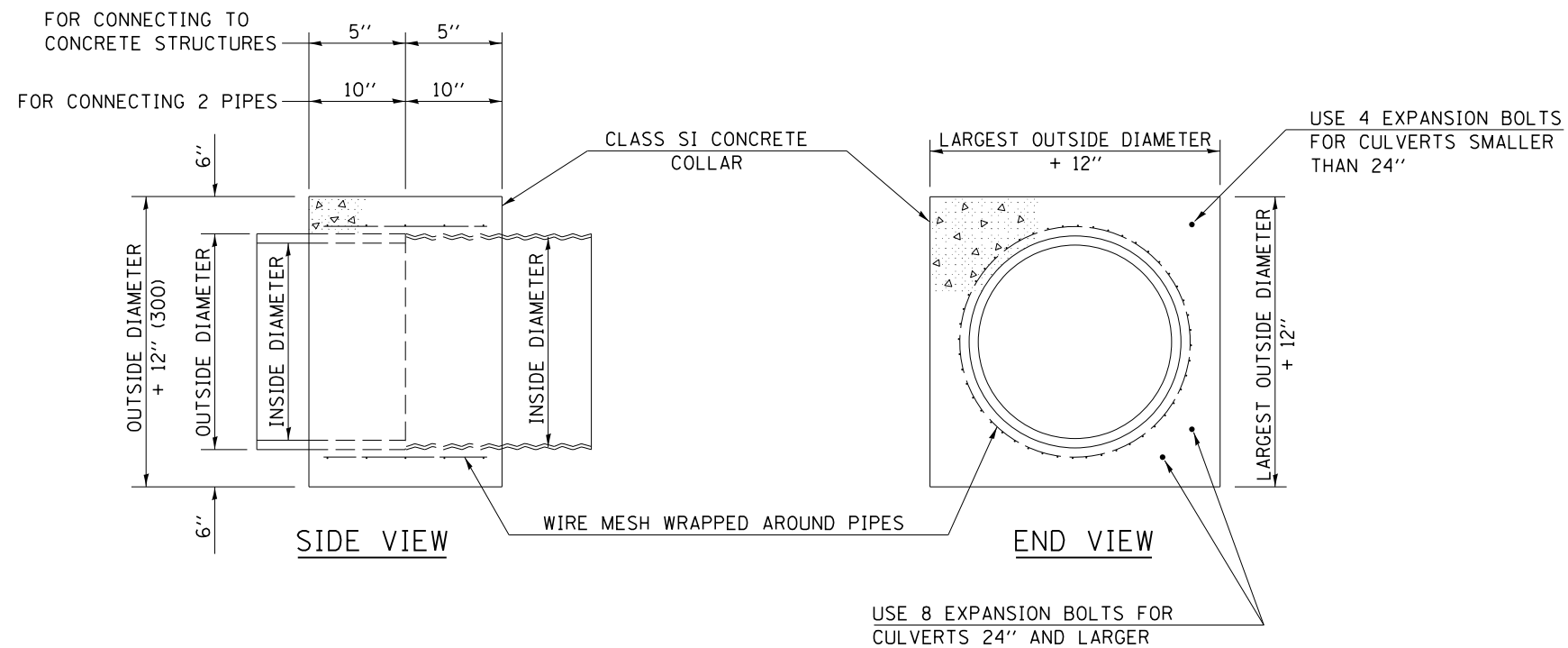
PR PIPE DRAINS 18"x30'  
USFL 28.0' RT STA 23+00.0 ELEV 655.0  
DSFL 28.0' RT STA 23+30.0 ELEV 654.0

PR PIPE DRAINS 18"x30'  
USFL 28.0' RT STA 24+04.0 ELEV 654.0  
DSFL 28.0' RT STA 23+66.0 ELEV 653.0

PR PIPE CULVERTS, CLASS D, TYPE 1 18"x46'  
USFL 21.0' RT STA 24+98.0 ELEV 657.44  
DSFL 26.4' RT STA 24+52.3 ELEV 655.83

EXPLORATION TRENCH, 52" DEPTH  
(SEE SCHEDULE FOR LOCATIONS)





**GENERAL NOTES**

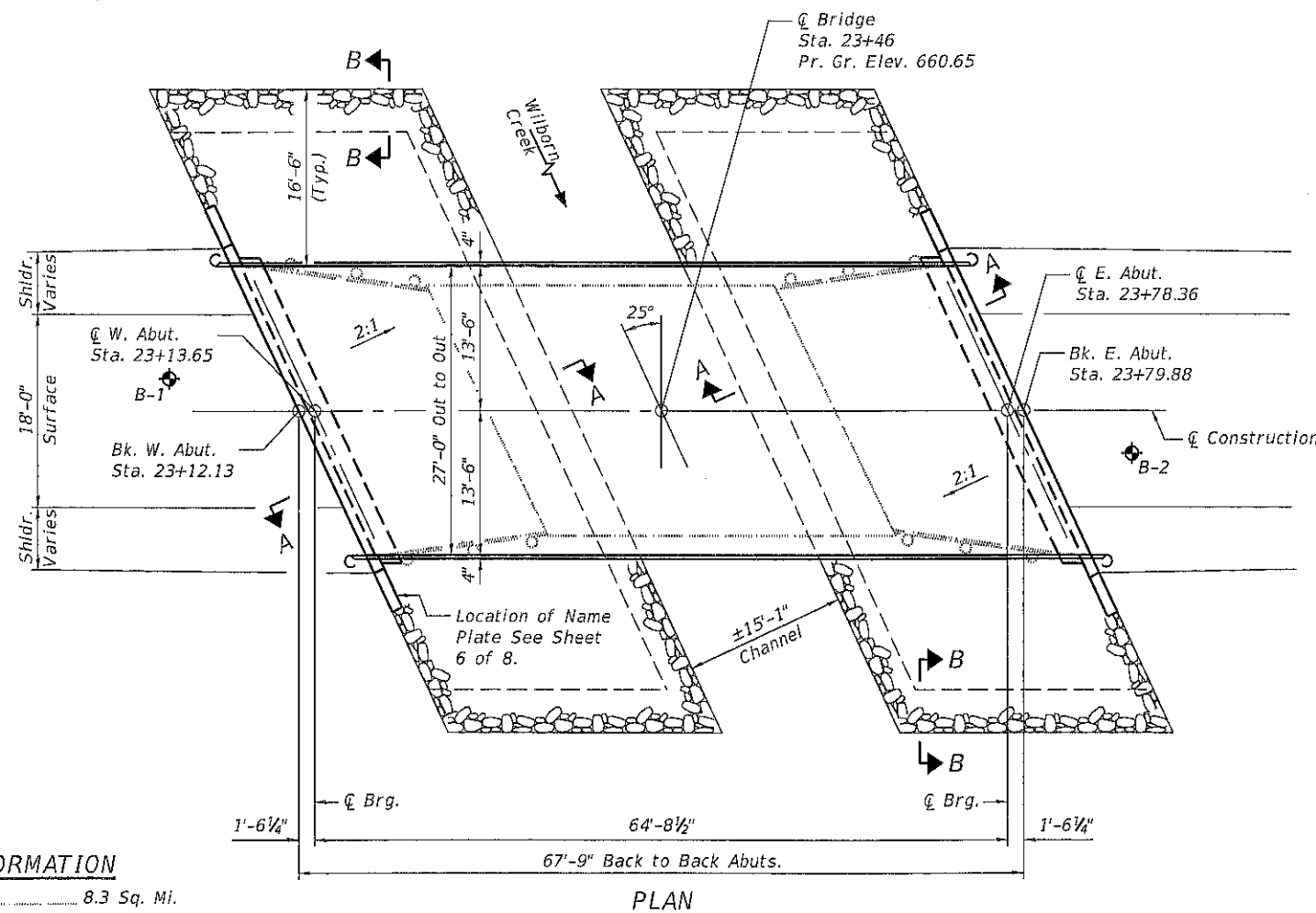
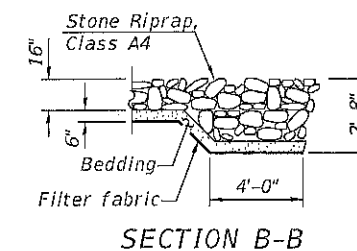
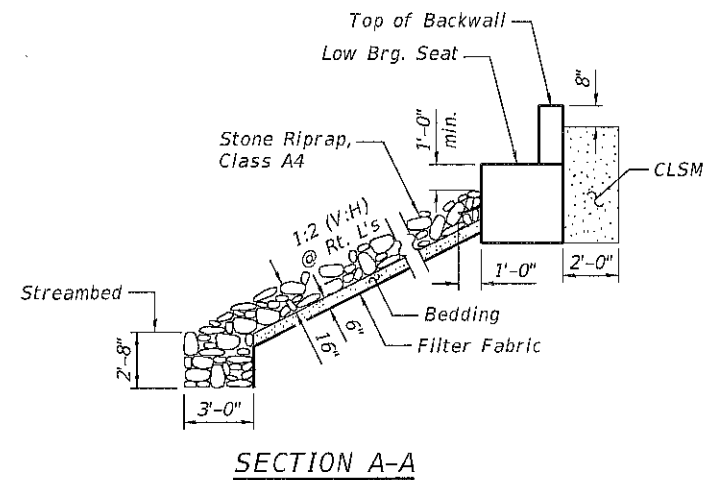
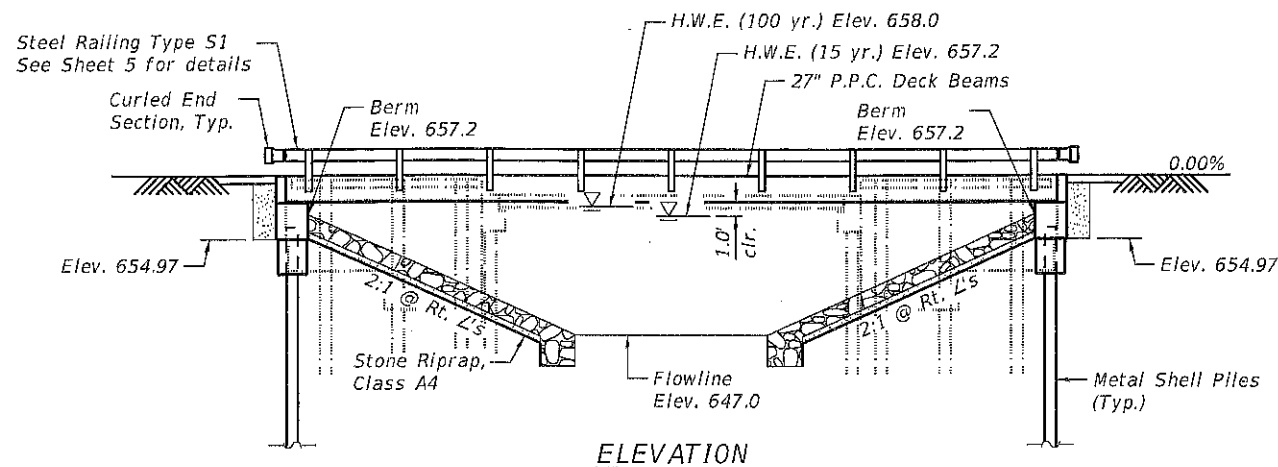
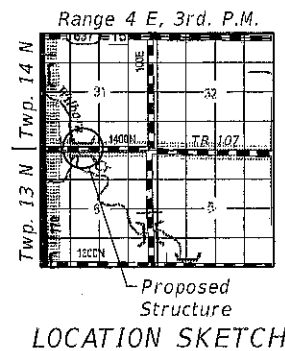
1. CLASS SI CONCRETE SHALL BE USED THROUGHOUT.
2. WHEN CONCRETE COLLARS ARE USED TO CONNECT PIPES OF DIFFERENT OUTSIDE DIAMETERS, THE CONCRETE COLLAR SHALL BE FORMED USING THE LARGEST OUTSIDE DIAMETER (SEE END VIEW).
3. THE WIRE MESH SHALL WEIGH NOT LESS THAN 54#/100 SQ. FT.
4. WHEN CONCRETE COLLARS ARE CONSTRUCTED ADJACENT TO AN EXISTING CONCRETE STRUCTURE (HEADWALLS, ETC.) EXPANSION BOLTS, SHALL BE USED AND WILL BE PAID FOR AT THE CONTRACT UNIT PRICE, EACH, FOR EXPANSION BOLTS OF THE SIZE SPECIFIED IN THE PLANS.
5. CONCRETE COLLARS WILL BE PAID FOR AT THE CONTRACT UNIT PRICE, PER CUBIC YARD, FOR CONCRETE COLLARS INCLUDING ALL MATERIAL AND LABOR SPECIFIED TO COMPLETE THE WORK IN PLACE.

QUANTITIES FOR CONCRETE PIPES	
INSIDE DIAMETER OF PIPE	ESTIMATED CLASS SI CONCRETE REQUIRED 20" WIDTH CU. YD.
INCH	CU. YD.
4"	0.14
6"	0.16
8"	0.19
10"	0.22
12"	0.25
15"	0.30
18"	0.35
24"	0.45
30"	0.57
36"	0.69
42"	0.83
48"	0.97
54"	1.12
60"	1.28

QUANTITIES FOR METAL PIPES	
INSIDE DIAMETER OF PIPE	ESTIMATED CLASS SI CONCRETE REQUIRED 20" WIDTH CU. YD.
INCH	CU. YD.
4"	0.12
6"	0.14
8"	0.16
10"	0.19
12"	0.21
15"	0.25
18"	0.29
24"	0.38
30"	0.47
36"	0.59
42"	0.69
48"	0.81
54"	0.93
60"	1.05

Benchmark: #2 Chiseled Square on North Hubguard existing structure, 8' Lt. Sta. 23+56 Elev. 659.38

Existing Structure: S.N. 070-4603 was originally built in 1956, is a single span concrete slab with integral concrete abutments supported by timber piles and timber wingwalls. The existing structure is 32'-6" back-back abutments, 23'-2" out-out deck with a 20' fc-fc curb clear roadway width. The existing structure is skewed 26°.



WILBORN CREEK  
BUILT 2021 BY  
MARROWBONE ROAD DISTRICT  
MOULTRIE COUNTY  
SEC. 04-06129-00-BR  
STATION 23+46  
STR. NO. 070-4635 LOADING HL-93  
**NAME PLATE**  
See Std. 515001

**GENERAL NOTES**  
Reinforcement bars designated (E) shall be epoxy coated.  
Layout of the slope protection system may be varied in the field to suit ground conditions as directed by the Engineer.

**DESIGN SPECIFICATIONS**  
2020 AASHTO LRFD Bridge Design Specifications, 9th Edition

**LOADING HL-93**  
(NEW CONSTRUCTION)  
Allow 50#/sq. ft. for future wearing surface.

**DESIGN STRESSES**  
**FIELD & EXISTING UNITS**  
f'c = 3,500 psi  
fy = 60,000 psi (Reinforcement)  
**PRECAST PRESTRESSED UNITS**  
f'c = 6,000 psi  
f'ci = 5,000 psi  
fpu = 270,000 psi (1/2" low relax strands)  
fpbi = 201,960 psi (1/2" low relax strands)  
fy = 60,000 psi (Reinforcement)

**TOTAL BILL OF MATERIAL**

ITEM	UNIT	SUPER	SUB	TOTAL
Filter Fabric	Sq. Yd.		380	380
Removal of Existing Structures	Each		1	1
Structure Excavation	Cu. Yd.		41	41
Concrete Structures	Cu. Yd.		28.4	28.4
Precast Prestressed Concrete Deck Beams (27" Depth)	Sq. Ft.	1782		1782
Reinforcement Bars, Epoxy Coated	Pound		3930	3930
Steel Railing, Type S1	Foot	132		132
Furnishing Metal Shell Piles 12"x0.250"	Foot		240	240
Driving Piles	Foot		240	240
Test Pile Metal Shells	Each		2	2
Name Plates	Each		1	1
Stone Riprap, Class A4	Ton		280	280
Controlled Low-Strength Material	Cu. Yd.		21.5	21.5

**WATERWAY INFORMATION**

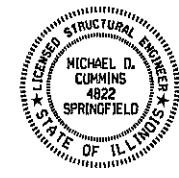
Drainage Area	8.3 Sq. Mi.
Required Opening (15 Yr.)	358 Sq. Ft.
Existing Opening (15 Yr.)	240 Sq. Ft.
Proposed Opening (15 Yr.)	358 Sq. Ft.
Required Opening (100 Yr.)	400 Sq. Ft.
Existing Opening (100 Yr.)	240 Sq. Ft.
Proposed Opening (100 Yr.)	400 Sq. Ft.
Design Discharge (15 Yr.)	1340 C.F.S.
Created Head (15 Yr.)	0.0 Ft.
100 Year Discharge	2180 C.F.S.
100 Yr. Created Head	0.4 Ft.

**DESIGN SCOUR ELEVATION TABLE**

Design Scour Elevation (ft.)	W. Abut.	E. Abut.	Item 113
655.0	655.0	655.0	8

"I certify that to the best of my knowledge, information and belief, this bridge design is structurally adequate for the design loading shown on the plans. The design is an economical one for the style of structure and complies with requirements of the current 'AASHTO Bridge Design Specifications'."

*Michael D. Cumins* 6-28-23  
ILLINOIS STRUCTURAL NO. 4822 (Expires 11/30/24)



**GENERAL PLAN**  
**TR 107 OVER WILBORN CREEK**  
**SECTION 04-06129-00-BR**  
**MOULTRIE COUNTY**  
**STA 23+46**  
**STRUCTURE NO. 070-4635**

MODEL: SMODELNAMES  
FILE NAME: SFILES



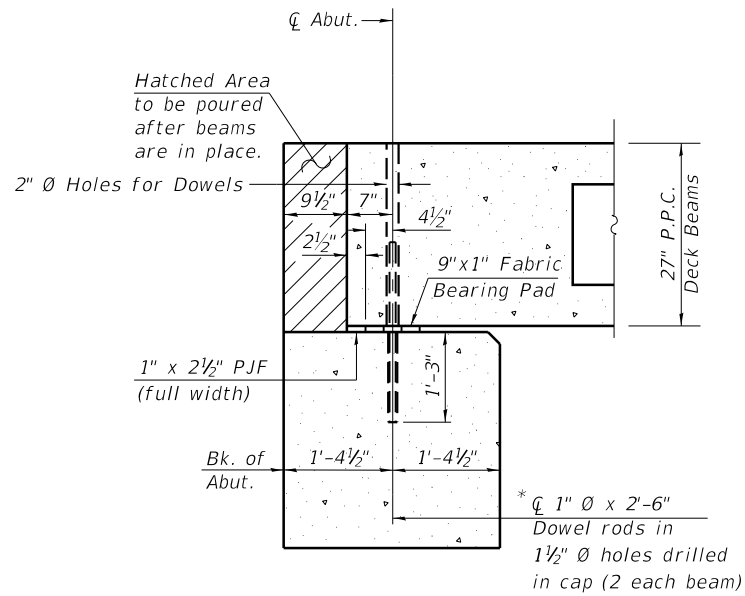
JOB #	2848	DESIGNED -	AAN	REVISED -	
FILE NAME	\$FILES\$	CHECKED -	MDC	REVISED -	
PLOT DATE	\$DATES\$	DRAWN -	SJS	REVISED -	
		CHECKED -	MDC	REVISED -	

**MOULTRIE COUNTY**  
**TR 107 IMPROVEMENTS**

**GENERAL PLAN AND ELEVATION**  
**STRUCTURE NO. 070-4635**

SHEET 1 OF 8 SHEETS

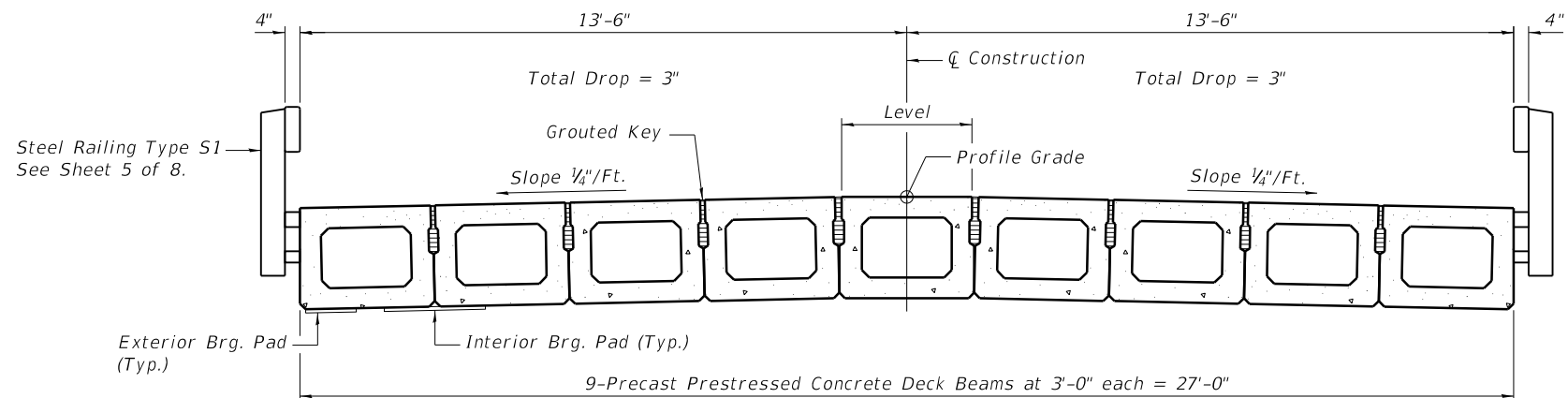
TR	SECTION	COUNTY	TOTAL SHEETS	SHEET NO.
107	04-06129-00-BR	MOULTRIE	21	10
			CONTRACT NO. 95942	
ILLINOIS FED. AID PROJECT				



**SECTION THRU ABUT.**

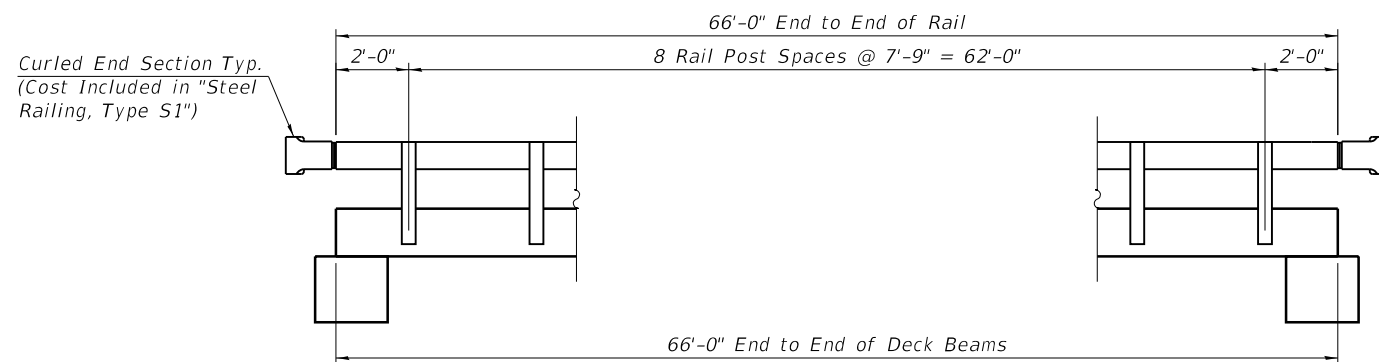
(@ Rt. L's to Abut.)

\* After beams have been erected, holes shall be drilled into substructure and anchor dowels placed. Dowel holes shall be filled with non-shrink grout to top of beam and allowed to cure min. 24 hrs. prior to grouting the shear keys.

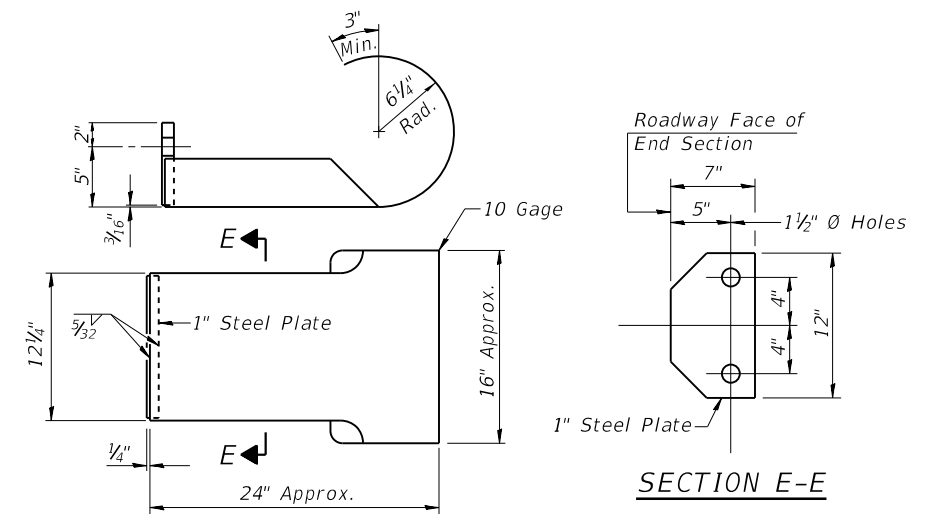


**CROSS SECTION**

Notes:  
See Sheet 3 & 4 of 8 for Deck Beams.  
See Sheet 5 of 8 for Steel Railing, Type S-1



**RAIL ELEVATION - STEEL RAILING, TYPE S-1**



**CURLED END SECTION DETAILS**

(4 Required)

MODEL: \$MODEL\$  
FILE NAME: \$FILES\$

**CEC** Cummins  
Engineering  
Corporation  
ENGINEERS & SURVEYORS

JOB = 2648	DESIGNED - AAN	REVISED -
FILE NAME = \$FILESS\$	CHECKED - MDC	REVISED -
PLOT DATE = \$DATES\$	DRAWN - SJS	REVISED -
	CHECKED - MDC	REVISED -

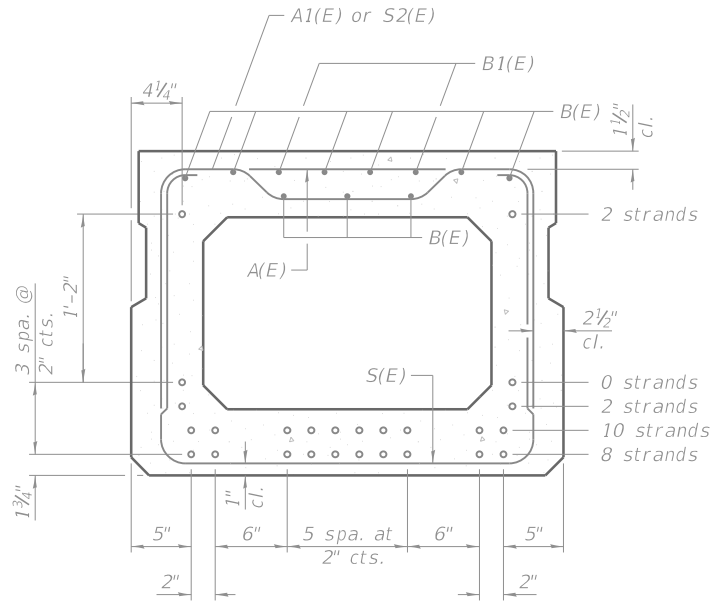
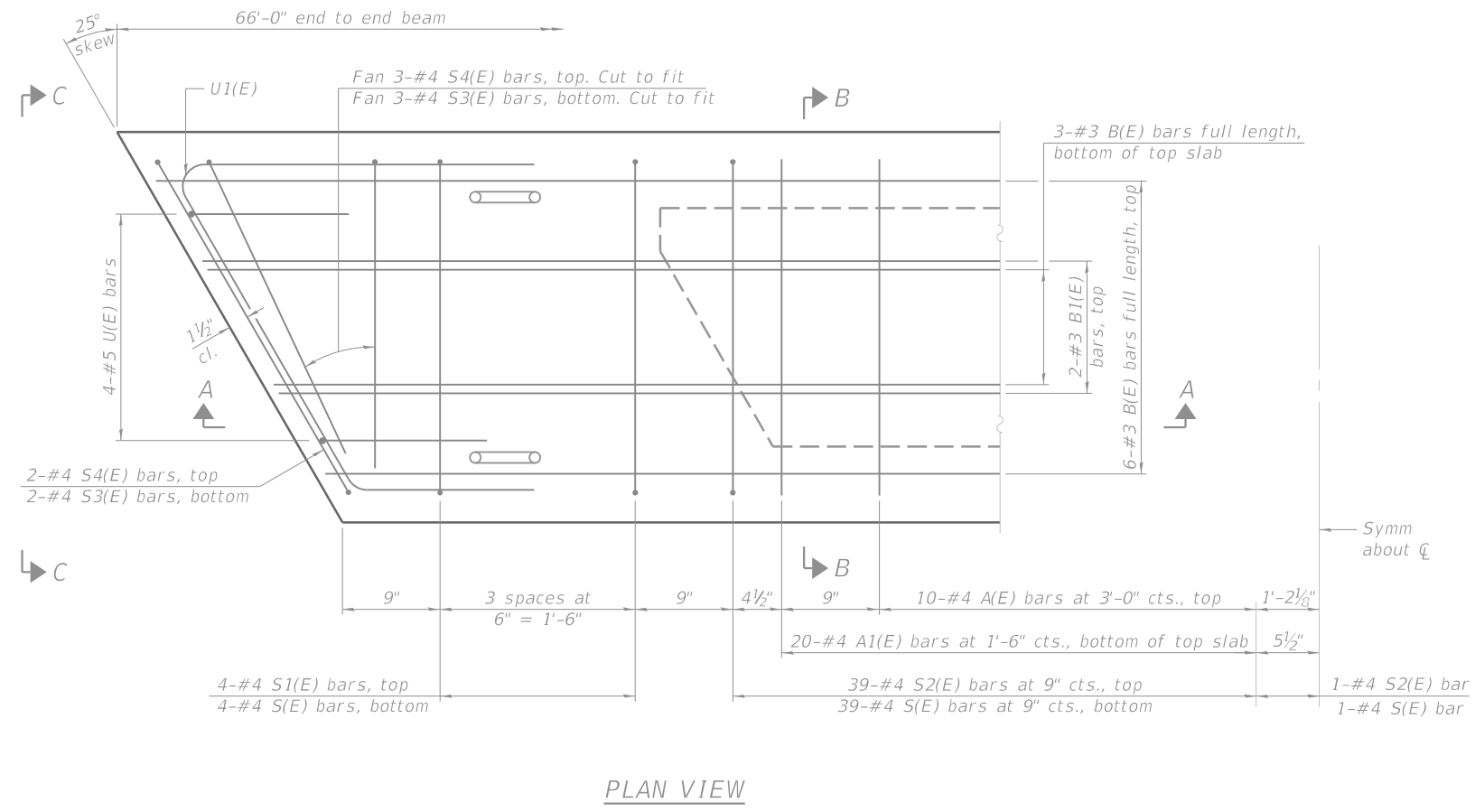
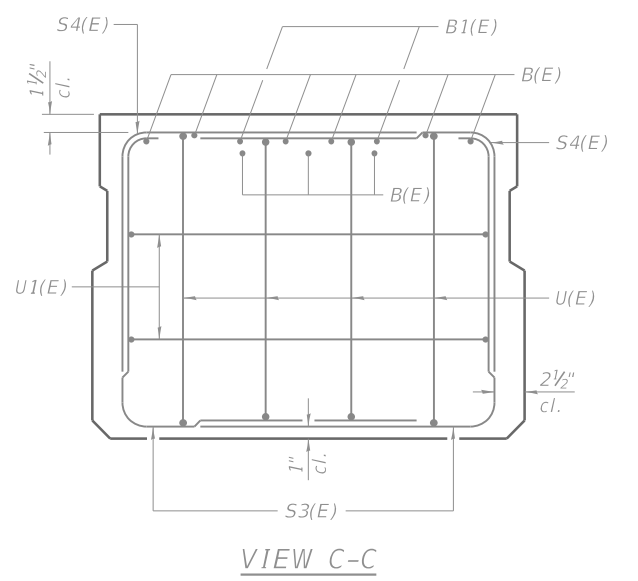
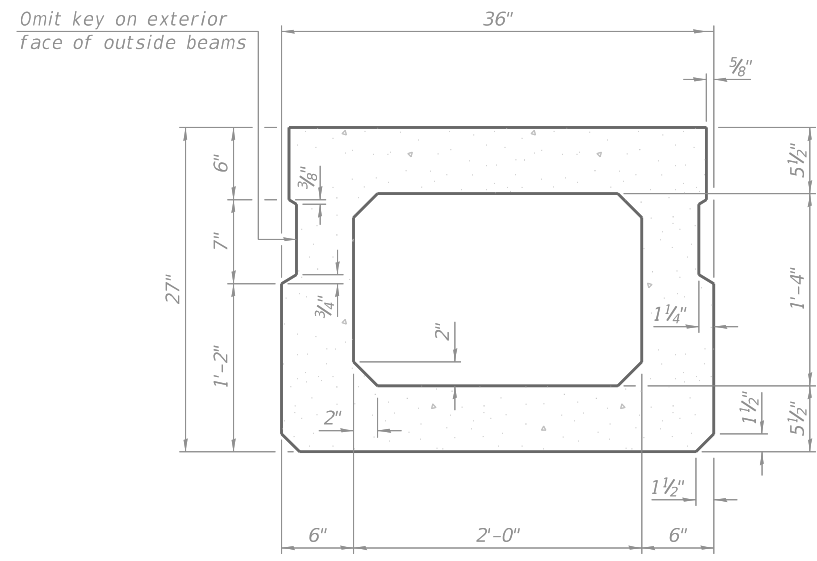
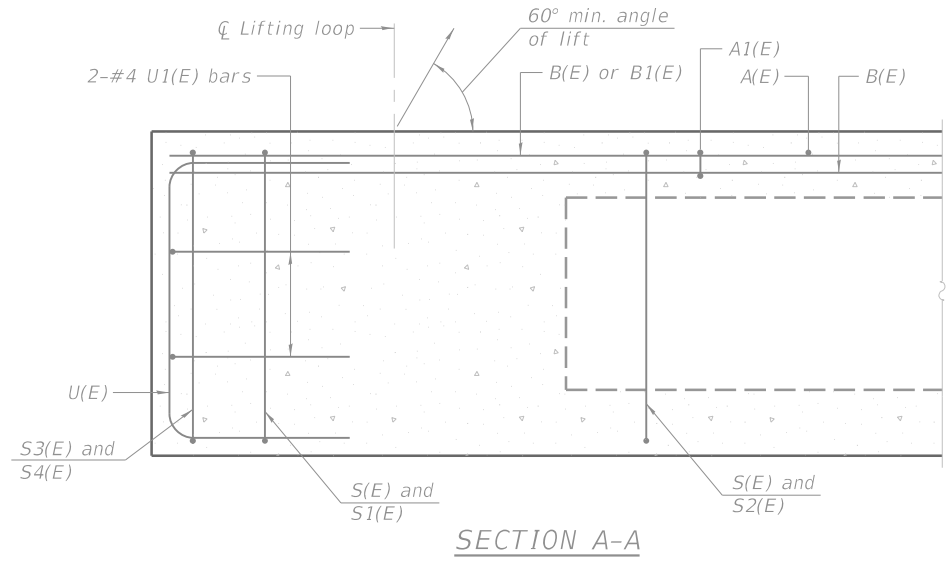
**MOULTRIE COUNTY  
TR 107 IMPROVEMENTS**

**SUPERSTRUCTURE DETAILS  
STRUCTURE NO. 070-4635**

SHEET 2 OF 8 SHEETS

TR	SECTION	COUNTY	TOTAL SHEETS	SHEET NO.
107	04-06129-00-BR	MOULTRIE	21	11
CONTRACT NO. 95942				

ILLINOIS FED. AID PROJECT



**BAR LIST**  
**ONE BEAM ONLY**  
(For information only)

Bar	No.	Size	Length	Shape
A(E)	20	#4	2'-7"	—
A1(E)	40	#4	2'-10"	—
B(E)	9	#3	65'-8"	—
B1(E)	4	#3	10'-0"	—
S(E)	87	#4	7'-5"	U
S1(E)	8	#4	5'-11"	U
S2(E)	79	#4	6'-2"	U
S3(E)	10	#4	5'-0"	U
S4(E)	10	#4	4'-3"	U
U(E)	8	#5	4'-6"	U
U1(E)	4	#4	6'-5"	U

Note:  
See sheet 4 of 8 for additional details and Bill of Material.

**SECTION B-B**  
(Showing reinforcement and permissible strand locations)  
Note:  
Place the number of strands specified in each row symmetrically about the centerline of beam in the permissible strand locations shown.

**MINIMUM BAR LAP**  
#3 bar = 1'-6"

Note:  
Spacing of S(E) and S2(E) bars may be adjusted up to 4" in the immediate area of the transverse tie diaphragms to miss the block outs for the transverse ties.

MODEL: \$MODELNAME\$  
FILE NAME: \$FILES\$

PD-2736-R

1-1-2020

**CEC** Cummins  
Engineering  
Corporation  
ENGINEERS & SURVEYORS

JOB = 2648  
FILE NAME = \$FILES\$  
PLOT DATE = \$DATES\$

DESIGNED - AAN	REVISED -
CHECKED - MDC	REVISED -
DRAWN - SJS	REVISED -
CHECKED - MDC	REVISED -

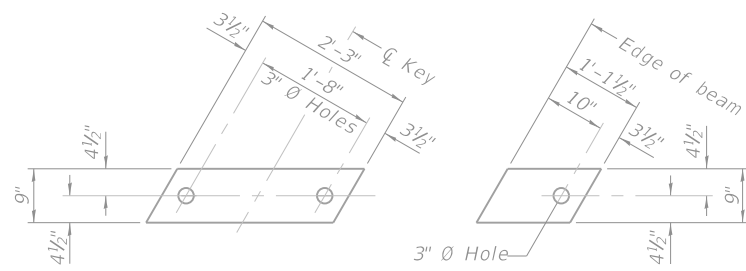
**MOULTRIE COUNTY**  
**TR 107 IMPROVEMENTS**

**27" x 36" PPC DECK BEAM**  
**STRUCTURE NO. 070-4635**

SHEET 3 OF 8 SHEETS

TR	SECTION	COUNTY	TOTAL SHEETS	SHEET NO.
107	04-06129-00-BR	MOULTRIE	21	12
CONTRACT NO. 95942				

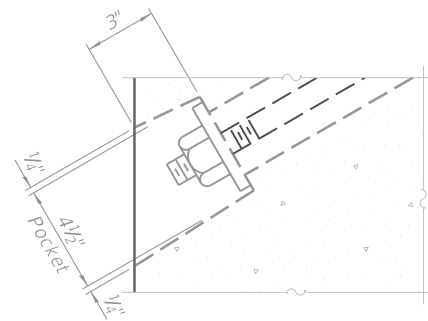
ILLINOIS FED. AID PROJECT



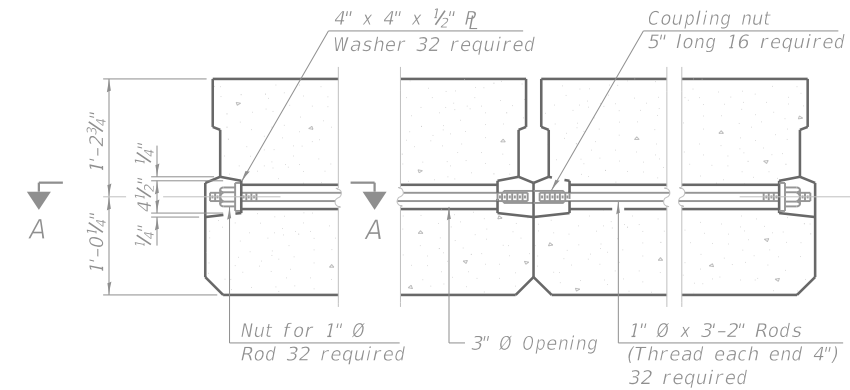
**FABRIC BEARING PAD**  
(Interior)      **FABRIC BEARING PAD**  
(Exterior)

**FIXED**

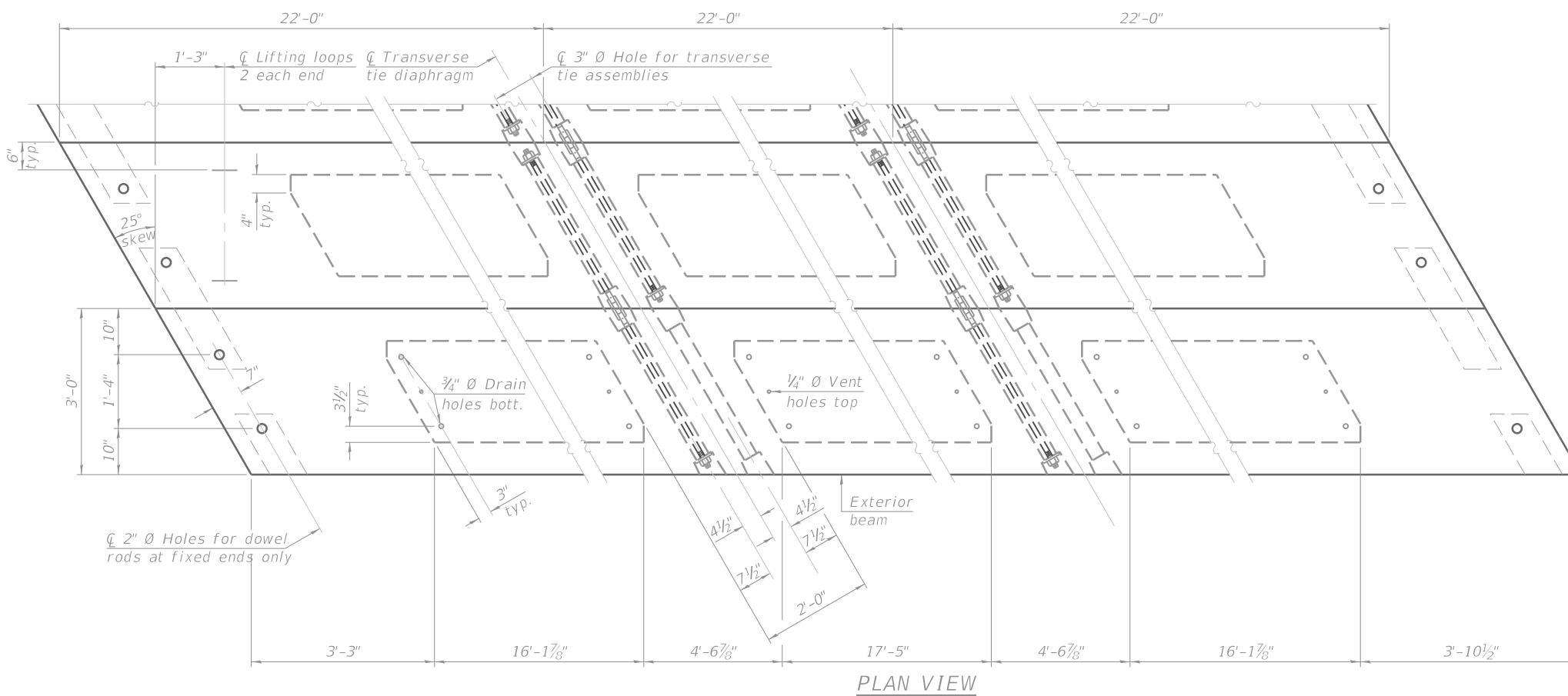
Notes:  
All bearing pads shall be 1" thick.  
Omit holes when using expansion bearings.  
Expansion bearing pads shall be bonded to the substructure.



**SECTION A-A**



**TYPICAL TRANSVERSE TIE ASSEMBLY**

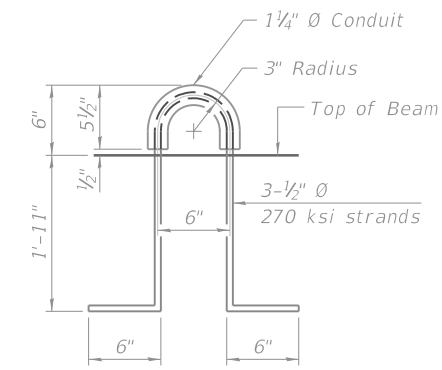
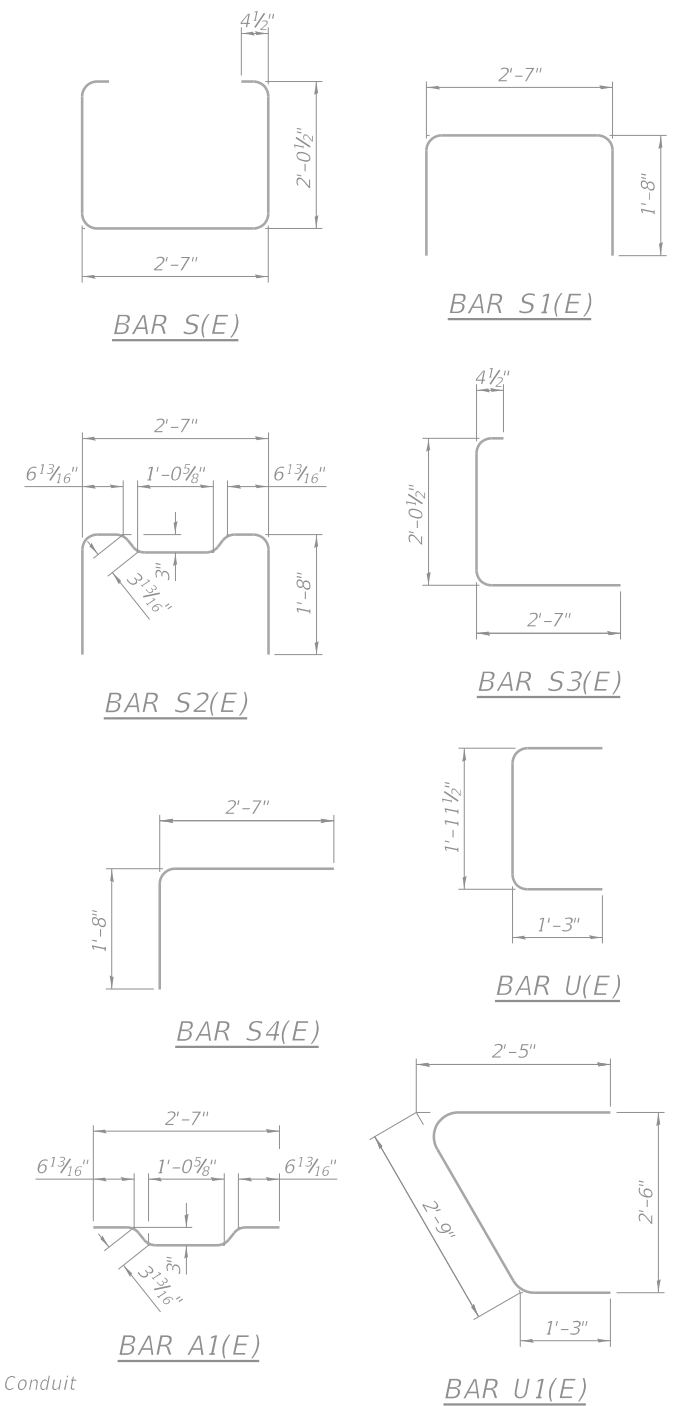


**PLAN VIEW**

**NOTES**

Prestressing steel shall be uncoated high strength, low relaxation 7-wire strand, Grade 270. The nominal diameter shall be 1/2" and the nominal cross-sectional area shall be 0.153 sq. in. The 1" rods in the transverse tie assembly shall be tightened to a snug fit and the threads set. Pockets on exterior faces of bridge shall be filled with grout after transverse tie assembly is in place. Two 1/8" fabric adjusting shims of the dimensions of the exterior bearing pad shall be provided for each bearing pad location. A minimum 2 1/2" lifting pin shall be used to engage the lifting loops during handling. Corrosion Inhibitor, per Article 1020.05(b)(10) and 1021.07 of the Standard Specifications, shall be used in the concrete for precast prestressed concrete deck beams. Compressive strength of prestressed concrete, f'c, shall be 6000 psi. Compressive strength of prestressed concrete at release, f'ci, shall be 5000 psi.

Note:  
Connect beams in pairs with the transverse tie configuration shown.



**LIFTING LOOP DETAIL**

**BILL OF MATERIAL**

Precast Prestressed Conc. Deck Bms. (27" depth)	Sq. Ft.	1782
---	---------	------

MODEL: \$MODELNAME\$  
FILE NAME: \$FILES\$

PDD-2736-R      1-1-2020

**CEC** Cummins  
Engineering  
Corporation  
ENGINEERS & SURVEYORS

JOB =	2648
FILE NAME =	\$FILES\$
PLOT DATE =	\$DATES\$

DESIGNED -	AAN
CHECKED -	MDC
DRAWN -	SJS
CHECKED -	MDC

REVISED -	
REVISED -	
REVISED -	
REVISED -	

**MOULTRIE COUNTY  
TR 107 IMPROVEMENTS**

**27" x 36" PPC DECK BEAM DETAILS  
STRUCTURE NO. 070-4635**

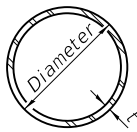
SHEET 4 OF 8 SHEETS

TR	SECTION	COUNTY	TOTAL SHEETS	SHEET NO.
107	04-06129-00-BR	MOULTRIE	21	13
CONTRACT NO. 95942				

ILLINOIS FED. AID PROJECT

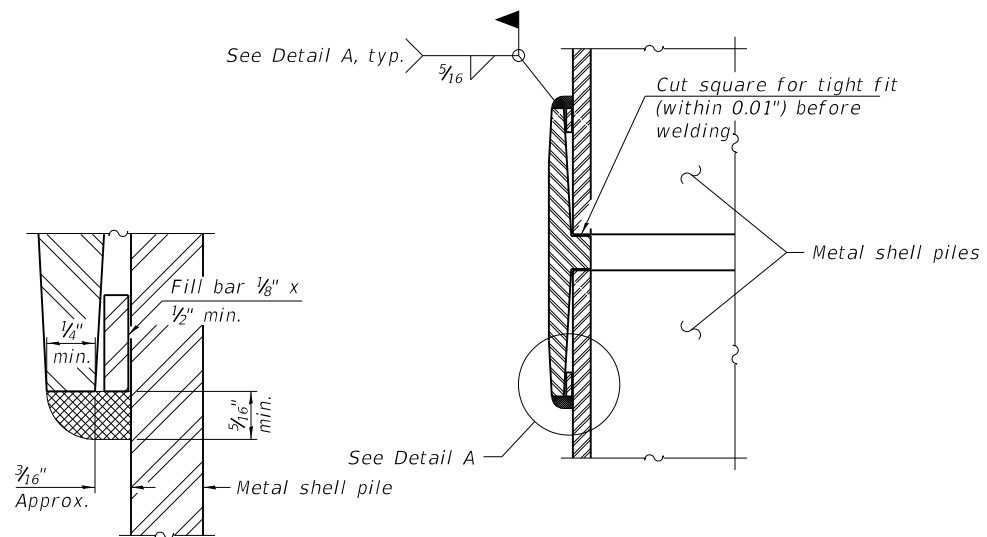




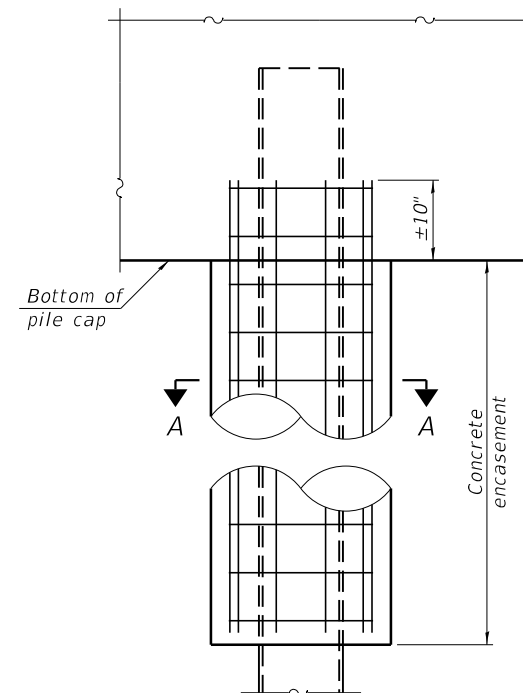


**METAL SHELL PILE TABLE**

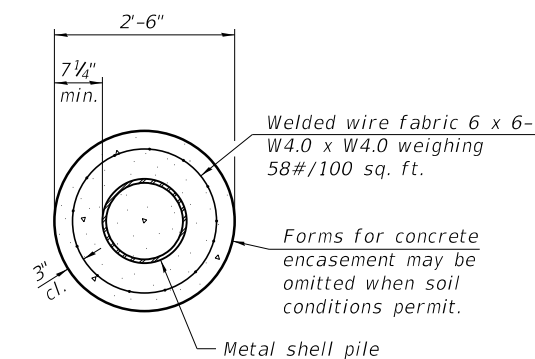
Designation and outside diameter	Wall thickness t	Weight per foot (Lbs./ft.)	Inside volume (yd. <sup>3</sup> /ft.)
PP12	0.250"	31.37	0.0267
PP14	0.250"	36.71	0.0368
PP14	0.312"	45.61	0.0361
PP16	0.312"	52.32	0.0478
PP16	0.375"	62.64	0.0470



**DETAIL A**

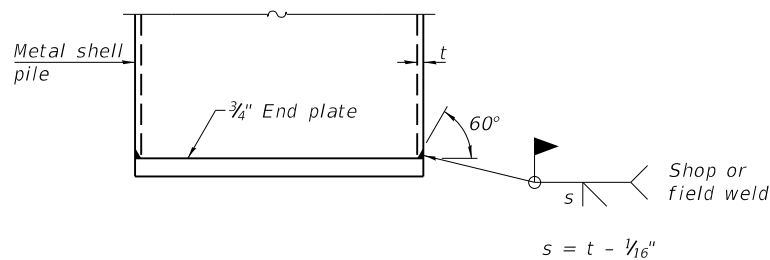


**ELEVATION**



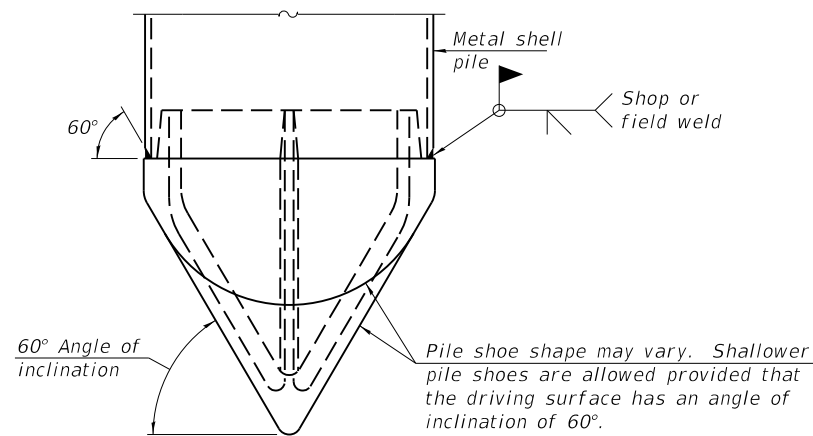
**SECTION A-A**

**INDIVIDUAL PILE CONCRETE ENCASEMENT**  
(When specified)



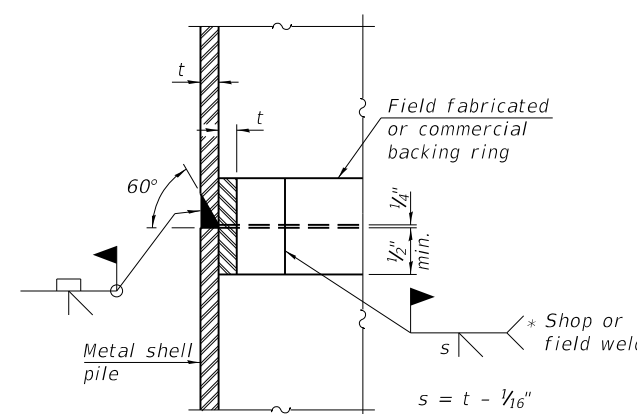
**END PLATE ATTACHMENT**

**WELDED COMMERCIAL SPLICE**  
Notes:  
The 1/8" x 1/2" min. fill bar may be constructed of 2 bars with a 1/8" max. gap between them.  
Pile segments shall be driven to solid contact with splicer before welding.



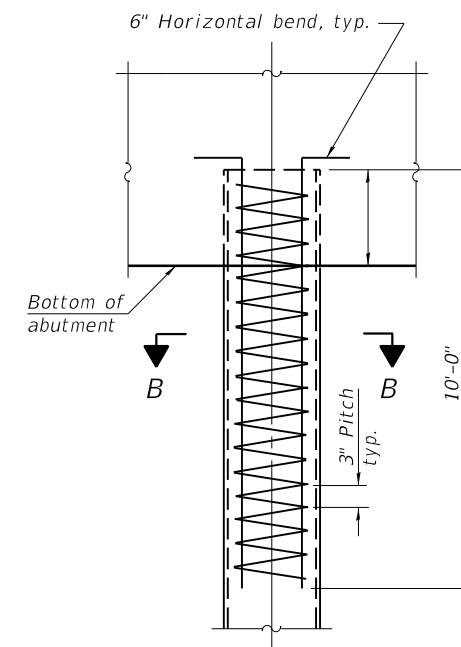
**PILE SHOE ATTACHMENT**

(When called for on the plans, the Contractor shall furnish metal shell pile shoes consisting of a single piece conical pile point as shown. The pile shoes shall be cast in one piece steel according to either ASTM A 148 Grade 80-50 or AASHTO M 103 Grade 65-35 and shall provide full bearing over the full circumference of the metal shell pile. The pile shoe shall have tapered leads to assure proper alignment and fitting and shall be secured to the pile with a circumferential weld).



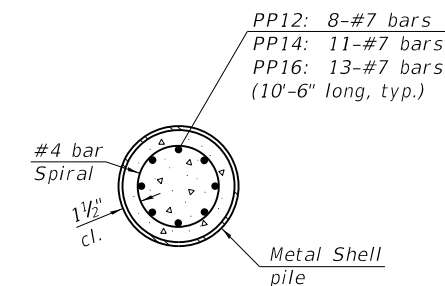
**COMPLETE PENETRATION WELD SPLICE**

\* Field fabricated backing ring may be made from pile shell by removing segment to allow reducing circumference and vertically rejoin with partial joint penetration weld.



**ELEVATION**

**REINFORCEMENT AT ABUTMENTS**  
(Omit when concrete encasement is specified)



**SECTION B-B**

Note:  
The metal shell piles shall be according to Article 1006.05 of the Standard Specifications.

MODEL: \$MODEL\$  
FILE NAME: \$FILES\$

F-MS 1-1-2020



JOB = 2648	DESIGNED - AAN	REVISED -
FILE NAME = \$FILES\$	CHECKED - MDC	REVISED -
PLOT DATE = \$DATE\$	DRAWN - SJS	REVISED -
	CHECKED - MDC	REVISED -

**MOULTRIE COUNTY  
TR 107 IMPROVEMENTS**

**METAL SHELL PILE DETAILS  
STRUCTURE NO. 070-4635**

SHEET 7 OF 8 SHEETS

TR	SECTION	COUNTY	TOTAL SHEETS	SHEET NO.
107	04-06129-00-BR	MOULTRIE	21	16
CONTRACT NO. 95942				

ILLINOIS FED. AID PROJECT



BRIDGE FOUNDATION SOIL BORING LOG

EL by TSH 10/6/20

MET Midwest Engineering and Testing, Inc.

Route: County Road 1400 North (TR107)  
 Section: 04-06129-00-BR  
 County: Moultrie  
 Structure No. 070-4635 (070-4603)  
 Station: 23+00  
 Offset: 3' Lt  
 BRIDGE EL 100.0 = 1658.9

Boring: B-1  
 Page: Page 1 of 1  
 Date of Boring: August 28, 2020  
 Drilled By: Zach Wilcoxon  
 Checked By: Nicholas D. Wendling, P.E.  
 MET Project No: 203089

Surface Water Elevation: 83.8 Ground Water Elevation: when drilling: Dry at completion: Dry	D E P T H (ft.)	B L O W S (6")	Q <sub>u</sub> (tsf)	MC (%)		D E P T H (ft.)	B L O W S (6")	Q <sub>u</sub> (tsf)	MC (%)
Ground Surface Elevation: 100.0 658.8									
8" Oil and Chip				5	Gray silty CLAY (CL) with sand and small gravel - Till				
						4	5	2.8B	19
						5	6		
						6			
						4	5	4.3P	14
						5	4		
						4	5	4.8B	13
						5	6		
						3	3	4.0P	20
						3	4		
						3	3	2.8B	15
						3	4		
						4	6	3.0B	21
						6	7		
						2	2	0.6B	27
						2	3		
						3	3	5.6B	12
						3	4		
						5	7	4.5P	10
						7	10		
						3	5	5.4B	12
						5	7		
						4	5	3.2B	18
						4	6		
						5	9	3.0B	14
						9	12		
						6	7	2.6B	12
						7			
						4	5	2.8B	14
						5	7		
						6	9	3.6B	17
						8			
						9			

N - Standard Penetration Test (SPT) = Sum of last two blow values in sample  
 MC- Moisture Content - Percent of dry weight  
 Qu- Unconfined Compressive Strength- tons per square foot (tsf)  
 Type Failure  
 Qu test  
 B-Bulge  
 S-Shear  
 P-Penetrometer

BRIDGE FOUNDATION SOIL BORING LOG

EL by TSH 10/6/20

MET Midwest Engineering and Testing, Inc.

Route: County Road 1400 North (TR107)  
 Section: 04-06129-00-BR  
 County: Moultrie  
 Structure No. 070-4635 (070-4603)  
 Station: 23+90  
 Offset: 4' Rt  
 BRIDGE EL 100.0 = 1658.9

Boring: B-2  
 Page: Page 1 of 1  
 Date of Boring: August 28, 2020  
 Drilled By: Zach Wilcoxon  
 Checked By: Nicholas D. Wendling, P.E.  
 MET Project No: 203089

Surface Water Elevation: 83.8 Ground Water Elevation: when drilling: Dry at completion: Dry	D E P T H (ft.)	B L O W S (6")	Q <sub>u</sub> (tsf)	MC (%)		D E P T H (ft.)	B L O W S (6")	Q <sub>u</sub> (tsf)	MC (%)
Ground Surface Elevation: 100.0 659.0									
8" Oil and Chip				15	Black silty CLAY (CL) with sand - Fill				
						4	5	2.4B	19
						5	6		
						4	6	4.3P	21
						6	6		
						4	5	2.8B	19
						5	6		
						3	4	4.4B	18
						5	5		
						2	2	1.2B	19
						2	2		
						2	2	5.2B	13
						3	3		
						3	4	5.6B	11
						5	5		
						3	5	5.7B	12
						5	5		
						3	4	6.0B	12
						5	5		
						6	7	2.2S	17
						8	8		
						3	5	2.8B	13
						5	7		
						7	7	2.8B	20
						8	8		

N - Standard Penetration Test (SPT) = Sum of last two blow values in sample  
 MC- Moisture Content - Percent of dry weight  
 Qu- Unconfined Compressive Strength- tons per square foot (tsf)  
 Type Failure  
 Qu test  
 B-Bulge  
 S-Shear  
 P-Penetrometer

MODEL: \$MODELNAMES  
 FILE NAME: \$FILES



JOB = 2648	DESIGNED - AAN	REVISED -
FILE NAME = \$FILES	CHECKED - MDC	REVISED -
PLOT DATE = \$DATE\$	DRAWN - SJS	REVISED -
	CHECKED - MDC	REVISED -

MOULTRIE COUNTY  
 TR 107 IMPROVEMENTS

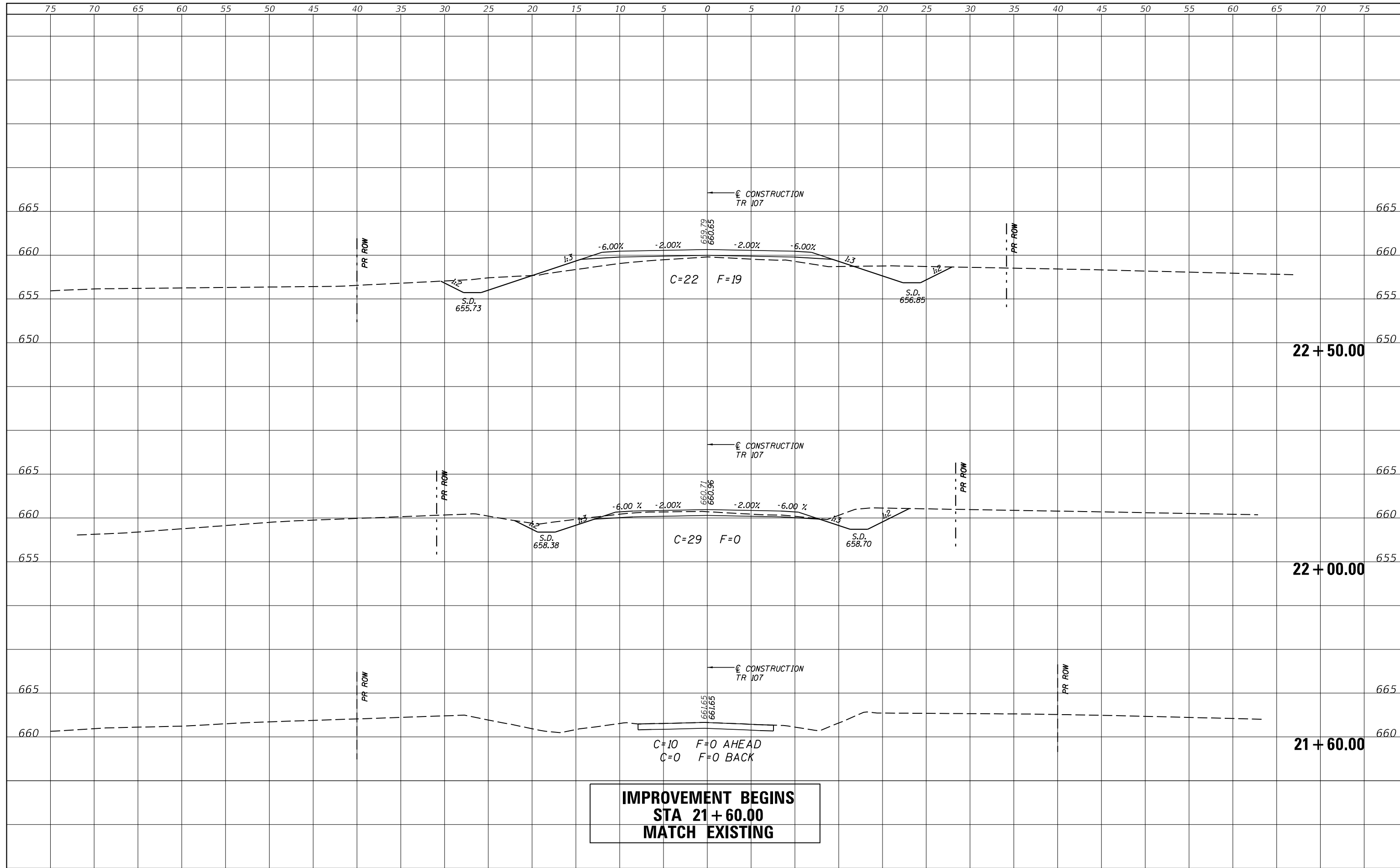
BORINGS  
 STRUCTURE NO. 070-4635

SHEET 8 OF 8 SHEETS

TR	SECTION	COUNTY	TOTAL SHEETS	SHEET NO.
107	04-06129-00-BR	MOULTRIE	21	17
CONTRACT NO. 95942				
ILLINOIS FED. AID PROJECT				

DATE	
BY	
SURVEYED	
PLOTTED	
TEMPLATE	
AREAS	
CHECKED	
FINAL SURVEY	
NOTE BOOK	
NO.	

DATE	
BY	
SURVEYED	
PLOTTED	
TEMPLATE	
AREAS	
CHECKED	
ORIGINAL SURVEY	
NOTE BOOK	
NO.	



**IMPROVEMENT BEGINS  
 STA 21+60.00  
 MATCH EXISTING**

MODEL: SPODELNAME\$  
 FILE NAME: SFILE\$

**CEC** Cummins  
 Engineering  
 Corporation  
 ENGINEERS & SURVEYORS

JOB= 2648  
 FILE NAME = SFILE\$  
 PLOT SCALE = SSCALE\$  
 PLOT DATE = SDATE\$

DESIGNED - CGF  
 DRAWN - CGF  
 CHECKED - AAN  
 DATE - 4/07/2022

REVISED -  
 REVISED -  
 REVISED -  
 REVISED -

**MOULTRIE COUNTY  
 TR 107 IMPROVEMENTS**

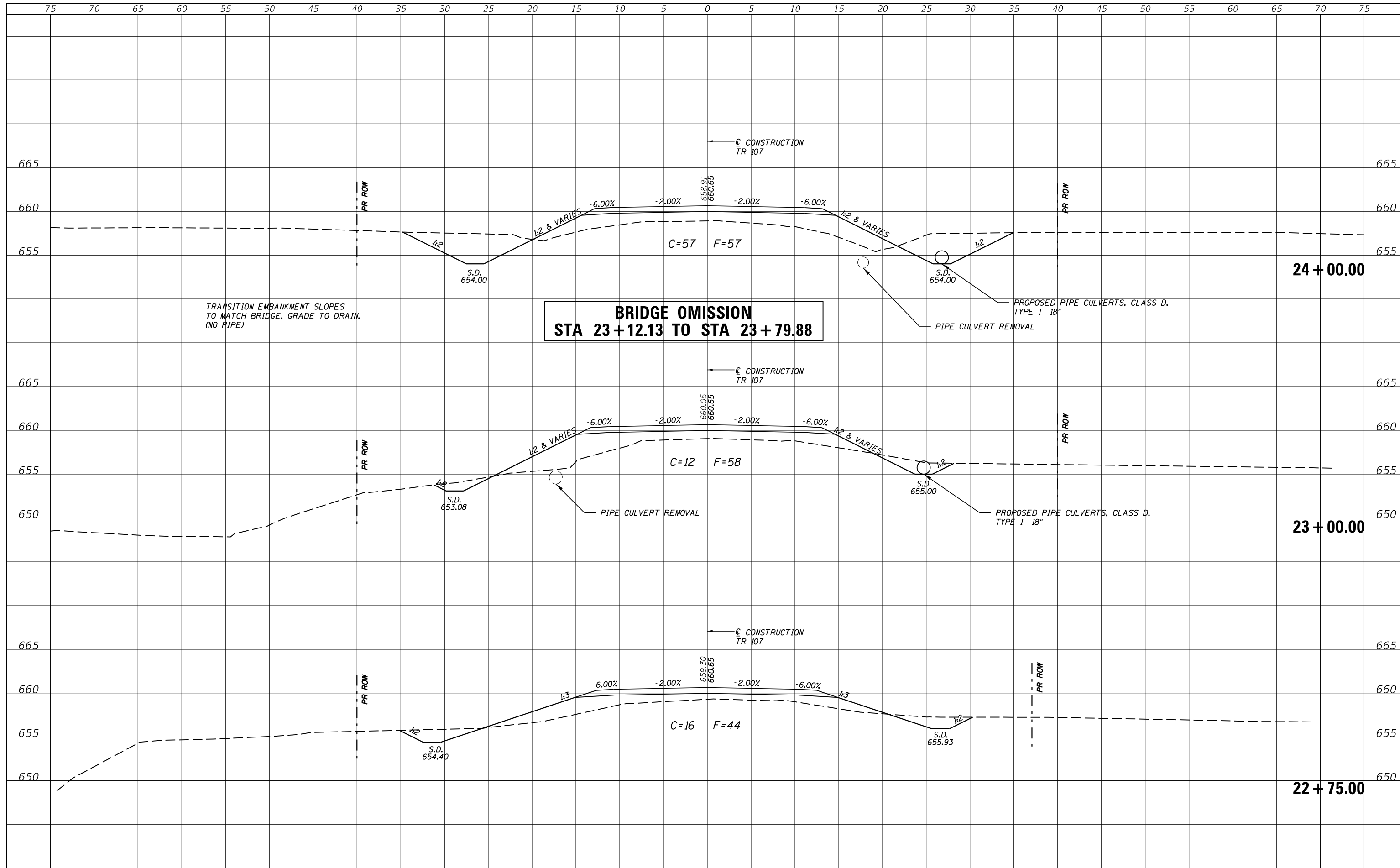
**CROSS SECTIONS**

SCALE: SHEET OF SHEETS STA. 21+60.00 TO STA. 22+50.00

T.R.	SECTION	COUNTY	TOTAL SHEETS	SHEET NO.
107	04-06129-00-BR	MOULTRIE	21	18
			CONTRACT NO. 95942	
		ILLINOIS FED. AID PROJECT		

DATE	
BY	
SURVEYED	
PLOTTED	
TEMPLATE	
AREAS	
CHECKED	
FINAL SURVEY	
NOTE BOOK	
NO.	

DATE	
BY	
SURVEYED	
PLOTTED	
TEMPLATE	
AREAS	
CHECKED	
ORIGINAL SURVEY	
NOTE BOOK	
NO.	



JOB=	2648
FILE NAME =	\$FILES\$
PLOT SCALE =	\$SCALES\$
PLOT DATE =	\$DATES\$
DESIGNED -	CGF
DRAWN -	CGF
CHECKED -	AAN
DATE -	4/07/2022
REVISED -	
REVISED -	
REVISED -	
REVISED -	

**MOULTRIE COUNTY  
TR 107 IMPROVEMENTS**

**CROSS SECTIONS**

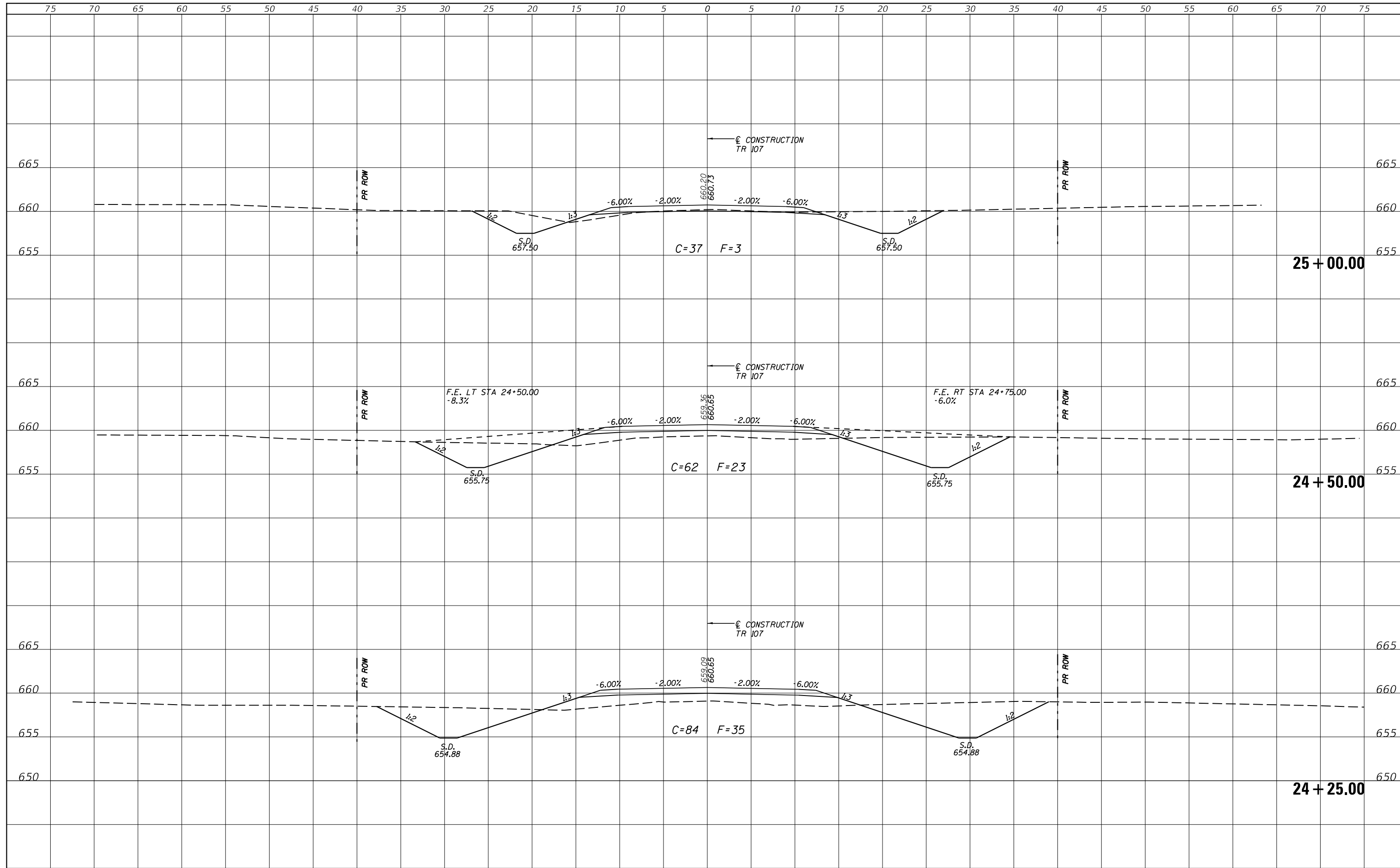
SCALE: SHEET OF SHEETS STA. 22+75.00 TO STA. 24+00.00

T.R.	SECTION	COUNTY	TOTAL SHEETS	SHEET NO.
107	04-06129-00-BR	MOULTRIE	21	19
			CONTRACT NO. 95942	

ILLINOIS FED. AID PROJECT

DATE	
BY	
SURVEYED	
PLOTTED	
TEMPLATE	
AREAS	
CHECKED	
FINAL SURVEY	
NOTE BOOK	
NO.	

DATE	
BY	
SURVEYED	
PLOTTED	
TEMPLATE	
AREAS	
CHECKED	
ORIGINAL SURVEY	
NOTE BOOK	
NO.	



MODEL: \$MODELNAME\$  
FILE NAME: \$FILES\$

**CEC** Cummins  
Engineering  
Corporation  
ENGINEERS & SURVEYORS

JOB=	2648
FILE NAME =	\$FILES\$
PLOT SCALE =	\$SCALES\$
PLOT DATE =	\$DATES\$

DESIGNED -	CGF	REVISED -	
DRAWN -	CGF	REVISED -	
CHECKED -	AAN	REVISED -	
DATE -	4/07/2022	REVISED -	

**MOULTRIE COUNTY  
TR 107 IMPROVEMENTS**

**CROSS SECTIONS**

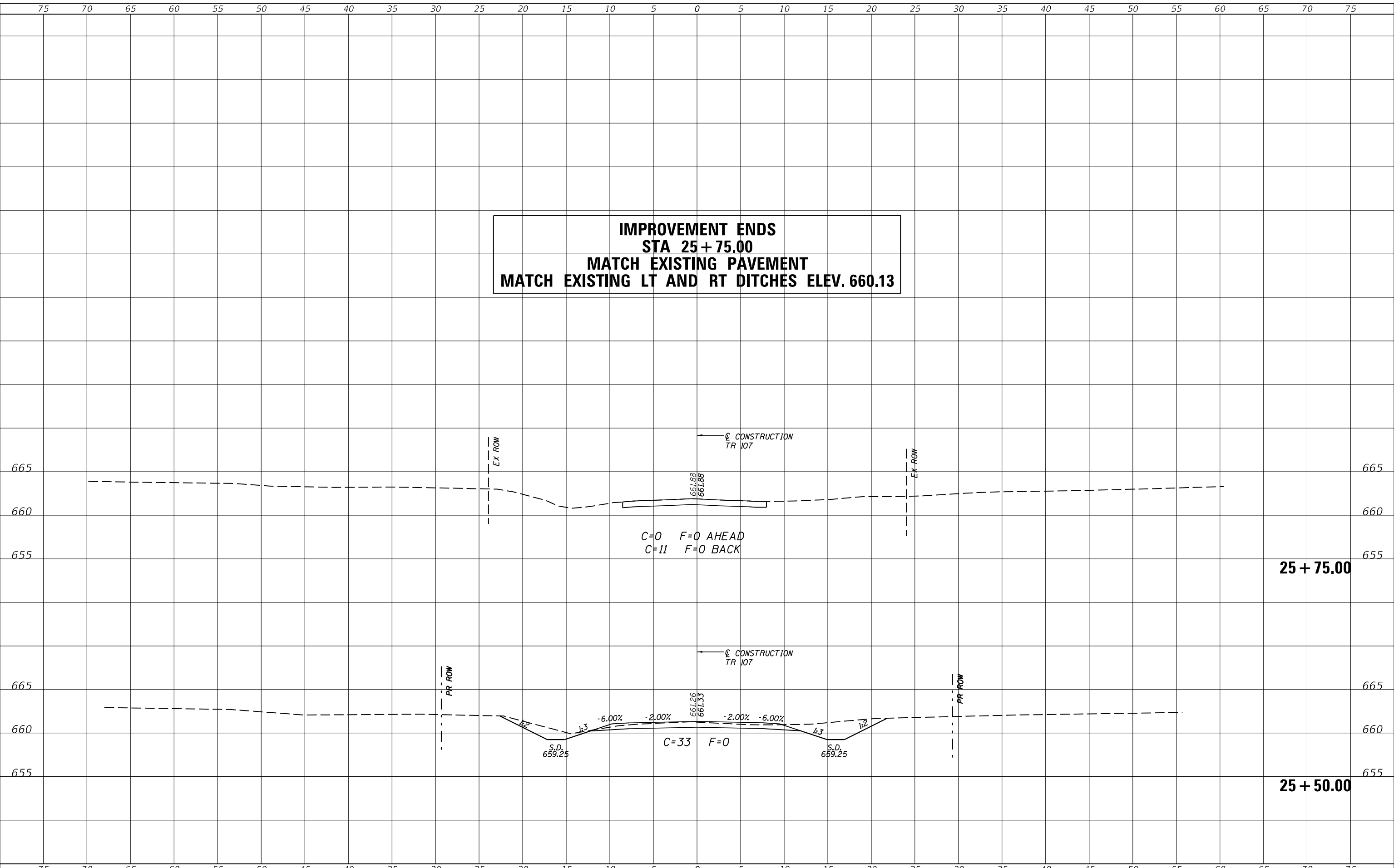
SCALE:	SHEET	OF	SHEETS	STA. 24+28.00	TO STA. 25+00.00
--------	-------	----	--------	---------------	------------------

T.R.	SECTION	COUNTY	TOTAL SHEETS	SHEET NO.
107	04-06129-00-BR	MOULTRIE	21	20
			CONTRACT NO. 95942	
			ILLINOIS FED. AID PROJECT	

FINAL SURVEY NO.	SURVEYED	DATE
NOTE BOOK	PLOTTED	
	TEMPLATE	
	AREAS	
	CHECKED	

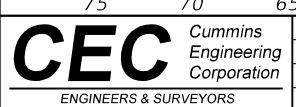
ORIGINAL SURVEY NO.	SURVEYED	DATE
NOTE BOOK	PLOTTED	
	TEMPLATE	
	AREAS	
	CHECKED	

**IMPROVEMENT ENDS  
STA 25+75.00  
MATCH EXISTING PAVEMENT  
MATCH EXISTING LT AND RT DITCHES ELEV. 660.13**



**25 + 75.00**

**25 + 50.00**



JOB= 2648	DESIGNED - CGF	REVISED -
FILE NAME = \$FILES\$	DRAWN - CGF	REVISED -
PLOT SCALE = \$SCALES\$	CHECKED - AAN	REVISED -
PLOT DATE = \$DATES\$	DATE - 4/07/2022	REVISED -

**MOULTRIE COUNTY  
TR 107 IMPROVEMENTS**

**CROSS SECTIONS**

SCALE: SHEET OF SHEETS STA. 25+50.00 TO STA. 26+17.00

T.R.	SECTION	COUNTY	TOTAL SHEETS	SHEET NO.
107	04-06129-00-BR	MOULTRIE	21	21
			CONTRACT NO. 95942	
			ILLINOIS FED. AID PROJECT	

MODEL: \$MODELNAME\$ FILE NAME: \$FILES\$